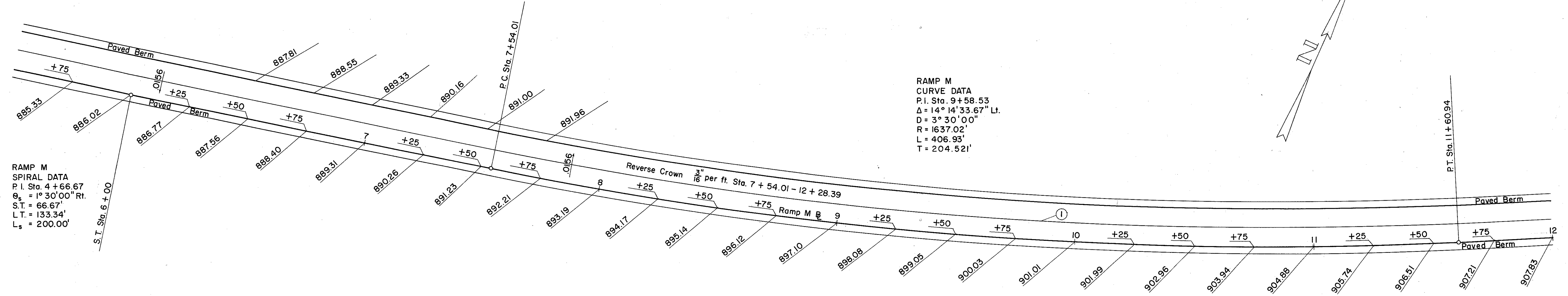


RAMP M
CURVE DATA
P.I. Sta. 2+00.18
 $\Delta = 6^{\circ}00'00''$ Rt.
D = $1^{\circ}30'00''$
R = 3819.72'
L = 400.00'
T = 200.18'

RAMP M
SPIRAL DATA
P.I. Sta. 4+66.67
 $\theta_s = 1^{\circ}30'00''$ Rt.
S.T. = 66.67'
L.T. = 133.34'
L_s = 200.00'

EXIT TERMINAL



RAMP M
SPIRAL DATA
P.I. Sta. 4+66.67
 $\theta_s = 1^{\circ}30'00''$ Rt.
S.T. = 66.67'
L.T. = 133.34'
L_s = 200.00'

RAMP M
CURVE DATA
P.I. Sta. 9+58.53
 $\Delta = 14^{\circ}14'33.67''$ Lt.
D = $3^{\circ}30'00''$
R = 1637.02'
L = 406.93'
T = 204.521'

CONSTRUCTION JOINT LEGEND
① Standard Longitudinal Joint.
② Standard Expansion Joint.

ROADSIDE REST
RAMP M DETAIL
SCALE: 1" = 20'-0"