

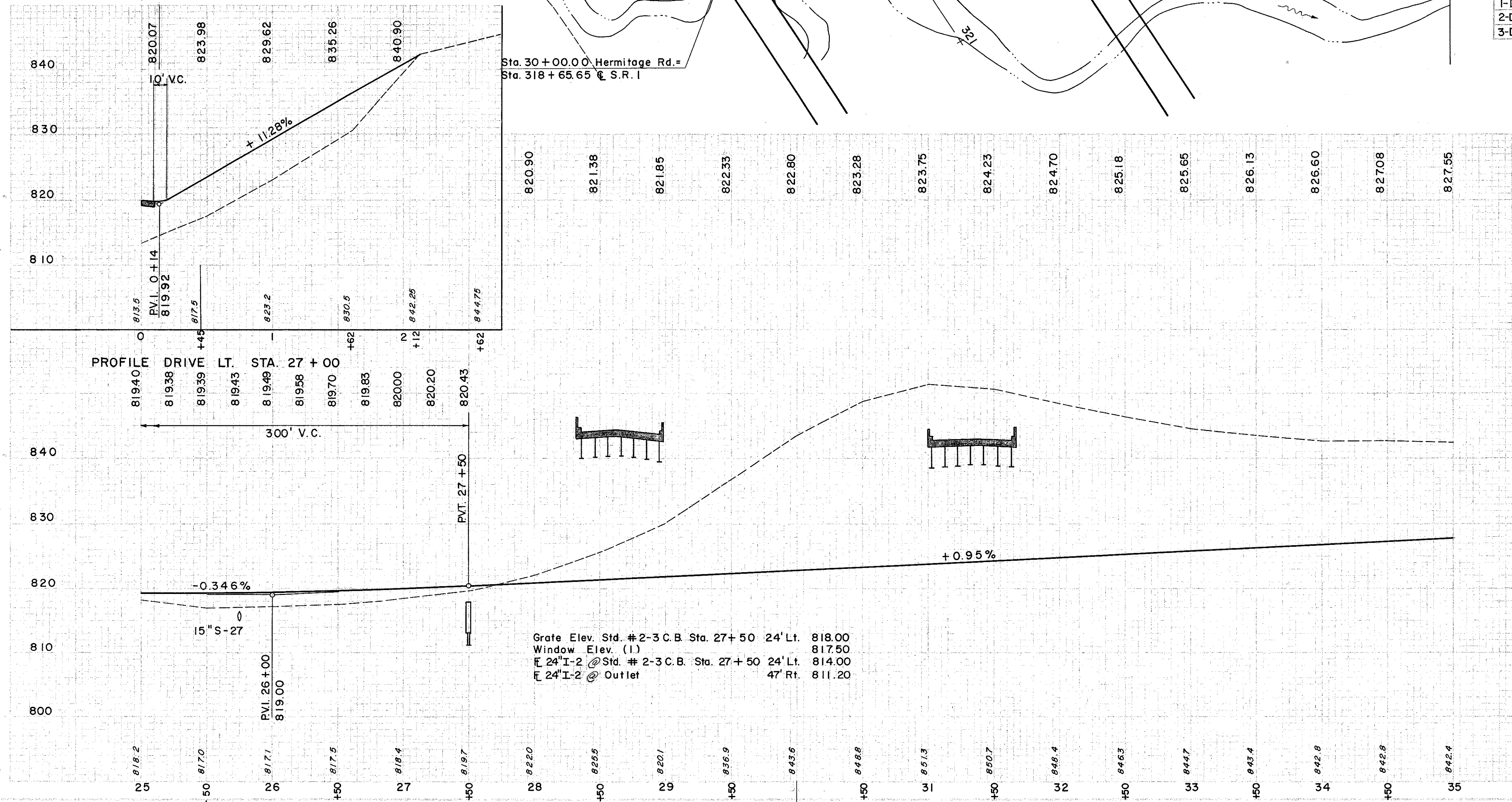
FOR DRIVE CROSS SECTIONS SEE SHEET NO. 240

DRIVE CURVE DATA
Δ = 90°
R = 80'
L = 125.66'

CURVE DATA
P.I. Sta. 25+60.05
Δ = 10°44'26"
D = 12°00'
R = 477.47'
L = 89.51'
T = 44.88'

CURVE DATA
P.I. Sta. 34+66.91
Δ = 19°25'
D = 8°00'
R = 716.20'
L = 242.71'
T = 122.53'

FOR STRUCTURE DETAILS SEE SHEET NO. 267



P PAVEMENT

REF. NO.	STATION	ROAD MIX BIT. MATL.	SEAL COAT BIT. MATL.	T-32			T-30	E-1	B-19	I-9	I-22
				NO.46 AGGR. FOR ROAD MIX	NO.6 AGGR. FOR CHOKE	NO.6 AGGR. FOR SEAL COAT					
1-P	24+50 TO 39+00	2610	725	162	12	23	1160	2900	425	423	358
2-P	0+09 TO 2+12	243	68	15	1	2	108	270	38		
TOTALS		2853	793	177	13	25	1268	3170	463	423	358

S STRUCTURES

REF. NO.	STATION	SIDE	EXC. FOR STRUCT.	E-2	E-3	S-1 CONC. FOR STRUCT. CLASS "E"	L-10	S-27
1-S	25+75	C	16	12	0.56	6	60	

D DRAINAGE

REF. NO.	STATION	SIDE	PIPE REMOVED	UNDER
1-D	25+60	C	32	
2-D	27+80	Lt.	38	
3-D	32+79	Lt.	17	

SUPERELEVATION TABULATION

STATION	LT. EDGE	℄	RT. EDGE
25+00	819.55	819.40	819.25
+25	819.67	819.38	819.09
+50	819.82	819.39	818.96
+75	819.95	819.43	818.91
26+00	819.89	819.49	819.09
+25	819.65	819.58	819.31
+50	819.85	819.70	819.55
+75	819.85	819.83	819.69
27+00	819.95	820.00	819.86
+25	820.09	820.20	820.06
+50	820.29	820.43	820.29
32+00	824.56	824.70	824.56
+25	824.83	824.94	824.80
+50	825.13	825.18	825.04
+75	825.44	825.41	825.27
33+00	825.80	825.65	825.50
+25	826.17	825.89	825.61
+50	826.53	826.13	825.73
+75	826.89	826.36	825.83
34+00	827.25	826.60	825.95
+25	827.59	826.84	826.09
+50	827.83	827.08	826.33
+75	828.06	827.31	826.56
35+00	828.30	827.55	826.80
+25	828.48	827.79	827.10
+50	828.59	828.03	827.47
+75	828.66	828.22	827.78
36+00	828.66	828.35	828.04
+25	828.59	828.40	828.21
+50	828.43	828.37	828.23
+75	828.23	828.26	828.12
37+00	827.99	828.08	827.94
+25	827.68	827.82	827.68

Excavation = 43,172 C.Y.
 Embankment = 11,064 C.Y.
 Embankment @ 18" = 13,056 C.Y.