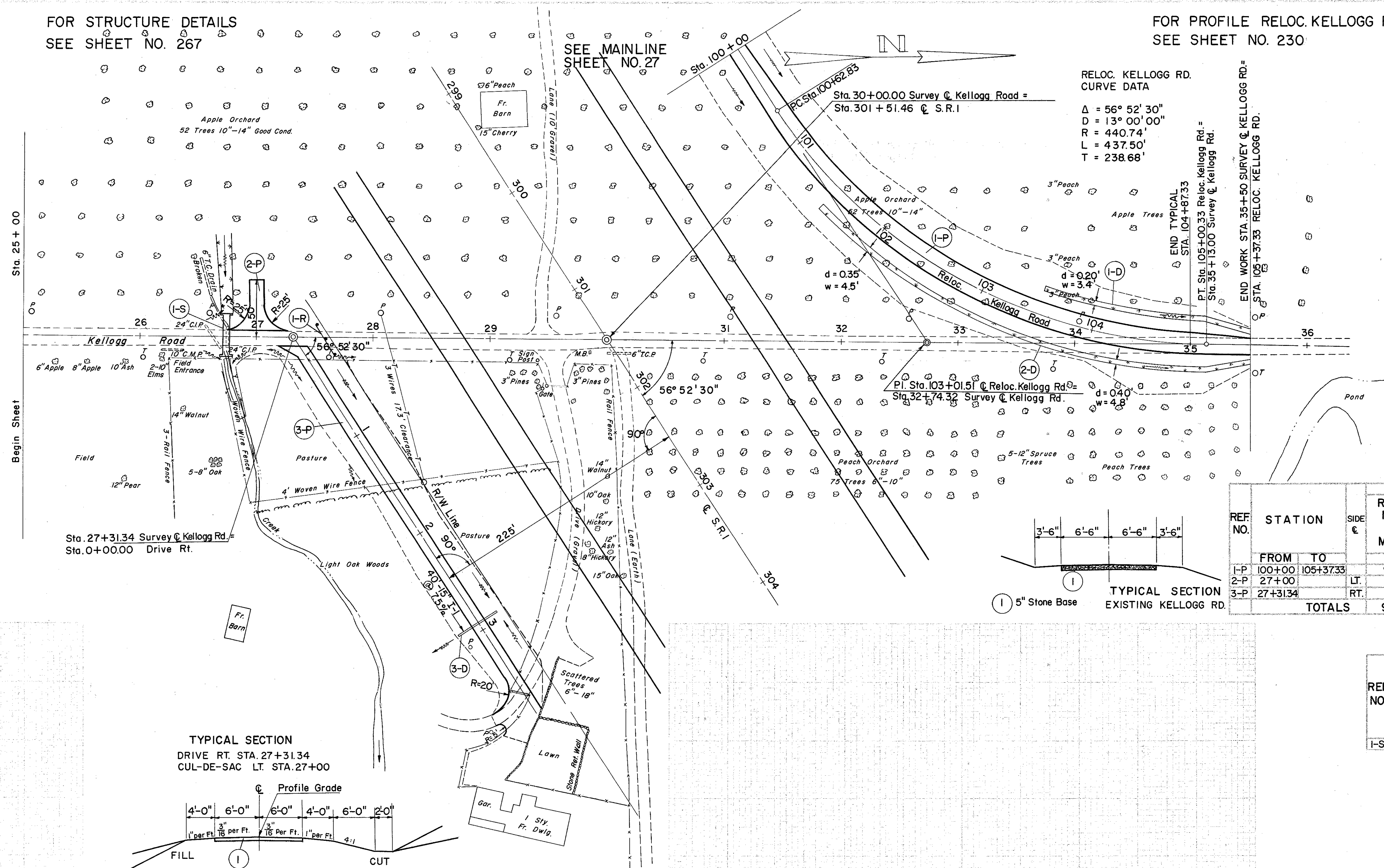


FOR STRUCTURE DETAILS
SEE SHEET NO. 267

FOR PROFILE RELOC. KELLOGG RD.
SEE SHEET NO. 230

LAKE COUNTY
LAK-1-10.38



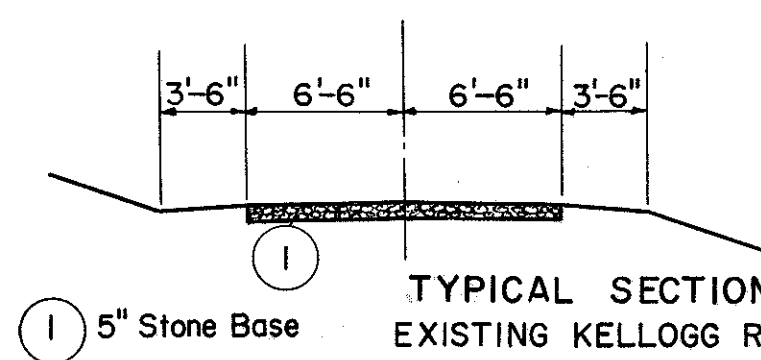
RELOC. KELLOGG RD.
CURVE DATA
 $\Delta = 56^\circ 52' 30''$
 $D = 13^\circ 00' 00''$
 $R = 440.74'$
 $L = 437.50'$
 $T = 238.68'$

SUPERELEVATION TABULATION RELOC. KELLOGG ROAD

STATION	LT. EDGE	CENTER LINE	RT. EDGE	WIDTH LT.
+25	860.47	860.60	860.47	8.0
+50	860.02	860.15	860.04	8.0
+75	859.57	859.70	859.64	8.0
100+00	859.10	859.25	859.28	8.2
+25	858.48	858.80	858.95	8.9
+50	857.87	858.35	858.63	9.6
+75	857.20	857.87	858.26	10.7
101+00	856.50	857.31	857.84	11.1
+25	855.84	856.69	857.33	11.9
+50	854.99	855.99	856.65	12.0
+75	854.23	855.23	855.89	12.0
102+00	853.40	854.40	855.06	12.0
+25	852.49	853.49	854.15	12.0
+50	851.52	852.52	853.18	12.0
+75	850.48	851.48	852.14	12.0
103+00	849.37	850.37	851.03	12.0
+25	848.19	849.19	849.85	12.0
+50	846.98	847.94	848.58	11.8
+75	845.85	846.65	847.17	10.9
104+00	844.72	845.36	845.75	10.0
+25	843.66	844.08	844.29	8.9
+50	842.47	842.79	842.93	8.2
+75	841.35	841.51	841.52	7.3
105+00	840.07	840.22	840.16	6.4
+25	838.79	838.94	838.82	5.5

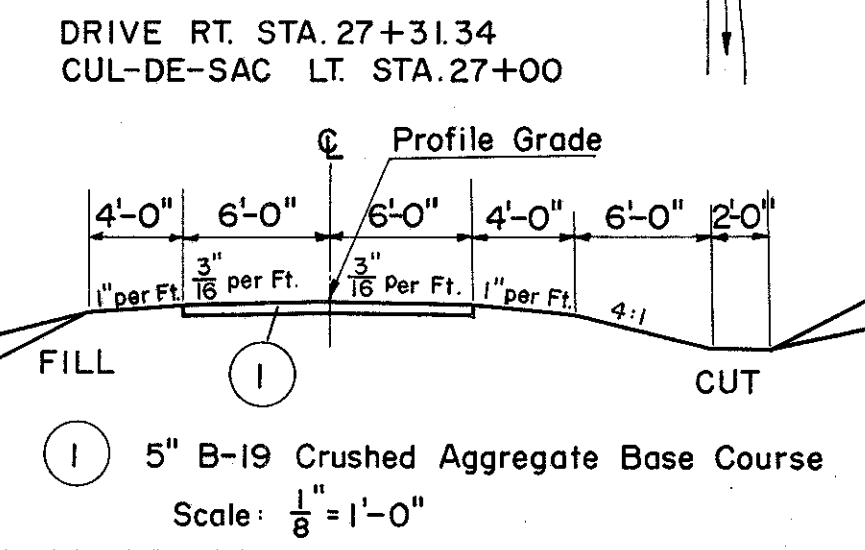
(P) PAVEMENT

REF. NO.	STATION	SIDE	ROAD MIX BIT. MATL.	SEAL COAT BIT. MATL.	T-32		T-30	B-19	I-22	E-1	I-9	
					#46 AGGR. FOR ROAD MIX	#6 AGGR. FOR CHOKE						BIT. PRIME COAT
I-P	100+00	LT.	983	273	61	4	9	437	160	135	1092	198
2-P	27+00	LT.							12		88	
3-P	27+31.34	RT.							85		610	
TOTALS			983	273	61	4	9	437	257	135	1790	198



Sta. 27+31.34 Survey @ Kellogg Rd.
Sta. 0+00.00 Drive Rt.

TYPICAL SECTION



(S) STRUCTURES

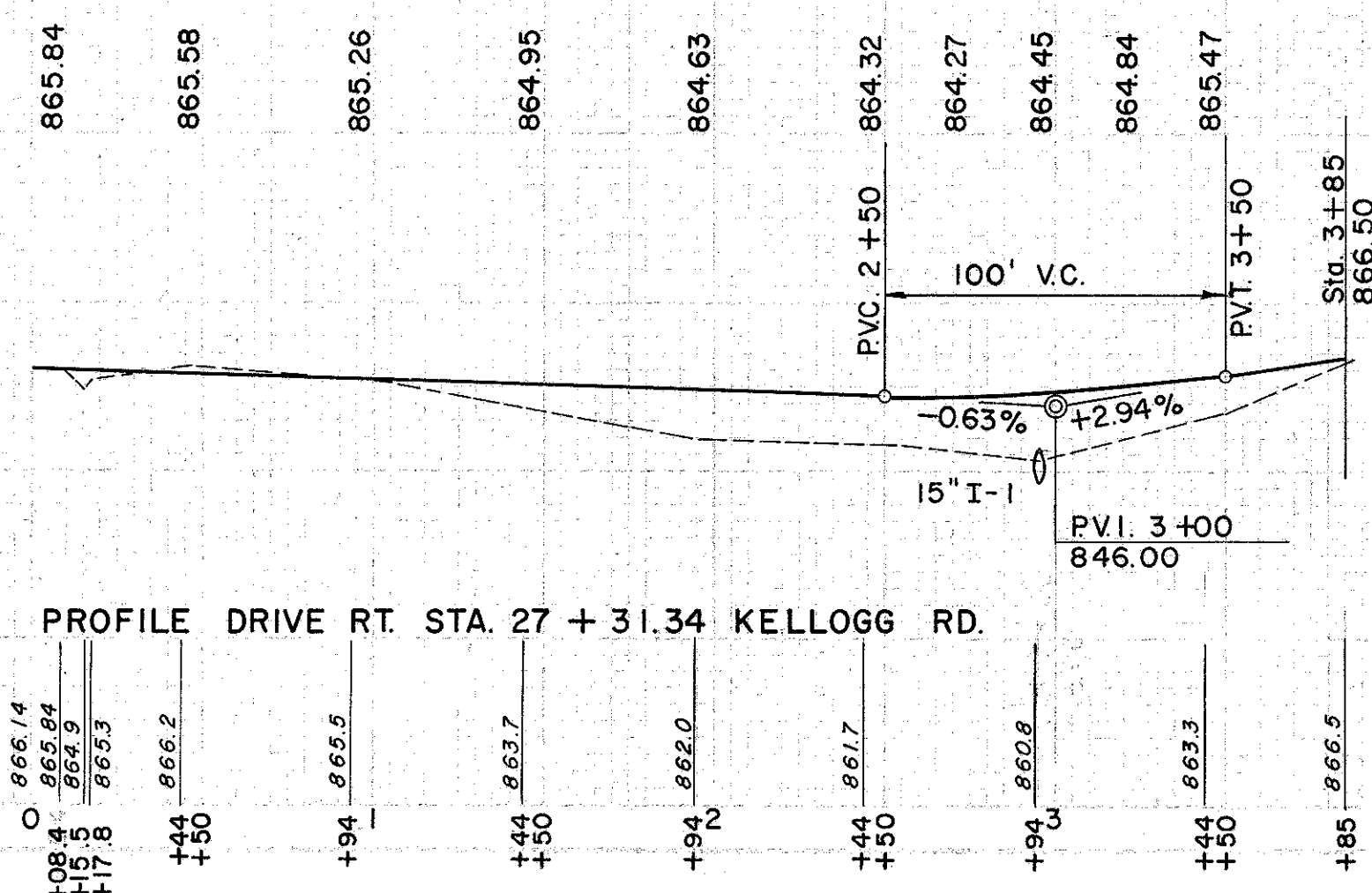
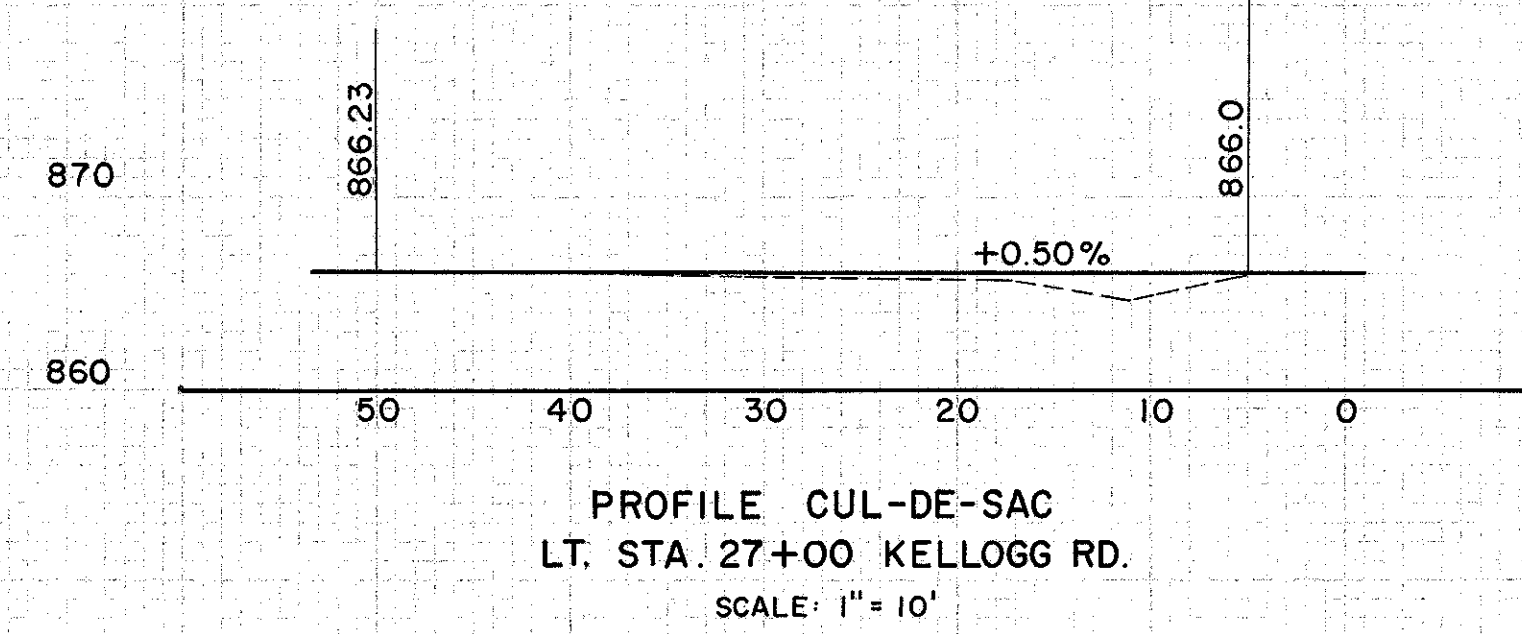
REF. NO.	STATION	SIDE	STRUCTURES				
			E-2 EXC. FOR STRUCT.	E-3 CHANNEL EXC.	S-1 CONC. FOR STRUCT. CL. "E"	L-10 SODDING	S-27 58" x 36" PIPE FOR RDWY. CULVERTS SEC. M-6.4(I)(d)
I-S	26+75	℄	37	13	1.80	7	36

(D) DRAINAGE

REF. NO.	STATION	SIDE	DRAINAGE	
			I-1 15" PIPE FOR DRIVEWAYS L.F.	L-10 SODDING S.Y.
I-D	102+50	LT.		71
2-D	101+50	RT.		193
3-D	2+95 Dr	℄	40	

(R) ROADWAY

REF. NO.	STATION	SIDE	ROADWAY	
			I-15 GUARD RAIL WIRE CABLE TYPE (3 CABLES) L.F.	L.F.
I-R	27+58 KELLOGG RD.	℄		32



EXCAVATION	=	3720 C.Y.
EMBANKMENT	=	11 C.Y.
EMBANKMENT	=	18 C.Y.