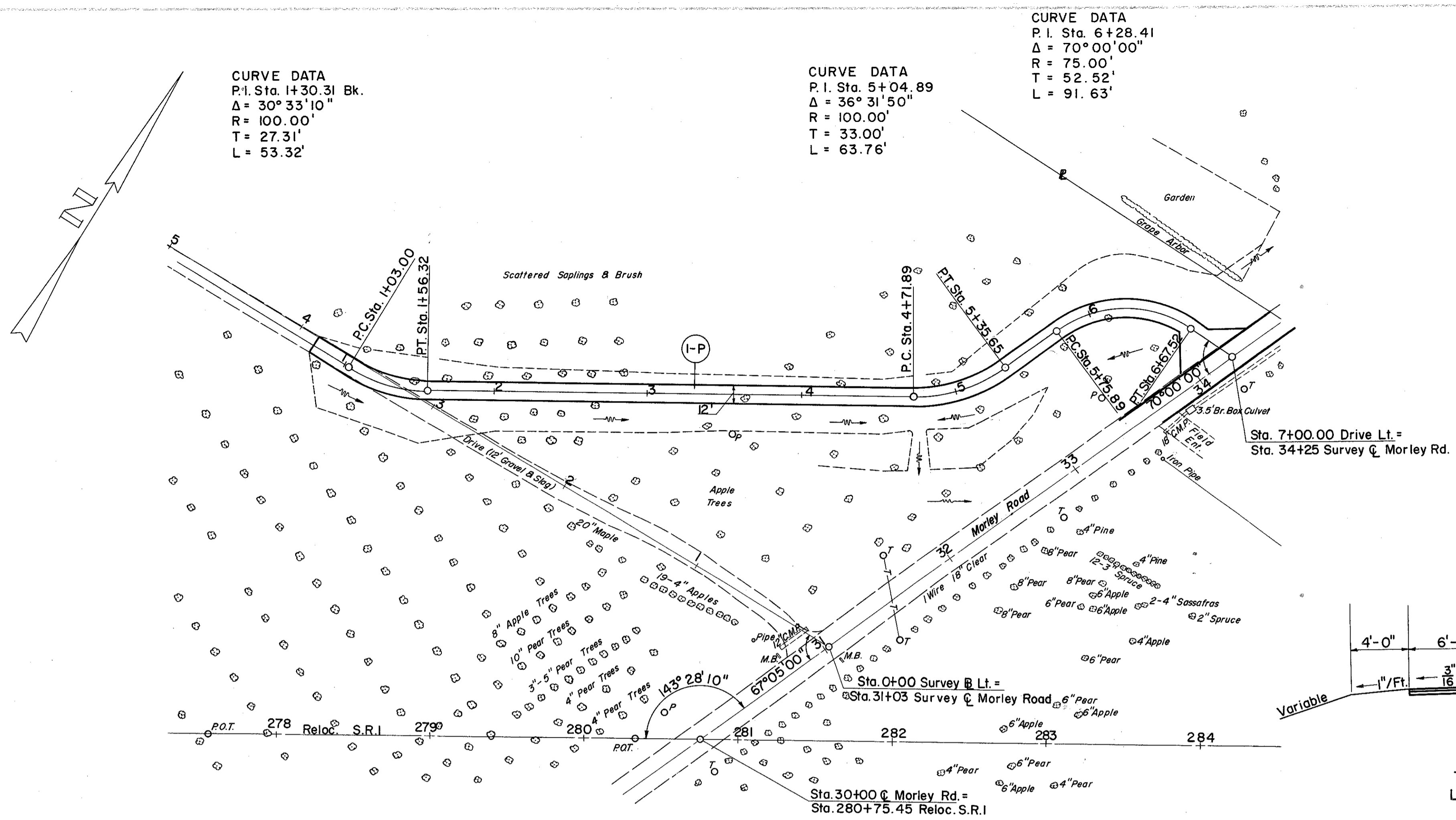
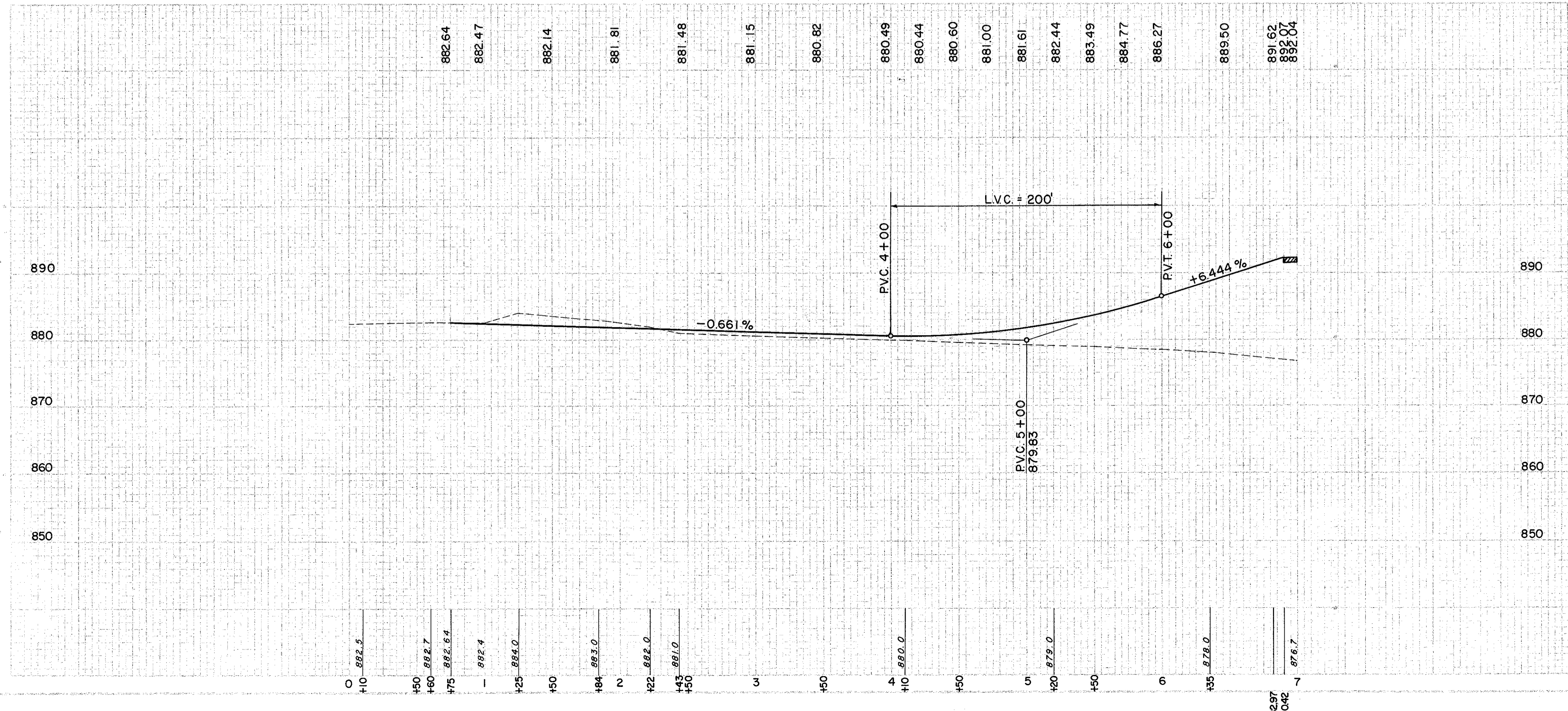
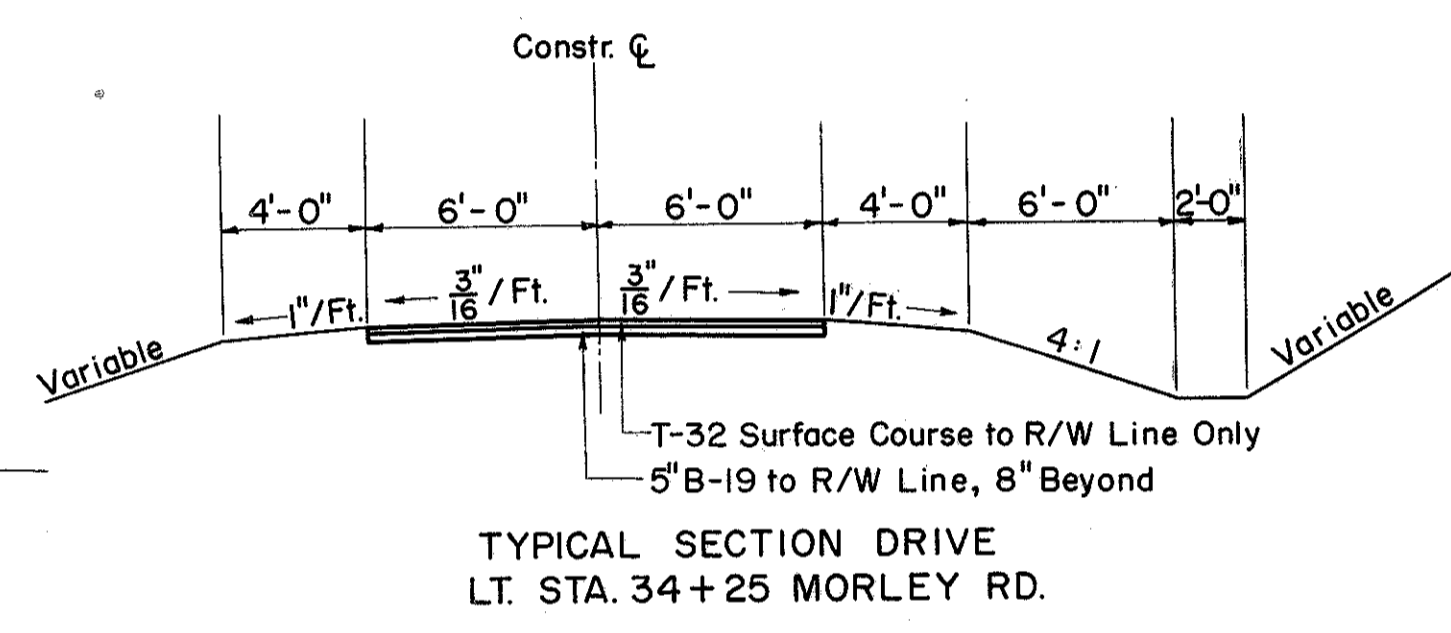


LAKE COUNTY  
LAK-1-10.38



(P) PAVEMENT

REF. NO.	STATION	SIDE	B-19		E-1	ROAD SEAL COAT BIT. MAT'L GAL.	T-32	#6 AGGR. FOR CHOKE C.Y.	#6 AGGR. FOR SEAL COAT	T-30
			5\"	8\"						
I-P	0+75	6+91	183	866	106	29	7	1	1	41



EXCAVATION	=	513 C.Y.
EMBANKMENT	=	1823 C.Y.
EMBANKMENT - 18%	=	2151 C.Y.