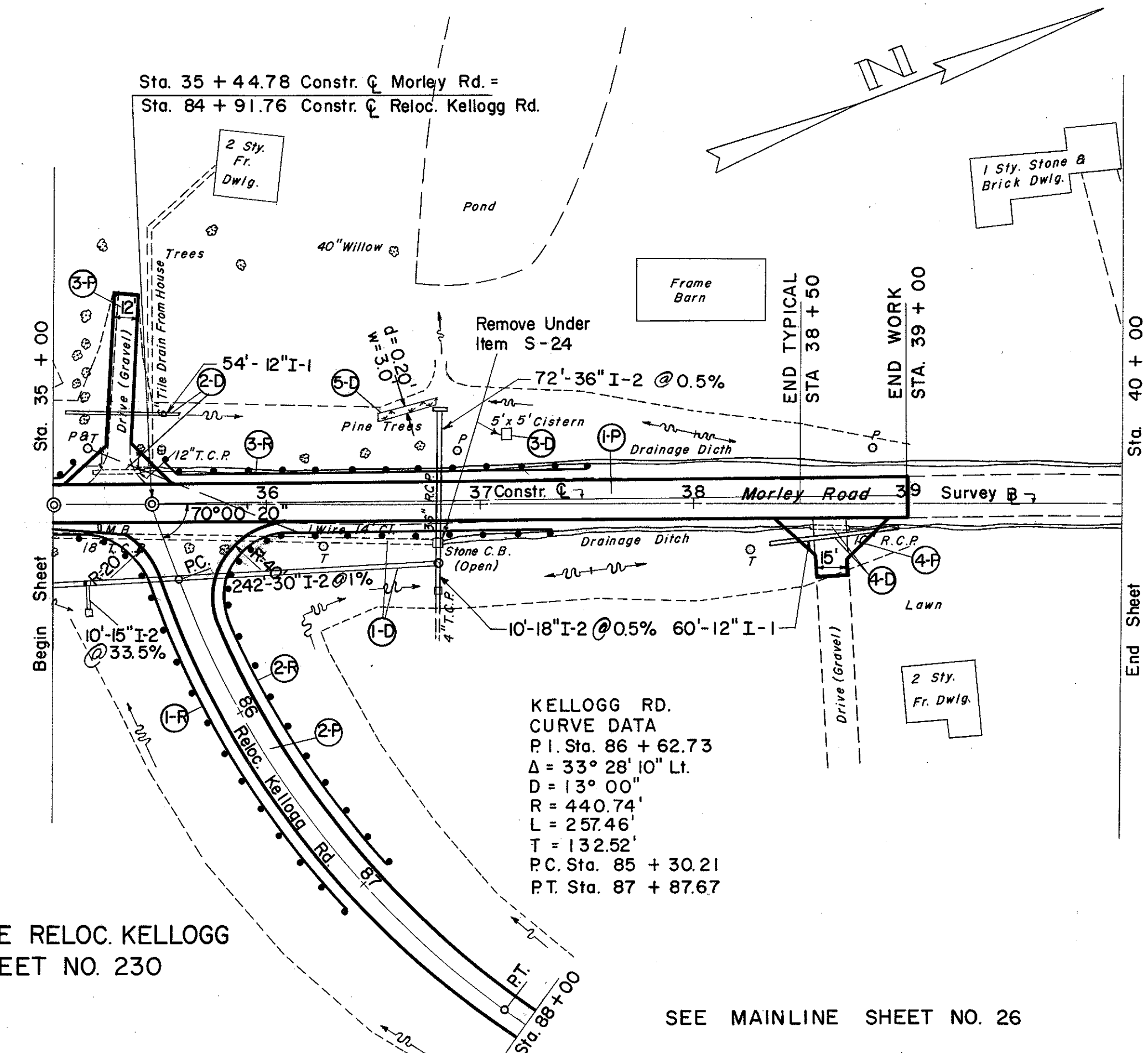


LAKE COUNTY  
LAK-1-1038



P.I. Sta. 35+00  
Δ = 0° 30' Lt.  
No Curve

FOR PROFILE RELOC. KELLOGG RD., SEE SHEET NO. 230

SEE MAINLINE SHEET NO. 26

D DRAINAGE

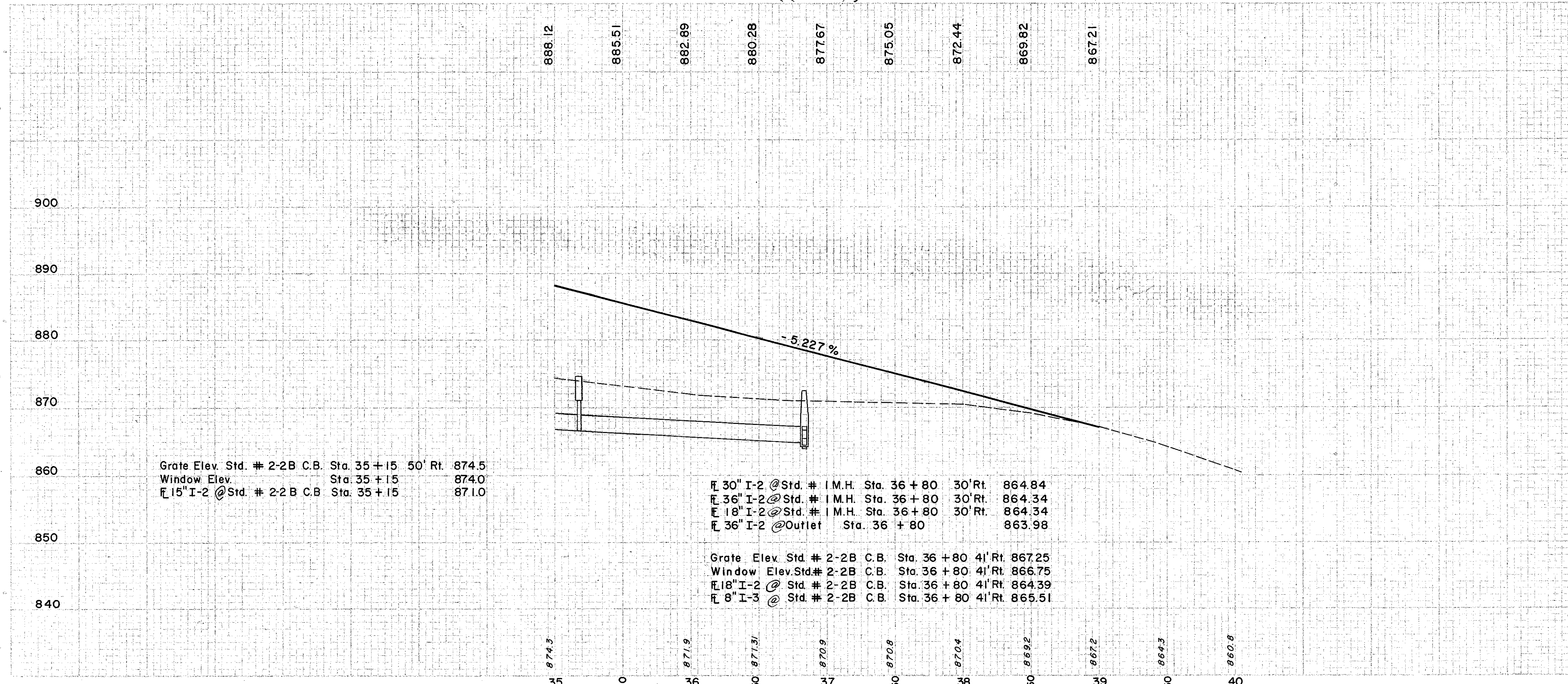
REF. NO.	STATION	SIDE	I-1		I-2		I-5		I-8		L-10	S-1	S-24	E-12	E-2	I-3
			PIPE FOR DRIVEWAYS	CLASS "A" STORM SEWER	CLASS "A" STORM SEWER UNDER PAVT	15" X 30" TEE SEC.	STD. NO. 2-B CATCH BASIN	STD. NO. 1 M.H.	CONC. FOR STRUCT. CL. "E"	REMOVED OF EXISTING STRUCT.						
1-D	35+00	RT.		10	10		176	72		2		0.51	LUMP	219	2	10
2-D	35+06	LT.	54										LUMP			
3-D	37+13	LT.														
4-D	38+44	RT.	60													
5-D	36+50	LT.								10						

P PAVEMENT

REF. NO.	STATION	SIDE	T-32		NO. 46 AGGR. FOR ROAD MIX	NO. 6 AGGR. FOR CHOKE	NO. 6 AGGR. FOR SEAL COAT	T-30	B-19	I-22	E-1	I-9
			ROAD MIX BIT. MATL.	SEAL COAT BIT. MATL.								
1-P	35+00	RT.	723	201	45	3	6	321	118	99	803	153
2-P	85+01.13	RT.	561	156	35	2	5	249	92	77	623	117
3-P	35+30	LT.	106	29	7	1	1	47	27		164	
4-P	38+65	RT.	85	24	5	1	1	38	13		94	
TOTALS			1475	410	92	7	13	655	250	176	1684	270

R ROADWAY

REF. NO.	STATION		SIDE	I-15 GUARD RAIL WIRE CABLE TYPE (3 CABLES)
	FROM	TO		
1-R	35+08	RT. 87+04	RT.	240
2-R	87+00	RT. 37+32	RT.	320
3-R	35+50	LT. 37+50	LT.	200
TOTAL				760



SUPERELEVATION TABLE KELLOGG ROAD RELOC.

STATION	LT. EDGE	CENTERLINE	RT. EDGE
85 + 00	885.23	885.65	886.07
+ 25	884.84	885.26	885.68
+ 50	884.45	884.87	885.29
+ 75	884.06	884.48	884.90
86 + 00	883.67	884.09	884.51
+ 25	883.28	883.70	884.12
+ 50	882.89	883.31	883.73
+ 75	882.50	882.92	883.34
87 + 00	882.11	882.53	882.95
+ 25	881.71	882.14	882.57
+ 50	881.35	881.75	882.15
+ 75	881.07	881.30	881.52
88 + 00	880.70	880.85	881.00
+ 25	880.27	880.40	880.42
+ 50	879.82	879.95	879.90
+ 75	879.37	879.50	879.38
89 + 00	878.92	879.05	878.92

STA. 85 + 30.21 TO STA. 88 + 00 KELLOGG RD.	
EXCAVATION	= 149 C.Y.
EMBANKMENT	= 4464 C.Y.
EMBANKMENT + 18 %	= 5268 C.Y.
STA. 35 + 00 TO STA. 39 + 00	
EXCAVATION	= 836 C.Y.
EMBANKMENT	= 5056 C.Y.
EMBANKMENT + 18 %	= 5966 C.Y.