

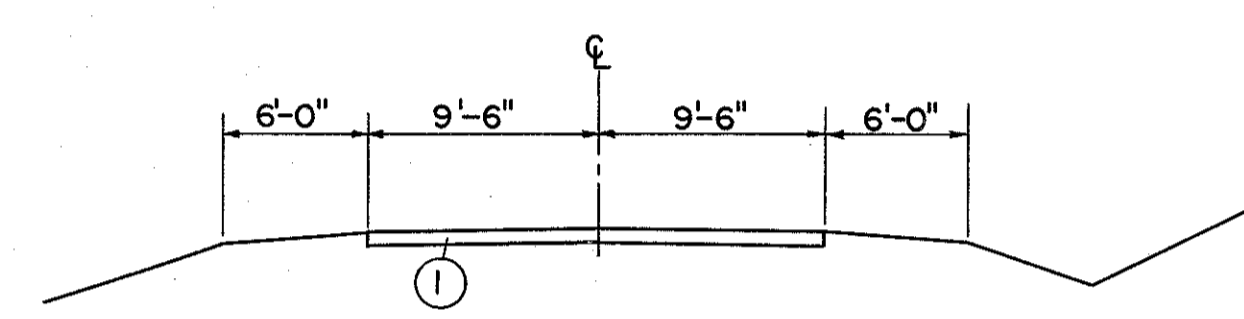
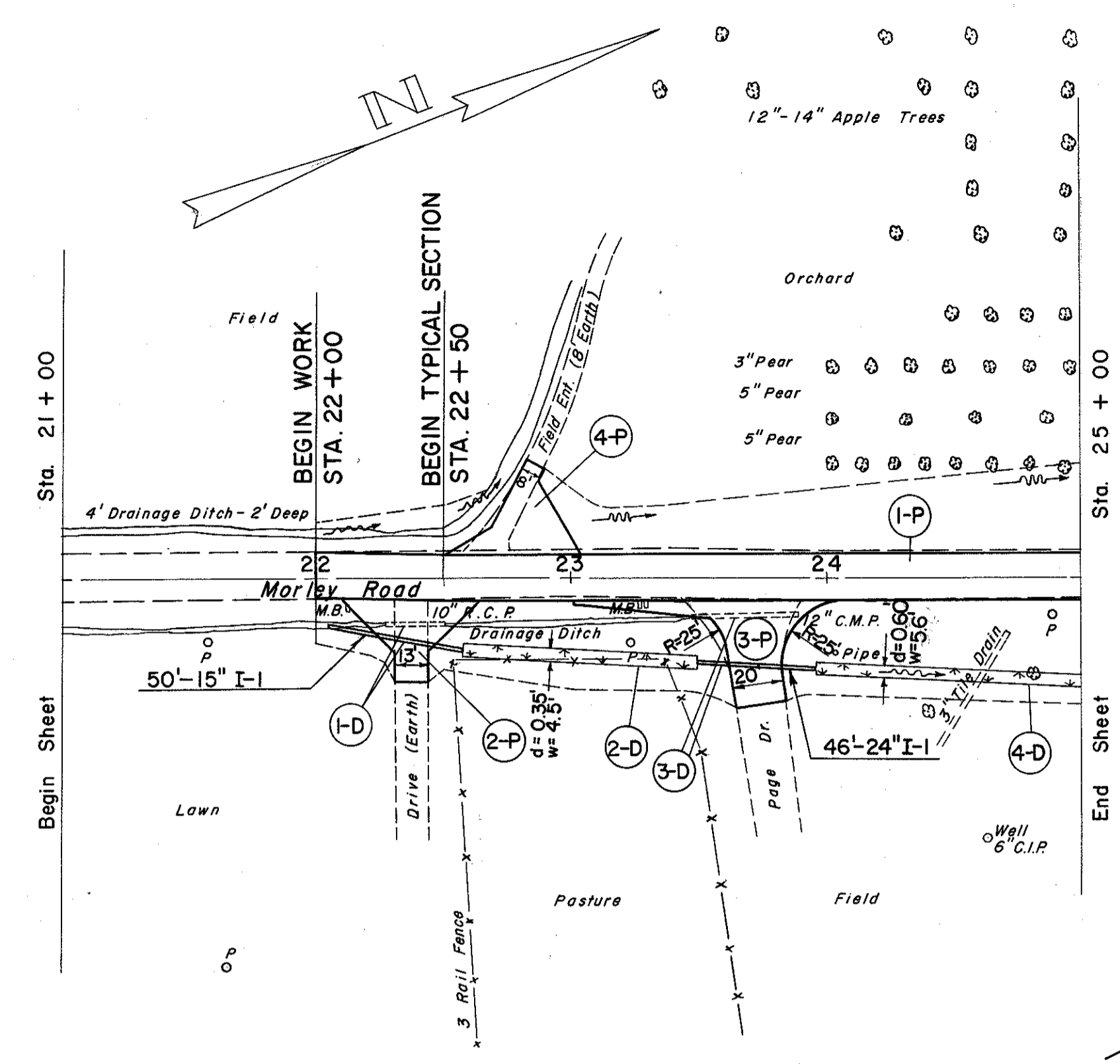
LAKE COUNTY
LAK-I-1038

D DRAINAGE

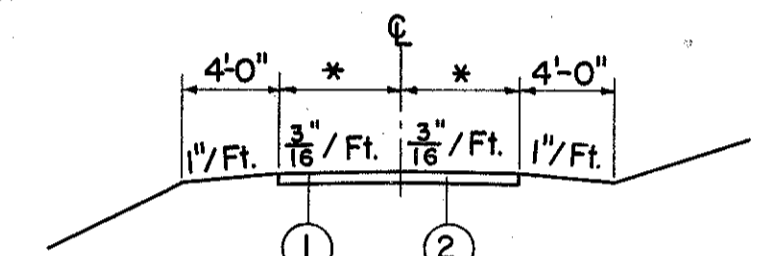
REF. NO.	STATION	SIDE	I-1		L-10	E-12
			PIPE FOR DRIVEWAYS		SODDING	PIPE REMOVED
			15"	24"		15" 8" UNDER
	FROM	TO	L. F.	S. Y.	L. F.	
I-D	22+08	22+58	Rt.	50		24
2-D	22+58	23+51	Rt.		47	
3-D	23+51	23+97	Rt.		46	42
4-D	23+97	25+00	Rt.		57	

P PAVEMENT

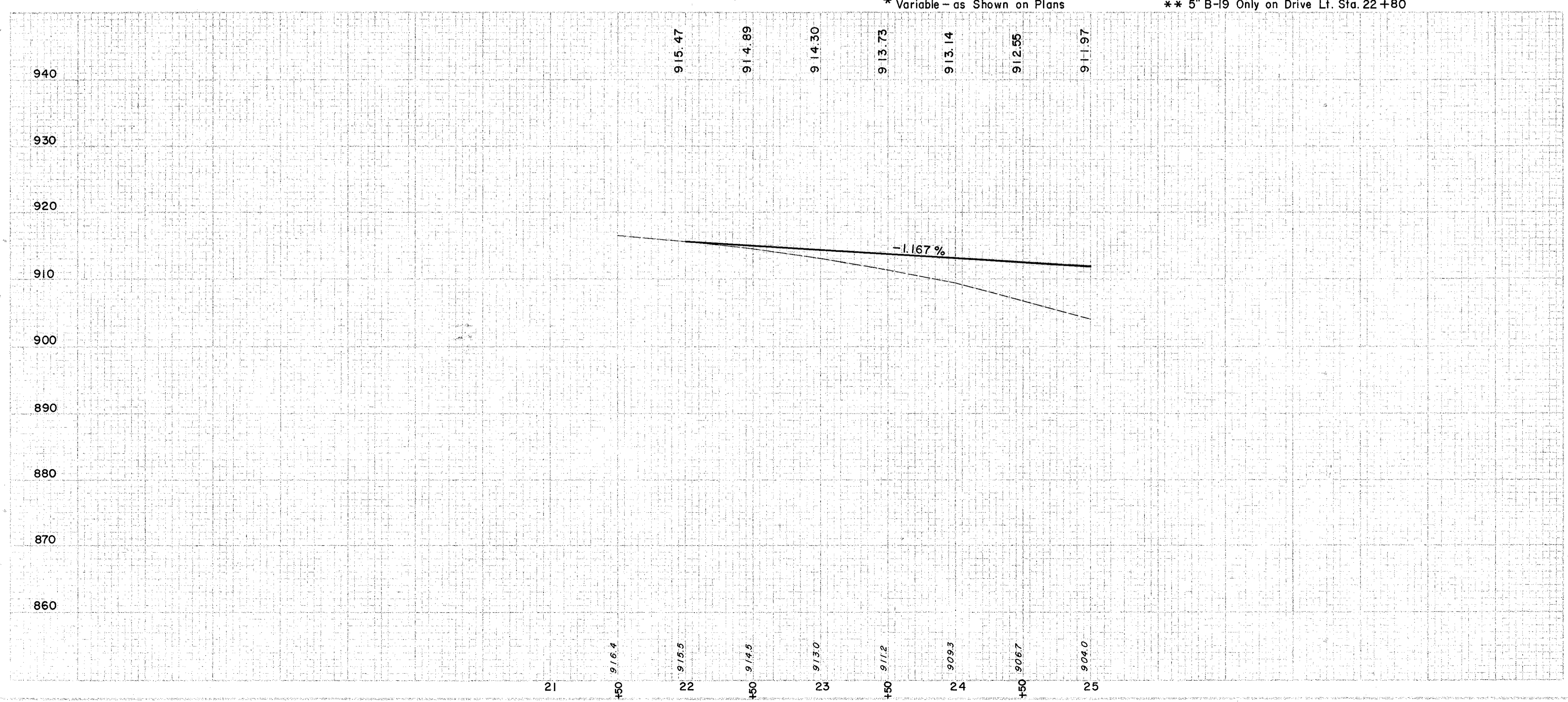
REF. NO.	STATION	SIDE	ROAD MIX	SEAL COAT	T-32			T-30	B-19	I-22	E-1	I-9
			BITUM. MATL.	BITUM. MATL.	NO. 46 AGGR. FOR ROAD MIX	NO. 6 AGGR. FOR CHOKE	NO. 6 AGGR. FOR SEAL COAT	BITUM. PRIME COAT	AGGR. BASE COURSE	4" SUBBASE	COMP. SUBGR.	STONE UNDER-DRAIN (NO.2)
			GAL.	GAL.	C.Y.	C.Y.	C.Y.	GAL.	C.Y.	C.Y.	S.Y.	L.F.
I-P	22+00	25+00	543	151	34	2	5	241	88	74	603	117
2-P	22+38		82	23	5	1	1	36	13		91	
3-P	23+75		142	40	9	1	1	63	22		158	
4-P	22+80							13			96	
TOTALS			767	214	48	4	7	340	136	74	948	117



① 3" Bit. Mac. on 5" Stone Base
TYPICAL SECTION EXISTING MORLEY ROAD



** TYPICAL SECTION DRIVES
① T-32 To R/W Line Only
② B-19 5" To R/W Line, 8" Beyond
** 5" B-19 Only on Drive Lt. Sta. 22+80



EXCAVATION	=	483 C.Y.
EMBANKMENT	=	1518 C.Y.
EMBANKMENT @ 18%	=	1791 C.Y.