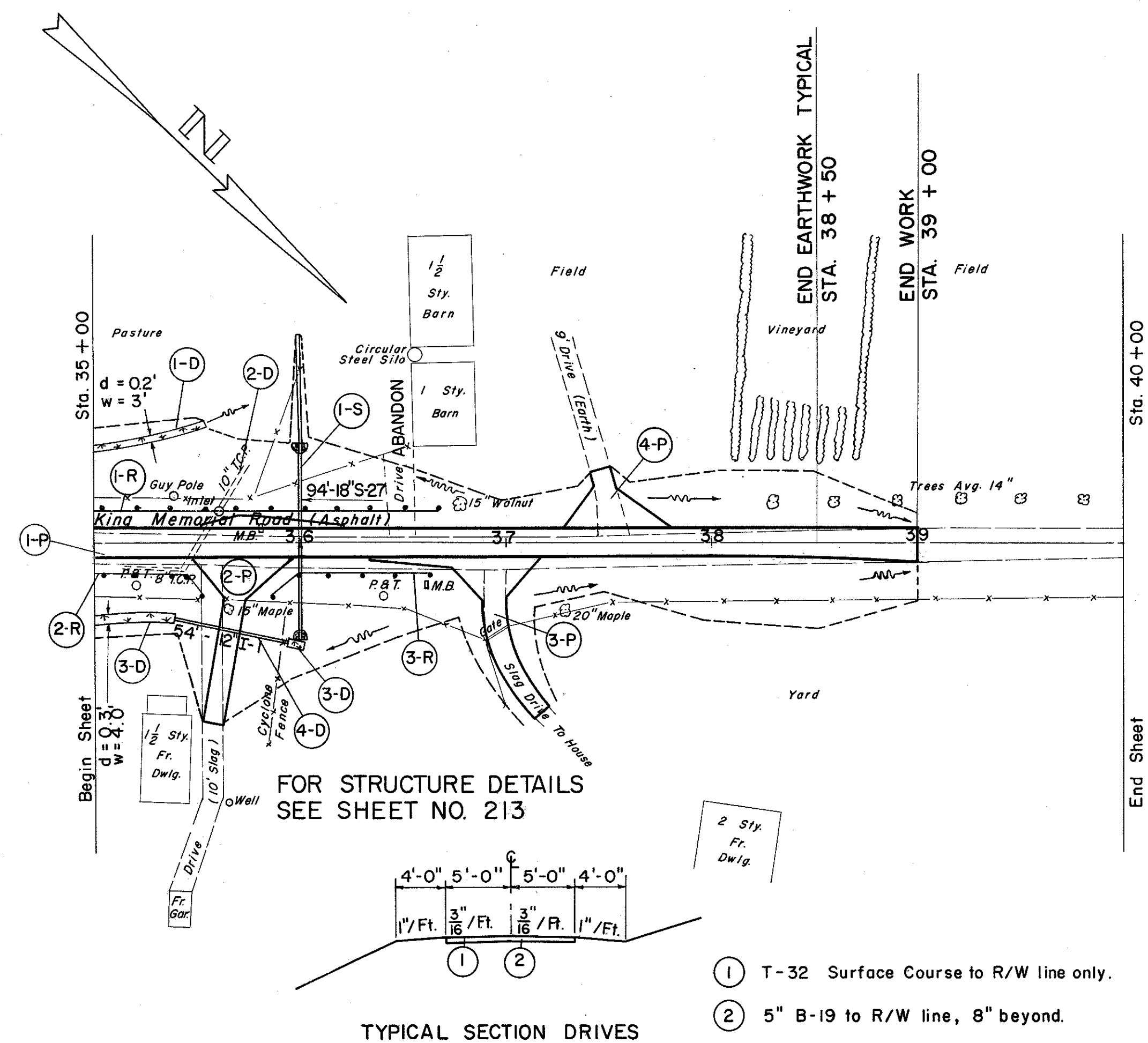
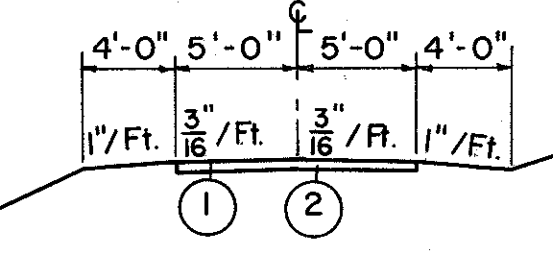


LAKE COUNTY
LAK-1-10.38



FOR STRUCTURE DETAILS
SEE SHEET NO. 213



- ① T-32 Surface Course to R/W line only.
- ② 5" B-19 to R/W line, 8" beyond.

(P) PAVEMENT

REF. NO.	STATION	SIDE	T-32		NO. 46		NO. 6		T-30		B-19		I-22		E-1		I-9	
			ROAD MIX BITUM. MATL.	SEAL COAT BITUM. MATL.	AGGR. FOR ROAD MIX	NO. 6 AGGR. FOR CHOKE	NO. 6 AGGR. FOR SEAL COAT	BIT. PRIME COAT	5" AGGR. BASE COURSE	4" SUBBASE	COMP. SUBGR.	STONE UNDER-DRAIN (NO. 2)	C.Y.	S.Y.	L.F.	L.F.		
1-P	35+00		640	178	40	3	6	284	105	89	711	144						
2-P	35+70	RT.	95	26	6	0.4	1	42	21		136							
3-P	36+95	RT.	105	29	7	0.5	1	47	24		152							
4-P	37+50	LT.	70	19	4	0.3	1	31	11		78							
TOTALS			910	252	57	4	9	404	161	89	1077	144						

(D) DRAINAGE

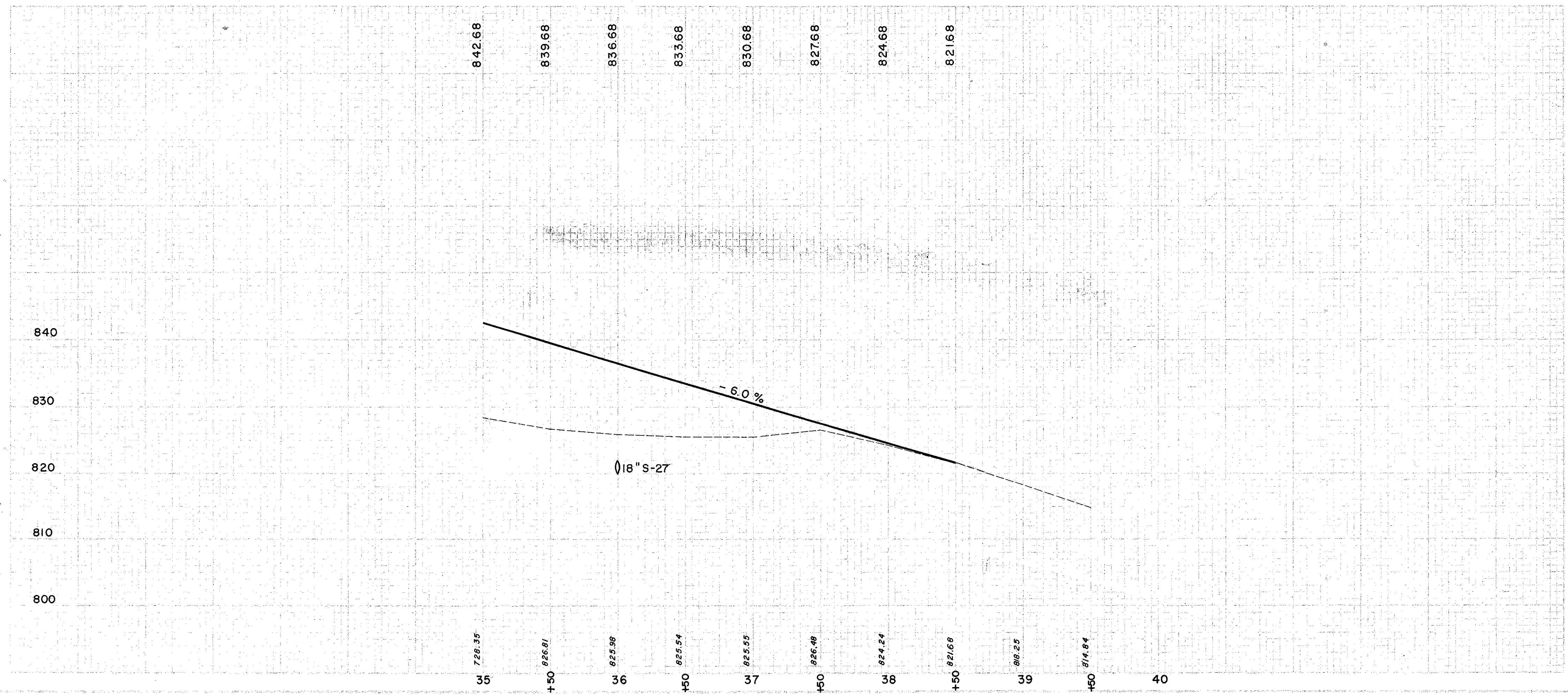
REF. NO.	STATION	SIDE	I-1		L-10		E-12	
			12" PIPE FOR DRIVEWAYS	SODDING	PIPE REMOVED 15" & UNDER	L.F.	S.Y.	L.F.
1-D	35+00	35+50	LT.		17			
2-D	35+10	35+70					100	
3-D	35+00	36+30	Rt.		22			
4-D	35+40	35+90	Rt.	54				

(S) STRUCTURES

REF. NO.	STATION	E-2		E-3		S-1		L-10		S-27	
		EXC. FOR STRUCT.	CHANNEL EXC.	CONC. FOR STRUCT. CL. "E"	SODDING	PIPE FOR RDWY. CULVERTS SEC. M-66(c)	L.F.	L.F.			
S-1	36+00	33	8	0.60	2	94					

(R) ROADWAY

REF. NO.	STATION		SIDE	I-15	
	FROM	TO		GUARD RAIL WIRE CABLE TYPE (3 CABLES)	L.F.
1-R	34+91	36+67	LT.		176
2-R	34+96	35+60	Rt.		80
3-R	35+85	36+65	Rt.		80
TOTAL					336



Excavation	=	676 C.Y.
Embankment	=	4,319 C.Y.
Embankment 18\"/>		