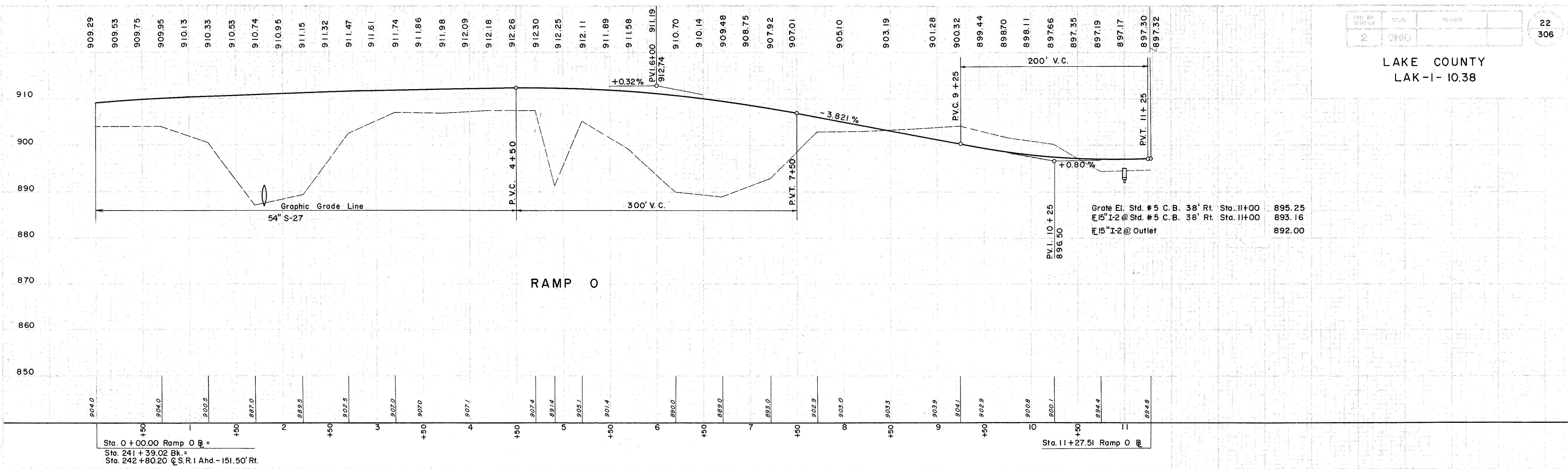
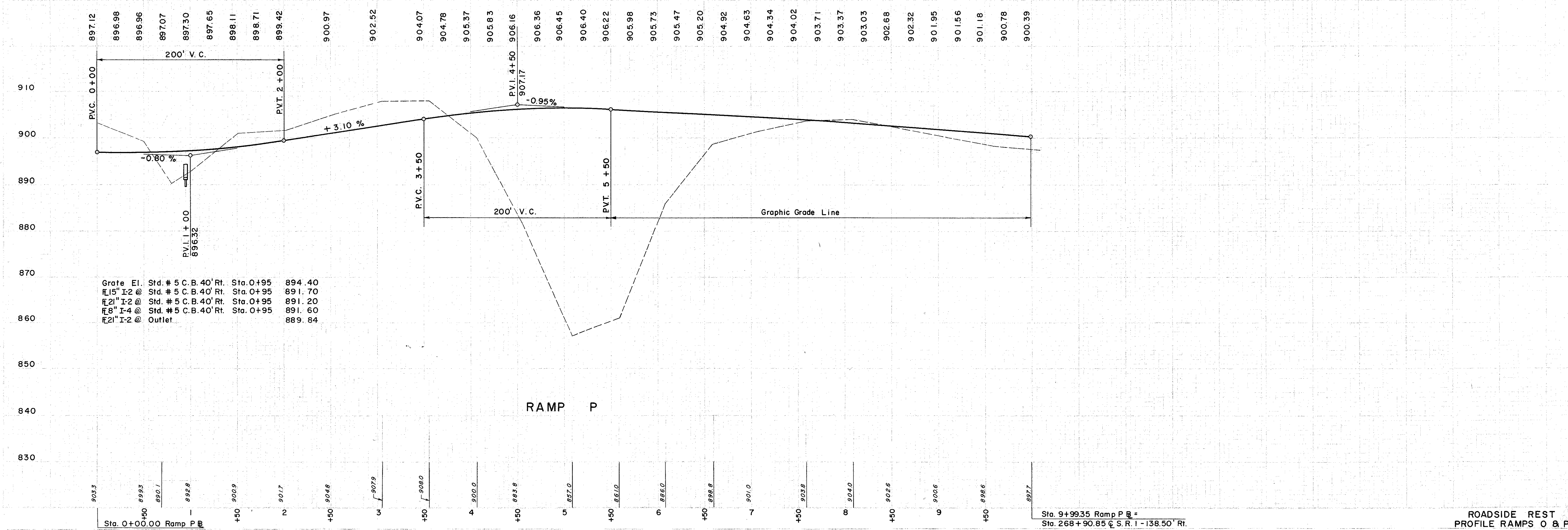


LAKE COUNTY  
LAK-1-10.38



Sta. 0+00.00 Ramp O R =  
Sta. 241+39.02 Bk =  
Sta. 242+80.20 C.S.R.1 Ahd. -151.50' Rt.

Sta. 11+27.51 Ramp O R =



Grate El. Std. # 5 C. B. 40' Rt. Sta. 0+95 894.40  
15" I-2 @ Std. # 5 C. B. 40' Rt. Sta. 0+95 891.70  
21" I-2 @ Std. # 5 C. B. 40' Rt. Sta. 0+95 891.20  
6" I-4 @ Std. # 5 C. B. 40' Rt. Sta. 0+95 891.60  
21" I-2 @ Outlet 889.84

Sta. 9+99.35 Ramp P R =  
Sta. 268+90.85 C.S.R.1 -138.50' Rt.