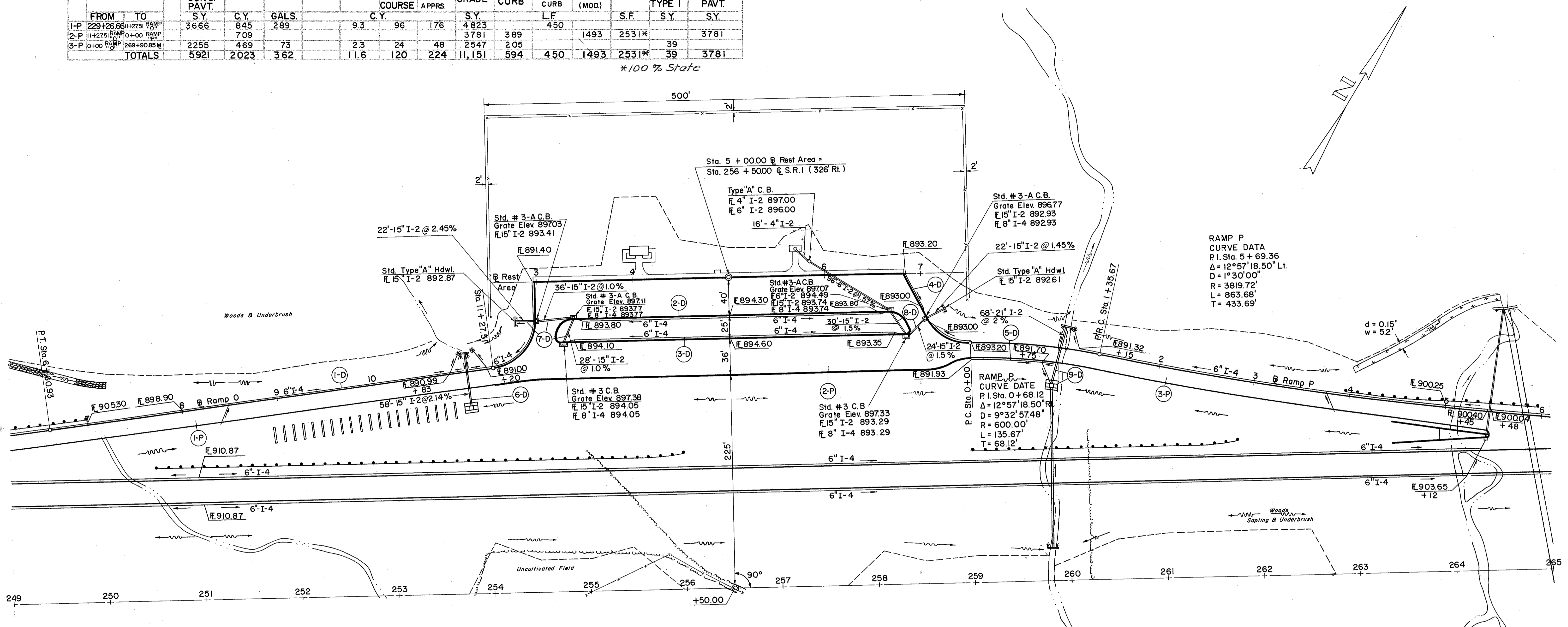


LAKE COUNTY
LAK-1-10.38

P PAVEMENT

REF. NO.	STATION	SIDE	T-71		I-22	T-31	NO. 6 AGGR.	B-219	I-18	E-1	I-12	I-13	I-21	T-71
			10" REINF. PORTLAND CONC. PAVT.	SUBBASE										
FROM	TO	S.Y.	C.Y.	GALS.	C.Y.	S.Y.	L.F.	S.F.	S.Y.	S.Y.				
1-P	229+26.66	11+27.51 RAMP	3666	845	289	9.3	96	176	4823	450	1493	2531*	39	3781
2-P	11+27.51 RAMP	0+00 RAMP		709					3781	389				
3-P	0+00 RAMP	269+90.85 M	2255	469	73	2.3	24	48	2547	205				
TOTALS			5921	2023	362	11.6	120	224	11,151	594	450	1493	39	3781

*100% State



D DRAINAGE

REF. NO.	STATION	SIDE	E-2	I-2			I-4		I-5	I-8				L-10	S-1	S-4	S-29
				EXC. FOR STRUCT.	CL. "A" STORM SEWER UNDER PAVT.	CL. "B" STORM SEWER	15" CL. "B" STORM UNDER PAVT.	6" PIPE UNDERDRAIN		8" OUTLET PIPE SEC. M-64(a)	TYPE "A" CATCH BASIN	STD. #5 CATCH BASIN	STD. #3 CATCH BASIN				
FROM	TO	C.Y.	6"	15"	21"	SHALLOW	DEEP	EA	EA	EA	S.Y.	C.Y.	LBS.	C.Y.			
1-D	7+00 RAMP	3+00 REST AREA						576	20								
2-D	3+40 REST AREA	6+70 REST AREA						310	20								
3-D	3+30 REST AREA	6+85 REST AREA						336	20								
4-D	6+88 REST AREA	0+00 RAMP						82	20								
5-D	0+00 RAMP	0+90 RAMP						100	10								
6-D	11+00 RAMP	3+40 RAMP	6		58						56	3.1	146				
7-D	11+00 RAMP	3+40 RAMP	6								2	3.1	146				
8-D	5+70 RAMP	7+20 RAMP	6	96		16*	52	24			2	3.1	146				
9-D	0+96 RAMP		6		68						2	3.1	146				

*100% State