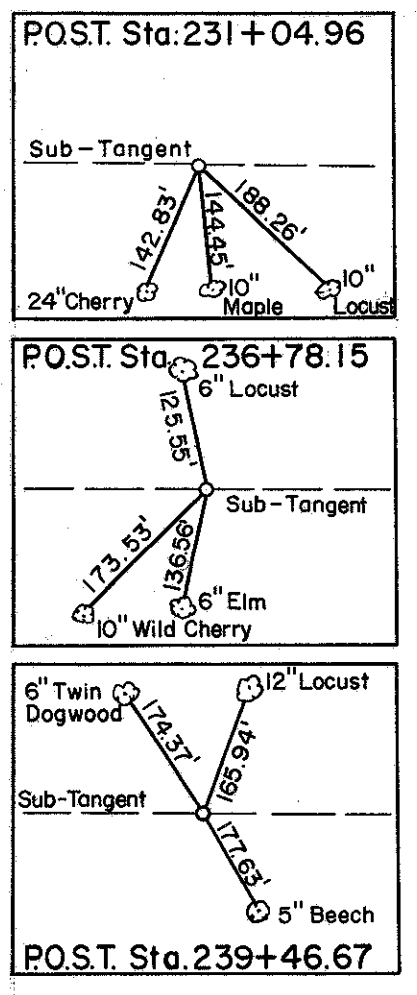
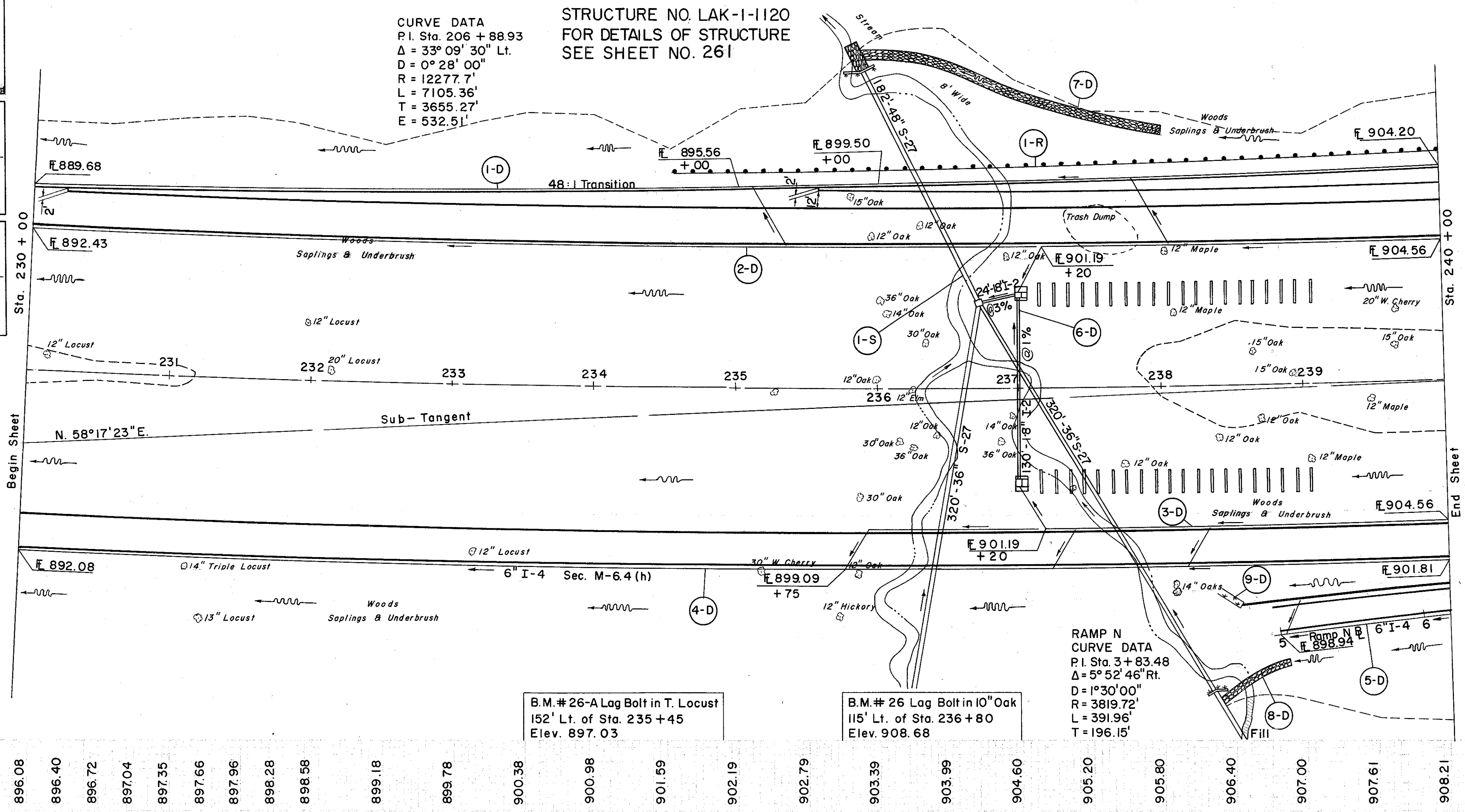


LAKE COUNTY  
LAK-1-10.38



CURVE DATA  
P.I. Sta. 206 + 88.93  
 $\Delta = 33^\circ 09' 30''$  Lt.  
 $D = 0^\circ 28' 00''$   
 $R = 12277.7'$   
 $L = 7105.36'$   
 $T = 3655.27'$   
 $E = 532.51'$

STRUCTURE NO. LAK-1-1120  
FOR DETAILS OF STRUCTURE  
SEE SHEET NO. 261



D DRAINAGE

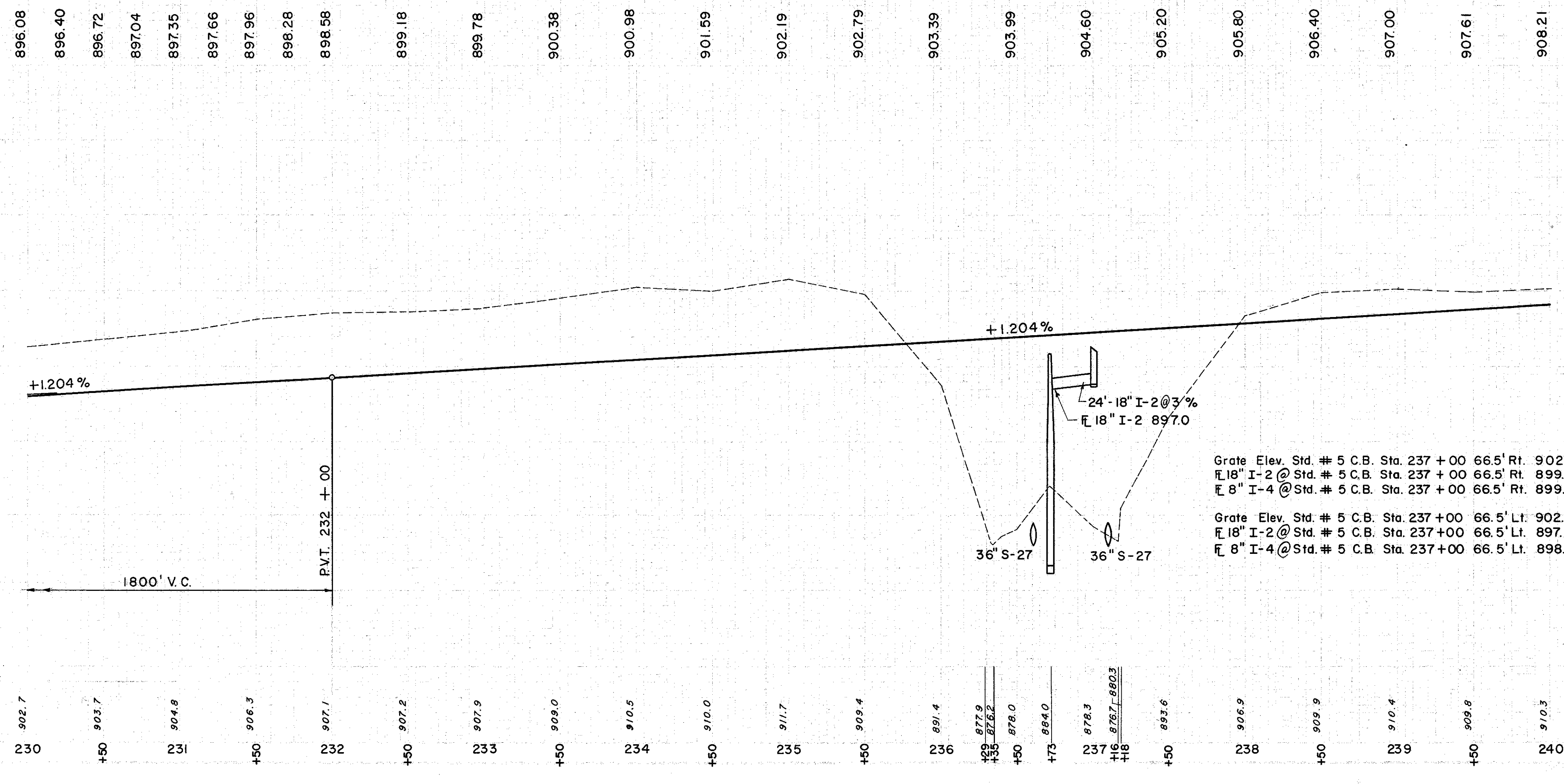
REF. NO.	STATION	SIDE	I-2		I-4		8"		I-5		I-8	I-10	I-10
			CL. "A"	STM. SWR.	6" PIPE	UNDERDRAIN	OUTLET PIPE	6" 60° WYE	6" 60° BEND	STD. #5 CATCH BASIN	SODDING	DUMPED ROCK	
			SEC. M-6.5(b) OR M-6.8(b) 18"	DEEP	SHALLOW	SEC. M-6.4 (h)	SEC. M-6.4 (a)	EA.		S.Y.	C.Y.	C.Y.	
1-D	230+00	240+00	LT.	600	498			2					
2-D	230+00	240+00	LT.		1022			10	1				
3-D	236+00	240+00	RT.		462		10		2				
4-D	230+00	240+00	RT.	486		575			3				
5-D	5+00"N"	6+20"N"	RT.	144					1				
6-D	237+00			154							2	107	
7-D	235+90	238+00	LT.										117
8-D	4+50"N"	5+10"N"	RT.										31
9-D	4+70"N"		LT.									12	

S STRUCTURES

REF. NO.	STATION	E-2		E-3	L-10	I-10	S-1	S-4	S-27	I-8	
		EXC. FOR STRUCT.	CHANNEL EXC.	SODDING	DUMPED ROCK CHANNEL PROTECT.	CONC. FOR STRUCT. CL. "C"	CONC. FOR STRUCT. CL. "E"	REINF. STEEL	36" PIPE FOR ROWY. SEC. M-6.4 (d) 10 GA.	48" PIPE FOR ROWY. SEC. M-6.4 (d) 8 GA.	STD. #2 M. H. (WITHOUT DROP PIPE)
		C.Y.	S.Y.	C.Y.	L.B.	L.F.	EA.				
I-S	237+00	712	6	11	23	32.7	1.92	1486	640	182	1

R ROADWAY

REF. NO.	STATION		SIDE	I-15 GUARD RAIL, STEEL BEAM STD. TYPE (DEEP)
	FROM	TO		
I-R	234+62.5	240+00	LT.	537.5



Grate Elev. Std. # 5 C.B. Sta. 237 + 00 66.5' Rt. 902.43  
 18" I-2 @ Std. # 5 C.B. Sta. 237 + 00 66.5' Rt. 899.00  
 8" I-4 @ Std. # 5 C.B. Sta. 237 + 00 66.5' Rt. 899.83  
 Grate Elev. Std. # 5 C.B. Sta. 237 + 00 66.5' Lt. 902.43  
 18" I-2 @ Std. # 5 C.B. Sta. 237 + 00 66.5' Lt. 897.70  
 8" I-4 @ Std. # 5 C.B. Sta. 237 + 00 66.5' Lt. 898.53

Excavation	65,937 C.Y.
Structure	56,488 C.Y.
Subtotal	18
Total	66,656 C.Y.