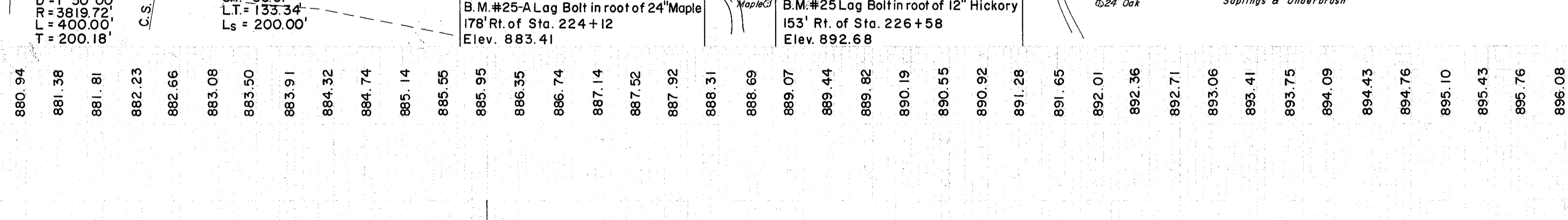
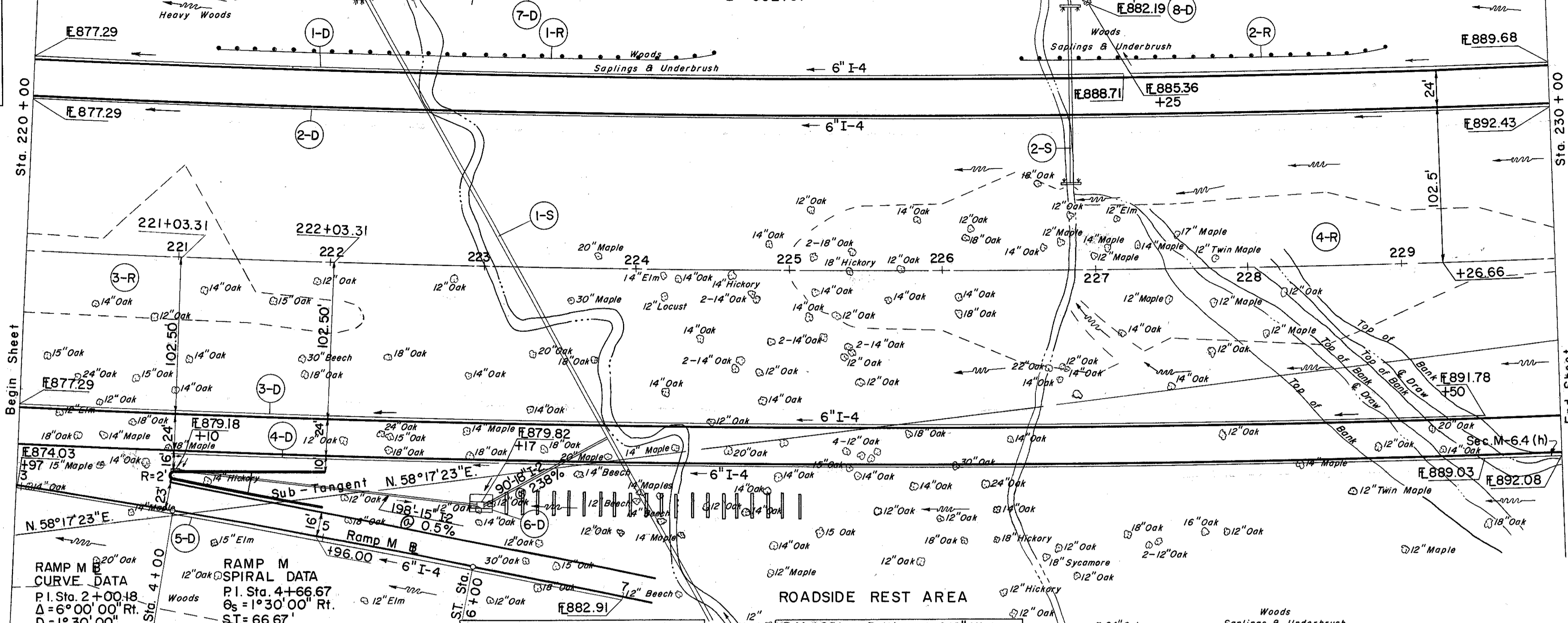


STRUCTURE NO. LAK-1-1094
FOR STRUCTURE DETAILS
SEE SHEET NO. 259

CURVE DATA
P.I. Sta. 206 + 88.93
 $\Delta = 33^\circ 09' 30''$ L.T.
 $D = 0^\circ 28' 00''$
 $R = 12277.7'$
 $L = 7105.36'$
 $T = 3655.27'$
 $E = 532.51'$

STRUCTURE NO. LAK-1-1101
FOR STRUCTURE DETAILS
SEE SHEET NO. 260

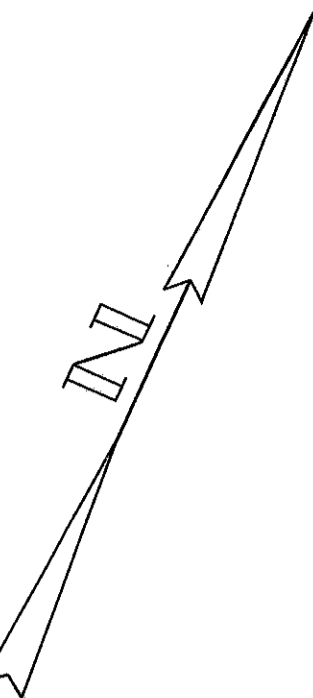
$d = 0.31'$
 $w = 6.5'$



880.94	881.38	881.81	882.23	882.66	883.08	883.50	883.91	884.32	884.74	885.14	885.55	885.95	886.35	886.74	887.14	887.52	887.92	888.31	888.69	889.07	889.44	889.82	890.19	890.55	890.92	891.28	891.65	892.01	892.36	892.71	893.06	893.41	893.75	894.09	894.43	894.76	895.10	895.43	895.76	896.08
--------	--------	--------	--------	--------	--------	--------	--------	--------	--------	--------	--------	--------	--------	--------	--------	--------	--------	--------	--------	--------	--------	--------	--------	--------	--------	--------	--------	--------	--------	--------	--------	--------	--------	--------	--------	--------	--------	--------	--------	--------

Grate Elev. Std #6 C.B. Sta. 221+04 142.5 Rt. 882.22
 #15" I-2 @ Std. #6 C.B. Sta. 221+04 142.5 Rt. 878.78
 #8" I-2 @ Std. #6 C.B. Sta. 221+04 142.5 Rt. 878.78

Grate Elev. Std. #5 C.B. Sta. 223+00 156.5 Rt. 883.34
 #15" I-2 @ Std. #5 C.B. Sta. 223+00 156.5 Rt. 877.79
 #18" I-2 @ Std. #5 C.B. Sta. 223+00 156.5 Rt. 877.54
 #8" I-4 @ Std. #5 C.B. Sta. 223+00 156.5 Rt. 878.37



REF. NO.	STATION	CLASSIFICATION	LENGTH	WIDTH	DEPTH	AREA	STRUCTURE NO.	STATION	DESCRIPTION
I-2	220+00 TO 230+00	CLASS "B" STORM SEWER UNDER PAVT.	100	18"					CLASS "B" STORM SEWER UNDER PAVT.
I-4	220+00 TO 230+00	6" PIPE UNDER DRAIN	316	6"	10	3160			6" PIPE UNDER DRAIN
I-5	220+00 TO 230+00	6" INCREASE BEND WYE	50	6"	10	500			6" INCREASE BEND WYE
I-8	220+00 TO 230+00	6" X 8" INCHES FOR CATCH BASIN		6"	10				6" X 8" INCHES FOR CATCH BASIN
I-10	220+00 TO 230+00	DUMPED ROCK FOR CHANNEL PROTECTION	10	10'	6	60			DUMPED ROCK FOR CHANNEL PROTECTION
S-27	220+00 TO 230+00	30" PIPE FOR ROWY CULVERTS	118	30"					30" PIPE FOR ROWY CULVERTS
S-29	220+00 TO 230+00	STRICT SODDING	0.3						STRICT SODDING
L-10	220+00 TO 230+00								

(S) STRUCTURES

REF. NO.	STATION	DESCRIPTION	LENGTH	WIDTH	DEPTH	AREA	STRUCTURE NO.	STATION	DESCRIPTION
E-2	220+00 TO 230+00	EXC. CHANNEL FOR STRUCT.	52	6'	7	364			EXC. CHANNEL FOR STRUCT.
E-3	220+00 TO 230+00	CHANNEL SODDING	163	6'	6	978			CHANNEL SODDING
E-5	220+00 TO 230+00	SHALLOW DEEP	7	6'	6	42			SHALLOW DEEP
I-4	220+00 TO 230+00	6" PIPE UNDER DRAIN	316	6"	10	3160			6" PIPE UNDER DRAIN
I-5	220+00 TO 230+00	6" INCREASE BEND WYE	50	6"	10	500			6" INCREASE BEND WYE
I-8	220+00 TO 230+00	6" X 8" INCHES FOR CATCH BASIN		6"	10				6" X 8" INCHES FOR CATCH BASIN
I-10	220+00 TO 230+00	DUMPED ROCK FOR CHANNEL PROTECTION	10	10'	6	60			DUMPED ROCK FOR CHANNEL PROTECTION
S-27	220+00 TO 230+00	30" PIPE FOR ROWY CULVERTS	118	30"					30" PIPE FOR ROWY CULVERTS
S-29	220+00 TO 230+00	STRICT SODDING	0.3						STRICT SODDING
L-6	220+00 TO 230+00								

(R) ROADWAY

REF. NO.	STATION	DESCRIPTION	LENGTH	WIDTH	DEPTH	AREA	STRUCTURE NO.	STATION	DESCRIPTION
I-15	220+00 TO 230+00	GUARD RAIL STEEL BEAM TYPE	118	42"					GUARD RAIL STEEL BEAM TYPE
L-6	220+00 TO 230+00	CLEAN UP UNITS	3.25						CLEAN UP UNITS
I-R	221+25 TO 221+50		25						
2-R	226+53 TO 228+92.5		23.5						
3-R	220+00 TO 223+00		11						
4-R	225+00 TO 230+00		41						
TOTAL			562.5						

27,891 C.Y.
29,936 C.Y.
35,324 C.Y.