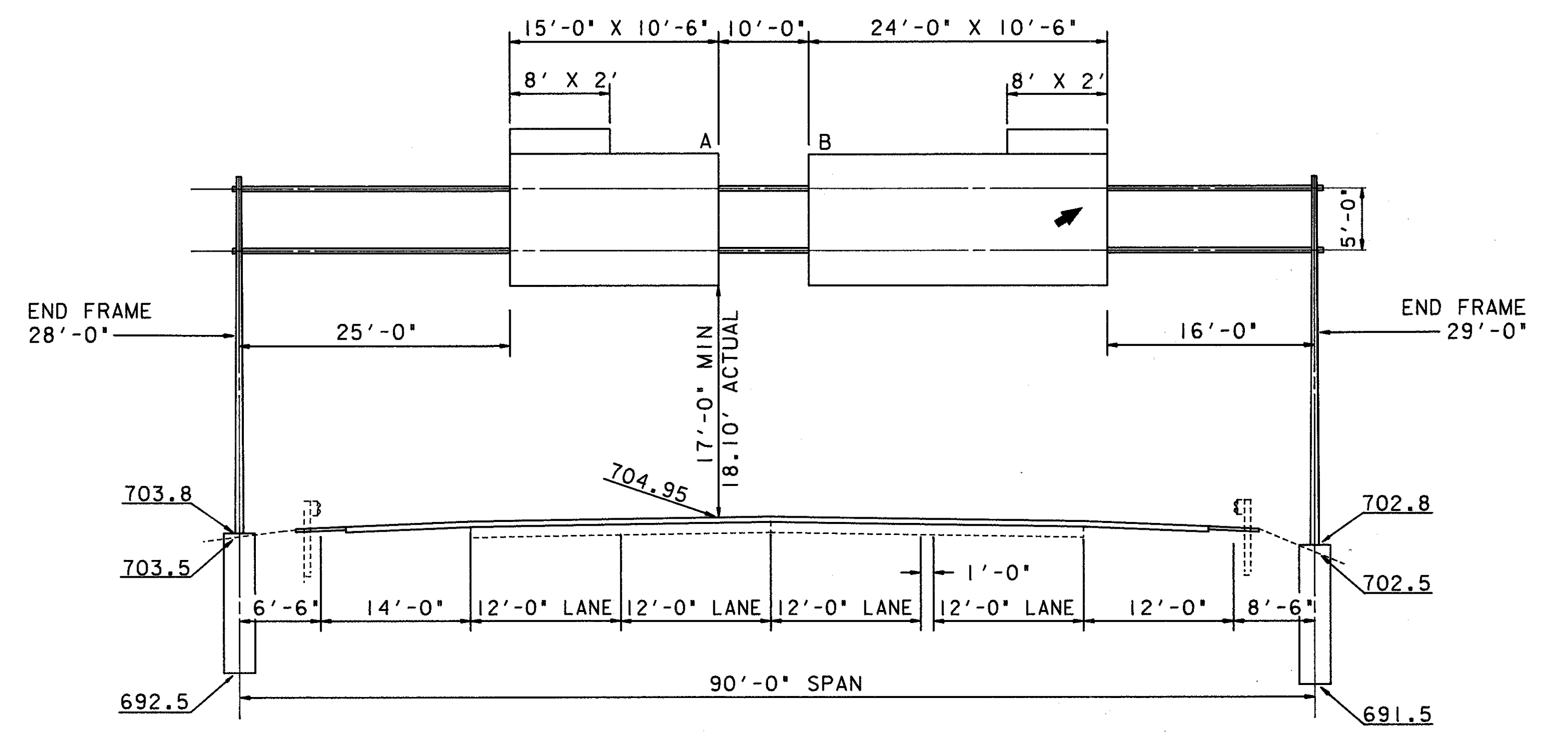
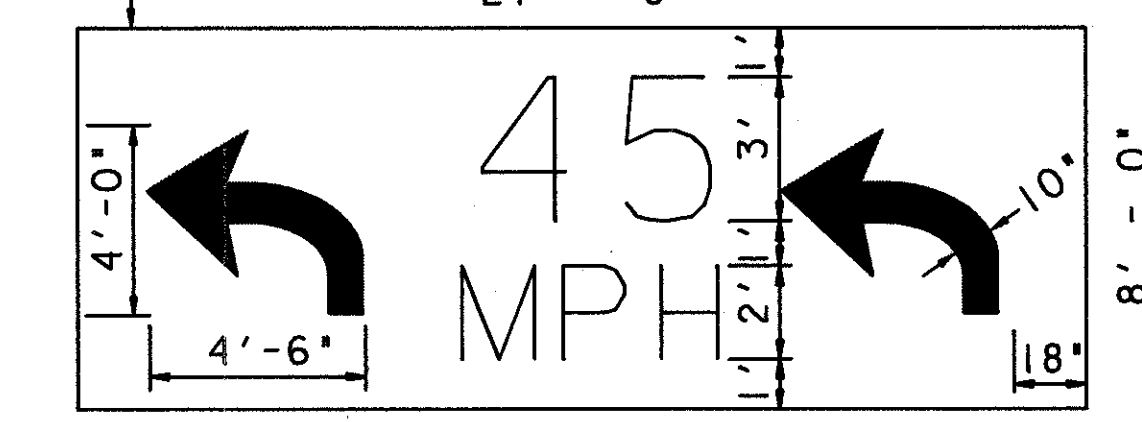
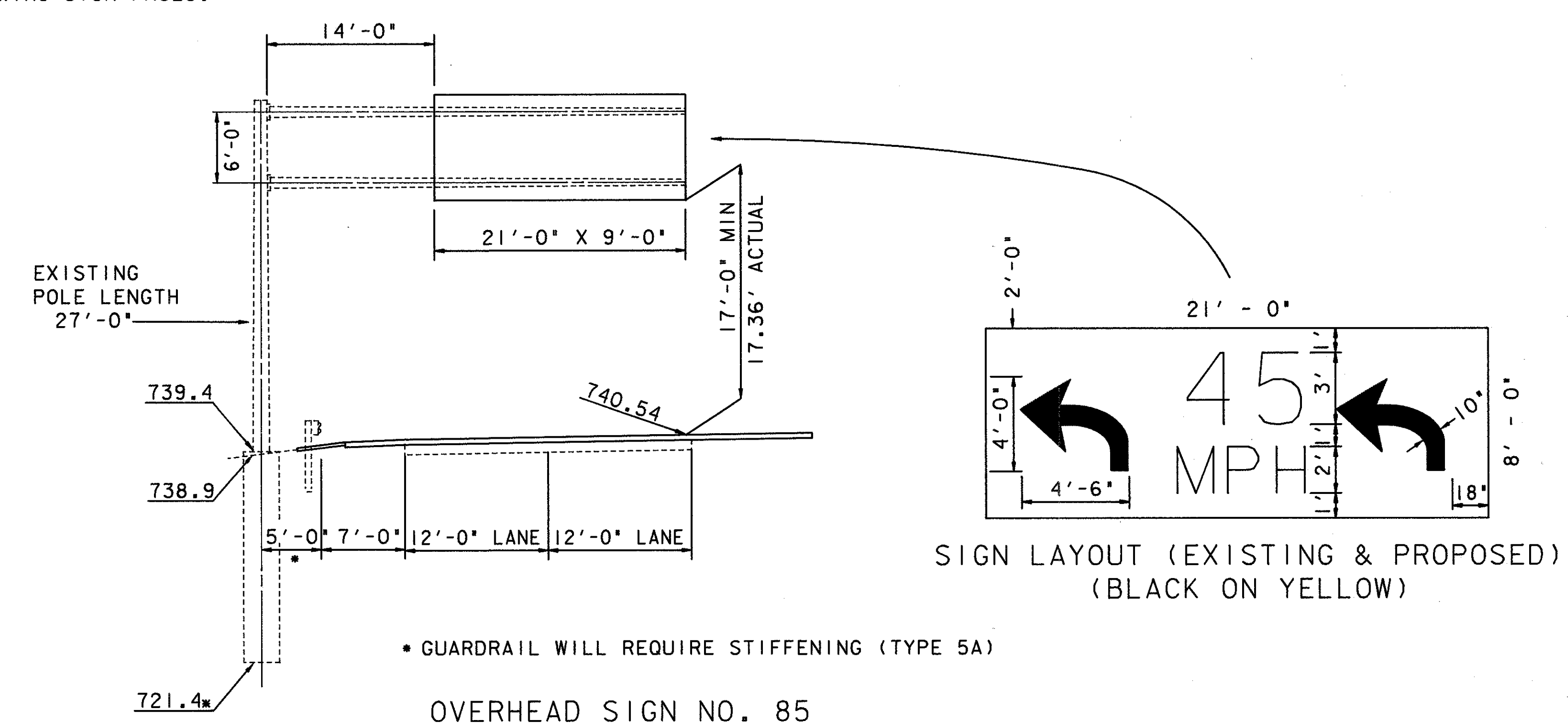


OVERHEAD SIGN NO. 70
 STA. 123 + 35 WB, I-90
 TYPE 7.65, DESIGN NO. 8
 77'-0" SPAN



OVERHEAD SIGN NO. 75
 STA. 145 + 55 WB, I-90
 TYPE 7.65, DESIGN NO. 8
 90'-0" SPAN

NOTE: ELEVATION VIEWS ARE NOT TO SCALE
 NOTE: PAVEMENT ELEVATIONS SHOWN INCLUDE RESURFACING.
 NOTE: ALL SIGN SUPPORT ELEVATIONS ARE SHOWN IN DIRECTION OF VIEWING SIGN FACES.



SIGN LAYOUT (EXISTING & PROPOSED)
 (BLACK ON YELLOW)

* GUARDRAIL WILL REQUIRE STIFFENING (TYPE 5A)

OVERHEAD SIGN NO. 85
 STA. 35 + 00 (RAMP B), EUCLID SPUR
 TYPE 12.30, DESIGN NO. 10 (MOD)
 35'-0" ARMS

PLOT SUBMITTED: 01-OCT-1992 09:22

filename.dgn

PLOTTED BY: BANASZAK
 PLOTTED FROM: c:\dgn\pid5772\5772ted.dgn