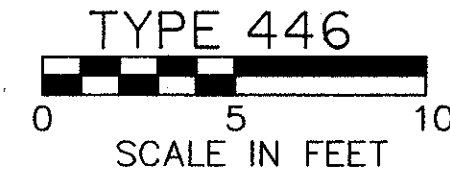
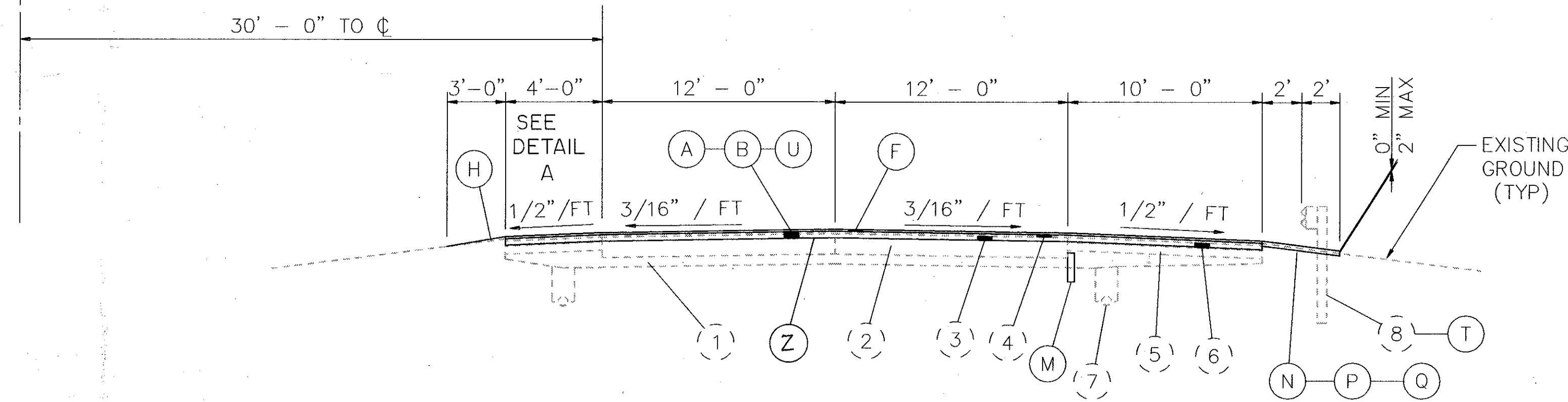


TYPICAL SECTIONS

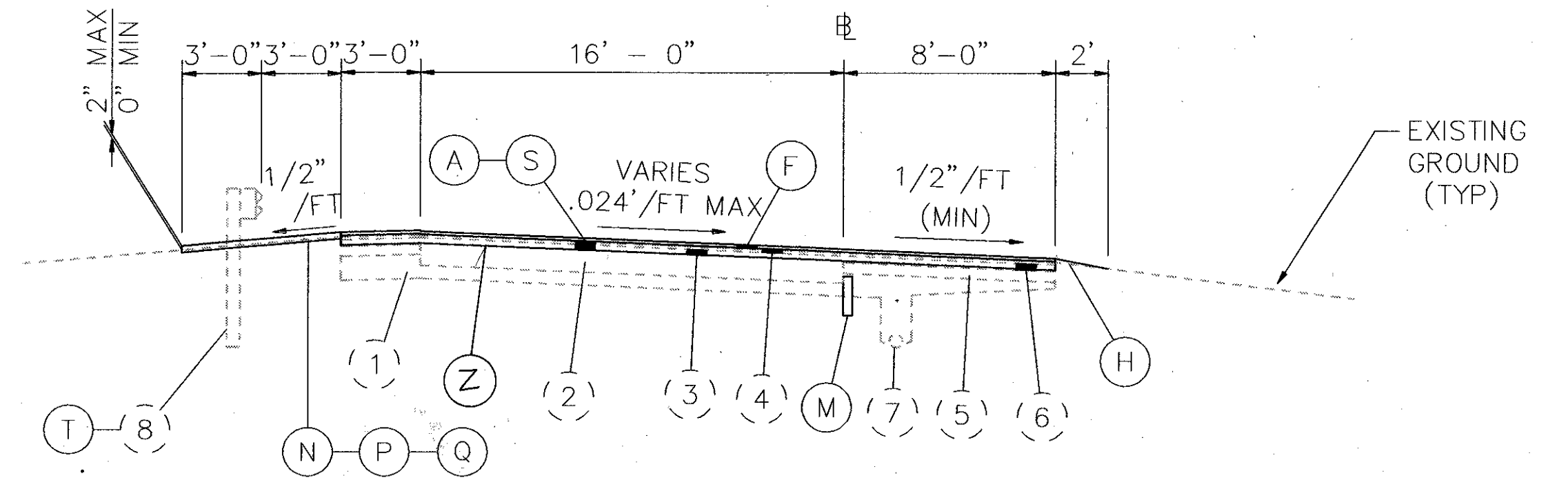


☉ CONSTRUCTION
☉ SURVEY



TYPICAL 2 LANE SECTION

I-90
STA. 29 + 60.00 TO STA. 35 + 79.29 EAST BOUND



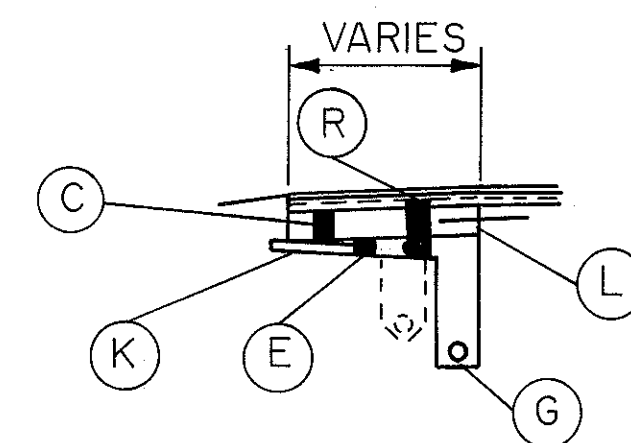
TYPICAL 1 LANE RAMP SECTION

RAMP "E"
STA. 4 + 63.97 TO STA. 10 + 13.97
STA. 15 + 70.50 TO STA. 20 + 71.96

RAMP "G"
STA. 3 + 69.70 TO STA. 11 + 43.98

RAMP "H"
STA. 13 + 69.70 TO STA. 28 + 49.60

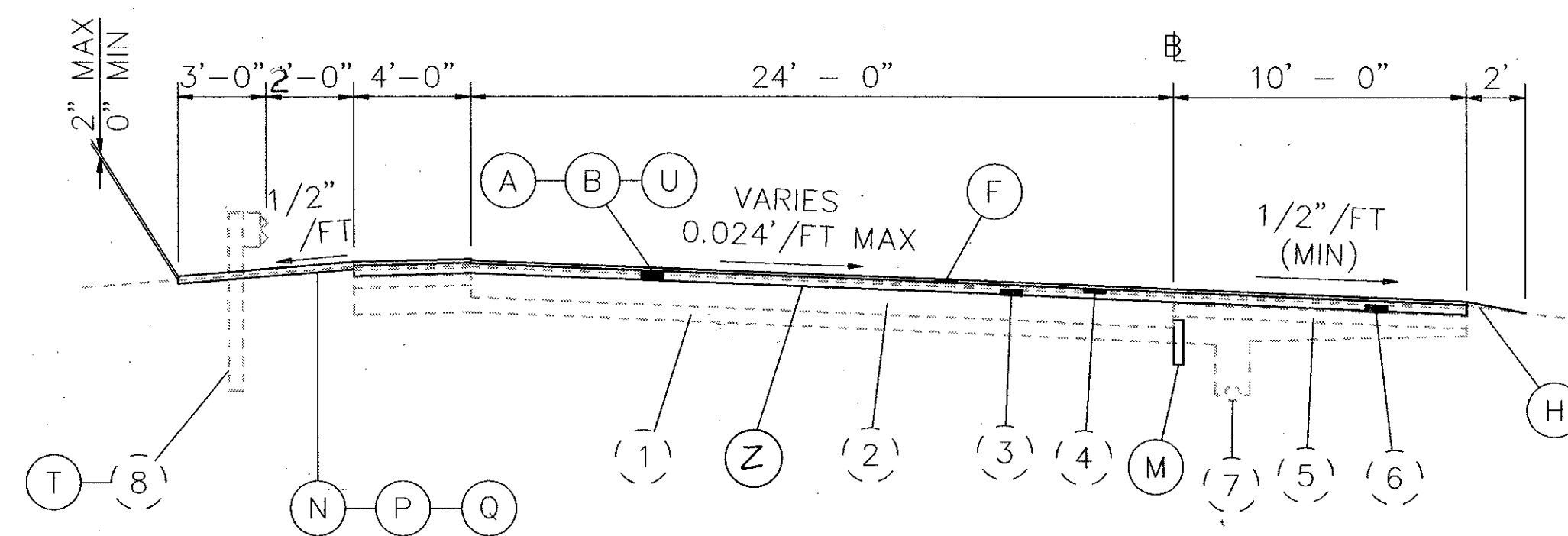
RAMP "F"
STA. 4 + 74.39 TO STA. 22 + 16.66



DETAIL A

VARIES 6'-0" TO 4'-0" STA. 29+60 TO STA. 30+80 I-90, EB

VARIES 6'-8" TO 4'-0" STA. 11+31.64 TO STA. 12+43.64 RAMP C



TYPICAL 2 LANE RAMP SECTION

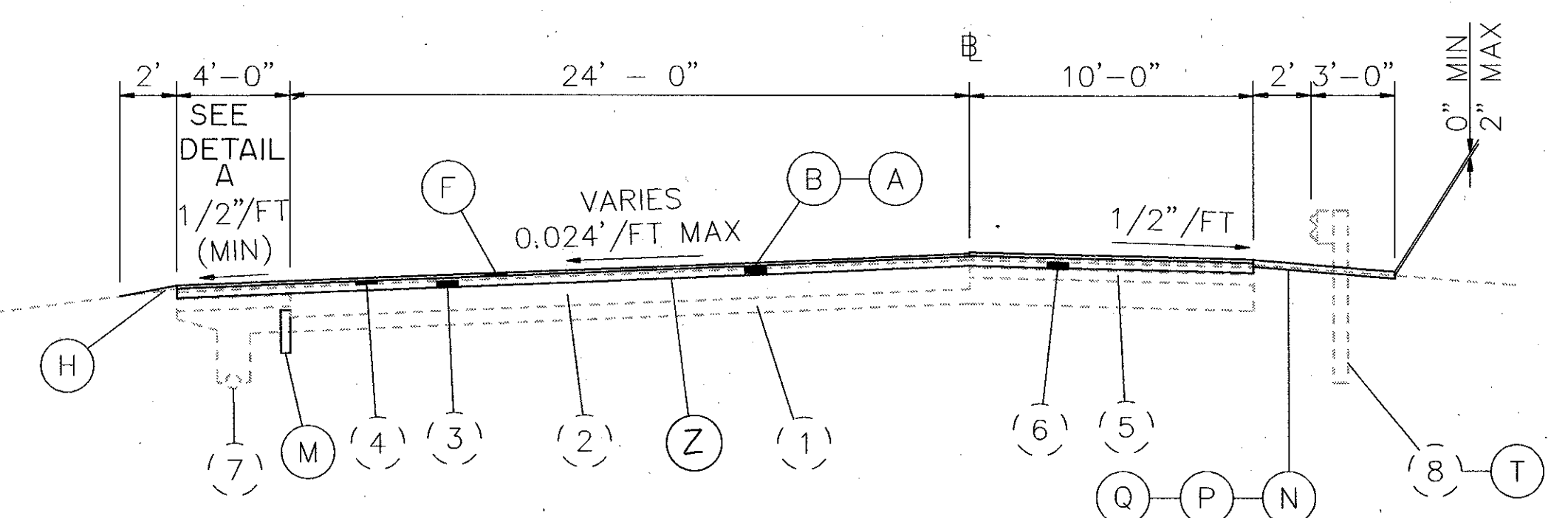
RAMP "A"
STA. 6 + 25.28 TO STA. 25 + 46.12

RAMP "B"
STA. 21 + 50 TO STA. 26 + 85.12

RAMP "C"
STA. 36 + 50 TO STA. 42 + 28.41

RAMP "D"
STA. 18 + 13.64 TO STA. 38 + 78.80

EXISTING GROUND (TYP)



TYPICAL 2 LANE RAMP SECTION

RAMP "B"
STA. 5 + 79.29 TO STA. 21 + 50

RAMP "C"
STA. 11 + 31.64 TO STA. 36 + 50

NOTE:
TYPICAL SECTIONS ARE INTENDED TO SHOW GENERAL ROADWAY AND PAVEMENT FEATURES ONLY; FOR DETAIL, SEE PLAN SHEET.

FOR LEGEND, SEE SHEET NO. 4