

**NOTES:**

THE PREFIX "S" SHALL BE ADDED TO ALL REINFORCING BAR MARKS IN THE SUPERSTRUCTURE, UNLESS NOTED OTHERWISE.

MINIMUM BAR LAP SPLICES:  
 NO. 4 BAR = 23"  
 NO. 5 BAR = 29"  
 NO. 6 BAR = 35"

FOR DECK SCREED ELEVATION TABLE, SEE SHEET 11/13

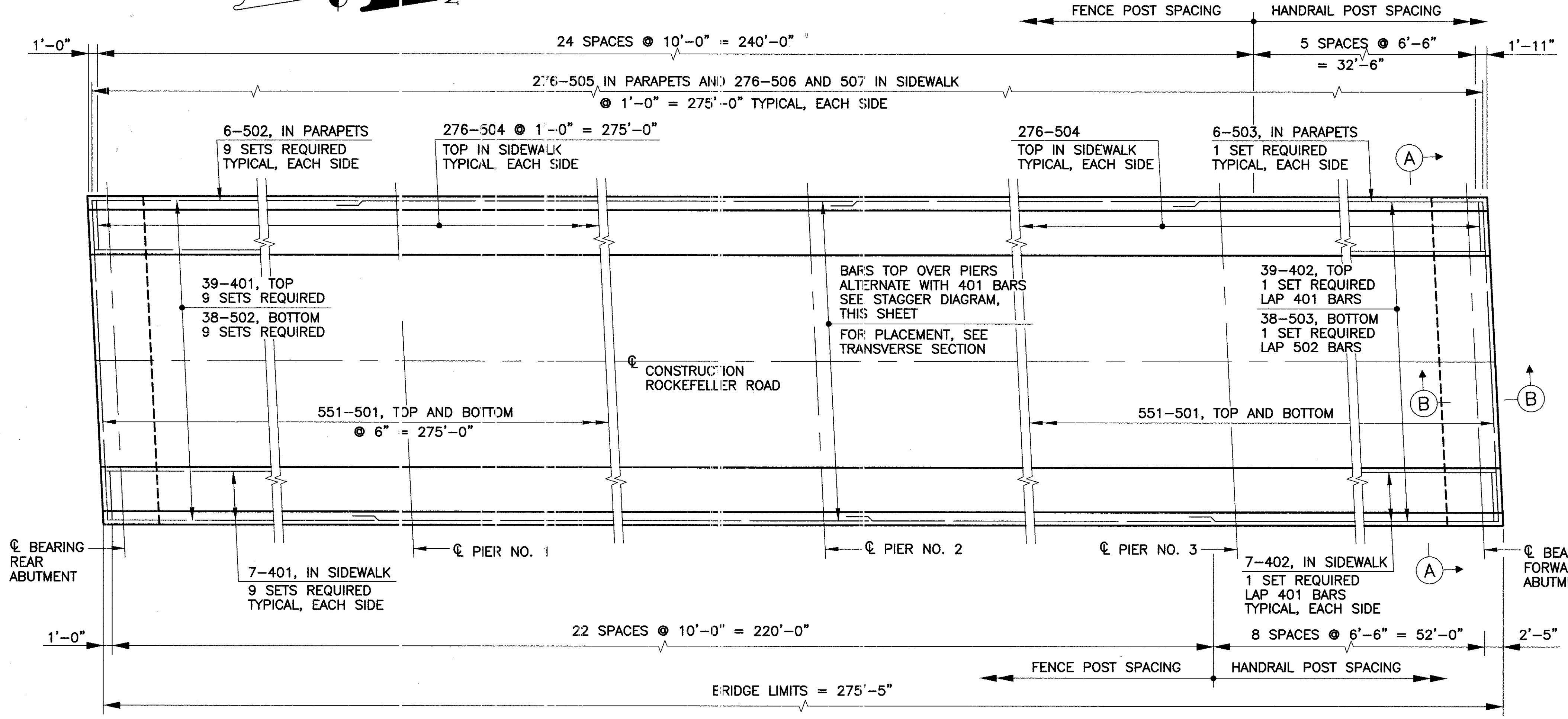
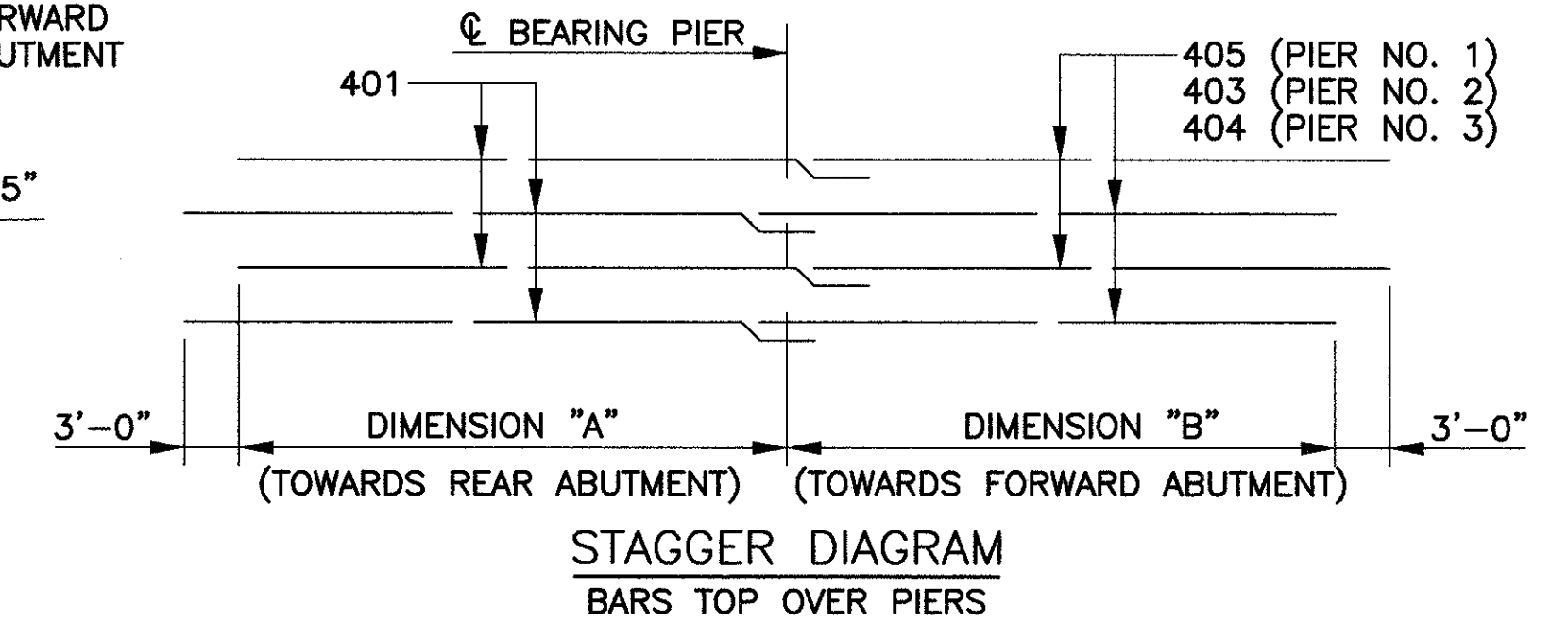
SEE STRUCTURE GENERAL NOTES FOR DETAILS RELATED TO PARAPET SAWCUT CONTROL JOINTS. CONTROL JOINTS SHALL NOT BE CONSTRUCTED CLOSER THAN 1'-2" FROM THE CENTER OF A FENCE OR HANDRAIL POST.

VERTICAL PARAPET REINFORCING STEEL SHALL CLEAR THE CONTROL JOINTS BY 3" MINIMUM. CLEARANCE SHALL BE OBTAINED BY FIELD ADJUSTMENT OF THE CONTROL JOINT LOCATION OR REINFORCING STEEL SPACING.

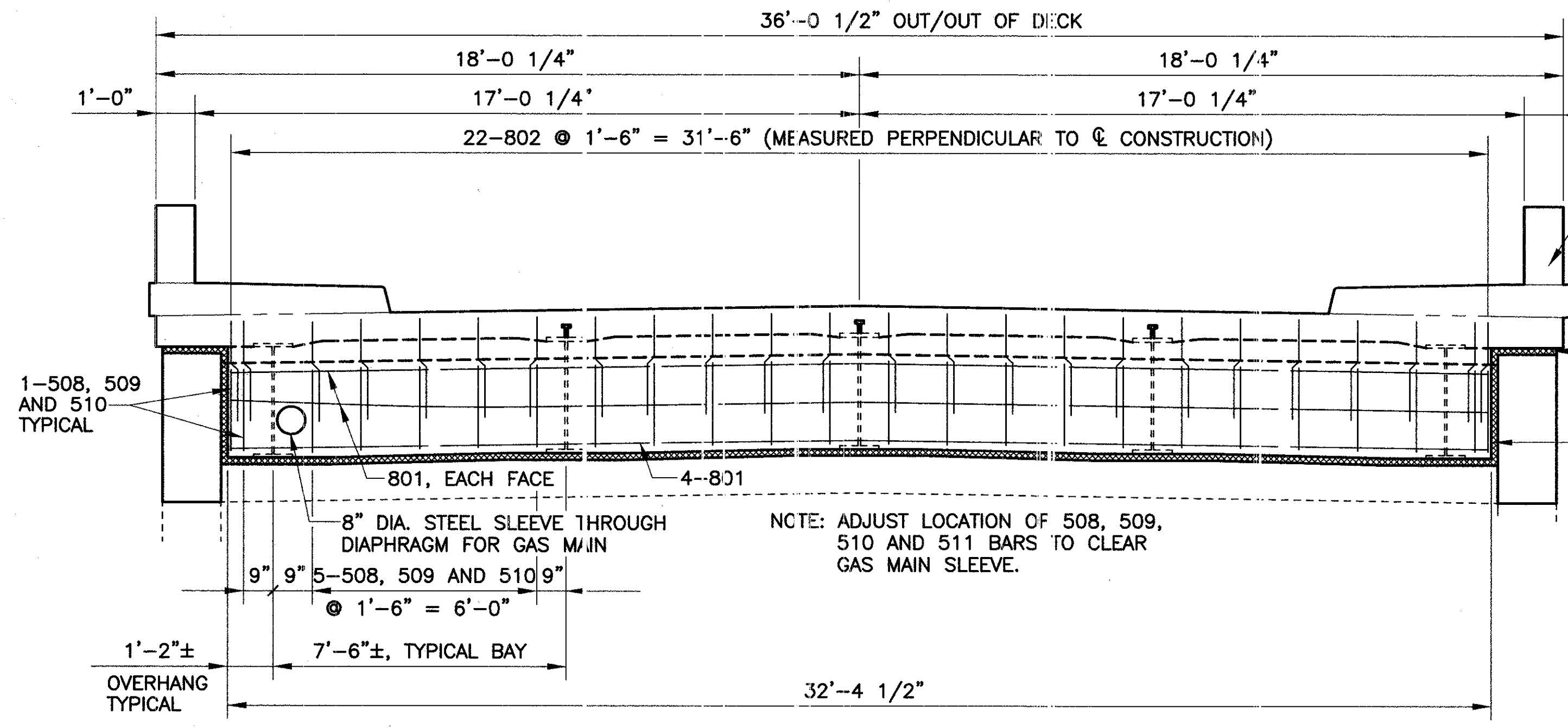
2" EXPANDED POLYSTYRENE FILLER TO BE INCLUDED WITH ITEM 844, HIGH PERFORMANCE CONCRETE FOR PAYMENT.

FOR HAND RAIL DETAIL, SEE SHEET 10/13

| DIMENSION TABLE<br>BARS TOP OVER PIERS |         |         |
|--|---------|---------|
| LOCATION                               | DIM "A" | DIM "B" |
| PIER NO. 1                             | 22'-0"  | 22'-0"  |
| PIER NO. 2                             | 25'-0"  | 25'-0"  |
| PIER NO. 3                             | 20'-0"  | 23'-0"  |

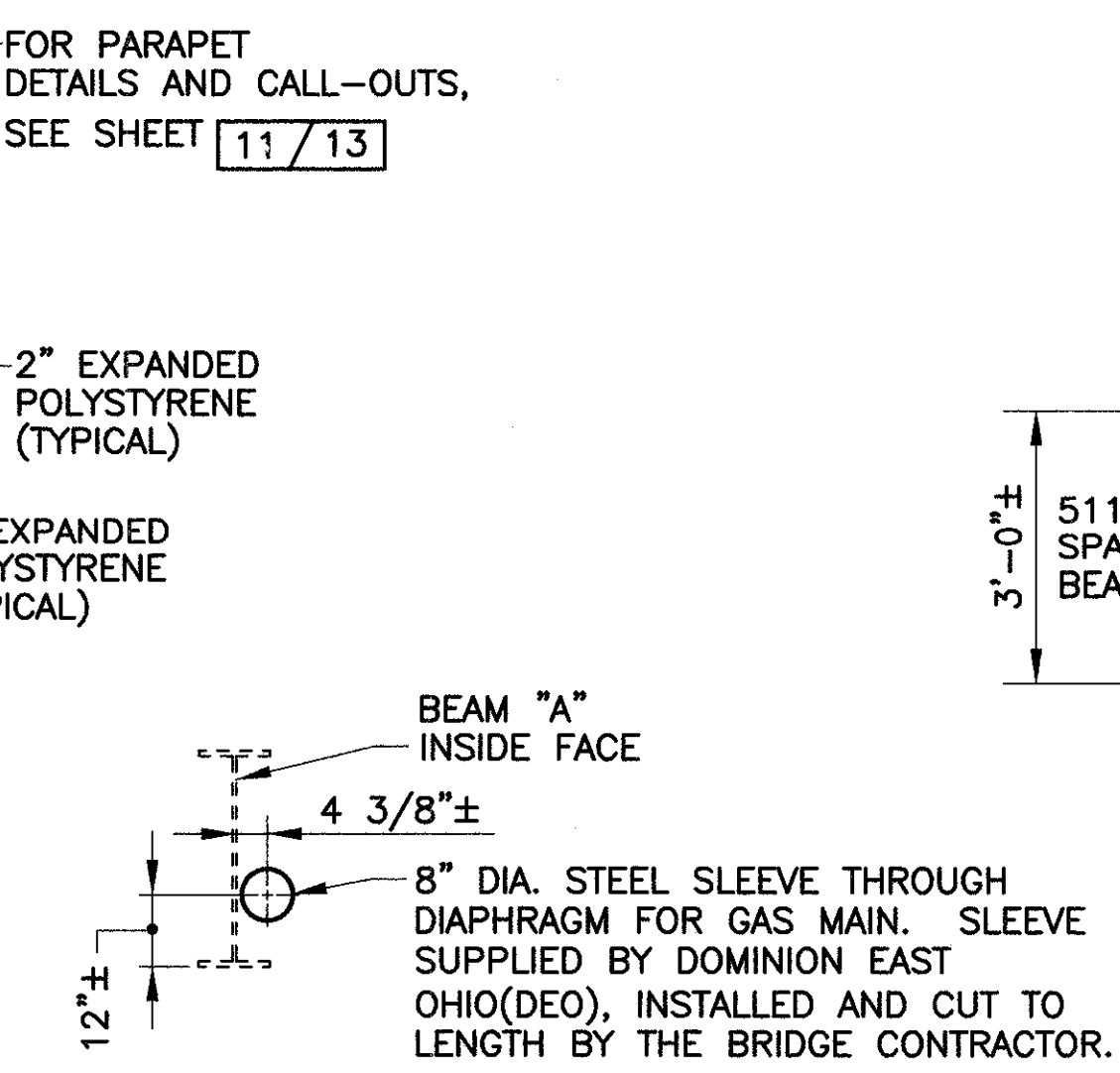


**SLAB PLAN**

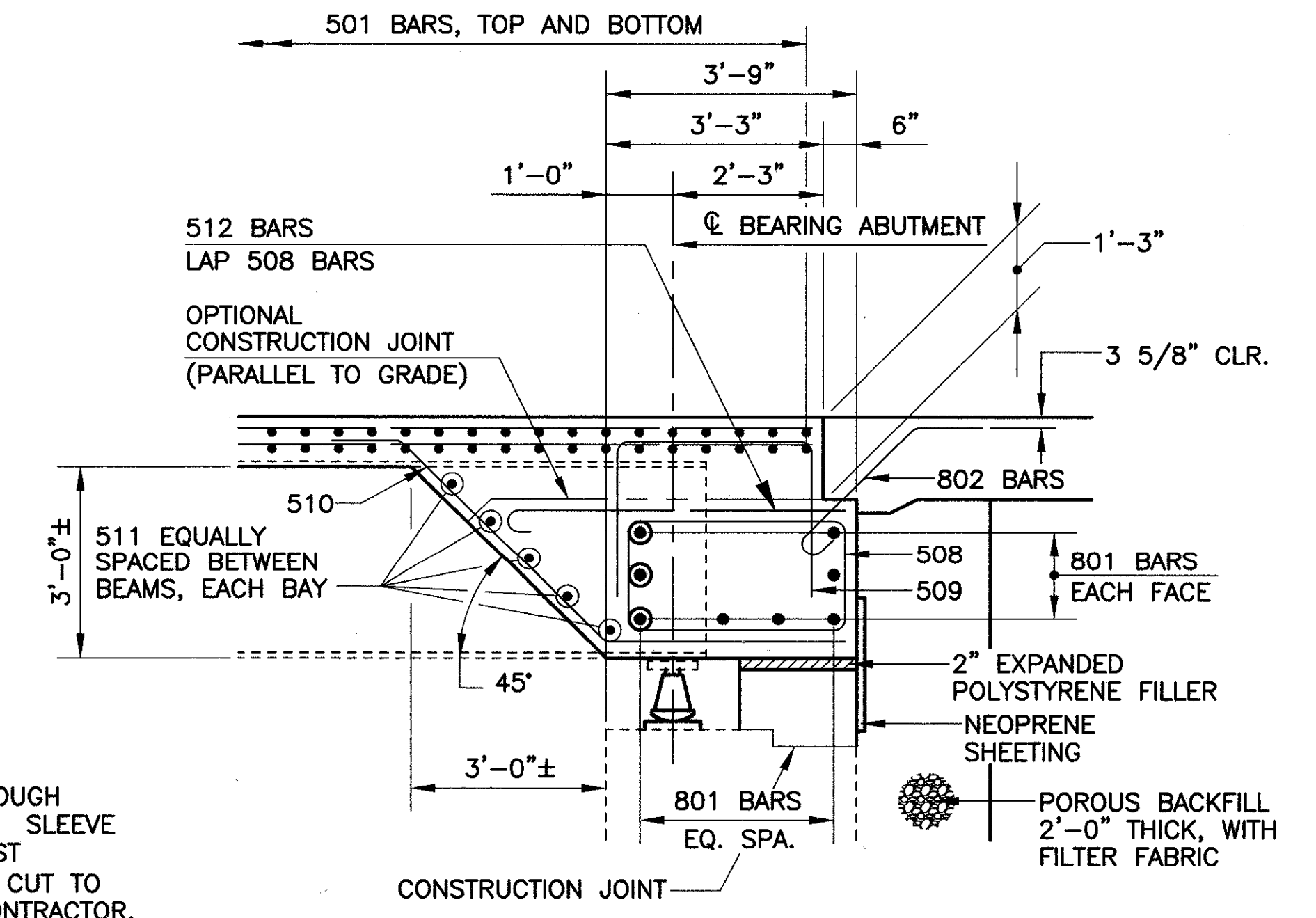


**ELEVATION A-A**

FORWARD ABUTMENT SHOWN, REAR ABUTMENT OPPOSITE HAND



**GAS SLEEVE DETAIL**



**SECTION B-B**

GAS MAIN SLEEVE NOT SHOWN

G:\201108\dwg\tracing sub shfts rev\adache-slab-plan.dwg 01/15/02 02:32:38 PM EST  
 drawing scale: 1/8" = 1'-0"  
 plot scale: 1 = 8

Michael Benza & Associates, Inc.  
 Consulting Engineers and Surveyors  
 DATE: 12/31/01  
 DRAWN: JNS  
 DESIGNED: TES  
 CHECKED: TJW  
 STRUCTURE FILE NUMBER: 4303458  
 SUPERSTRUCTURE DETAILS  
 LAK-90-0171  
 ROCKEFELLER RD. OVER I-90  
 LAK-90-1.71  
 12/13  
 28  
 29