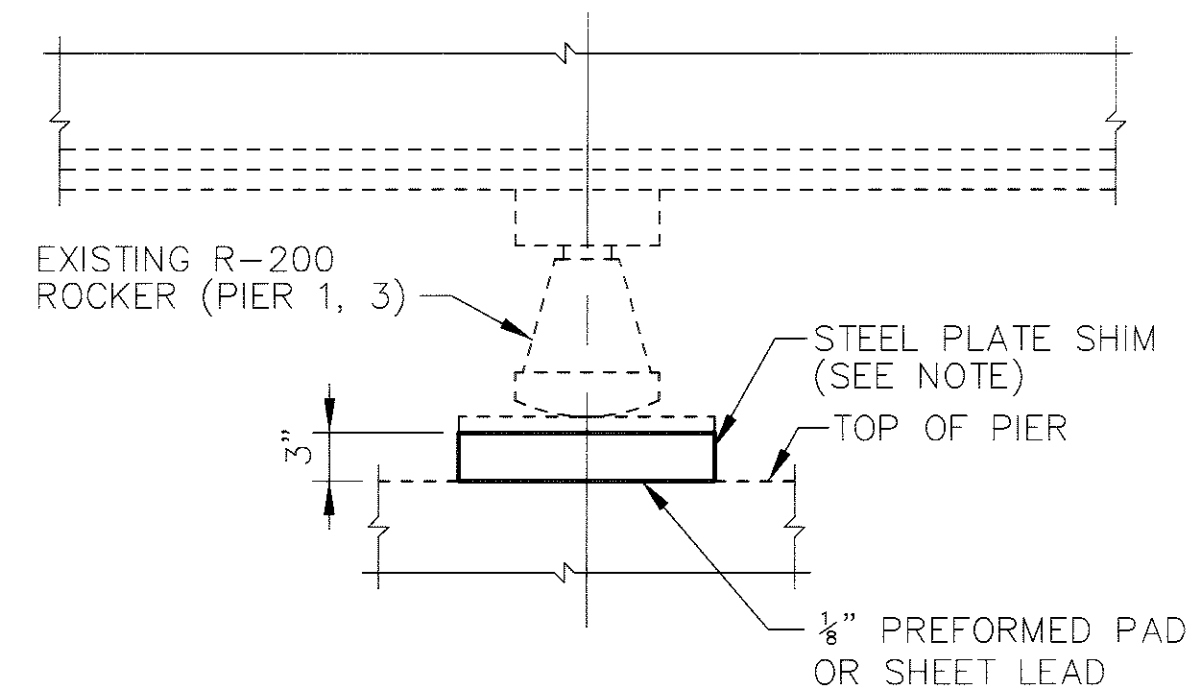


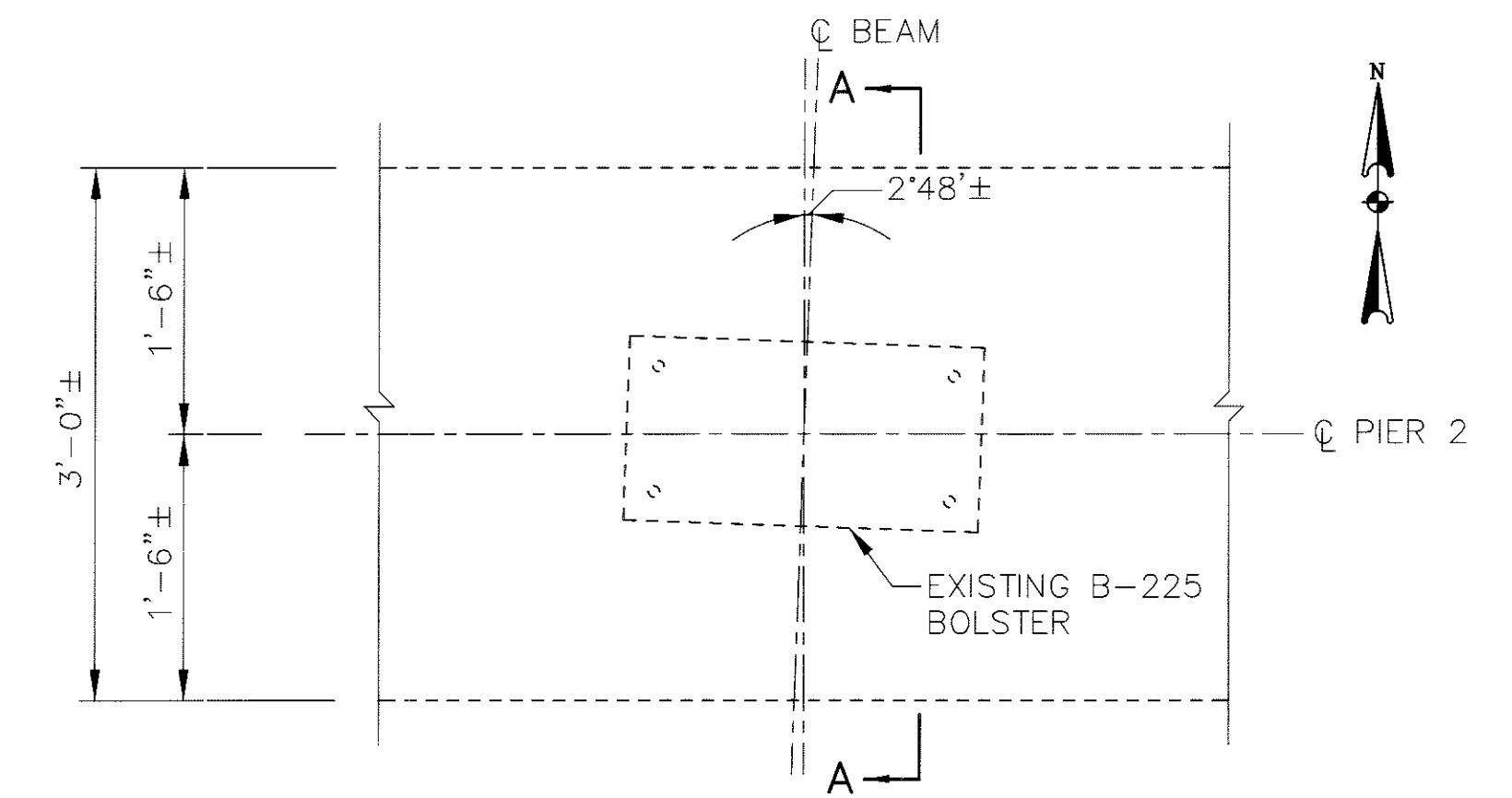
**NOTES:**  
ALL PIER ROCKER AND BOLSTER BEARINGS ARE TO BE REFURBISHED AND RESET.

STEEL PLATE SHIMS SHALL BE A-36.

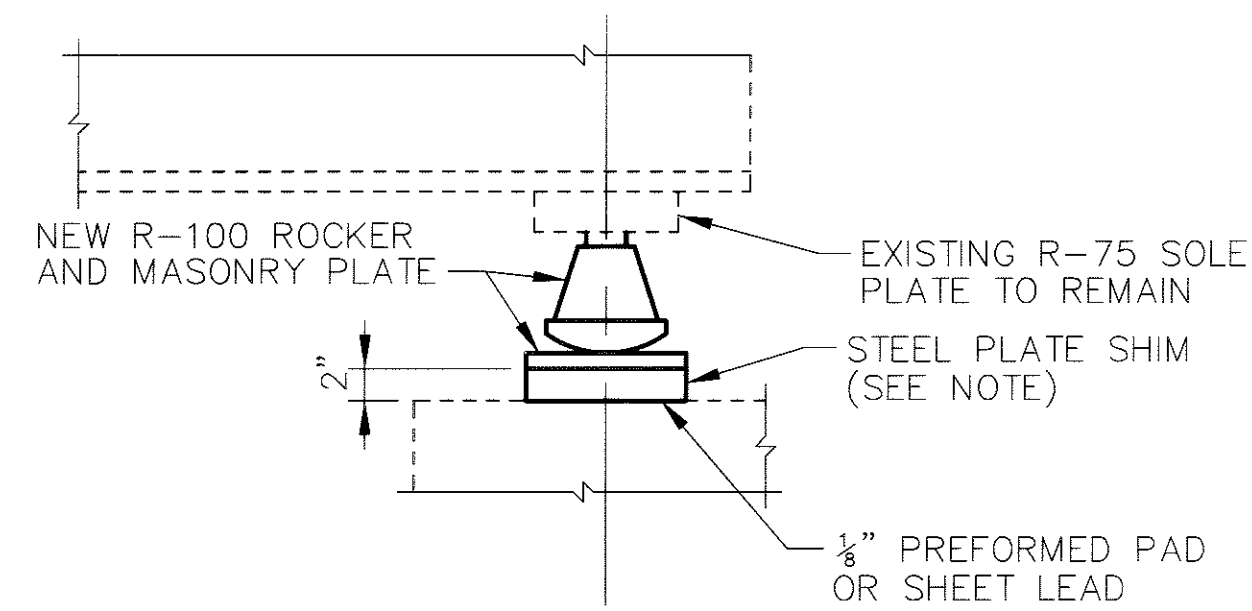


**PIER ROCKER BEARING DETAIL**

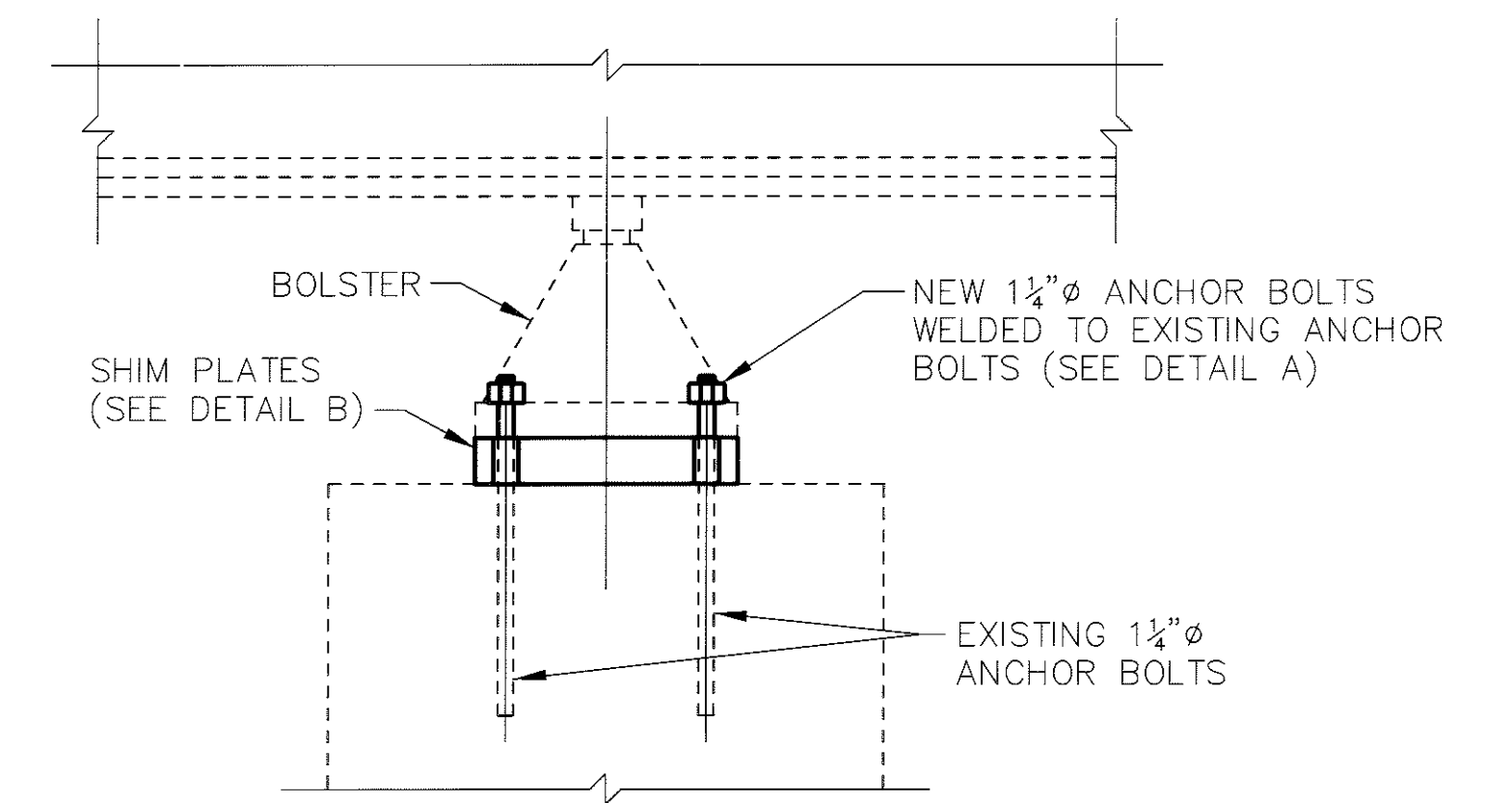
NOTE: STEEL PLATE SHIMS SHALL HAVE THE SAME BEARING AREA AS THE ROCKER MASONRY BEARING PLATE.



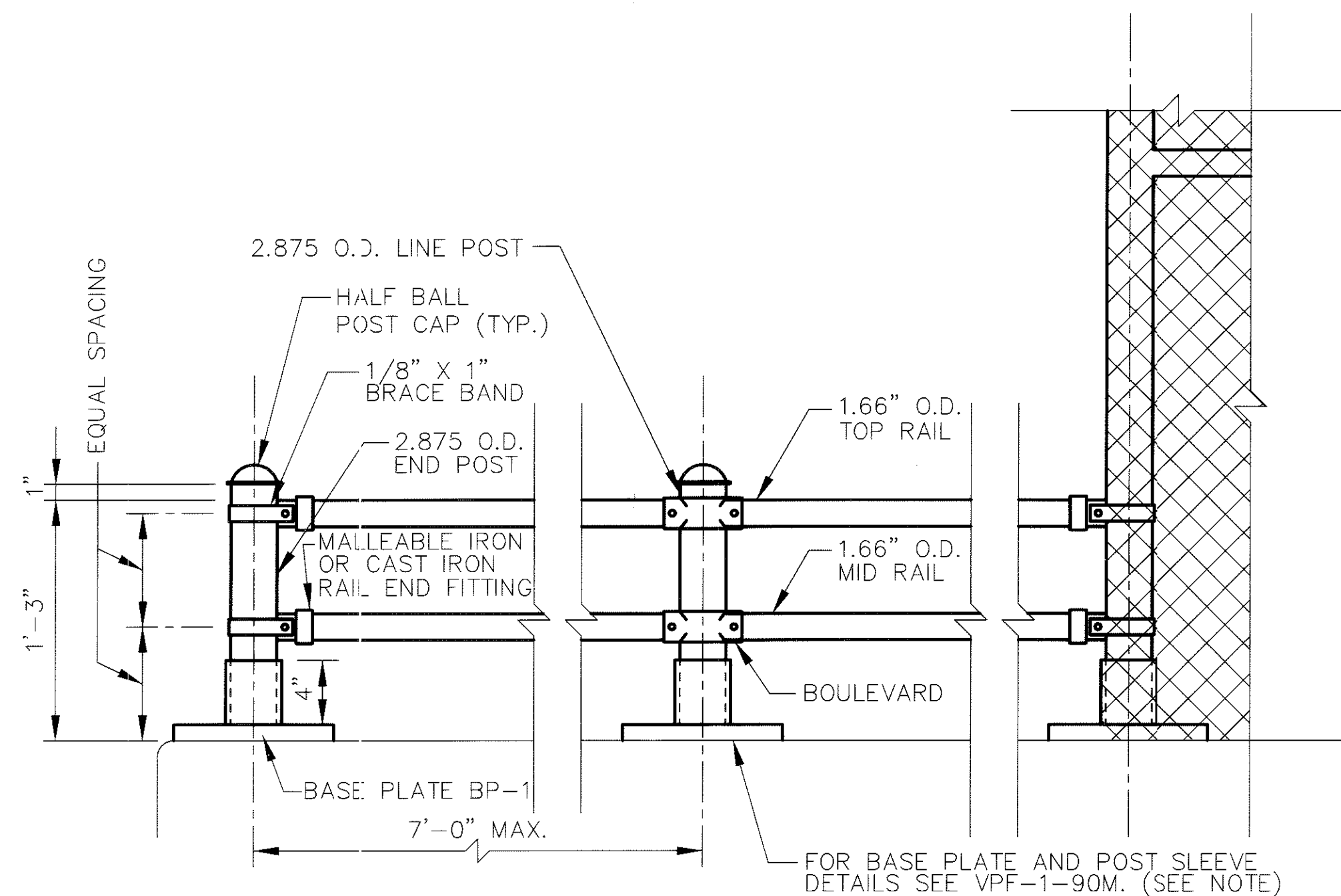
**PIER BOLSTER BEARING DETAIL**



**ABUTMENT ROCKER BEARING DETAIL**

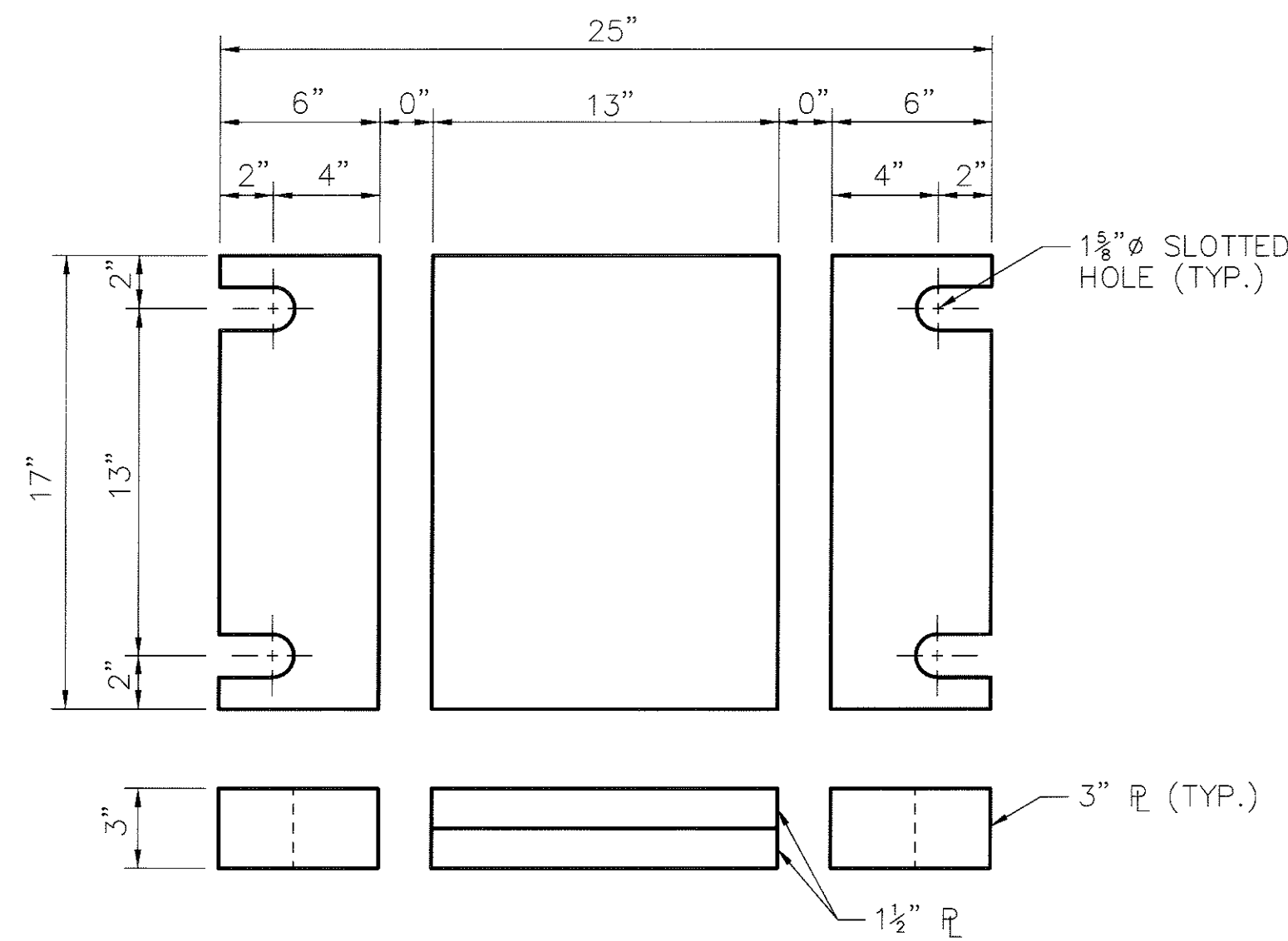


**SECTION A-A**



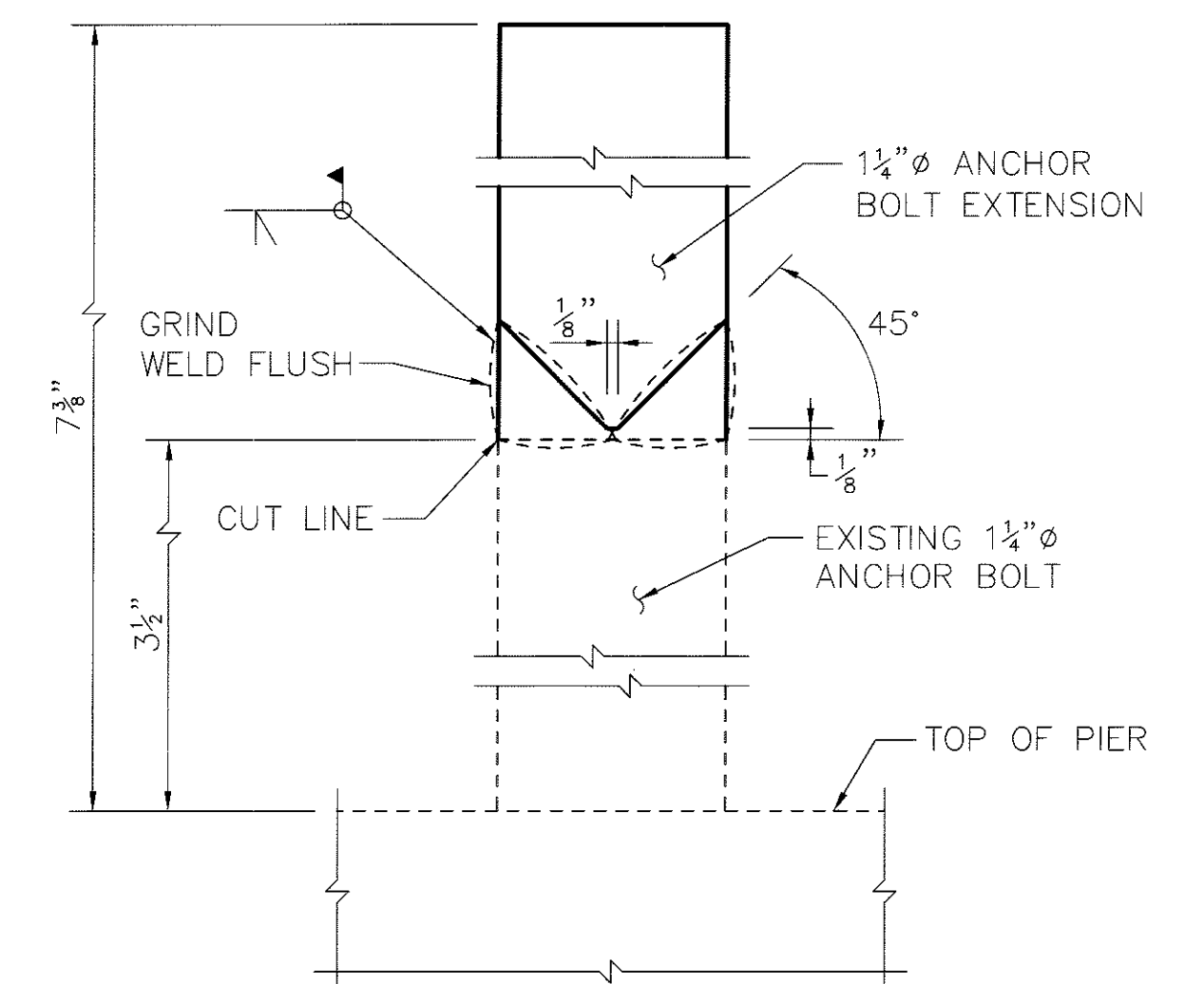
- NOTES:**
1. FOR ADDITIONAL DETAILS AND MATERIAL REQUIREMENTS SEE VPF-1-90M.
  2. POST SLEEVE SHALL BE 0'-4" HIGH IN LIEU OF THE 1'-0" HIGH SHOWN IN VPF-1-90M.
  3. SEE SHEETS 16 AND 28 OF 29 FOR POST SPACING.

**HANDRAIL DETAIL**



**STEEL PLATE SHIM DETAIL B**

(BOLSTER B-225)



**DETAIL A**

