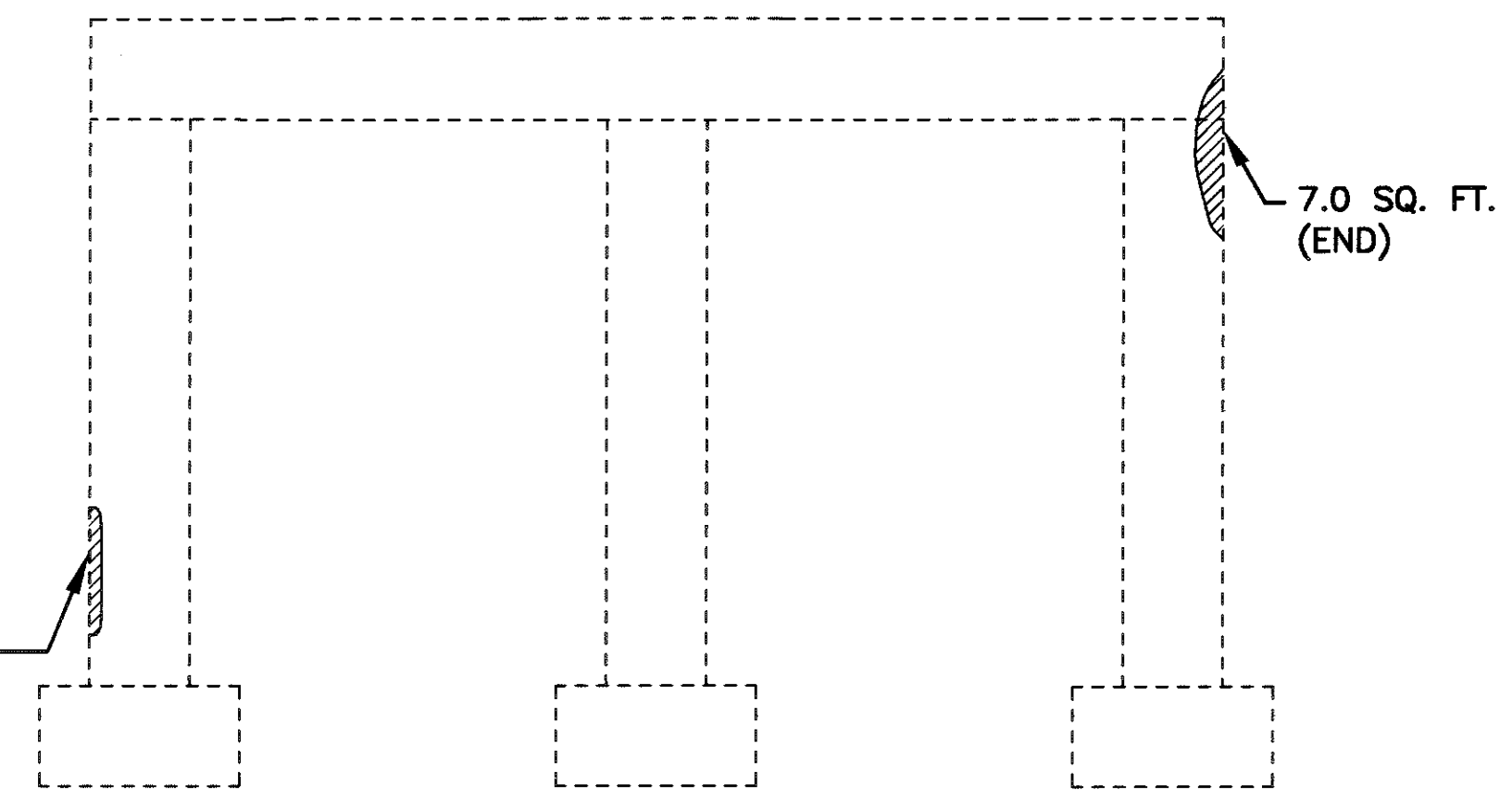
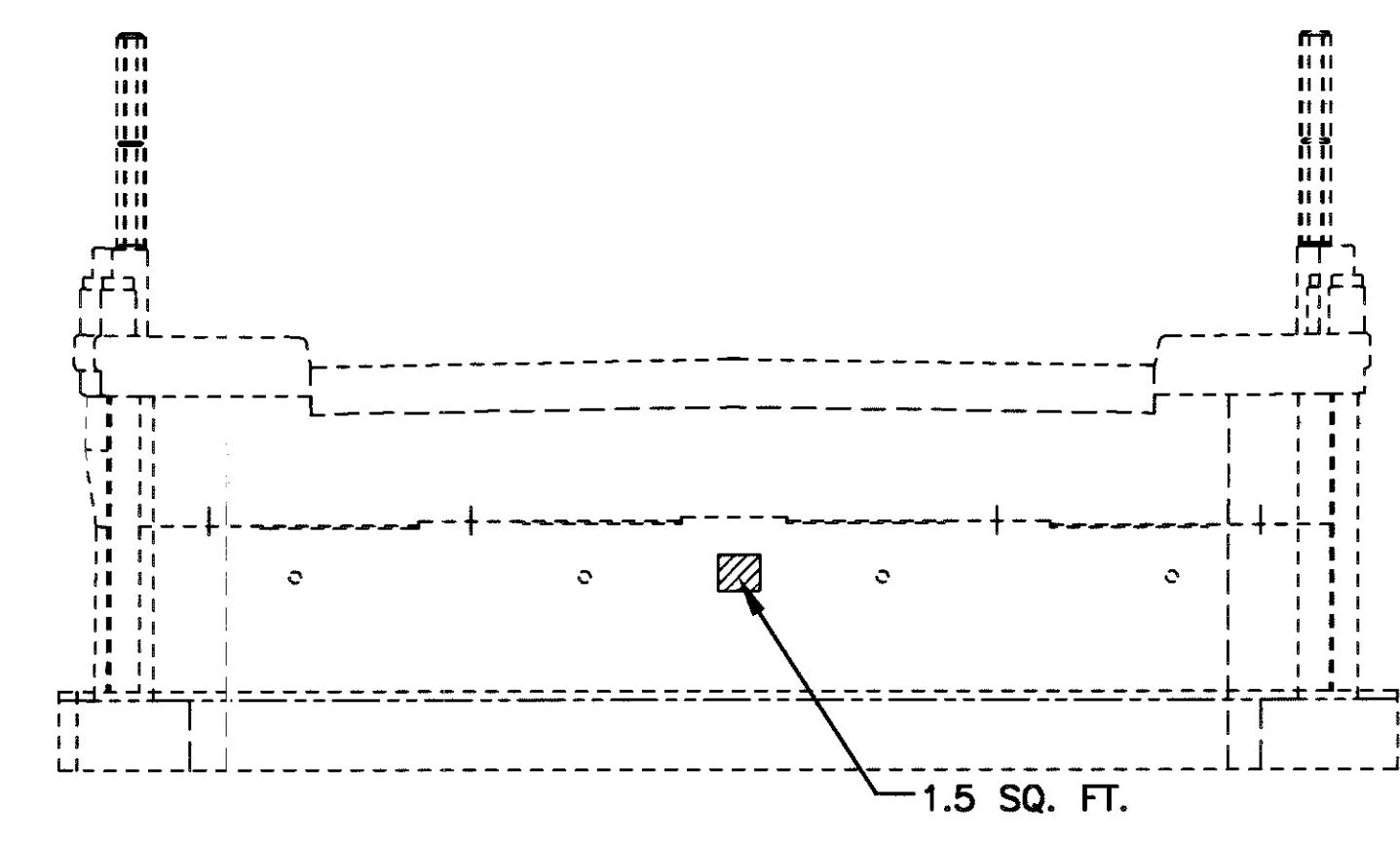


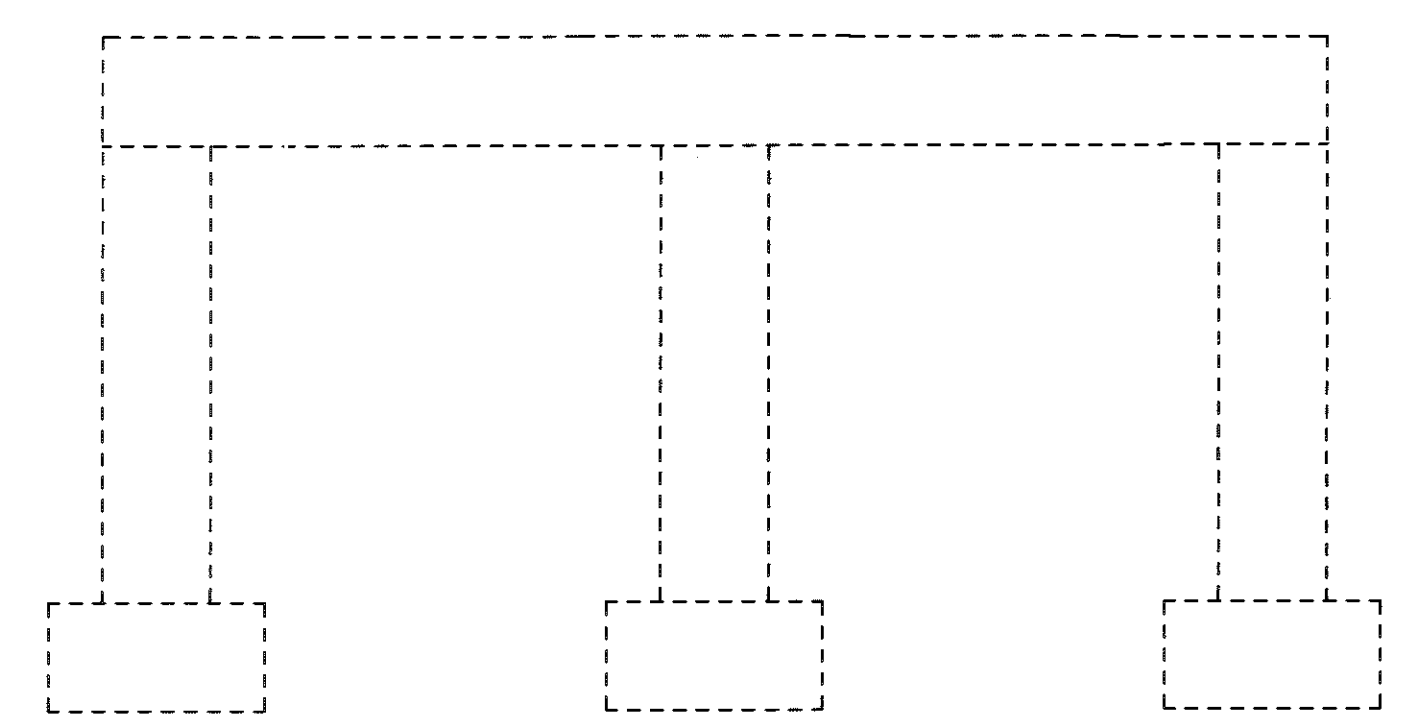
PIER 1-SOUTH FACE
PATCHING TOTAL = 16.5 SQ. FT.



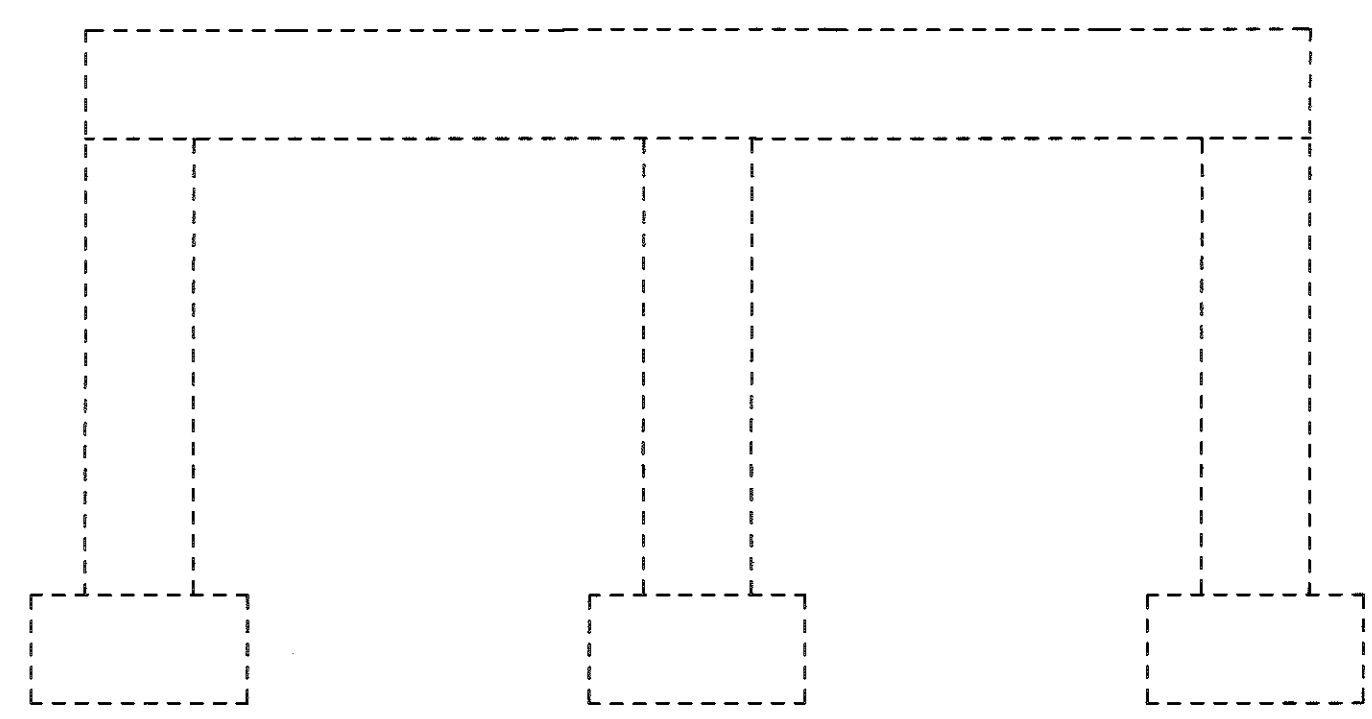
PIER 1-NORTH FACE
PATCHING TOTAL = 7.0 SQ. FT.



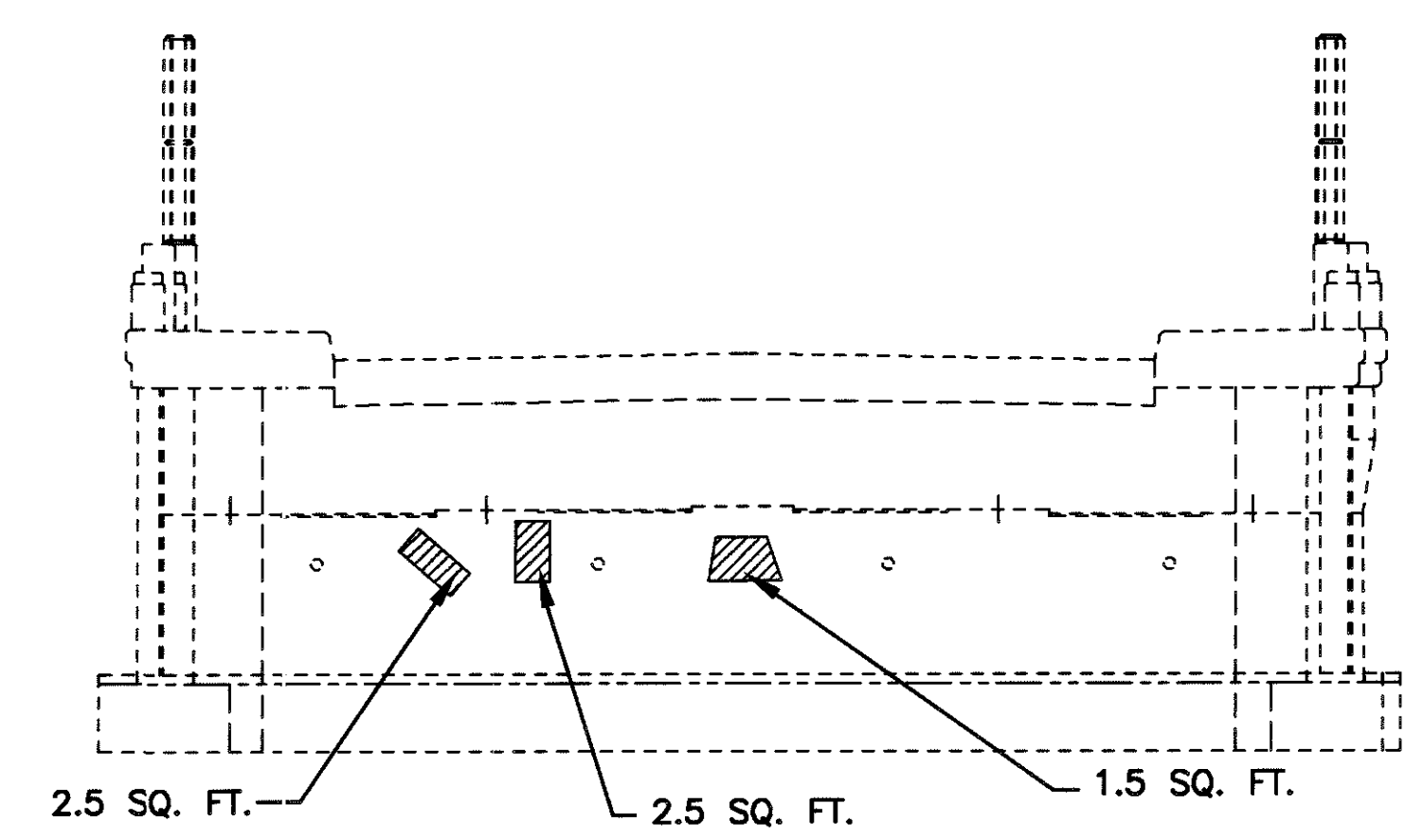
REAR (SOUTH) ABUTMENT
PATCHING TOTAL = 1.5 SQ. FT.



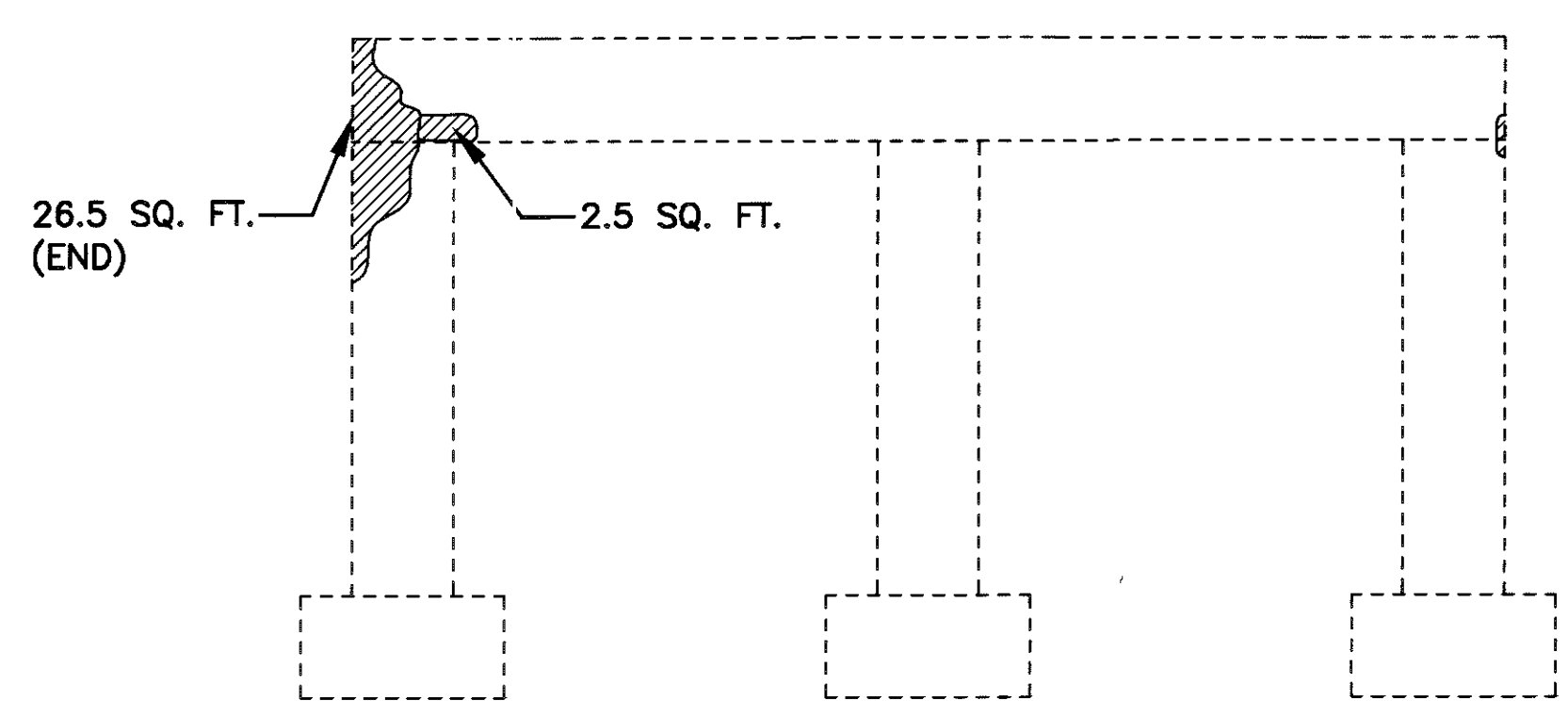
PIER 2-SOUTH FACE
PATCHING TOTAL = 0.0 SQ. FT.



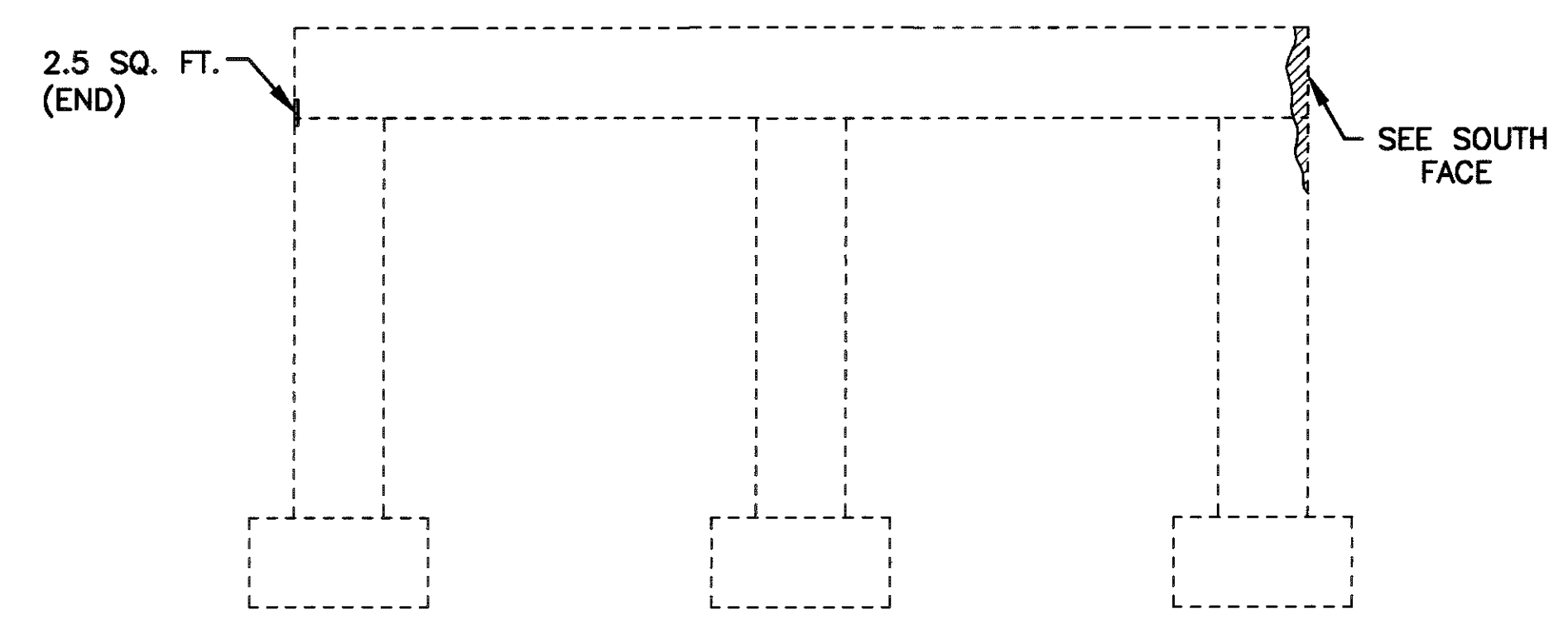
PIER 2-NORTH FACE
PATCHING TOTAL = 0.0 SQ. FT.



FORWARD (NORTH) ABUTMENT
PATCHING TOTAL = 6.5 SQ. FT.



PIER 3-SOUTH FACE
PATCHING TOTAL = 29.0 SQ. FT.



PIER 3-NORTH FACE
PATCHING TOTAL = 2.5 SQ. FT.

▨ - DENOTES AREA TO BE PATCHED. REPAIRS SHALL BE PAID FOR UNDER ITEM 519-PATCHING CONCRETE STRUCTURE OR ITEM 843-PATCHING CONCRETE STRUCTURE WITH TROWELABLE MORTAR. THE AREAS SHOWN ARE APPROXIMATE, FINAL DETERMINATION OF THE AREA TO BE REPAIRED WILL BE MADE BY THE ENGINEER AT TIME OF CONSTRUCTION.

PATCHING TOTAL SUMMARY

LOCATION	
REAR ABUTMENT	1.5 SQ. FT.
PIER 1	23.5 SQ. FT.
PIER 2	0.0 SQ. FT.
PIER 3	31.5 SQ. FT.
FORWARD ABUTMENT	6.5 SQ. FT.
TOTAL	63.0 SQ. FT.

THE FOLLOWING ESTIMATED QUANTITIES HAVE BEEN CARRIED TO SHEET 4/13 FOR USE AS DIRECTED BY THE ENGINEER:

519, PATCHING CONCRETE STRUCTURES 47 SQ. FT.
843, PATCHING CONCRETE STRUCTURES WITH TROWELABLE MORTAR 16 SQ. FT.