

TBM
 IP. MON. BOX @
 ROCKEFELLER DRIVE AND
 MILLER AVENUE
 STA. 14+77.44
 ELEV. 831.67

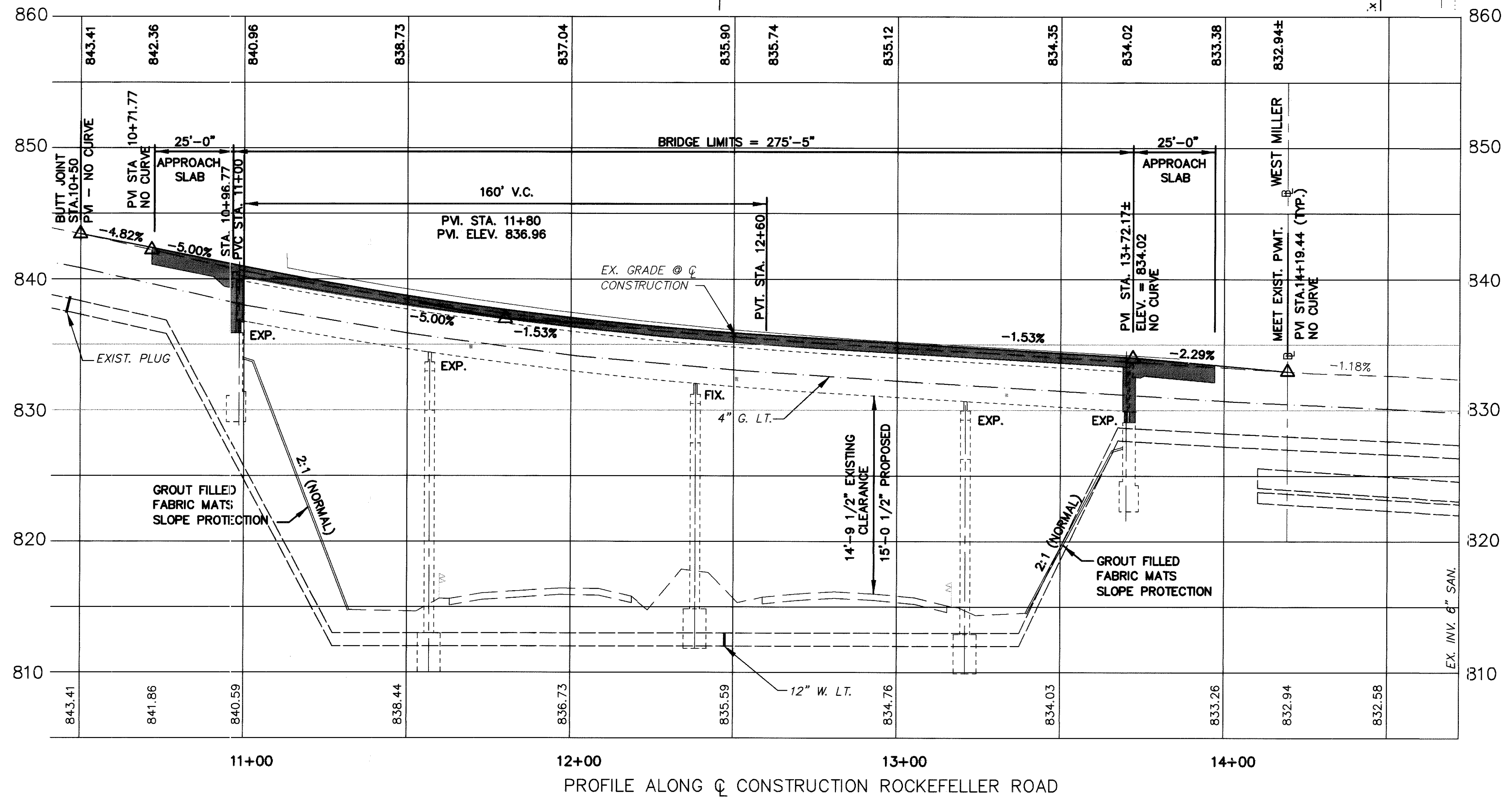
TBM
 "M" MATHEWS
 HYD. @ STA. 9+86.72 ± (LT.)
 ELEV. 833.61

TBM
 "M" MATHEWS
 HYD. IN FRONT
 HOUSE # 2762 ROCKEFELLER
 DRIVE
 ELEV. 833.10

TBM
 INVERT SANITARY MANHOLE
 STA. 14+83.60
 ELEV. 821.84

NOTES:

- EARTHWORK LIMITS SHOWN ARE APPROXIMATE. ACTUAL SLOPES SHALL CONFORM TO PLAN CROSS-SECTIONS.



| TRAFFIC DATA | |
|--------------------|--------|
| CURRENT ADT (2003) | = 4120 |
| DESIGN ADT (2023) | = 4630 |
| DESIGN ADTT (2023) | = 186 |

| EXISTING STRUCTURE | |
|--------------------|---|
| TYPE: | CONTINUOUS STEEL BEAMS WITH REINFORCED CONCRETE DECK AND SUBSTRUCTURE |
| SPANS: | 57'-6"±, 82'-0"±, 82'-0"±, 49'-6"± |
| C/C BEARINGS: | |
| ROADWAY: | 24'-0"± F/F CURB PLUS 2'-4"-8" SIDEWALKS |
| LOADING: | C.F. = 130 (57) |
| ALIGNMENT: | TANGENT |
| SKIEW: | 2' 48" R.F.± (PLAN) |
| | 3' 10" R.F.± (OBSERVED AT ABUT. BACKWALLS) |
| WEARING SURFACE: | 3/4" MONOLITHIC CONCRETE AND 1 1/4"± CONCRETE OVERLAY |
| APPROACH SLAB: | 25' ± (AS-1-54 MODIFIED) |
| STRUCTURE FILE NO. | 4303458 |

| PROPOSED STRUCTURE | |
|-------------------------|---|
| PROPOSED WORK: | NEW COMPOSITE REINFORCED CONCRETE DECK |
| TYPE: | CONTINUOUS COMPOSITE INTERIOR STEEL BEAMS, CONTINUOUS NON-COMPOSITE EXTERIOR STEEL BEAMS, WITH REINFORCED CONCRETE DECK, SEMI-INTEGRAL WITH EXISTING CONCRETE ABUTMENTS AND CONCRETE PIERS. |
| SPANS: | 57'-6"±, 82'-0"±, 82'-0"±, 49'-6"± |
| C/C BEARINGS: | |
| ROADWAY: | 24'-0" F/F CURB PLUS 2'-5"-0" SIDEWALKS |
| LOADING: | SUBSTRUCTURE: HS 20-44 (CASE II) AND THE ALTERNATE MILITARY LOADING |
| | STRUCTURE: C.F.=130 (57) |
| ALIGNMENT: | TANGENT |
| SKIEW: | 3' 10" R.F. |
| WEARING SURFACE: | 1" MONOLITHIC CONCRETE |
| FUTURE WEARING SURFACE: | NO PROVISION |
| APPROACH SLAB: | 25' LONG (AS-1-81) |
| CROWN: | 3/16" / FT. |
| LATITUDE : | N 41° 35' 30" |
| LONGITUDE : | W 81° 27' 30" |

Michael Benza & Associates Inc.
 Consulting Engineers and Surveyors
 DATE: 12/31/01
 STRUCTURE FILE NUMBER: 4303458
 DRAWN: TEN 2
 CHECKED: TJW
 LAKE COUNTY
 STA. 10+96.67 TO
 STA. 13+72.17
 SITE PLAN
 LAK - 90 - 0171
 ROCKEFELLER RD. OVER I-90
 LAK - 90 - 1.71
 1 / 13
 17 / 29