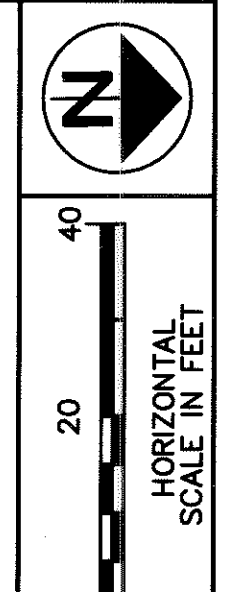


TITLE: 1102/CURRENT/PLANSET/PLAN-PROF-1
 PLOT: 1=1
 DATE: 1/11/02



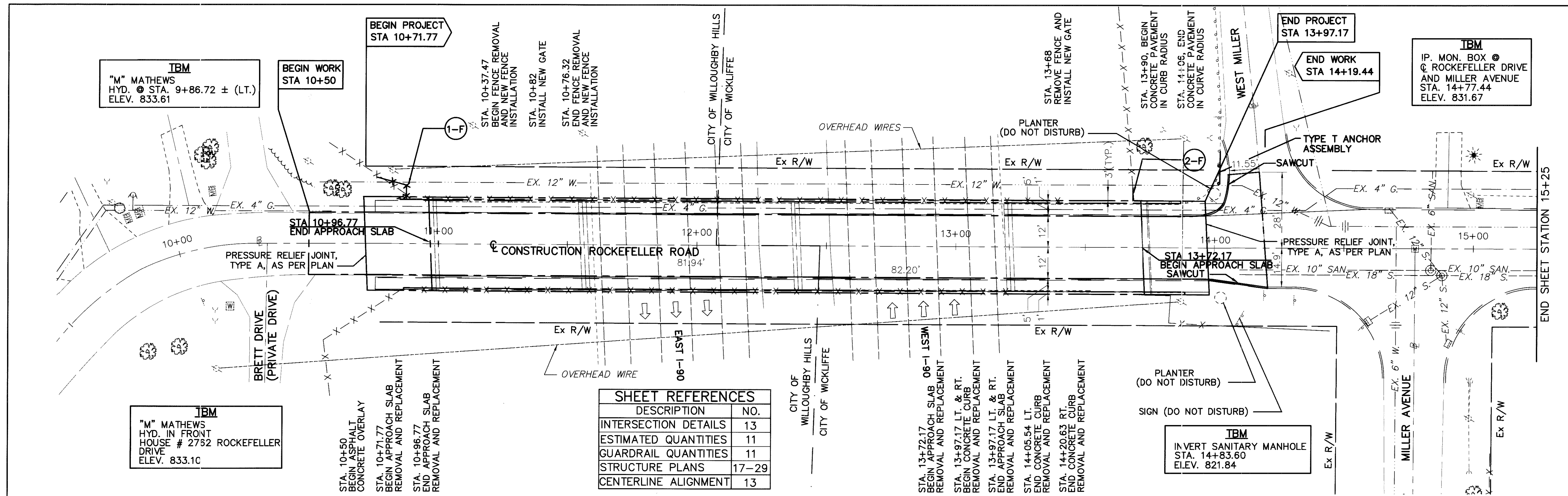
CALCULATED
KAM

CHECKED
TEN

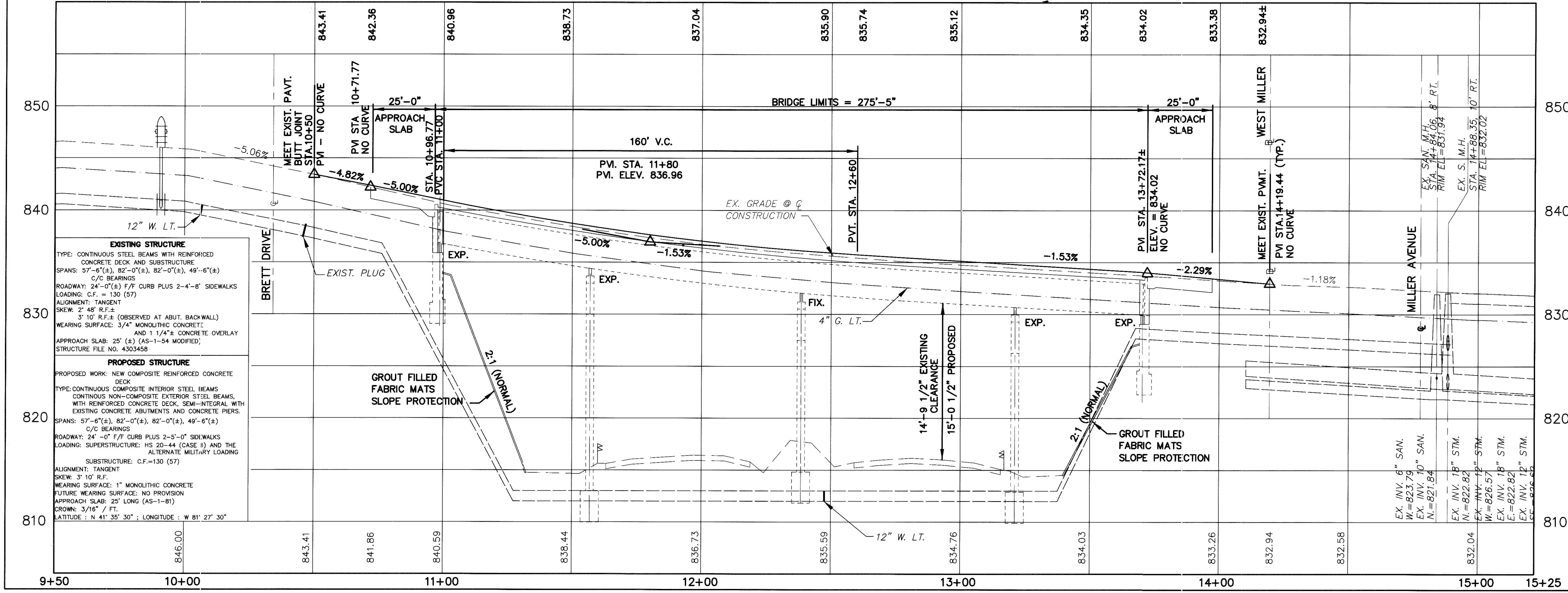
PLAN AND PROFILE
STA. 9+50 TO STA. 15+25

LAK-90-171

12
29



SHEET REFERENCES	
DESCRIPTION	NO.
INTERSECTION DETAILS	13
ESTIMATED QUANTITIES	11
GUARDRAIL QUANTITIES	11
STRUCTURE PLANS	17-29
CENTERLINE ALIGNMENT	13



EXISTING STRUCTURE
 TYPE: CONTINUOUS STEEL BEAMS WITH REINFORCED CONCRETE DECK AND SUBSTRUCTURE
 SPANS: 57'-6" (±), 82'-0" (±), 82'-0" (±), 49'-6" (±)
 C/C BEARINGS
 ROADWAY: 24'-0" (±) F/F CURB PLUS 2'-4"-8" SIDEWALKS
 LOADING: C.F. = 130 (57)
 ALIGNMENT: TANGENT
 SKEW: 2' 48" R.F. ±
 3' 10" R.F. ± (OBSERVED AT ABUT. BACKWALL)
 WEARING SURFACE: 3/4" MONOLITHIC CONCRETE AND 1 1/4" CONCRETE OVERLAY
 APPROACH SLAB: 25' (±) (AS-1-54 MODIFIED)
 STRUCTURE FILE NO. 4303458

PROPOSED STRUCTURE
 PROPOSED WORK: NEW COMPOSITE REINFORCED CONCRETE DECK
 TYPE: CONTINUOUS COMPOSITE INTERIOR STEEL BEAMS CONTINUOUS NON-COMPOSITE EXTERIOR STEEL BEAMS WITH REINFORCED CONCRETE DECK, SEMI-INTEGRAL WITH EXISTING CONCRETE ABUTMENTS AND CONCRETE PIERS.
 SPANS: 57'-6" (±), 82'-0" (±), 82'-0" (±), 49'-6" (±)
 C/C BEARINGS
 ROADWAY: 24'-0" F/F CURB PLUS 2'-5"-0" SIDEWALKS
 LOADING: SUPERSTRUCTURE: HS 20-44 (CASE II) AND THE ALTERNATE MILITARY LOADING
 SUBSTRUCTURE: C.F. = 130 (57)
 ALIGNMENT: TANGENT
 SKEW: 3' 10" R.F.
 WEARING SURFACE: 1" MONOLITHIC CONCRETE
 FUTURE WEARING SURFACE: NO PROVISION
 APPROACH SLAB: 25' LONG (AS-1-81)
 CROWN: 3/16" / FT.
 LATITUDE: N 41° 35' 30"; LONGITUDE: W 81° 27' 30"