

Curve Data on Center Line
 P.I. = Sta 96+81.90
 Interior Angle = 116° 25'
 Exterior Angle = 63° 35'
 Radius of Curve = 600.00'
 Length of Curve = 935.37'
 Sub-tangent = 29.88'
 External Distance = 0.47'

Curve Data on Center Line
 P.I. = Sta 112+54.77
 Interior Angle = 150° 04'
 Exterior Angle = 29° 56'
 Radius of Curve = 11° 30'
 Length of Curve = 499.06'
 Sub-tangent = 107.92'
 External Distance = 12.05'

B.M. #17 - Elev = 1155.36
 Knob on S.E. Cor. of S. Wall of
 Church Sta 100+35

MORRIS E. TOWN 22.25 Acres

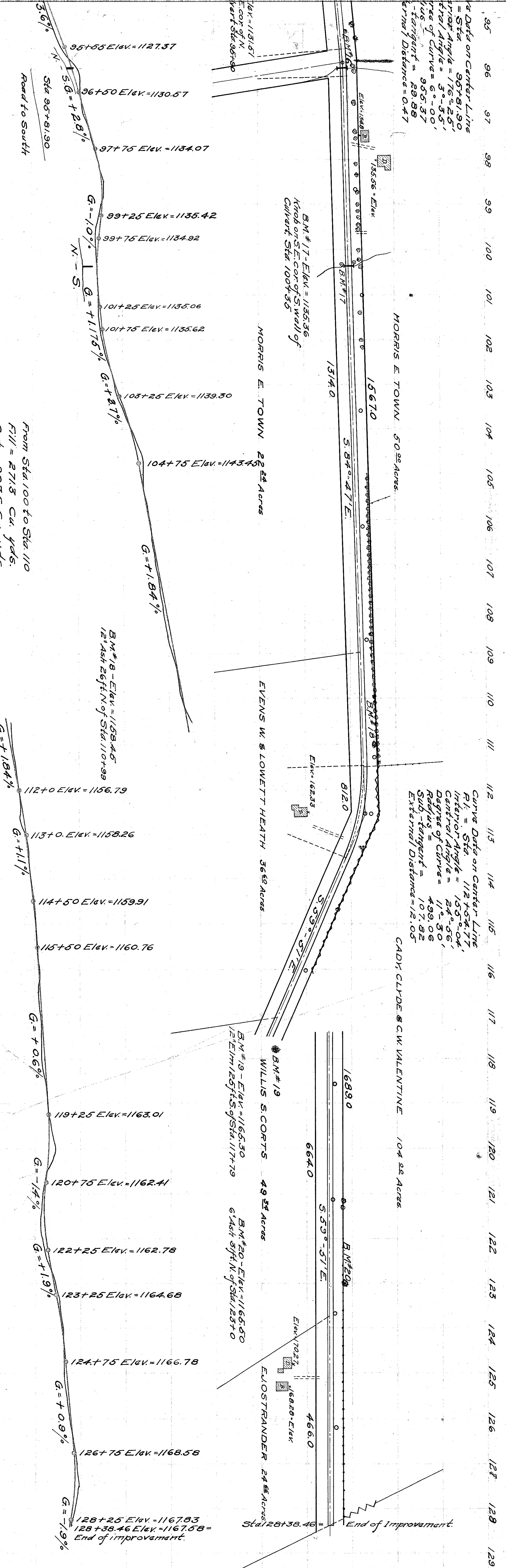
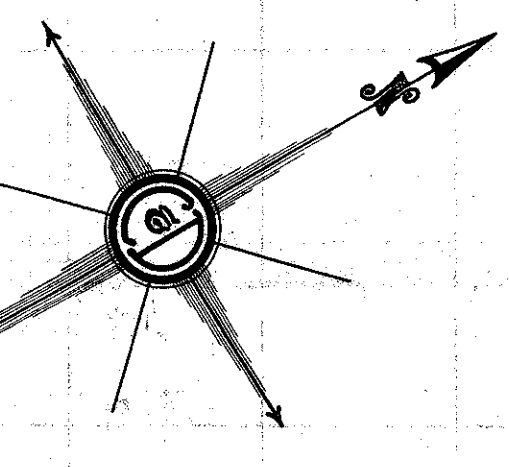
EVENIS W. & LOWETT HEATH 36.52 Acres

WILLIS S. CORTS 49.34 Acres

B.M. #20 - Elev = 1165.50
 6 1/2 ft S of Sta 125+0

ELOSTRANDER 24.54 Acres

CADY CLYDE & CW VALENTINE 104.22 Acres



Sta. 90 to Sta. 100
 263.0 Cu. yds.
 898.1 Cu. yds.

From Sta. 100 to Sta. 110
 Fill = 271.5 Cu. yds.
 Cut = 907.5 Cu. yds.

From Sta. 110 to Sta. 120
 Fill = 74.4 Cu. yds.
 Cut = 1,095.5 Cu. yds.

From Sta. 120 to Sta. 128+50
 Fill = 180.81 Cu. yds.
 Cut = 706.5 Cu. yds.

