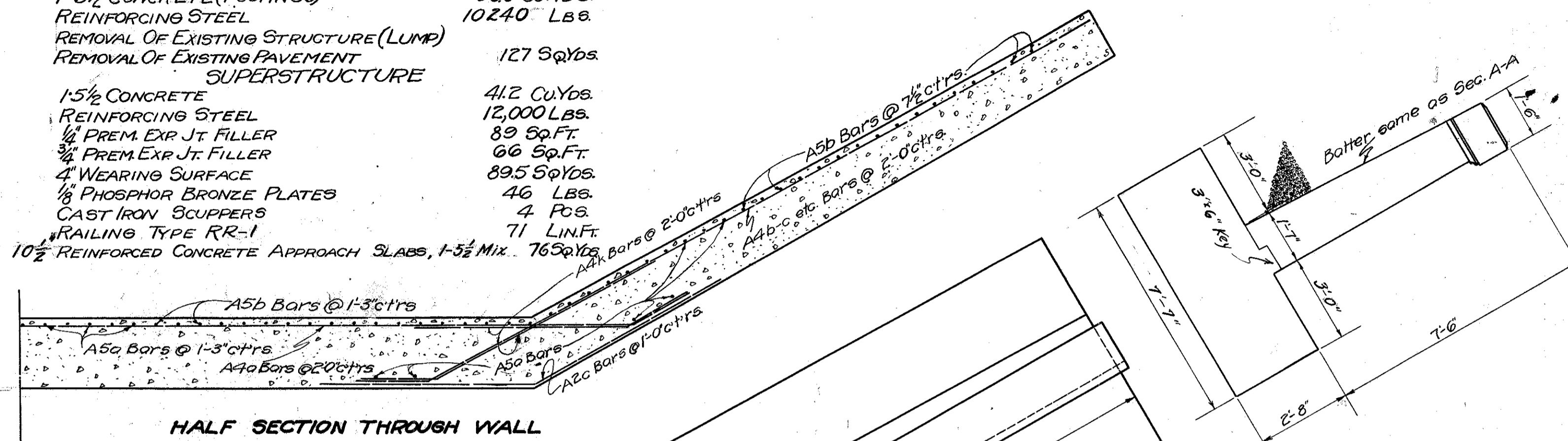
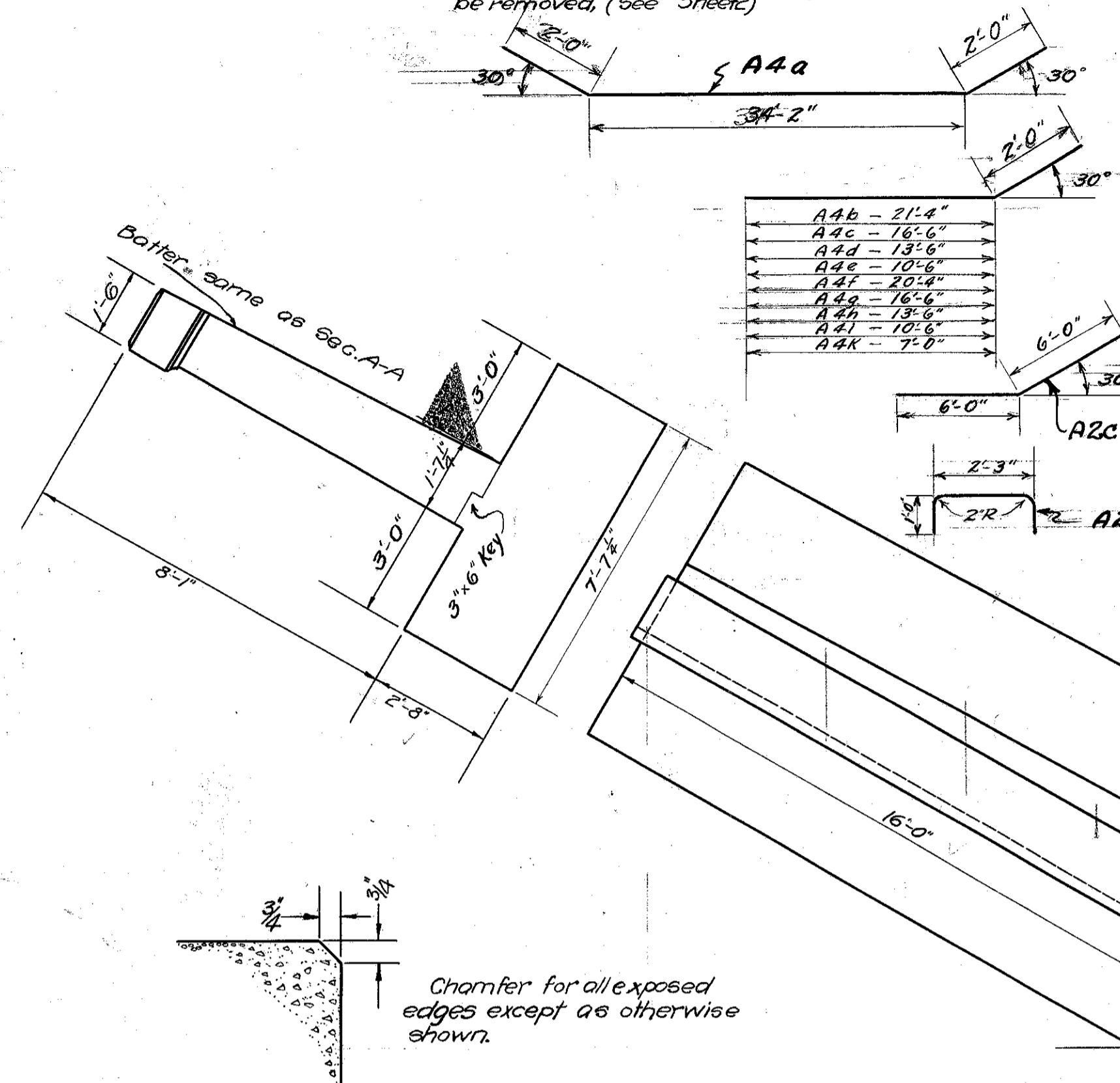


Existing Structure; Sandstone Arch 25'-4" Span, 14'-6" Rise with Sandstone wings at Sta 74+90 to be removed. (See Sheet)

Mark	Size	Shape	No.	Length	Weight
A5a	3/8"	Straight	42	14'-0"	883
A5b	"	"	64	10'-9"	1033
A5c	"	"	34	7'-3"	370
A4a	5/8"	Bent	7	38'-2"	279
A4b	"	"	4	23'-4"	97
A4c	"	"	1	18'-6"	19
A4d	"	"	1	15'-6"	16
A4e	"	"	1	12'-6"	13
A4f	"	"	1	22'-4"	93
A4g	"	"	4	18'-6"	19
A4h	"	"	1	15'-6"	16
A4i	"	"	1	12'-6"	13
A2b	1/2"	* Straight	27	9'-5"	170
A1a	3/8"	"	4	26'-6"	40
A1b	"	"	8	3'-0"	9
A2a	1/2"	Bent	46	4'-3"	131
A1c	3/8"	Straight	10	4'-7"	17
A4k	5/8"	Bent	28	9'-0"	263
A2c	1/2"	Bent	28	12'-0"	224
A1e	3/8"	Bent	10	33'-0"	124
A5d	3/4"	* Bent	168	6'-6"	1641
Total Steel in Pounds					5470

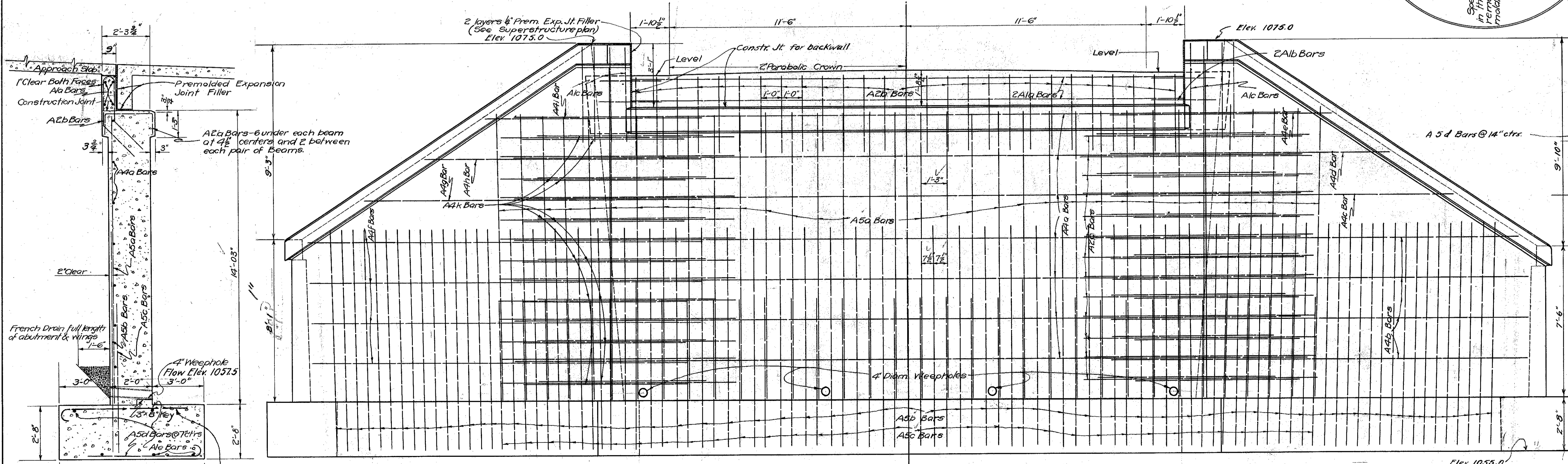
ESTIMATE QUANTITIES

SUBSTRUCTURE		
TEMPORARY DETOUR BRIDGE & APPROACHES		
EXCAVATION (SHALE ROCK)		LUMP
EXCAVATION (EARTH)		110 CU. YDS.
1'-6 1/2" CONCRETE (WALLS)		320 CU. YDS.
1'-6 1/2" CONCRETE (FOOTINGS)		114 CU. YDS.
REINFORCING STEEL		966 CU. YDS.
REMOVAL OF EXISTING STRUCTURE (LUMP)		10240 LBS.
REMOVAL OF EXISTING PAVEMENT		127 SQ. YDS.
SUPERSTRUCTURE		
15 1/2" CONCRETE		412 CU. YDS.
REINFORCING STEEL		12,000 LBS.
1/2" PREM. EXP. JT. FILLER		89 SQ. FT.
3/4" PREM. EXP. JT. FILLER		66 SQ. FT.
4" WEARING SURFACE		895 SQ. YDS.
1/8" PHOSPHOR BRONZE PLATES		46 LBS.
CAST IRON SCUPPERS		4 Pcs.
RAILING TYPE RR-1		71 LIN. FT.
10 1/2" REINFORCED CONCRETE APPROACH SLABS, 1-5 1/2" MIX.		765 SQ. YDS.



* For diagrams of A2b and A5d see bar diagrams on sheet No. 4.

PLAN WEST ABUTMENT



ELEVATION WEST ABUTMENT

WING SECTION A-A

NOTE
No horizontal construction joints other than those shown will be permitted. Vertical construction joints necessary for construction allowed only by special permission of the Engineer. All construction joints in abutments above low water elevation shall be sealed on back with Type B waterproofing, for which payment is included with concrete.

WEST ABUTMENT FOR CONCRETE BEAM BRIDGE OVER BATES CREEK STA 74+91
LAKE COUNTY S.H.(I.C.H.)153 SEC. H
JANUARY 1930 BUREAU OF BRIDGES

DESIGNED H.A.C.	DRAWN H.A.C.	TRACED H.A.C.	CHECKED J. W. 9/17	REVIEWED L.M.C. - 1/14/30
-----------------	--------------	---------------	--------------------	---------------------------

SECTION OF ABUTMENT ON A-A