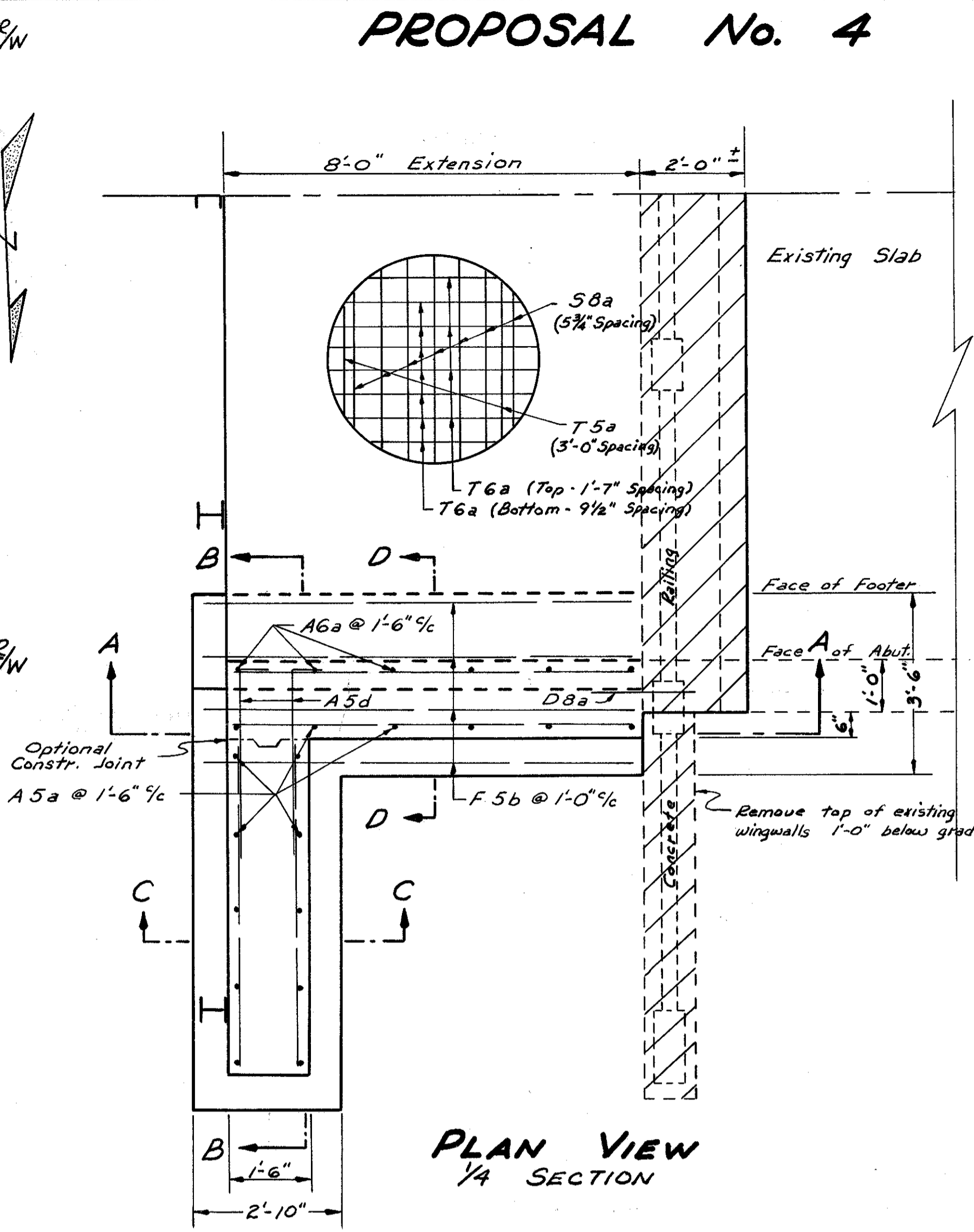
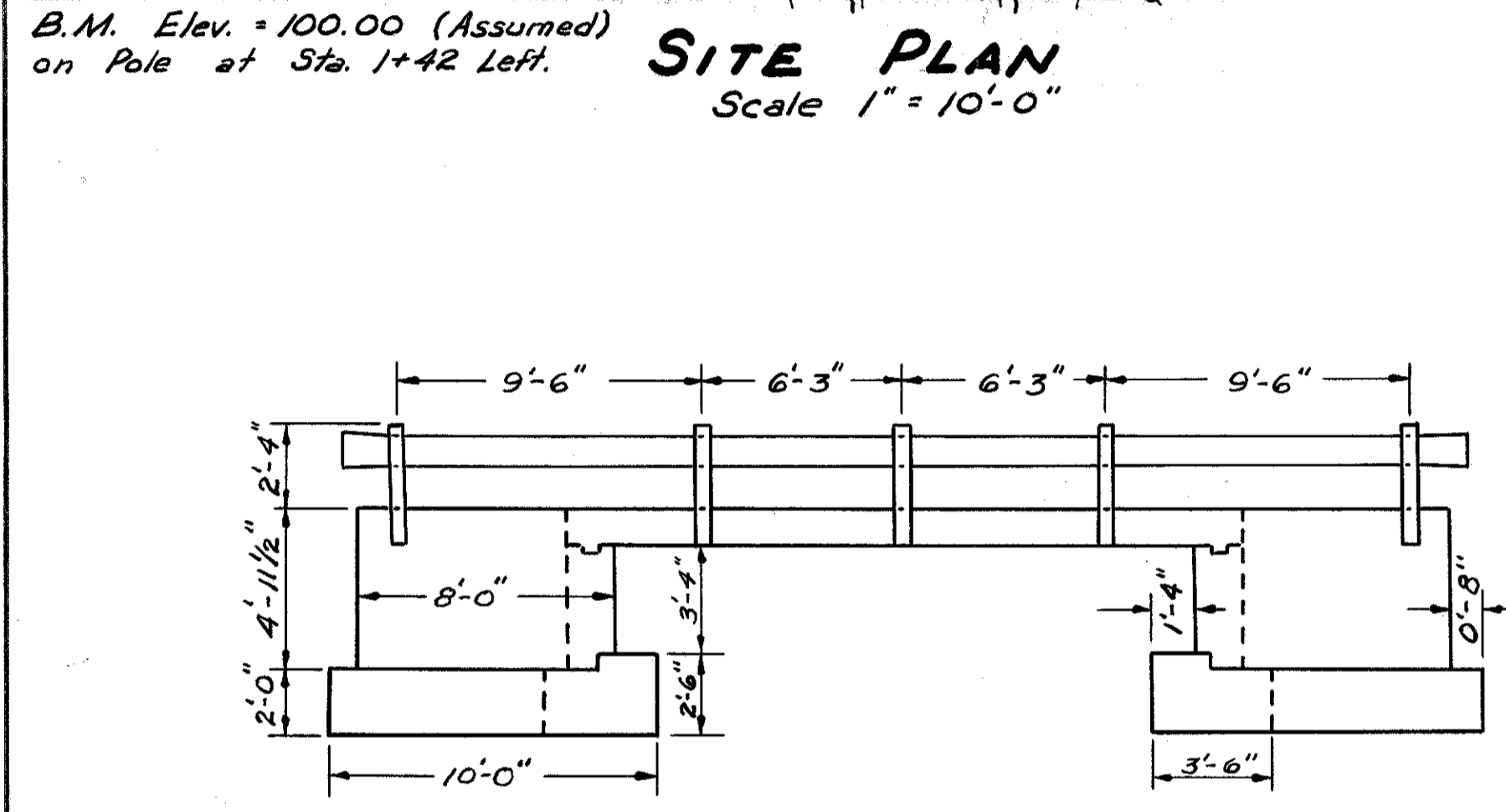
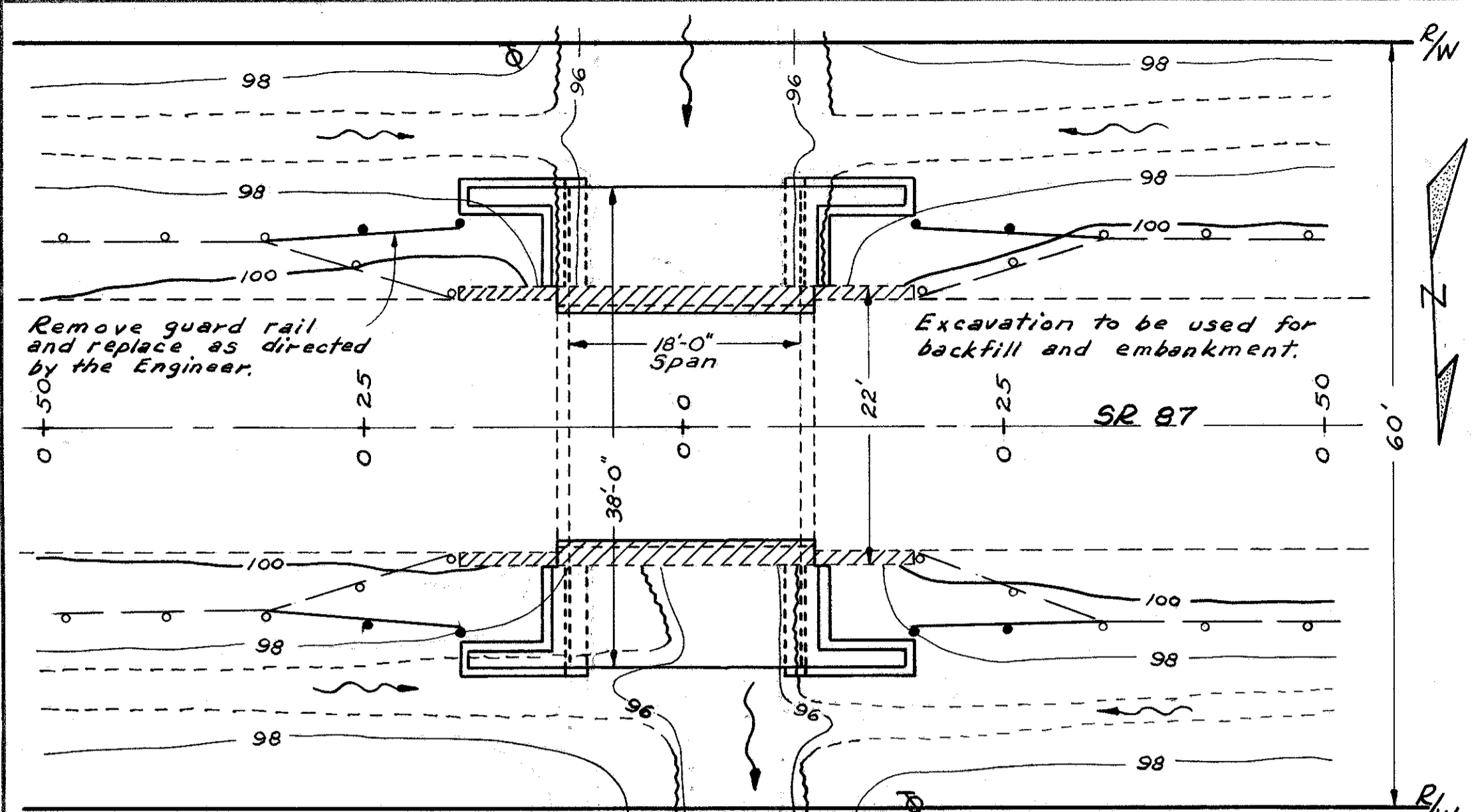


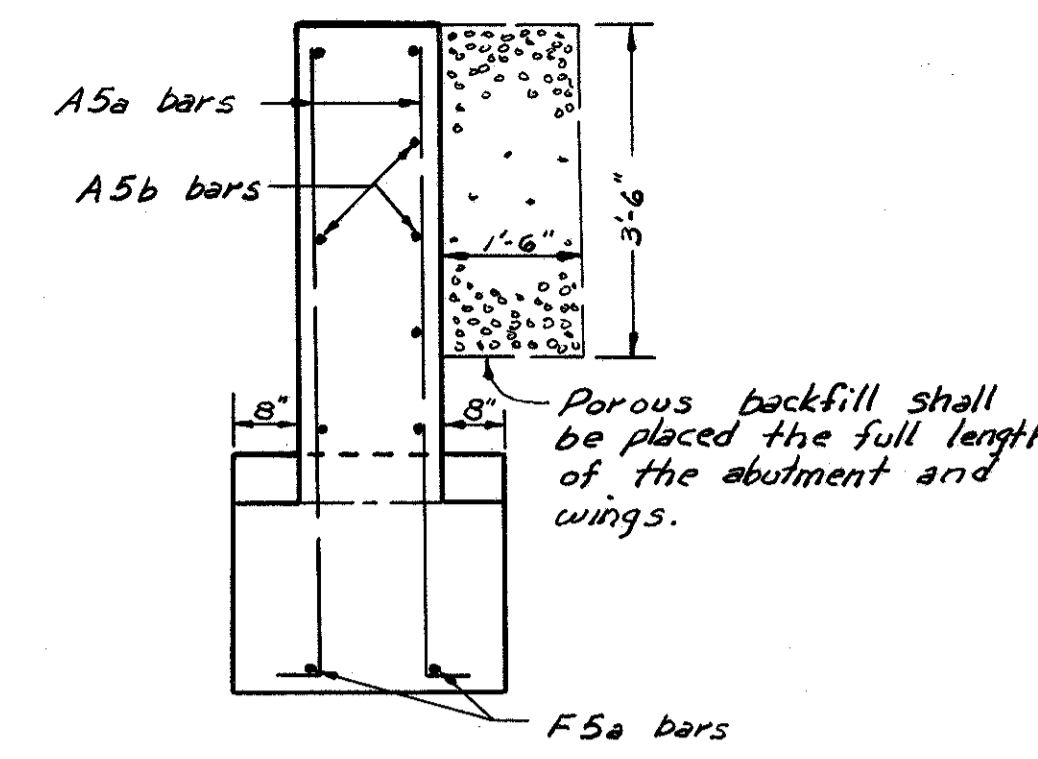
PROPOSAL No. 4

GEAUGA COUNTY  
S.R. 87 SEC. 14.46  
BRIDGE No. GEA.87-1460  
LOCATION : 1.51 miles east of S.R.168 on S.R.87

5  
6



Note: Remove disintegrated concrete railing, portion of concrete slab and pavement as shown by cross-hatched areas. (Unsound concrete in slab to be cut out as directed by the Engineer.) Leave in place any reinforcing steel in existing slab. Bars normal to centerline of pavement are to be welded to the extended bars.



EXISTING BRIDGE DATA  
TYPE: Concrete slab on concrete abutments  
SPAN: 18'-0"  
ROADWAY: 19'-3"  $\frac{1}{4}$  of railings  
SKEW: None  
CONDITION: Concrete railings & fascias, Poor  
DATE BUILT: 1916

PROPOSED BRIDGE DATA  
TYPE: Extend with concrete slab on concrete abutments  
SPAN: 18'-0"  
ROADWAY: 38'-0"  $\frac{1}{4}$  of guard rail posts

REINFORCING STEEL

MARK	SIZE	NO	LENGTH	WEIGHT	SHAPE
S8a	1" $\phi$	40	21'-10"	2332	B
T6a	$\frac{3}{8}$ " $\phi$	76	9'-6"	1084	S
T5a	$\frac{5}{8}$ " $\phi$	8	19'-8"	164	S
F5a	$\frac{5}{8}$ " $\phi$	8	9'-6"	79	S
F5b	$\frac{5}{8}$ " $\phi$	32	8'-4"	278	S
A6a	$\frac{3}{4}$ " $\phi$	24	4'-2"	150	S
A5a	$\frac{5}{8}$ " $\phi$	64	7'-0"	467	B
A5b	$\frac{5}{8}$ " $\phi$	32	6'-2"	206	S
A5c	$\frac{5}{8}$ " $\phi$	32	7'-8"	256	S
A5d	$\frac{5}{8}$ " $\phi$	24	3'-6"	88	B
D8a	1" $\phi$	24	2'-0"	128	S
TOTAL WEIGHT				5232	

WORK REQUIRED: Remove portion of existing structure (disintegrated concrete railings, disintegrated sections of slab below railings and all wings 1'-0" below grade of pavement). Extend existing structure 8'-0" on each side with concrete slab on concrete abutments as shown per detail plan. Attach deep beam guard rail for bridge railing. Reshape ditches and grade berms as directed by the Engineer. Existing guard rail to be carefully removed and stored, and then replaced after fill for embankment has been completed.

GENERAL NOTES  
Reference shall be made to Standard Drawing S.B.1-47, revised 1-20-48 as shown for span of 18'-0" and 13 $\frac{1}{2}$ " slab. (5-20-46)  
All excavation for proposed structure shall be used for backfill & embankment.

TRAFFIC: The construction of THIS proposal will not require the closing to traffic of the highway and one lane shall be maintained at all times. The item of maintaining traffic shall include furnishing lights, signs, and barricades, and watchmen necessary to secure the flow of traffic twenty-four (24) hours daily.

Note: The State Highway Department shall waterproof and place asphaltic concrete surface course over concrete slab extension.

ESTIMATED QUANTITIES

Item No	Quantity	Unit	Description	E. Abut.	W. Abut.	Slab	General	Total Quantities
E-2	44	Cu.Yd.	Unclassified Excavation				44	44
S-1	17.0	Cu.Yd.	Class "C" Concrete Super-struct.			17.0		17.0
S-1	13.6	Cu.Yd.	Class "E" " - Walls	6.8	6.8			13.6
S-1	15.8	Cu.Yd.	Class "E" " - Footings	7.9	7.9			15.8
S-4	5232	Lb.	Reinforcing Steel	826	826	3580		5232
S-14	63.0	Lin.Ft.	Railing (Type I-15.13)				63.0	63.0
S-22	Lump	Sum	Removal of Portions of Exist. Struct.				Lump	Lump
S-23	24	Lin.Ft.	Dowel Holes	12	12			24
S-29	8.0	Cu.Yd.	Porous Backfill	4.0	4.0			8.0
I-15	64	Lin.Ft.	Guard Rail Removed & Replaced				64	64

