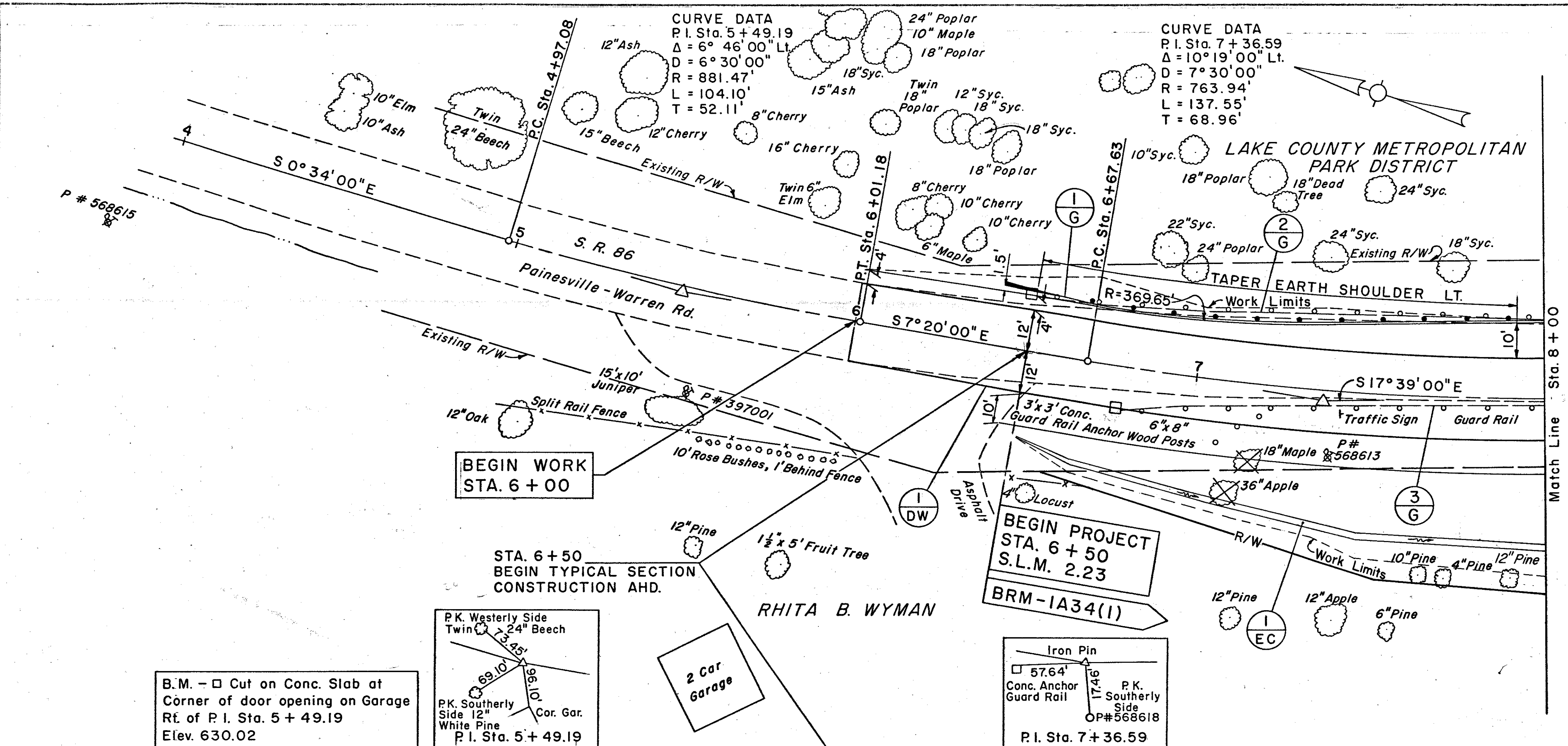
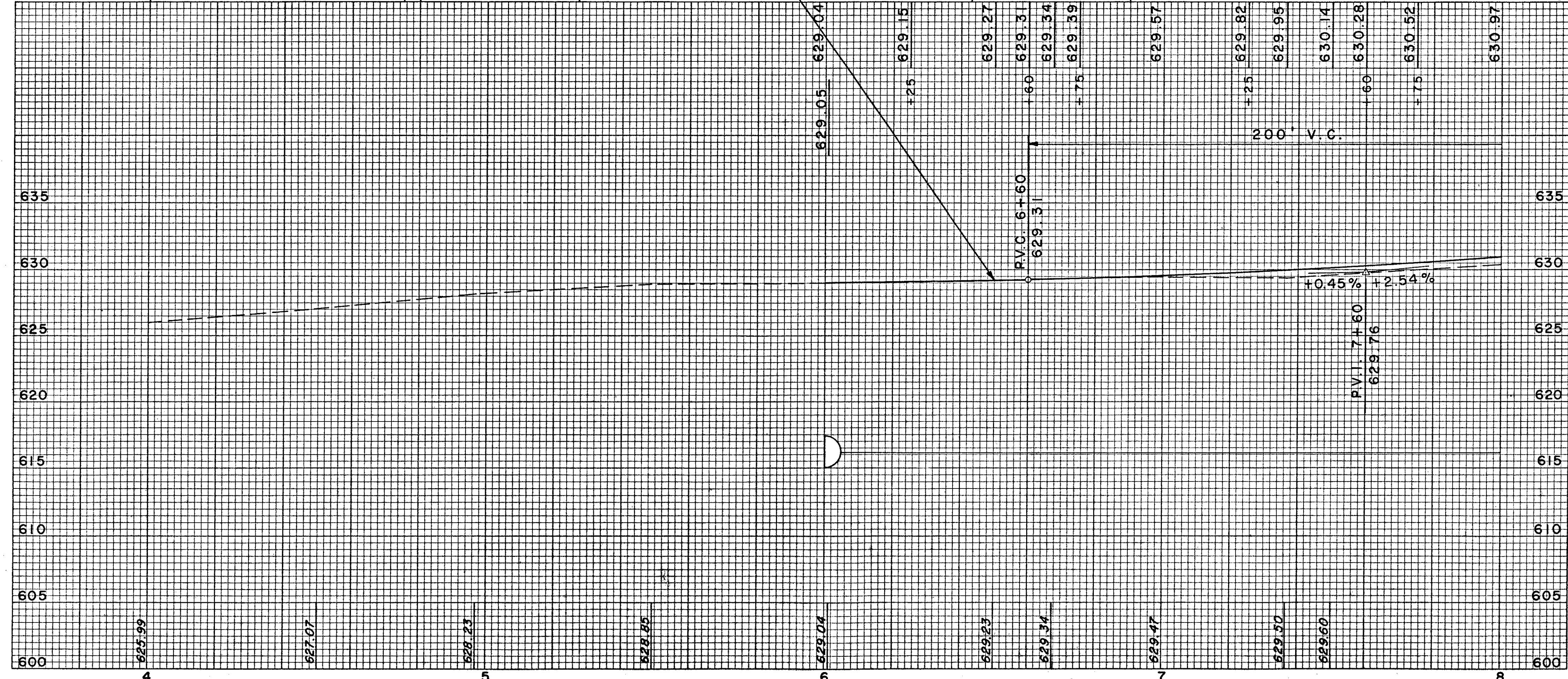


LAKE COUNTY
LAK-86-2.23

CALC. DATE 12-9-82
CHKD. DATE 10-11-83



REF. NO.	STATION TO STATION	SIDE	202	404	408	ITEM SPECIAL-DITCH PROTECT.	606	
			GUARD RAIL REMOVED	ASPHALT CONC. AC-20 (DR'WAYS)	BIT. PRIME COAT		GUARD RAIL TYPE 5	ANCHOR ASSEMB. TYPE A
			L.F.	C.Y.	GAL.	S.Y.	L.F.	EACH
1-G	6+41-8+00	LT.					134	1
2-G	6+45±-8+00	LT.	155					
3-G	6+70±-8+00	RT.	130					
1-DW	6+00-6+53	RT.		1	2			
1-EC	6+50-8+00	RT.				135		
TOTAL			285	1	2	135	134	1



EXCAVATION
EMBANKMENT
ELEVATION