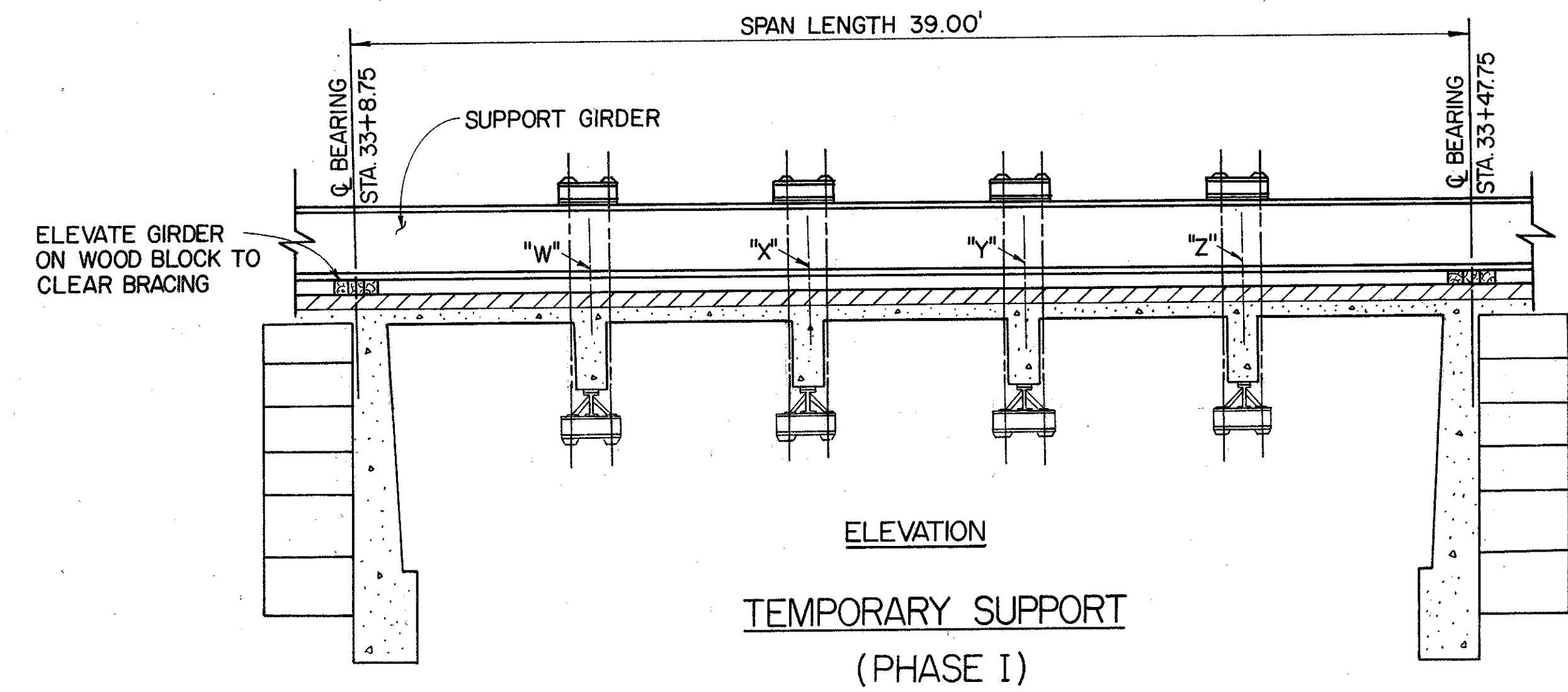
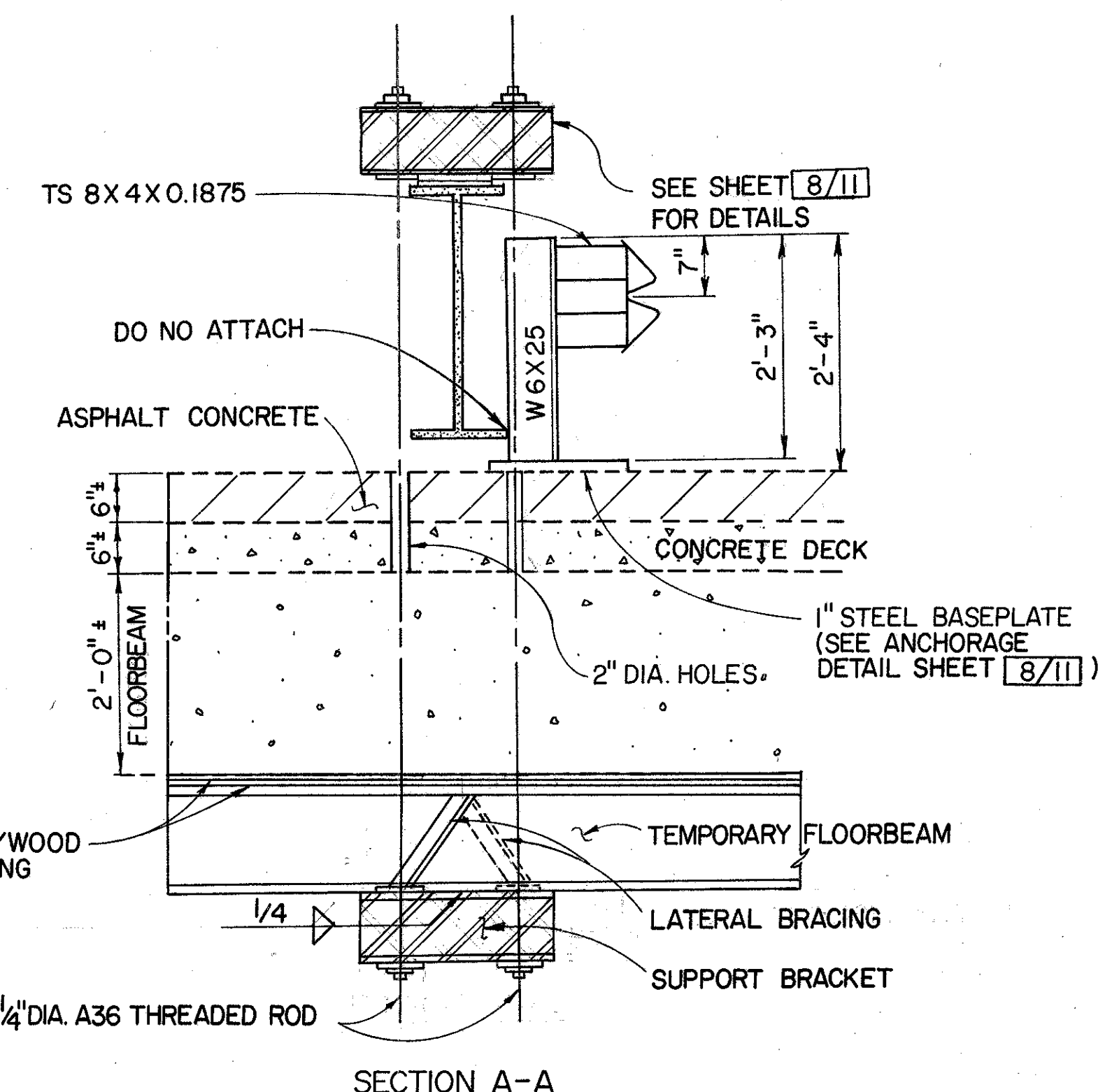
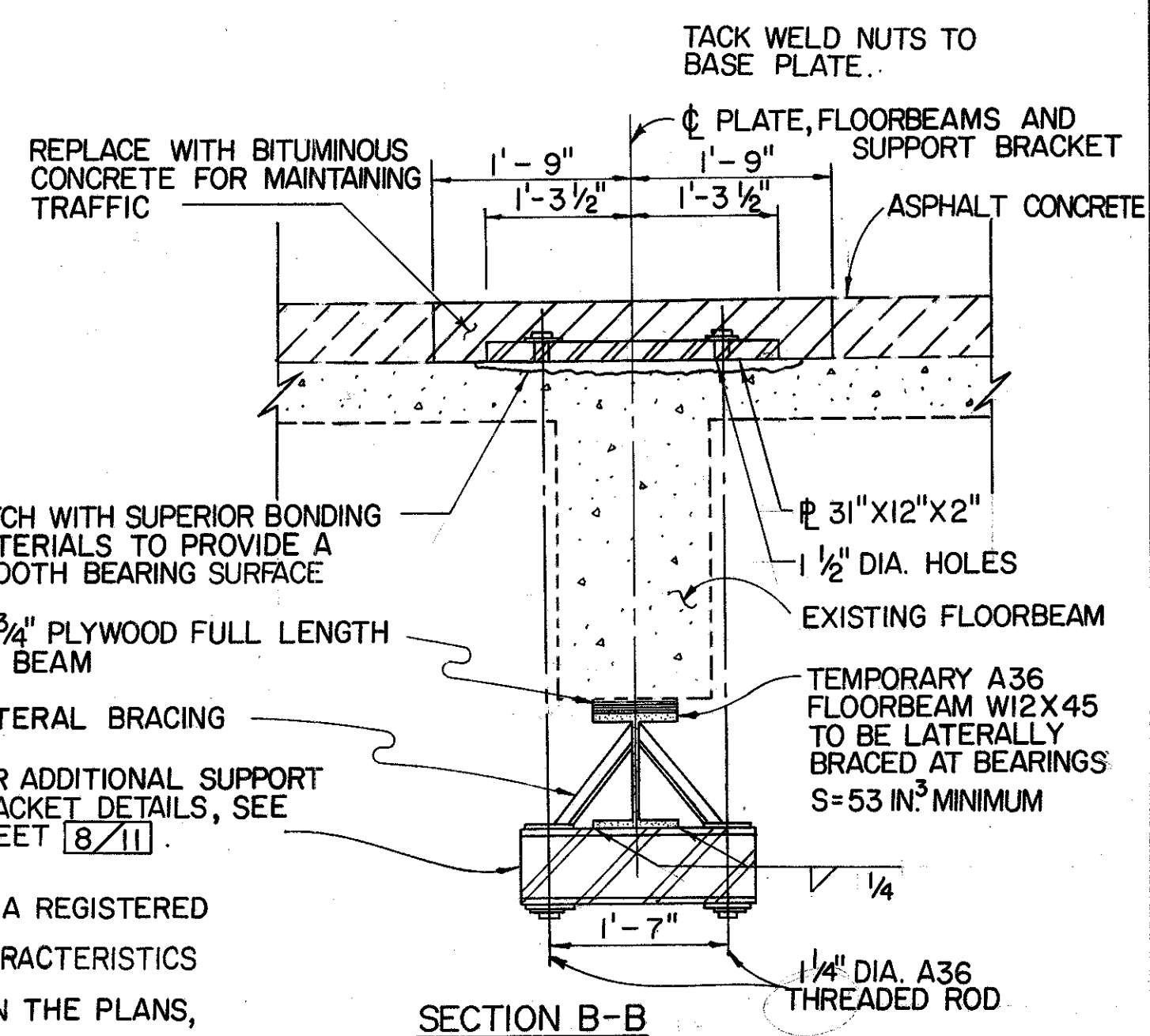
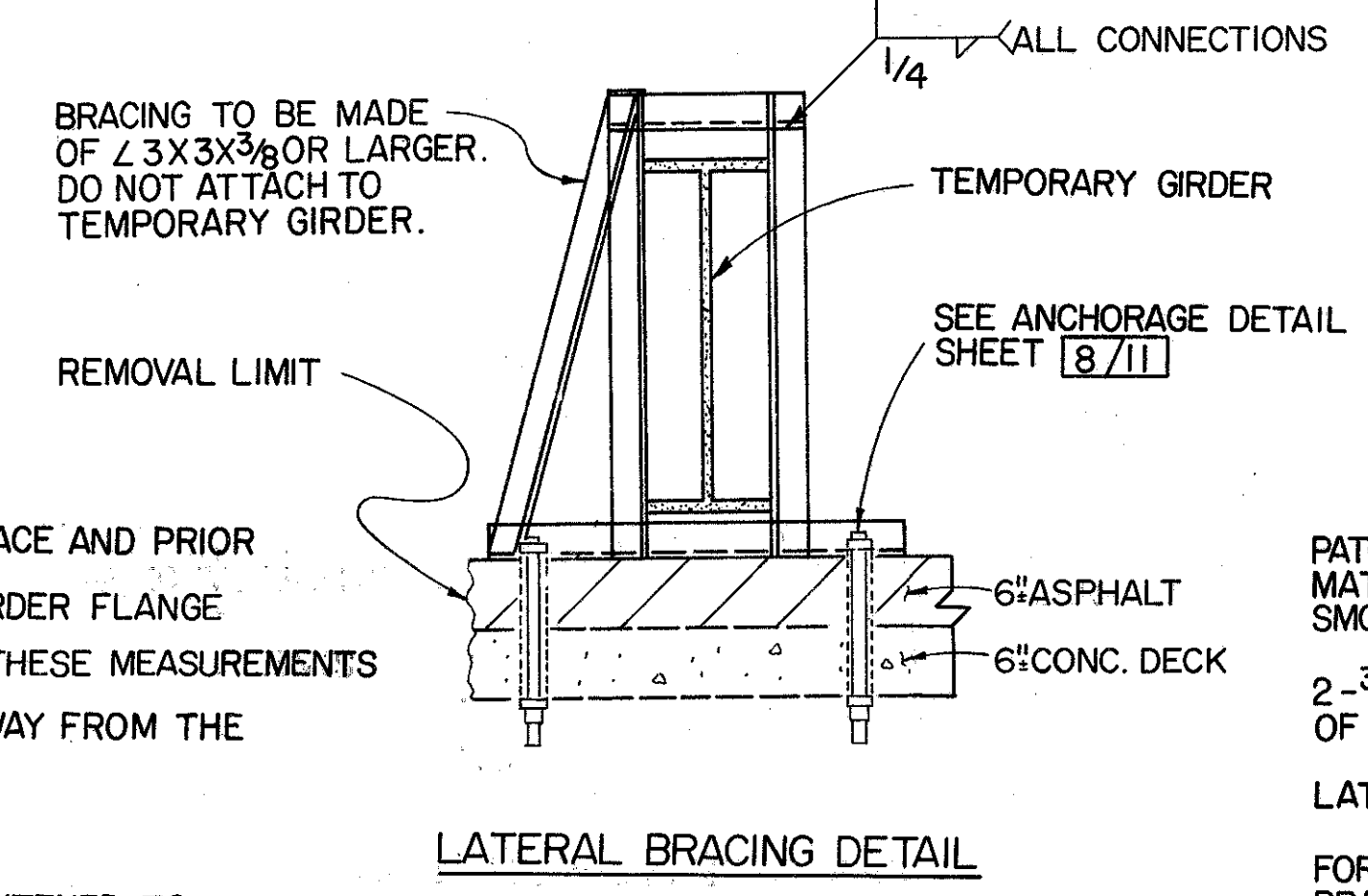


FOR DETAILS NOT SHOWN SEE
STD. DRAWING DBR-2-73



TEMPORARY SUPPORT NOTES

- THE TEMPORARY SUPPORT GIRDER SHALL HAVE THE FOLLOWING PROPERTIES:
 - A 36 STEEL
 - MINIMUM SECTION MODULUS OF 395 IN³
 - MAXIMUM FLANGE WIDTH OF 14 INCHES.
 - MAXIMUM SPACING OF LATERAL BRACING SHALL BE 13 FEET.
 - LATERAL BRACING AT BEARINGS
- AFTER THE TEMPORARY SUPPORT GIRDER IS IN PLACE AND PRIOR TO PLACING HANGER RODS, THE ELEVATION OF A GIRDER FLANGE SHALL BE TAKEN AT POINTS "W", "X", "Y", AND "Z". THESE MEASUREMENTS SHALL BE REFERENCED TO A FIXED BENCHMARK AWAY FROM THE EXISTING BRIDGE.
- PAIRS OF HANGER RODS SHALL BE UNIFORMLY TIGHTENED TO PRODUCE THE FOLLOWING DOWNWARD CHANGE IN ELEVATION OF THE SUPPORT GIRDER OR UNTIL DECK UPLIFT IS NOTED: POINT "W" - 1/4" POINT "X" - 3/8" POINT "Y" - 3/8" POINT "Z" - 1/4"
- CALCULATIONS AND DIMENSIONS ARE BASED UPON THE USE OF A W33 X130 GIRDER. ALTERNATE TEMPORARY SUPPORT COMPONENTS MAY BE USED AT THE OPTION OF THE CONTRACTOR.



ALTERNATE COMPONENTS SHALL BE DESIGNED BY A REGISTERED PROFESSIONAL ENGINEER, HAVE STRENGTH CHARACTERISTICS EQUAL TO OR IN EXCESS OF THE SYSTEM SHOWN IN THE PLANS, AND BE APPROVED BY THE ENGINEER.

5. PAYMENT SHALL BE THE CONTRACT PRICE BID FOR ITEM SPECIAL-TEMPORARY SUPPORT SYSTEM.

STATE OF OHIO DEPARTMENT OF TRANSPORTATION DISTRICT 12 BRIDGE DEPARTMENT						7/11
TEMPORARY SUPPORT DETAILS						
BRIDGE LAK-86-0195 OVER KELLOGG CREEK						
DESIGNED	DRAWN	TRACED	CHECKED	REVIEWED	DATE	REVISED
EJA	SDG	SDG	DWL	GWM	8/13/85	