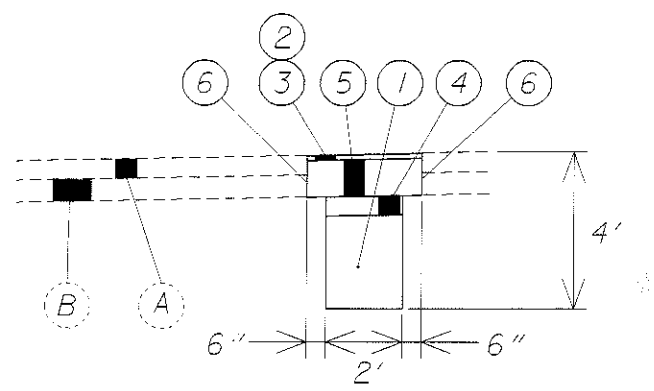


- PROPOSED
- ① ITEM 203 - EMBANKMENT
  - ITEM 203 - EXCAVATION NOT INCLUDING EMBANKMENT CONSTRUCTION
  - ② ITEM 448 - 1-1/2" ASPHALT CONCRETE SURFACE COURSE, TYPE 1, PG 64-22
  - ③ ITEM 407 - TACK COAT
  - ④ ITEM 304 - AGGREGATE BASE
  - ⑤ ITEM 305 - 12-1/2 CONCRETE BASE
  - ⑥ ITEM 255 - FULL DEPTH PAVEMENT SAWING
  - ⑦ ITEM 606 - GUARDRAIL, TYPE 5
  - ⑧ ITEM 659 - SEEDING AND MULCHING
  - ⑨ ITEM 203 - LINEAR GRADING
  - ⑩ ITEM 203 - EMBANKMENT

ALL ITEMS INCLUDED IN ITEM 253 - PAVEMENT REPAIR, AS PER PLAN. SEE PLAK NOTE ON SHEET X.



PAVEMENT REPAIR, AS PER PLAN  
DETAIL

- EXISTING
- Ⓐ ASPHALT CONCRETE, 6" ±
  - Ⓑ CONCRETE BASE, 7" ±
  - Ⓒ BITUMINOUS AGGREGATE BASE
  - Ⓓ GUARDRAIL

I:\PR0JL\CTS\LAK86\dgn\g003.dgn 11 APR-2002 2:42PM biblayney