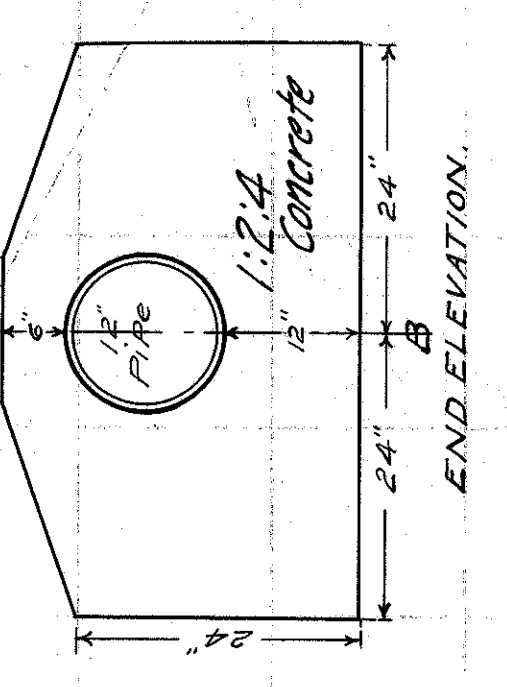
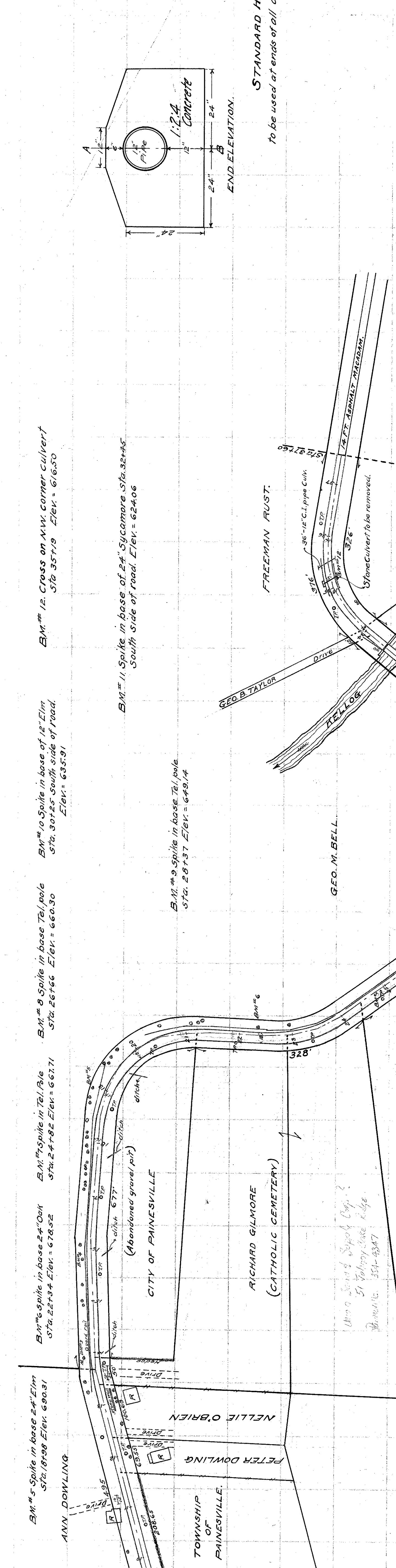
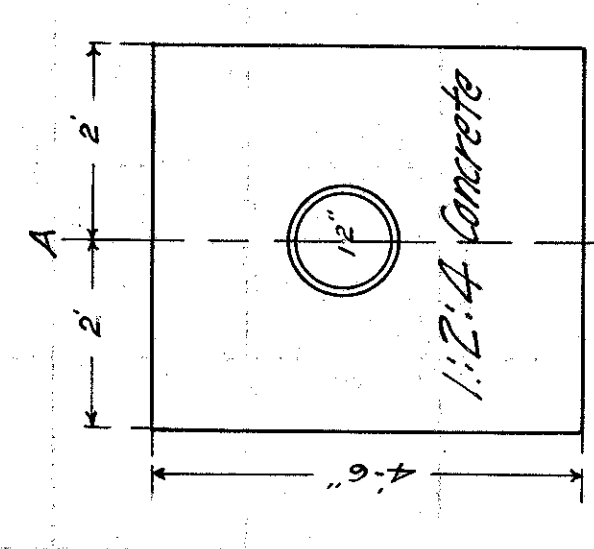


7/3

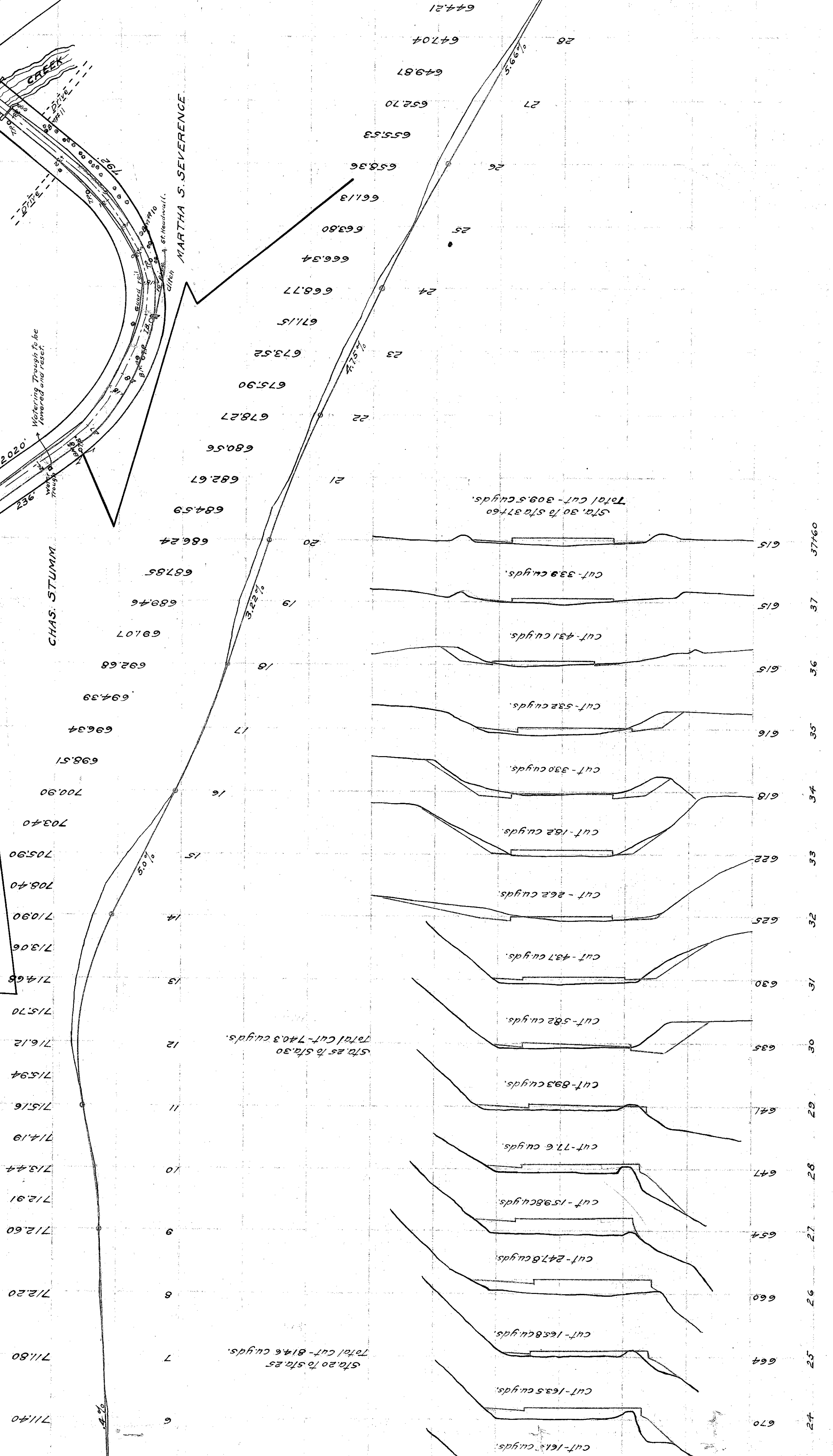
B.M. #4 Spike in 12" Elm Sta. 15+41 Elev. 701.35
 In 30' Maple Elev. 722.67
 B.M. #5 Spike in base 24" Elm Sta. 18+08 Elev. 690.31
 B.M. #6 Spike in base 24" Oak Sta. 22+94 Elev. 678.52
 B.M. #7 Spike in Tel. Pole Sta. 24+82 Elev. 667.71
 B.M. #8 Spike in base Tel. pole Sta. 26+66 Elev. 660.30
 B.M. #9 Spike in base Tel. pole Sta. 26+66 Elev. 660.30
 B.M. #10 Spike in base of 12" Elm Sta. 30+25 south side of road. Elev. = 635.91
 B.M. #11 Spike in base of 24" Sycamore Sta. 32+45 south side of road. Elev. = 624.06
 B.M. #9 Spike in base Tel. pole Sta. 28+37 Elev. = 649.14



STANDARD HEADWALL.
 To be used at ends of all driveway pipes



END ELEVATION
 12" CAST IRON PIPE CULVERT AT STA. 36+50
 SEC. A-B



DETAIL
 OF INLET

