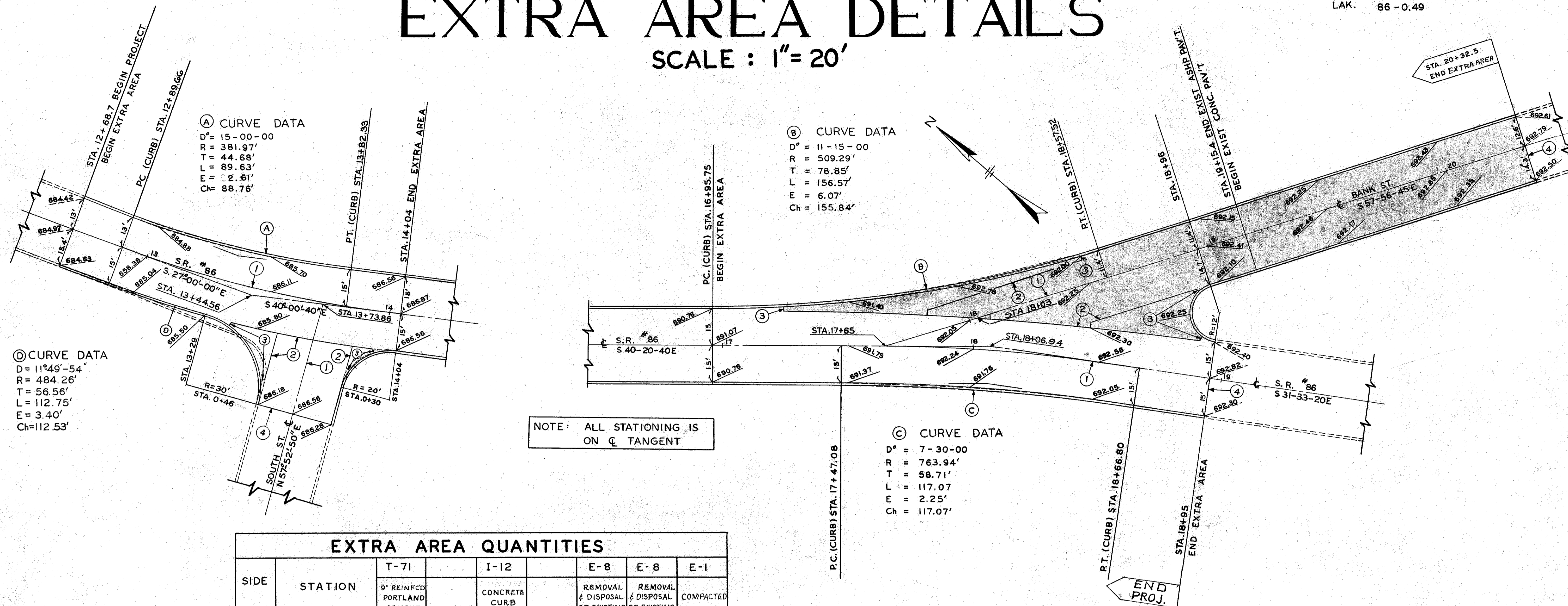


EXTRA AREA DETAILS

SCALE : 1" = 20'



(A) CURVE DATA
D = 15-00-00
R = 381.97'
T = 44.68'
L = 89.63'
E = 2.61'
Ch = 88.76'

(B) CURVE DATA
D = 11-15-00
R = 509.29'
T = 78.85'
L = 156.57'
E = 6.07'
Ch = 155.84'

(D) CURVE DATA
D = 11°49'-54"
R = 484.26'
T = 56.56'
L = 112.75'
E = 3.40'
Ch = 112.53'

NOTE: ALL STATIONING IS ON ϕ TANGENT

(C) CURVE DATA
D = 7-30-00
R = 763.94'
T = 58.71'
L = 117.07'
E = 2.25'
Ch = 117.07'

EXTRA AREA QUANTITIES

| SIDE | STATION | | T-71 | I-12 | E-8 | E-8 | E-1 |
|--------------------------------------|---------------------|--------------------|---|-----------------------------------|---|---|--------------------------------|
| | FROM | TO | 9" REINFCD PORTLAND CEMENT PAVEMENT SQ. YDS. | CONCRETE CURB TYPE-2A LIN. FT. | REMOVAL & DISPOSAL OF EXISTING CURB LIN. FT. | REMOVAL & DISPOSAL OF EXISTING PAVEMENT SQ. YDS. | COMPACTED SUBGRADE SQ. YDS. |
| | S.R. 86 12+68.7 | S.R. 86 14+04 | 557 | | | 542 | 557 |
| RT. | S.R. 86 12+68.7 | SOUTH ST 0+46 | | 108 | 110 | | |
| RT. | SOUTH ST 0+46 | S.R. 86 14+04 | | 43 | 43 | | |
| LT. | S.R. 86 12+68.7 | S.R. 86 14+04 | | 131 | 131 | | |
| TOTAL NORMAL PARTICIPATN | | | 557 | 282 | 284 | 542 | 557 |
| | S.R. 86 16+95.75 | S.R. 86 18+95 | 674 | | | 657 | 674 |
| LT. | S.R. 86 16+95.75 | BANK ST 18+13 | | 112 | 112 | | |
| RT. | S.R. 86 16+95.75 | S.R. 86 18+95 | | 197 | 197 | | |
| TOTAL NORMAL PARTICIPATION | | | 674 | 309 | 309 | 657 | 674 |
| | S.R. 86 17+24 | BANK ST 20+32.5 | 771 | | | 750 | 771 |
| LT. | BANK ST 18+13 | BANK ST 19+15.4 | | | 102 | | |
| RT. | S.R. 86 18+95 | BANK ST 19+15.4 | | | 50 | | |
| LT. | S.R. 86 18+13 | BANK ST 20+32.5 | | 219 | | | |
| RT. | S.R. 86 18+95 | BANK ST 20+32.5 | | 167 | | | |
| TOTAL 100% PAINESVILLE PARTICIPATION | | | 771 | 386 | 152 | 750 | 771 |
| TOTAL | | | 2002 | 977 | 745 | 1949 | 2002 |

LEGEND

- ① STANDARD LONGITUDINAL JOINT
- ② STANDARD KEY JOINT WITHOUT TIE BARS
- ③ EXPANSION JOINT WITHOUT DOWELS (2' LENGTH)
- ④ STANDARD EXPANSION BOLT JOINT

100% CITY OF PAINESVILLE PARTICIPATION