

SR. 86
LAKE COUNTY STATE HIGHWAY "E"
 PETITION NO. 372
WEED'S CORNERS EXTENSION ROAD

H-1
 S
 212

299

May-June 1912.
J. Edward
 Resident Engineer.

Approved:
James R. Markin
 State Highway Commissioner.

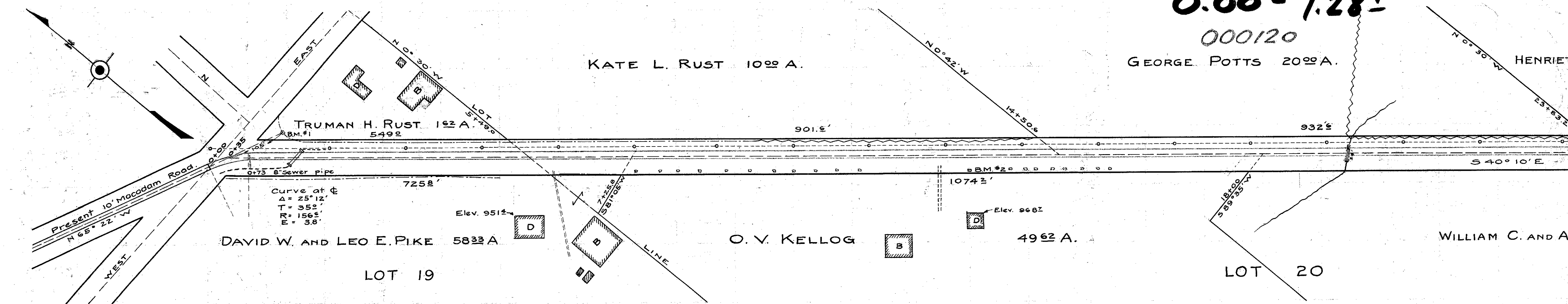
Engr. J.S. Cook
 ASST. A.W. Craig
 A.L. Prentice

CONSTRUCTION
 BUREAU
 APR 6 1912
 GROUND PHOTOLAB

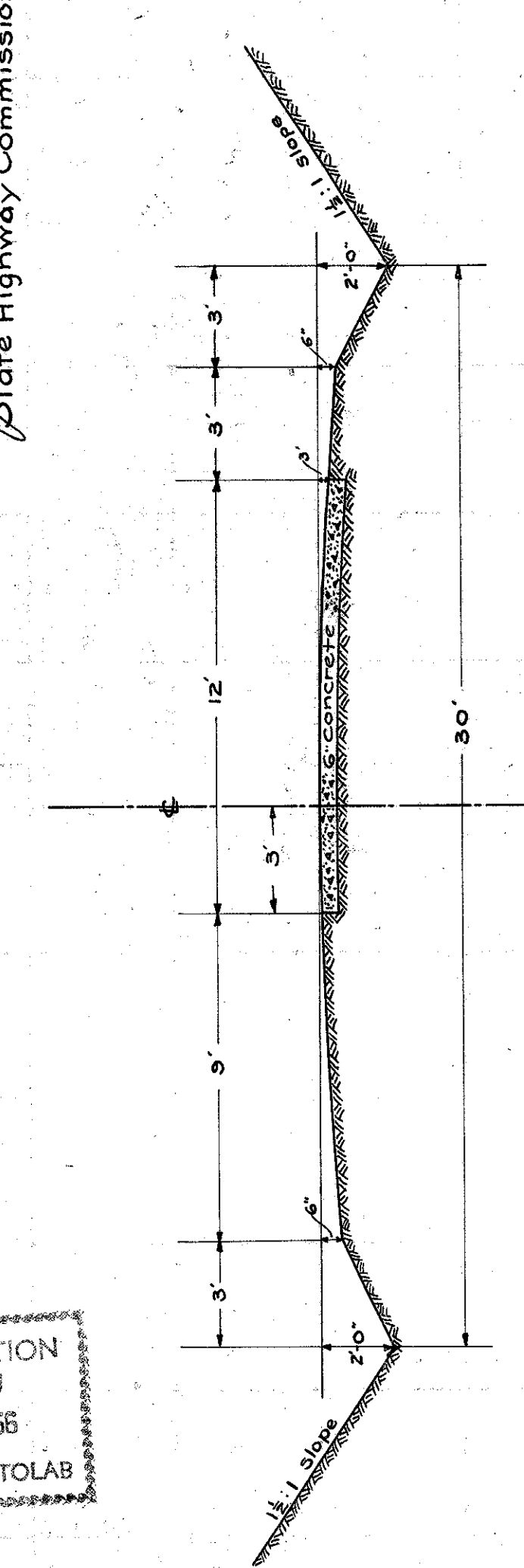
Scale: Plan, 1"=100'
 Profile, 1"=100' Horizontal,
 1"=10' Vertical.
 Sections 1"=10'

Note: Elevations and pluses for the beginning and end of vertical curves are noted on the profile when not on even stations. Stakes are set at each station 15 ft. north from & of road.

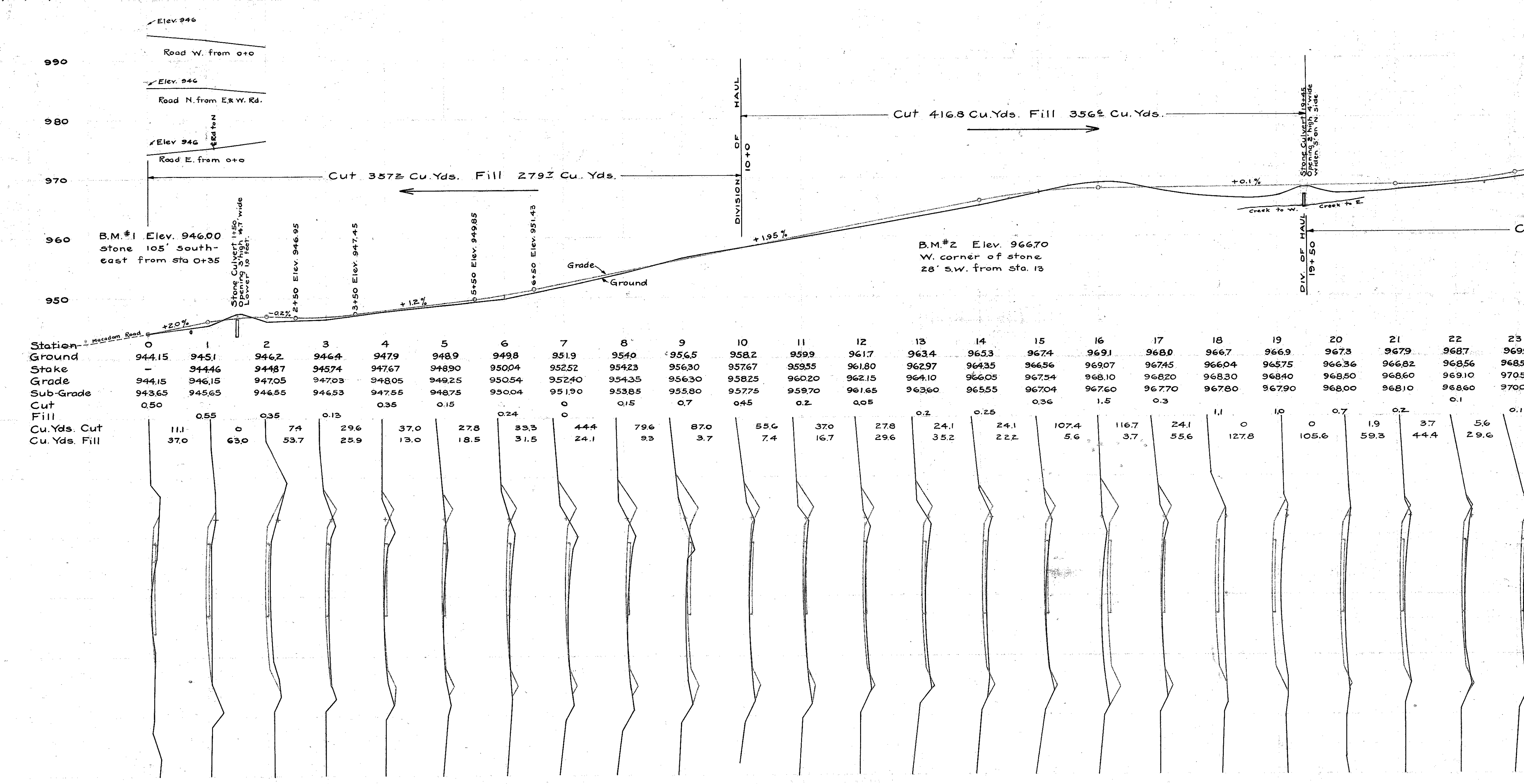
Datum: Assumed as elevation 946.0 on stone near sta. 110 described under B.M.#1. Elevation taken from Geological Survey Map.



SR 86
 0.00 - 1.28±
 000120



DETAIL SECTION
 Scale 1/4"=1'



File # 31

Table 10
 H-61 LAKE - Weeds Corner Road
 1912