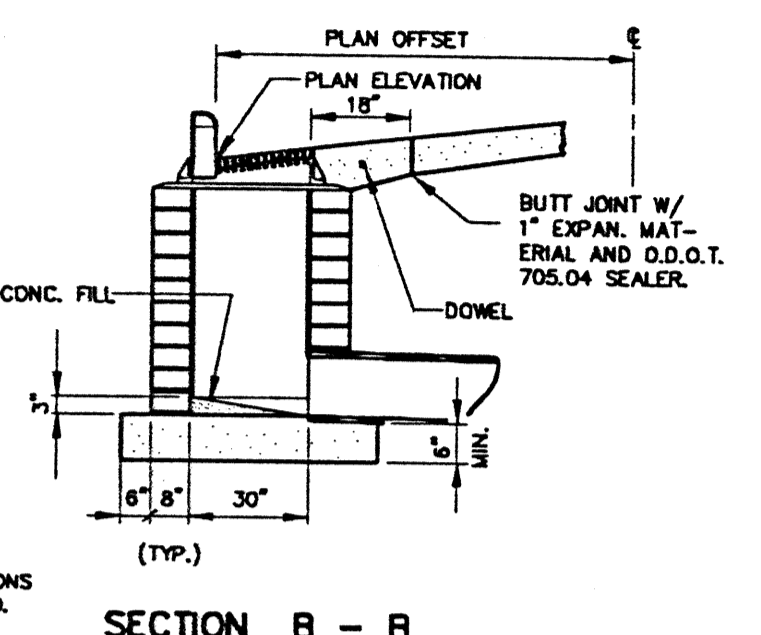
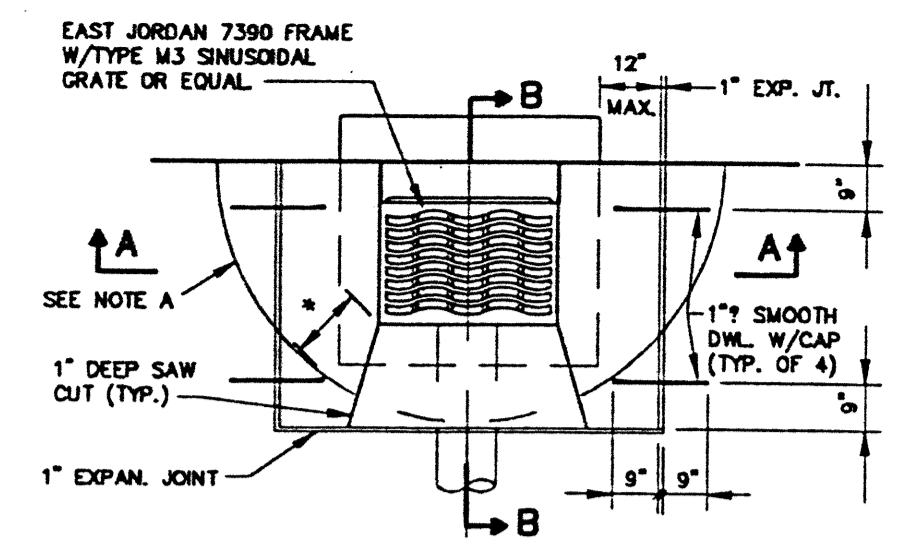


NOTE A
ALTERNATE INLET BOX-OUT TO BE USED WHERE RECTANGULAR BOX-OUT DOES NOT FIT PAVEMENT JOINT PATTERN OR WHERE DIRECTED BY ENGINEER. JOINT TO BE A SMOOTH BUTT JOINT WITH 1\"/>

GENERAL NOTES:
1.) ALL WORK TO CONFORM TO O.D.O.T. ITEM 604.
2.) ALL BRICK SHALL BE CLAY OR SHALE BRICK CONFORMING TO O.D.O.T. ITEM 704.01 (A.S.T.M. C32), UNLESS APPROVED IN WRITING BY THE ENGINEER.
3.) IF PRECAST UNITS ARE USED, THE CONTRACTOR SHALL PROVIDE SHOP DRAWINGS TO THE ENGINEER FOR APPROVAL. PRECAST UNITS SHALL CONFORM TO O.D.O.T. ITEM 706.13.
4.) PAVEMENT CONCRETE WITHIN BOXOUT SHALL CONFORM TO O.D.O.T. 499, CLASS S 5000 P.S.I. WITH RETARDER. CONCRETE FOR BASE SHALL BE 4000 P.S.I.
5.) THE ENTIRE AREA AROUND THE BASIN SHALL BE BACKFILLED WITH O.D.O.T. ITEM 310.02, MECHANICALLY COMPACTED IN 4\"/>

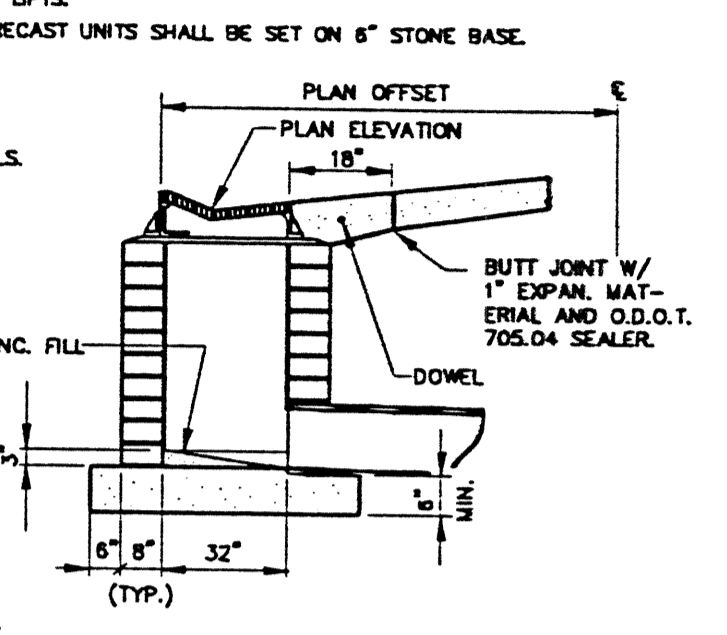
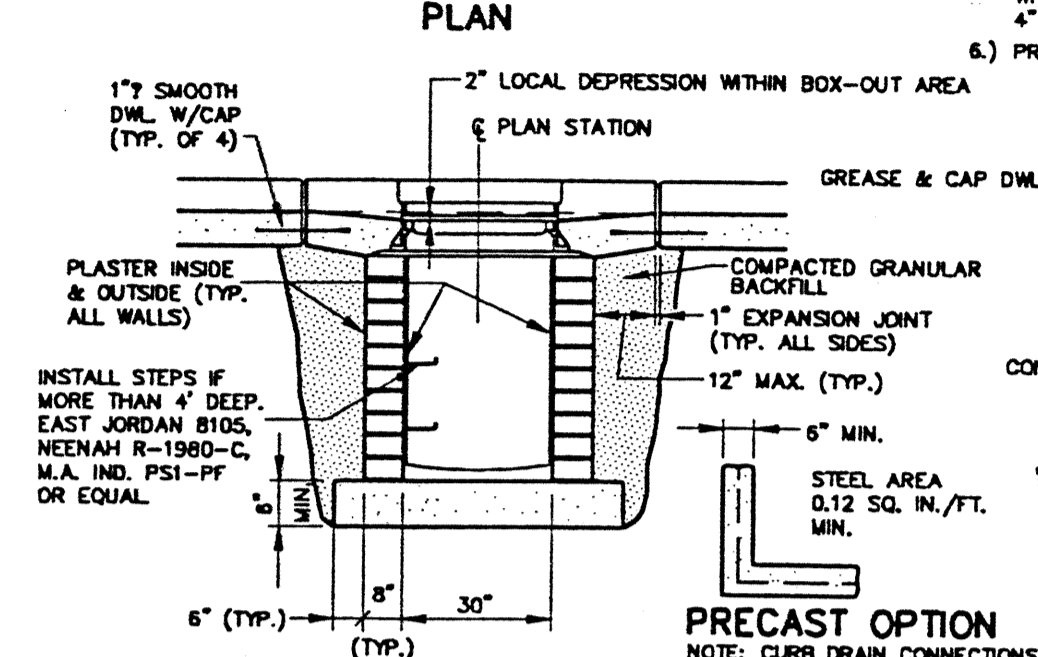


CURB INLET BASIN TYPE A

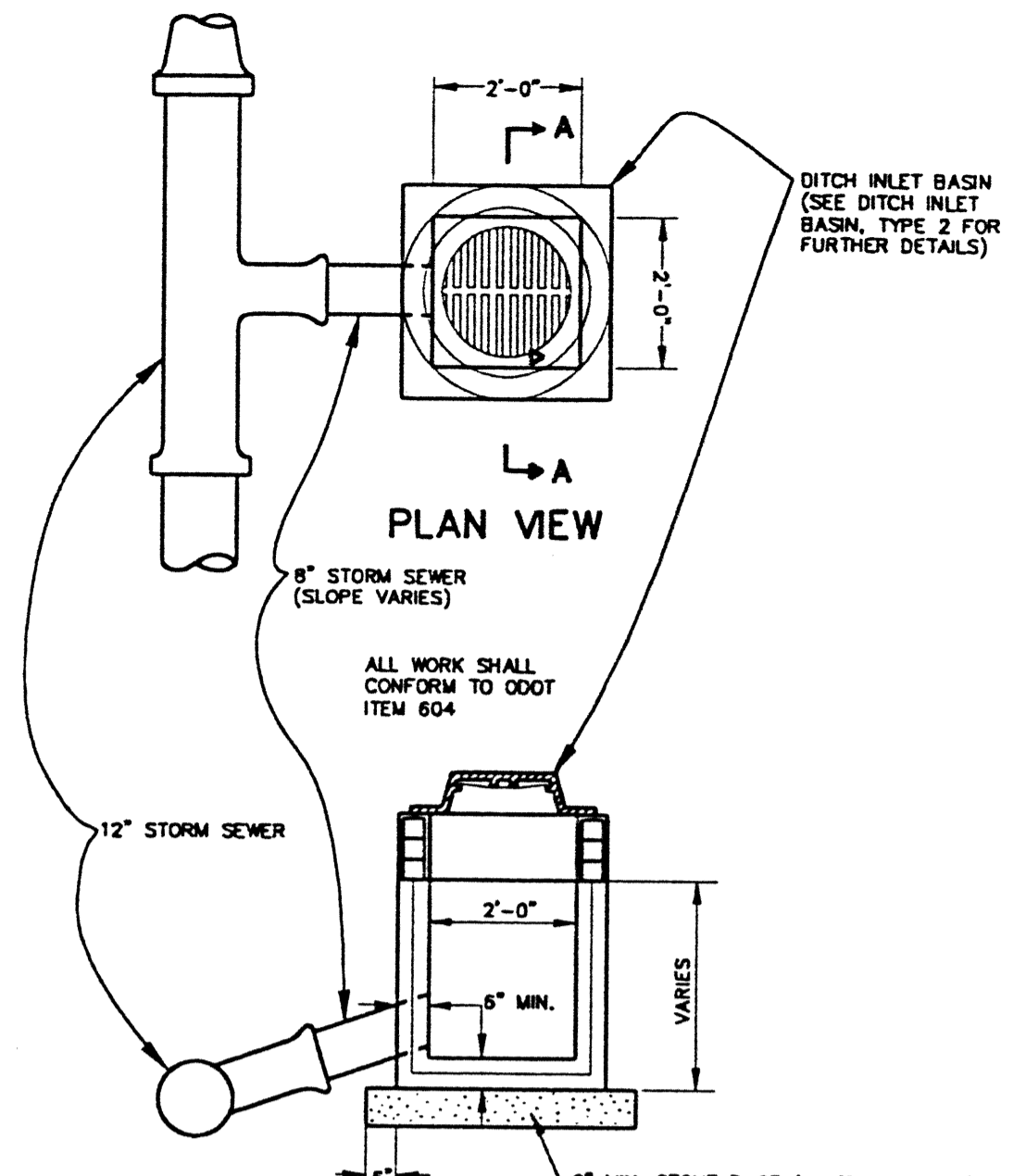


NOTE A
ALTERNATE INLET BOX-OUT TO BE USED WHERE RECTANGULAR BOX-OUT DOES NOT FIT PAVEMENT JOINT PATTERN OR WHERE DIRECTED BY ENGINEER. JOINT TO BE A SMOOTH BUTT JOINT WITH 1\"/>

GENERAL NOTES:
1.) ALL WORK TO CONFORM TO O.D.O.T. ITEM 604.
2.) ALL BRICK SHALL BE CLAY OR SHALE BRICK CONFORMING TO O.D.O.T. ITEM 704.01 (A.S.T.M. C32), UNLESS APPROVED IN WRITING BY THE ENGINEER.
3.) IF PRECAST UNITS ARE USED, THE CONTRACTOR SHALL PROVIDE SHOP DRAWINGS TO THE ENGINEER FOR APPROVAL. PRECAST UNITS SHALL CONFORM TO O.D.O.T. ITEM 706.13.
4.) PAVEMENT CONCRETE WITHIN BOXOUT SHALL CONFORM TO O.D.O.T. 499, CLASS S 5000 P.S.I. WITH RETARDER. CONCRETE FOR BASE SHALL BE 4000 P.S.I.
5.) THE ENTIRE AREA AROUND THE BASIN SHALL BE BACKFILLED WITH O.D.O.T. ITEM 304, MECHANICALLY COMPACTED IN 4\"/>



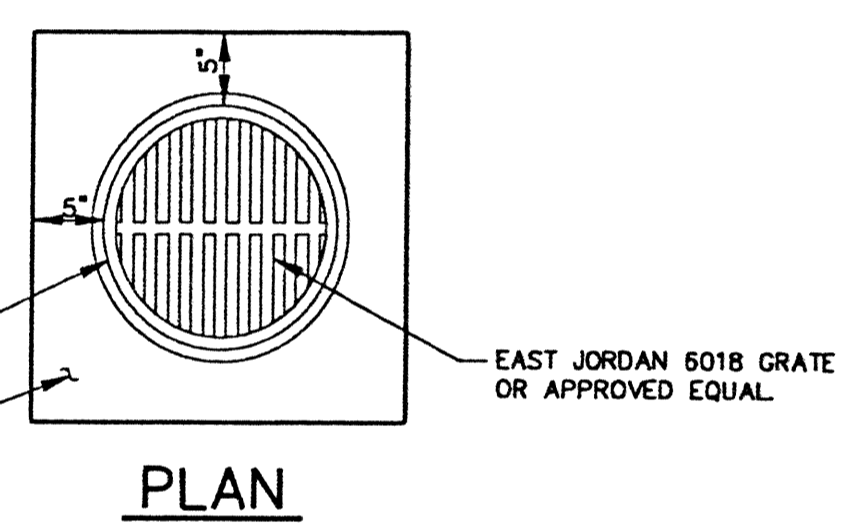
CURB INLET BASIN TYPE B



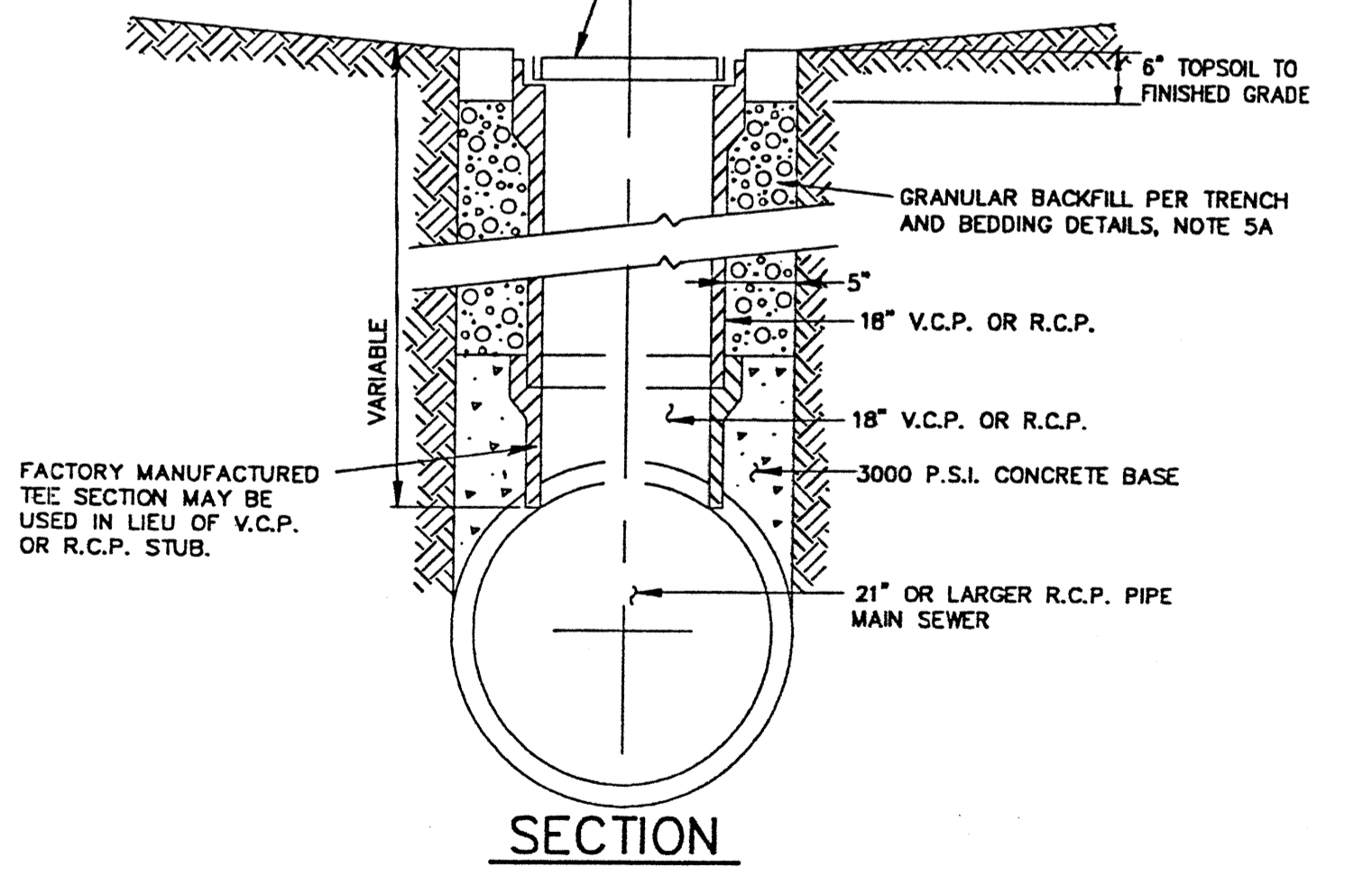
CONNECT 8\"/>

DITCH INLET BASIN TYPE 3

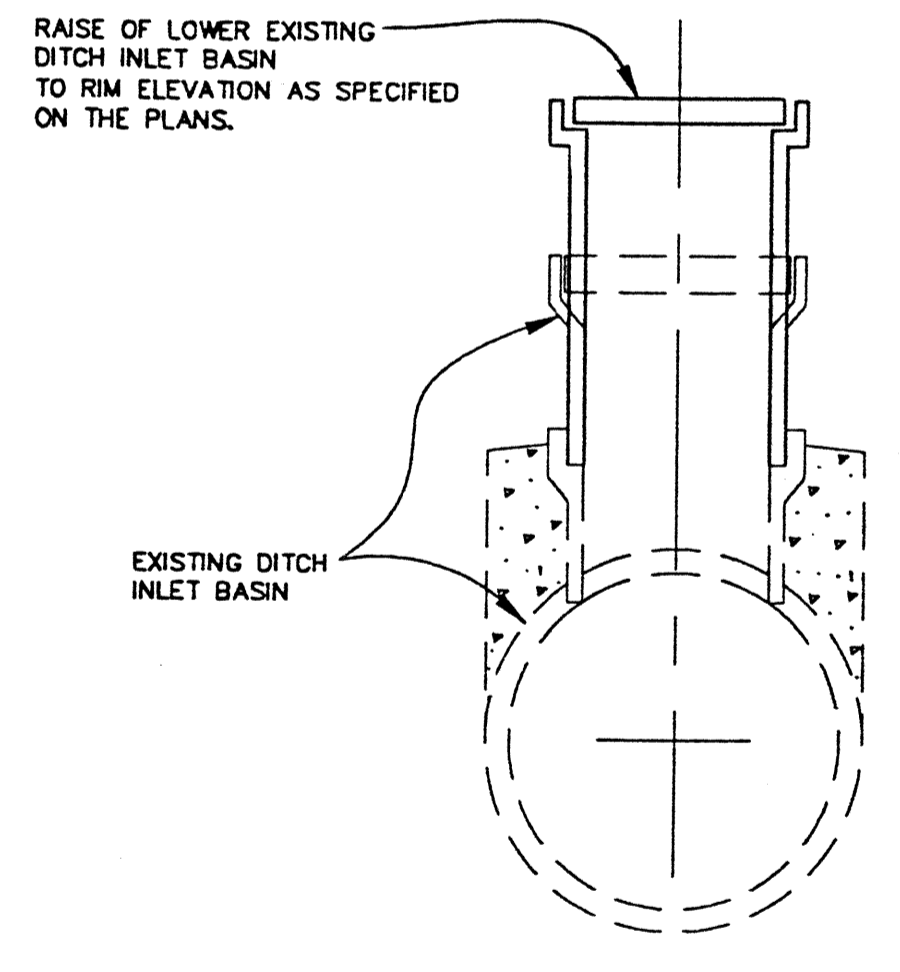
NOTE: THE COST OF THE NEW 8\"/>



RIM ELEVATION TO BE SET AS SHOWN ON THE PLANS. IN THE EVENT THAT FIELD CONDITIONS WARRANT A RIM ADJUSTMENT AS DETERMINED BY THE ENGINEER OR THE CITY OF MENTOR, THE RIM ELEVATION SHALL BE MODIFIED ACCORDINGLY AT NO ADDITIONAL COST TO THE CITY OF MENTOR.

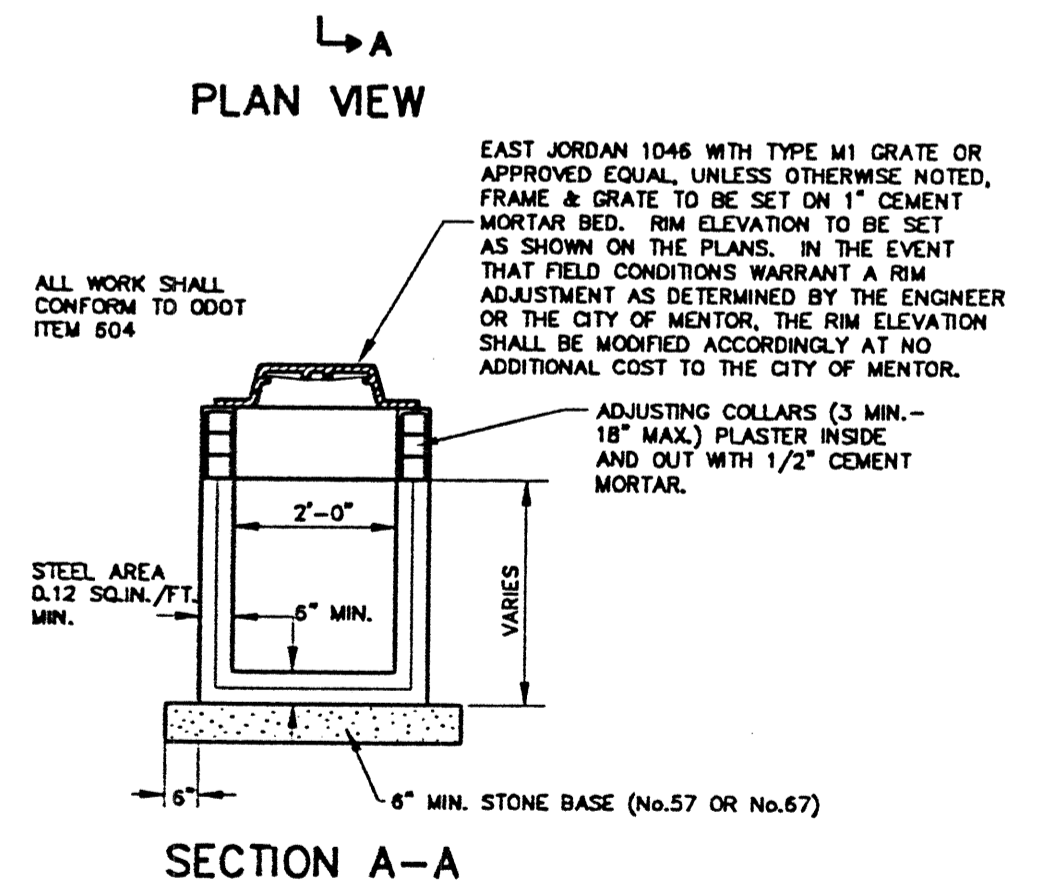
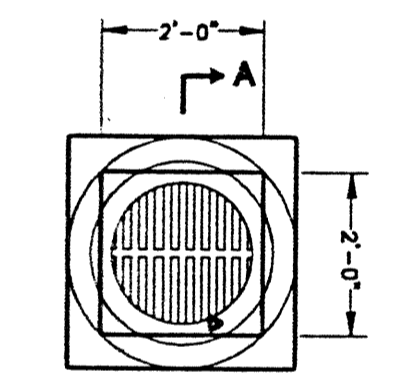


DITCH INLET BASIN TYPE 1

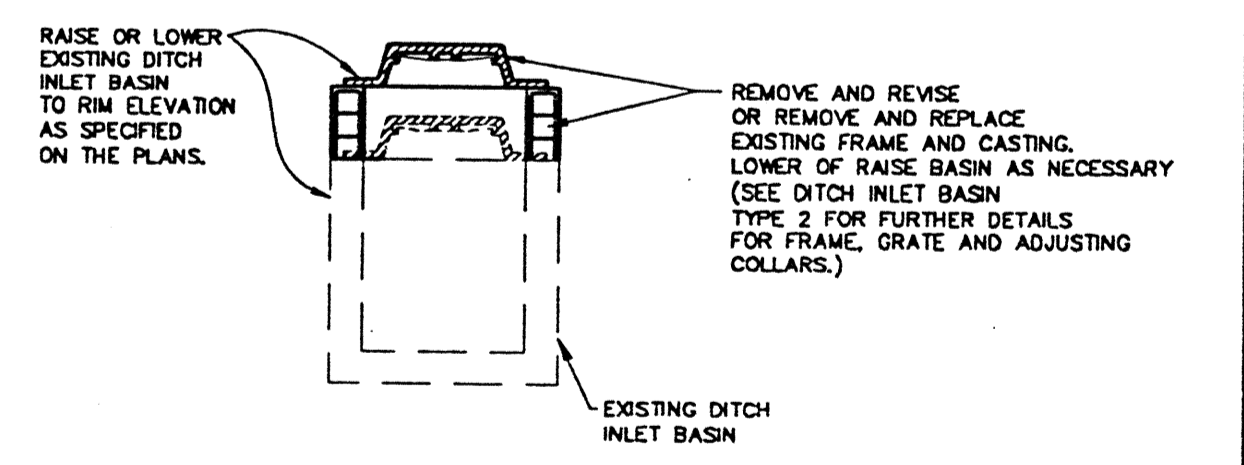


EXISTING DITCH INLET BASIN RECONSTRUCTED TO GRADE -TYPE 1

REMOVE AND REVISE OR REMOVE AND REPLACE EXISTING FRAME, CASTING AND STORM SEWER PIPE. LOWER OR RAISE BASIN AS NECESSARY. (SEE DITCH INLET BASIN TYPE 1 FOR FURTHER DETAILS FOR FRAME AND GRATE.)



DITCH INLET BASIN TYPE 2



EXISTING DITCH INLET BASIN RECONSTRUCTED TO GRADE - TYPE 2

H:\2000_00123.DWG\00123D002.DWG - PLOT SCALE = 1:20

CT Consultants
Engineers • Architects • Planners

REV. NO.	DESCRIPTION	DATE	BY	CHK'D.

**STATE ROUTE 84
INTERIM WIDENING & RESURFACING
IMPROVEMENTS**
CITY OF MENTOR, LAKE COUNTY, OHIO

DATE: MARCH, 2000
DRAWN BY: J.L.
CHECKED BY: C.C.H.
APPROVED BY: C.C.H.
F.B. No. — PG. —

MISCELLANEOUS DETAILS

SCALE	
HOR.	1" = 20'
VERT.	1" = 5'
CONTRACT No.	
00123	
SHEET NO.	OF
62	74