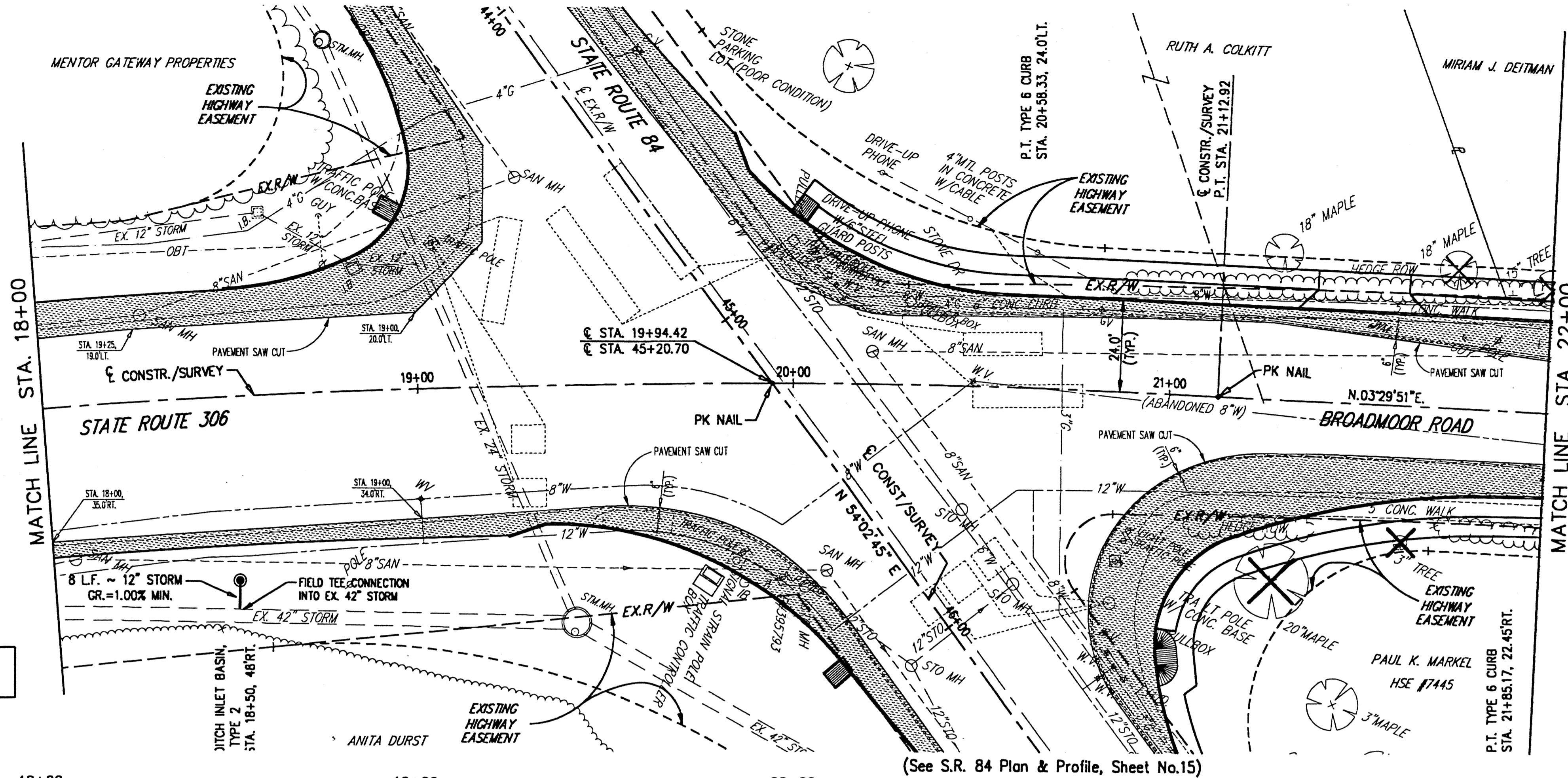
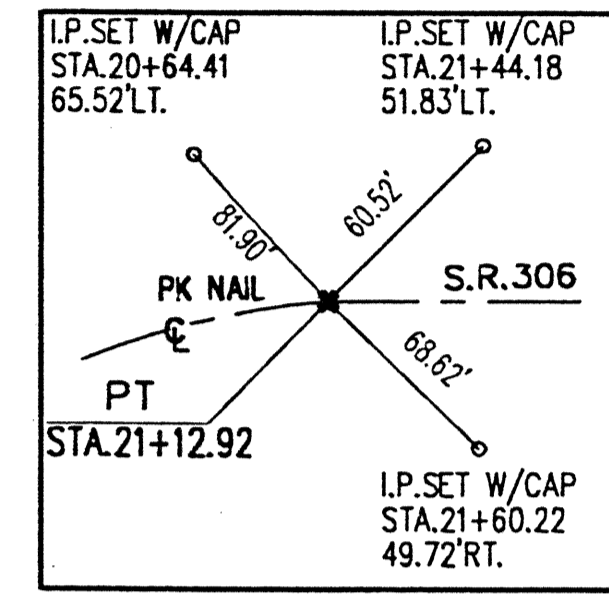
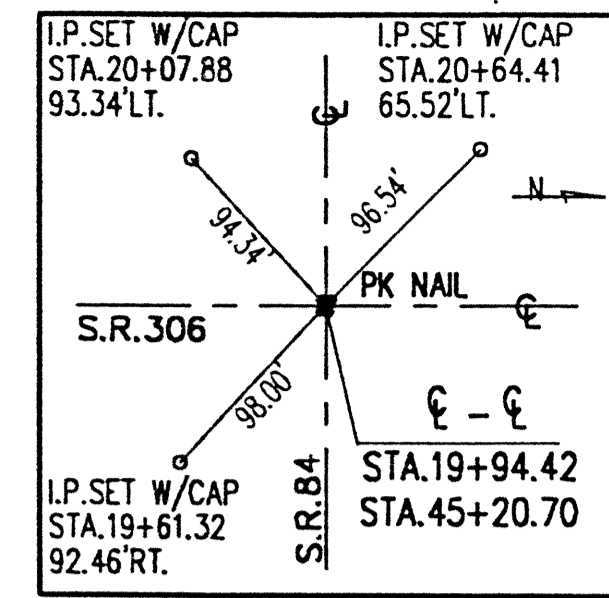


STATE ROUTE 306  
 & SURVEY CURVE DATA  
 P.C. STA. 14+40.00  
 P.T. STA. 21+12.92  
 R = 2500.00'  
 D<sub>c</sub> = 02°17'31"  
 Δ = 15°25'20"  
 L = 672.92'  
 T = 338.51'  
 C = 670.89'  
 CB = N.04°12'49"W.

(See S.R. 84 Plan & Profile, Sheet No. 15)



NOTE: FOR INTERSECTION GRADING AND GEOMETRIC DETAILS, SEE SHEET NO. 48



BENCH MARK #1  
 TOP S.E. CORNER CONC. PORCH  
 HSE #7445  
 STA. 47+15± LT. (S.R. 84)  
 ELEV. 711.48

DENOTES ASPHALT PAVEMENT WIDENING

Station	Profile Description	Profile Data
18+00	EXISTING & GRADE	715
18+00	EX. 42" STORM	705
18+00	EX. 8" SAN	700
18+00	8 L.F. ~ 12" STORM FIELD TEE CONNECTION INTO EX. 42" STORM	700
18+00	EX. SAN. MH. STA. 18+05.8, 39.9 RT.	695
18+00	DITCH INLET BASIN, TYPE 2 STA. 18+50, 48 RT.	690
18+00	711.28	690
19+00	710.94	690
19+00	710.80	690
19+00	EX. 16" MH. STA. 19+87.1, 52 RT.	695
19+00	EX. MANHOLE NO. 3 STA. 19+41.67, 60.77 RT.	690
19+00	42" INV. 704.19 S	690
19+00	24" INV. 704.26 SW	690
19+00	12" INV. 703.10 NW	690
20+00	710.79	690
20+00	EX. SAN. MH. STA. 20+09.3, 48 RT.	695
20+00	EX. SAN. MH. STA. 20+21.2, 8.5 L.	695
20+00	EX. STO. MH. STA. 20+03.6, 53 RT.	690
20+00	2" E&W 705.96	690
20+00	8" S. 707.44	690
20+00	710.24	690
21+00	709.83	690
21+00	709.00	690
22+00	708.04	690

H:\2000\00123\DWG\306PP4.DWG - PLOT SCALE = 1:20



REV. NO.	DESCRIPTION	DATE	BY	CHK'D.

**STATE ROUTE 84**  
**INTERIM WIDENING & RESURFACING**  
**IMPROVEMENTS**  
 CITY OF MENTOR, LAKE COUNTY, OHIO

DATE: MARCH, 2000  
 DRAWN BY: J.J.C.  
 CHECKED BY: C.C.H.  
 APPROVED BY: C.C.H.  
 F.B. No. PG.

**S.R. 306 - PLAN AND PROFILE**  
**STA. 18+00 TO STA. 22+00**

SCALE  
 HOR. 1" = 20'  
 VERT. 1" = 5'  
 CONTRACT No.  
**00123**  
 SHEET NO. OF  
**41 74**