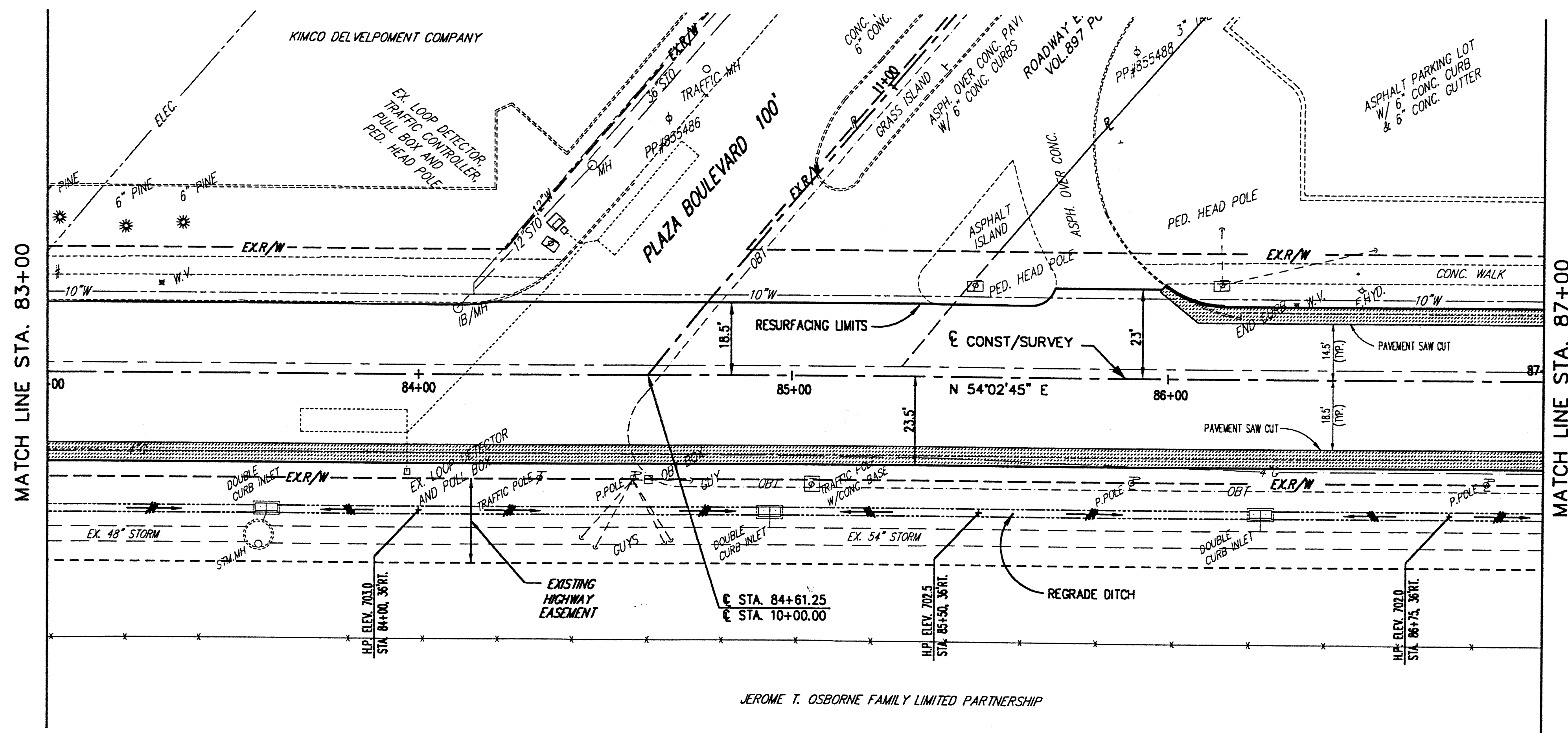
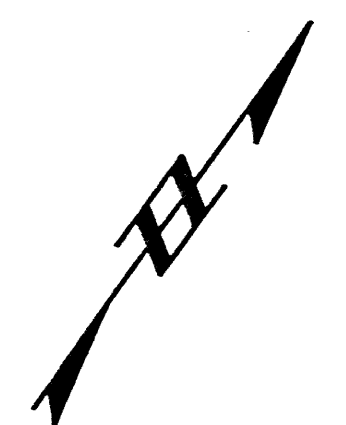


H:\2000\00123\DWG\84P16.DWG - PLOT SCALE = 1:20



BENCH MARK #5
TOP CHISELED ON TOP S.END
CONC. BASE OF LIGHT POLE
STA. 87+04±LT.
ELEV. 700.96



■ DENOTES ASPHALT
PAVEMENT WIDENING

| | 83+00 | 84+00 | 85+00 | 86+00 | 87+00 |
|------------------------|--------|---|--|---------------|--------|
| 710 | | | | | |
| 705 | | | | | |
| 700 | | | | | |
| 695 | | | | | |
| 690 | | EX. 48" STORM | | EX. 54" STORM | |
| 685 | | EX. STORM MANHOLE STA. 84+57.2 - 45.3 RT. RIM 702.91 48" INV. 691.04 SW 54" INV. 690.54 NE 12" INV. 691.24 NW 6" INV. 694.54 SE | EX. STO. 1B STA. 84+10.5, 17.5 LT. RIM 703.64 12" N. 700.64 | | |
| 680 | | | | | |
| EXISTING PROFILE GRADE | 704.34 | 704.19 | 704.08 | 703.94 | 703.81 |
| | 83+00 | 84+00 | 85+00 | 86+00 | 87+00 |



| REV. NO. | DESCRIPTION | DATE | BY | CHK'D. |
|----------|-------------|------|----|--------|
| | | | | |

STATE ROUTE 84
INTERIM WIDENING & RESURFACING
IMPROVEMENTS
CITY OF MENTOR, LAKE COUNTY, OHIO

DATE: MARCH, 2000
DRAWN BY: J.J.C.
CHECKED BY: C.C.H.
APPROVED BY: C.C.H.
F.B. No. — PG. —

S.R. 84 - PLAN AND PROFILE
STA. 83+00 TO STA. 87+00

| SCALE | |
|---------------|---------------|
| HOR. 1" = 20' | VERT. 1" = 5' |
| CONTRACT No. | |
| 00123 | |
| SHEET NO. | OF |
| 26 | 74 |