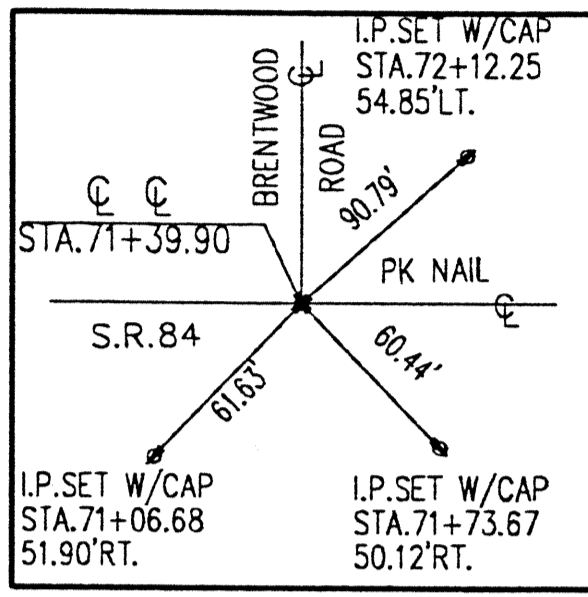
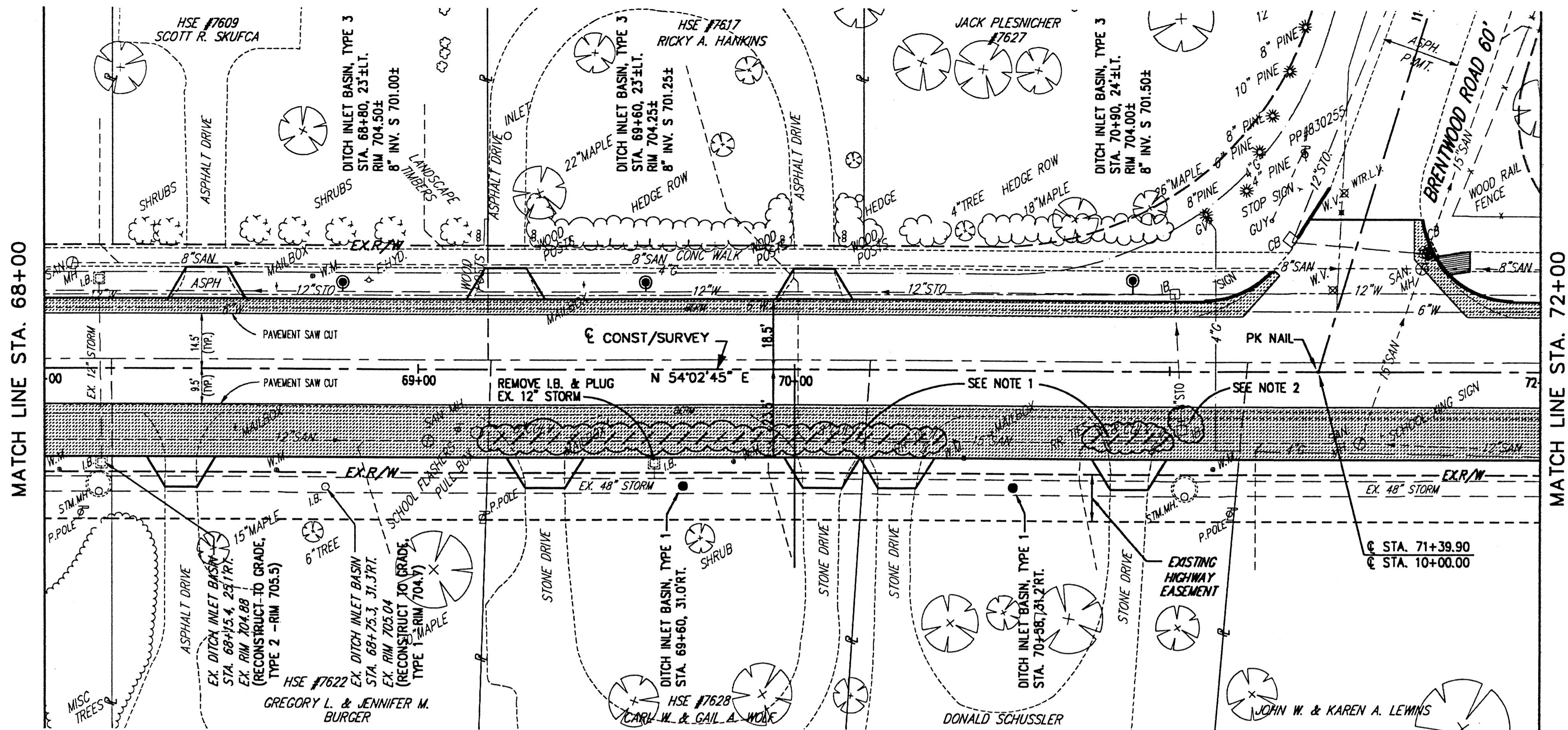


NOTE: FOR INTERSECTION GRADING AND GEOMETRIC DETAILS, SEE SHEET NO. 50

NOTE 1: REMOVE EXISTING 8" DRIVE CULVERTS

NOTE 2: REMOVE EXISTING INLET BASIN AND PLUG EXIST. 8" STORM TO NORTH.



	68+00	69+00	70+00	71+00	72+00
710					
705					
700					
695					
690					
685					
680					
EXISTING PROFILE GRADE	706.00	705.87	705.64	705.35	705.09



REV. NO.	DESCRIPTION	DATE	BY	CHK'D.

**STATE ROUTE 84
INTERIM WIDENING & RESURFACING
IMPROVEMENTS**
CITY OF MENTOR, LAKE COUNTY, OHIO

DATE: MARCH, 2000
DRAWN BY: J.J.C.
CHECKED BY: C.C.H.
APPROVED BY: C.C.H.
F.B. No. PG.

**S.R. 84 - PLAN AND PROFILE
STA. 68+00 TO STA. 72+00**

SCALE	
HOR. 1" = 20'	
VERT. 1" = 5'	
CONTRACT No.	
00123	
SHEET No.	OF
22	74

H:\2000\00123\DWG\84P12.DWG - PLOT SCALE = 1:20