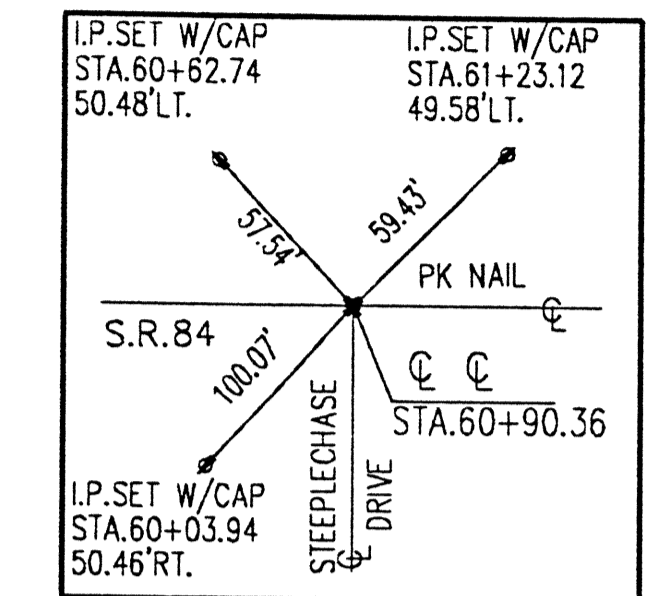
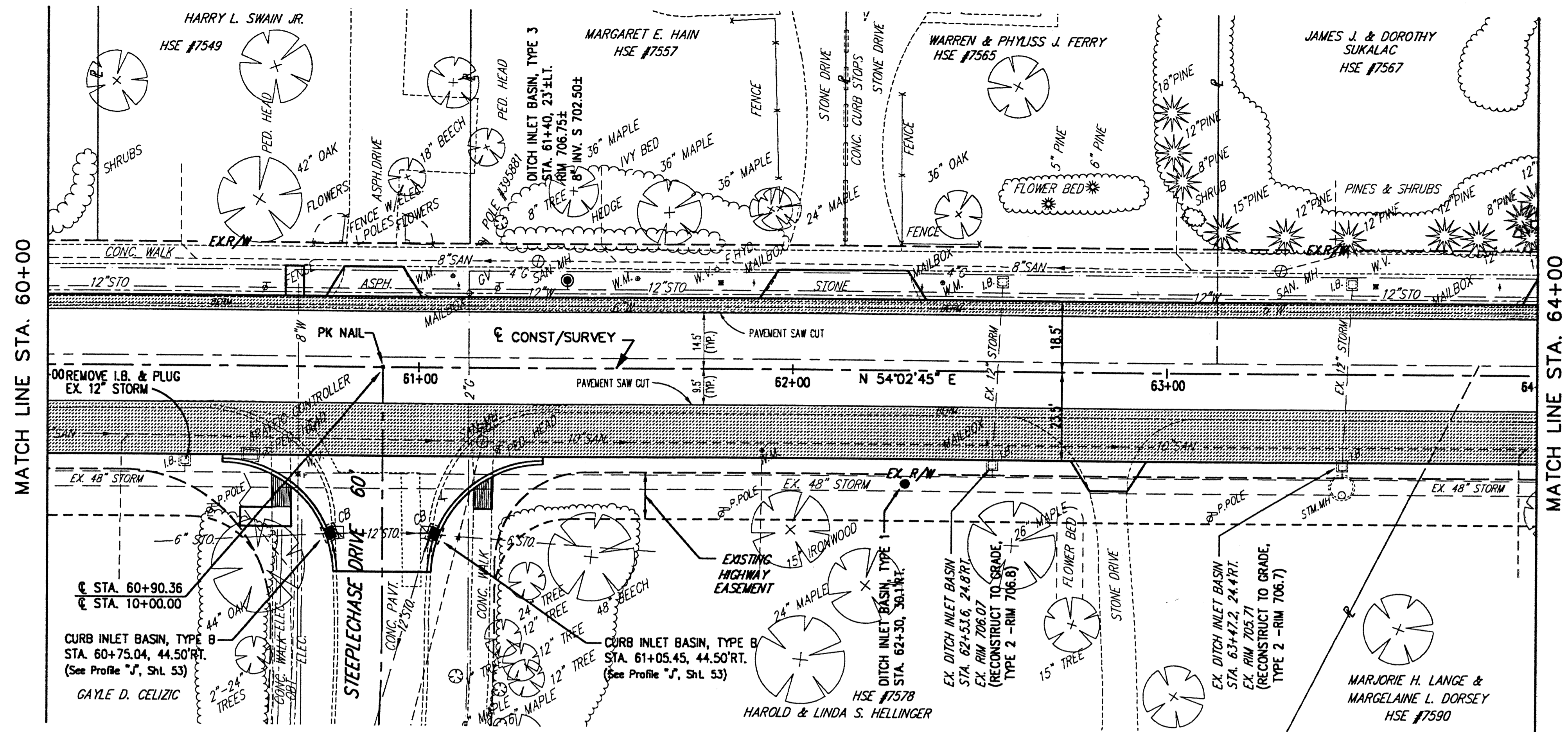


NOTE: FOR INTERSECTION GRADING AND GEOMETRIC DETAILS, SEE SHEET NO. 49



DENOTES ASPHALT PAVEMENT WIDENING

	60+00	61+00	62+00	63+00	64+00
710			EXISTING G & GRADE		710
705					705
700	MATCH LINE STA. 60+00	EX. 2" GAS	EX. 48" STORM	EX. 8" SAN.	EX. 48" STORM
695		EX. 8" SAN.	EX. 10" SAN		
690		EX. SAN. MH. STA. 61+17, 19.5' RT. RIM 707.61 10' NE. 694.66 8' SW. 694.99 8' S. 695.91	EX. SAN. MH. STA. 61+32, 28' LT. RIM 707.48 8' NE. 697.48 8' SW. 697.43	EX. SAN. MH. STA. 63+30.5, 27' LT. RIM 706.78 2' SW. 698.13 6' N. 699.98	MATCH LINE STA. 64+00
685			DITCH INLET BASIN, TYPE 1 STA. 62+30, 30' RT. RIM 705.7	EX. STORM MANHOLE STA. 63+47.1, 32' RT. EX. RIM 706.10 48" INV. 696.90 NE & SW 12" INV. 703.37 NW (ADJUST TO GRADE, -RIM 705.8)	
680	EXISTING PROFILE GRADE	707.84	707.72	707.58	707.41
	60+00	61+00	62+00	63+00	64+00

H:\2000\00123\DWG\B4PPT10.DWG - PLOT SCALE = 1:20

**CT Consultants**  
Engineers • Architects • Planners

REV. NO.	DESCRIPTION	DATE	BY	CHK'D.

**STATE ROUTE 84**  
**INTERIM WIDENING & RESURFACING**  
**IMPROVEMENTS**  
CITY OF MENTOR, LAKE COUNTY, OHIO

DATE: MARCH, 2000  
DRAWN BY: J.J.C.  
CHECKED BY: C.C.H.  
APPROVED BY: C.C.H.  
F.B. No. \_\_\_\_\_ PG. \_\_\_\_\_

**S.R. 84 - PLAN AND PROFILE**  
**STA. 60+00 TO STA. 64+00**

SCALE	
HOR. 1" = 20'	
VERT. 1" = 5'	
CONTRACT No.	
00123	
SHEET NO.	OF
20	74