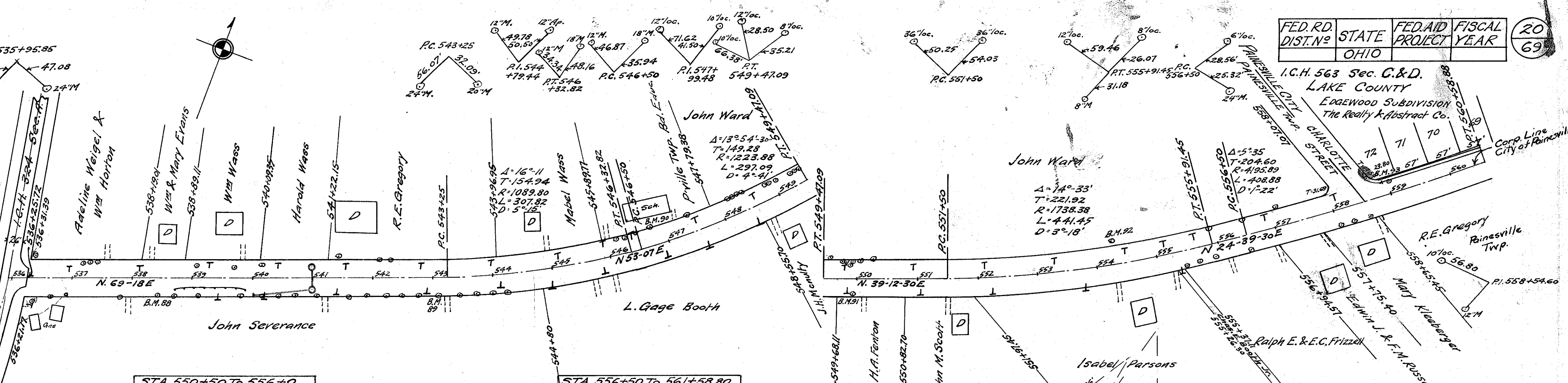


STA. 542+25 TO 550+47.09									
LEFT	CENTER LINE			RIGHT	Extra Form				
From	EL. EDGE	W	STATION	GRADE	DEFLEC.	W	EL. EDGE	add'l to line	across forms
0.17	714.47	10	542+25	714.64		10	714.47	0	
"	714.55	1007	542+50	714.72		"	714.75	0.2	
"	714.71	1061	543+0	714.88		"	715.31	0.6	.02
"	714.79	1115	543+25	714.96	0-00	"	715.59	0.8	.04
"	713.86	1173	543+50	714.03	0-39-26	"	714.86	1.00	.05
"	715.02	1200	544+0	715.19	1-58-18	"	716.20	1.18	.06
"	715.17	"	544+50	715.34	3-17-10	"	716.35	"	"
"	715.33	"	545+0	715.50	4-36-02	"	716.51	"	"
"	715.48	"	545+50	715.65	5-54-54	"	716.66	"	"
"	715.64	"	546+0	715.81	7-13-46	"	716.82	"	"
"	715.74	"	546+50	715.91	8-05-30	"	716.92	"	"
"	715.79	"	547+0	715.96	0-00	"	716.97	"	"
"	715.95	"	547+50	716.12	1-10-13	"	717.13	"	"
"	716.10	"	547+50	716.27	2-20-26	"	717.28	"	"
"	716.13	"	548+0	716.30	3-30-40	"	717.31	"	"
"	715.90	"	548+50	716.07	4-40-53	"	717.08	"	"
"	715.55	120	549+0	715.72	5-51-06	"	716.73	1.18	.06
"	715.22	1115	549+50	715.39	6-57-15	"	716.02	0.8	.04
"	715.20	1110	549+50	715.37	"	"	715.98	0.78	.04
"	714.85	1025	550+0	715.02	"	"	715.25	0.4	.01
0.17	714.52	10	550+47.09	714.69		10	714.52	0	

142 sq. yds. extra pav.

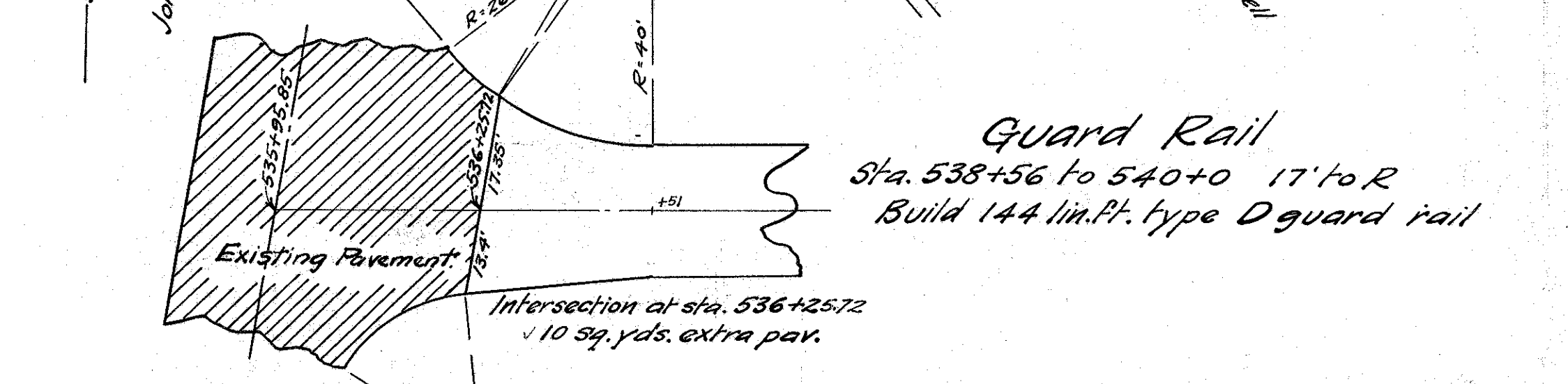


STA. 550+50 TO 556+0									
LEFT	CENTER LINE			RIGHT	Extra Form				
From	EL. EDGE	W	STATION	GRADE	DEFLEC.	W	EL. EDGE	add'l to line	across forms
0.17	714.50	10	550+50	714.67		10	714.50	0.00	
"	714.15	"	551+0	714.32		"	714.40	0.25	
"	713.88	"	551+50	714.05	0-00	"	714.38	0.50	
"	713.61	"	552+0	713.78	0-49-26	"	714.33	0.72	
"	713.34	"	552+50	713.51	1-38-53	"	714.06	"	
"	713.07	"	553+0	713.24	2-28-19	"	713.79	"	
"	712.80	"	553+50	712.97	3-17-46	"	713.52	"	
"	712.53	"	554+0	712.70	4-07-12	"	713.25	"	
"	712.26	"	554+50	712.43	4-56-38	"	712.98	"	
"	711.99	"	555+0	712.16	5-46-04	"	712.71	"	
"	711.70	"	555+50	711.89	6-35-31	"	712.44	0.72	
"	711.50	"	556+0	711.67	7-16-20	"	712.00	0.50	
0.17	711.45	10	556+0	711.62		10	711.33	0.48	

No extra pav.

STA. 556+50 TO 561+58.80									
LEFT	CENTER LINE			RIGHT	Extra Form				
From	EL. EDGE	W	STATION	GRADE	DEFLEC.	W	EL. EDGE	add'l to line	across forms
0.17	711.18	10	556+50	711.35	0-00	10	711.62	0.47	
"	710.91	"	557+0	711.08	0-20-29	"	711.35	"	
"	710.64	"	557+50	710.81	0-40-58	"	711.08	"	
"	710.37	"	558+0	710.54	1-01-26	"	710.81	"	
"	710.10	"	558+50	710.27	1-21-55	"	710.54	"	
"	709.83	"	559+0	710.00	1-42-24	"	710.27	"	
"	709.56	"	559+50	709.73	2-02-53	"	709.99	0.44	
"	709.29	"	560+0	709.46	2-23-27	"	709.70	0.44	
"	709.02	"	560+50	709.19	2-43-50	"	709.43	0.33	
"	708.75	"	561+0	708.92	2-47-30	"	709.16	0.30	
"	708.48	"	561+50	708.65		"	708.89	0.18	
0.17	708.21	10	561+58.80	708.29		10	708.12	0.00	

No extra pav.



Sta. 540+  
Build 12"x34" dia. V.P. (conc.) cur.  
I.B. on R of L

From 531+56.51 to 536+25.72 Deduct:  
469.21 lin. ft.  
1042.7 sq. yds.

Sta. 540+0 28' to R to 541+0 18' to R  
Lay 100'-12" V.P. sewer 14w.

B.M. # 88 Sta. 538+42  
Spike in root 20" M.  
25' to right of  $\Phi$   
Elev. = 715.44

B.M. # 89 Sta. 543+07  
Spike in root 24" M.  
24' to right of  $\Phi$   
Elev. = 715.11

B.M. # 90 Sta. 546+72  
Spike in root of 24" M.  
27' to L of  $\Phi$   
Elev. = 716.51

B.M. # 91 Sta. 549+85  
Spike in root 40" black oak  
22' to R of  $\Phi$   
Elev. = 716.85

B.M. # 92 Sta. 554+30  
Spike in root 40" locust  
35' to left of  $\Phi$   
Elev. = 713.80

B.M. # 93 Sta. 558+94  
Cross in sidewalk at  
beginning of tangent 21' to  
left of  $\Phi$  Elev. 710.33

Guard Rail  
Sta. 538+56 to 540+0 17' to R  
Build 144 lin. ft. type D guard rail

Intersection at sta. 536+25.72  
10 sq. yds. extra pav.

