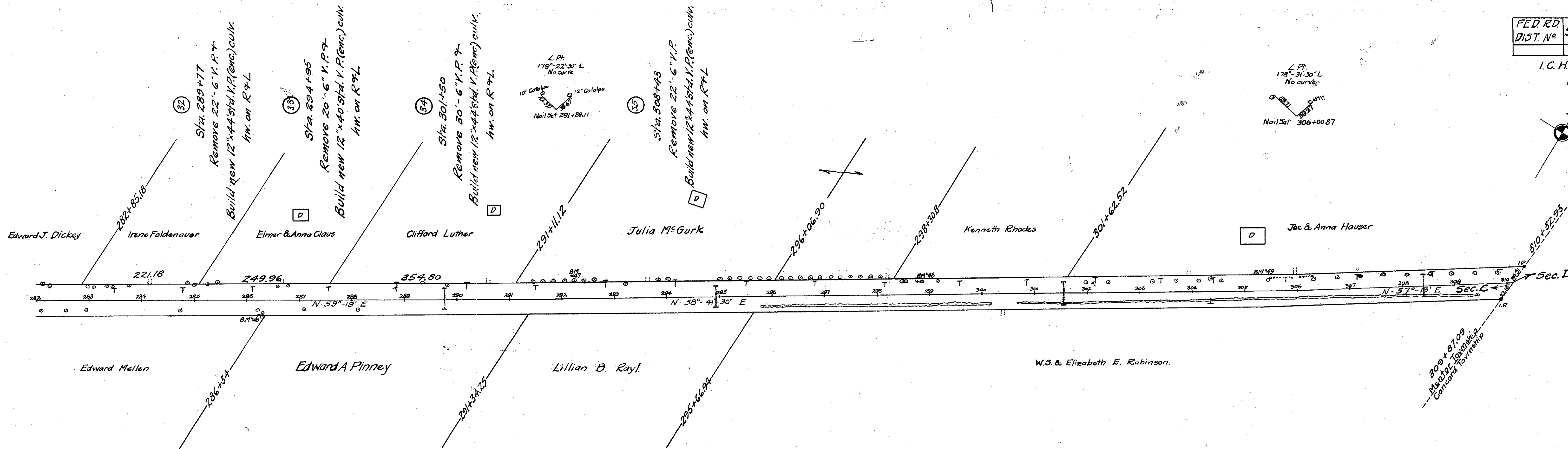


FED. RD. DIST. No.	STATE	FED. AID PROJECT	FISCAL YEAR	12 69
	OHIO			

I.C.H. No 563 SEC C.R.D.  
LAKE COUNTY



B.M. #46 Sta. 286+30  
Spike root 12" Maple  
26' to right of  $\pm$   
Elev. = 788.69

B.M. #47 Sta. 292+24  
Spike foot 10" Sycamore  
36' to left of  $\pm$   
Elev. = 790.25

Note: Grade line shown is  
crown of finished pavement

B.M. #48 Sta. 298+86  
Spike rear 6" Maple  
24' to left of  $\pm$   
Elev. = 790.58

B.M. #49 Sta. 305+46  
Spike front 10" Maple  
20.5' to left of  $\pm$   
Elev. = 789.49

