

MICROFILMED  
OCT 21 1985

OCT 21 1985

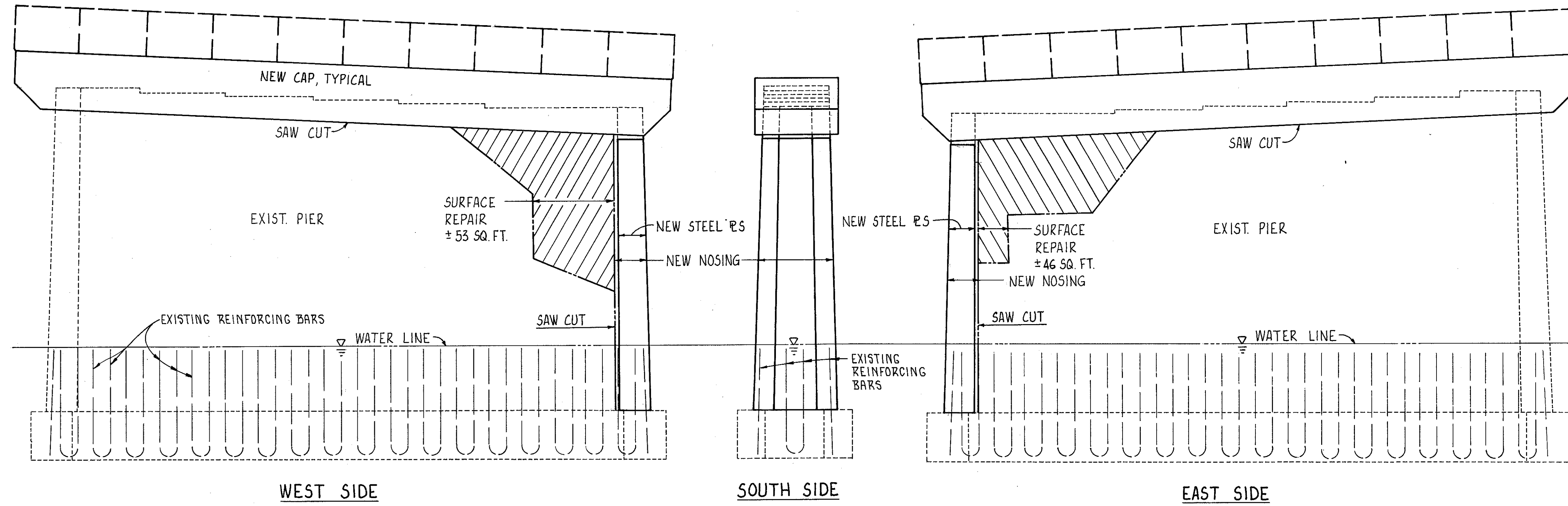
NOTE:  
SHADED AREAS INDICATE APPROXIMATE LOCATION OF AREAS OF REPAIR.  
ACTUAL LOCATIONS, SIZE AND DEPTH TO BE DETERMINED BY THE  
ENGINEER IN THE FIELD.

CONCRETE PATCHES: ONLY STRUCTURAL PATCHES SHALL BE MADE AS DIRECTED BY  
THE ENGINEER. (EXPOSING PRIMARY REINFORCING STEEL AFTER REMOVAL OF UNSOUND  
CONCRETE AND SINCE THE TOP 2/3 OF THE PIER SHAFT IS UNREINFORCED ALSO AREAS  
WHERE CONCRETE DETERIORATION IS THREATENING THE STRUCTURAL INTEGRITY OF  
THE PIER). SURFACE PREPARATION SHALL INCLUDE SANDBLASTING OF ALL REINFORCING  
STEEL AND CONCRETE TO BE PATCHED (STEEL CLEANED TO SA-1 QUALITY). PAYMENT  
SHALL INCLUDE ALL WORK, INCLUDING SANDBLASTING, NECESSARY TO COMPLY WITH  
ITEMS 519 OR 520.

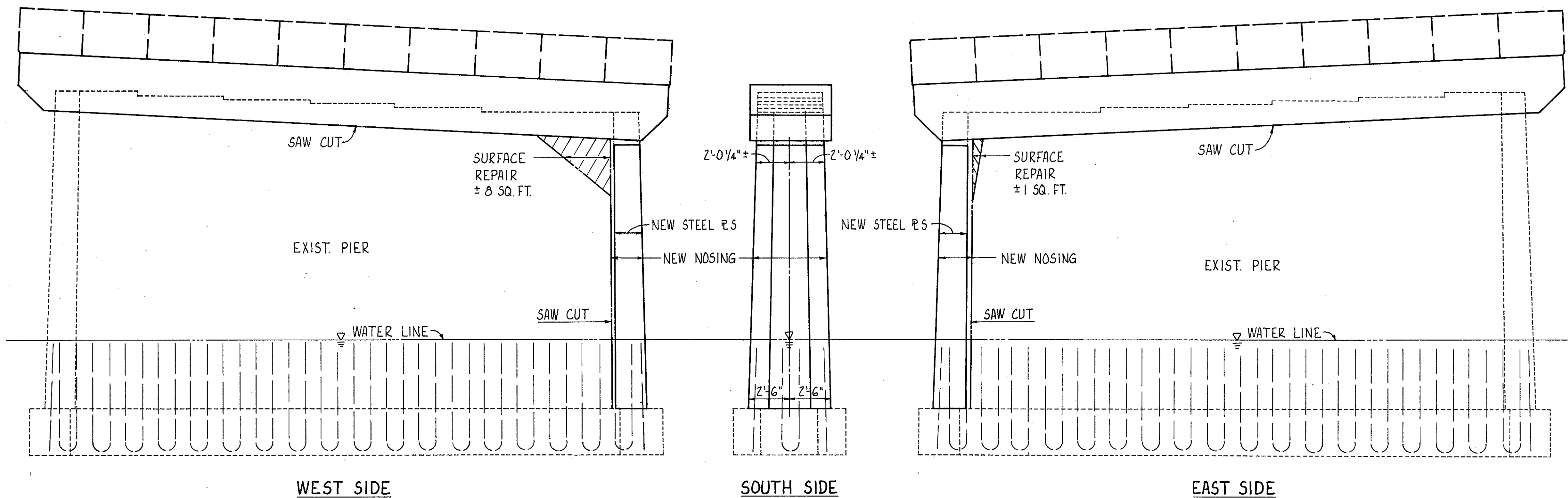
|             |       |         |
|-------------|-------|---------|
| FHWA REGION | STATE | PROJECT |
| 5           | OHIO  |         |

12  
16

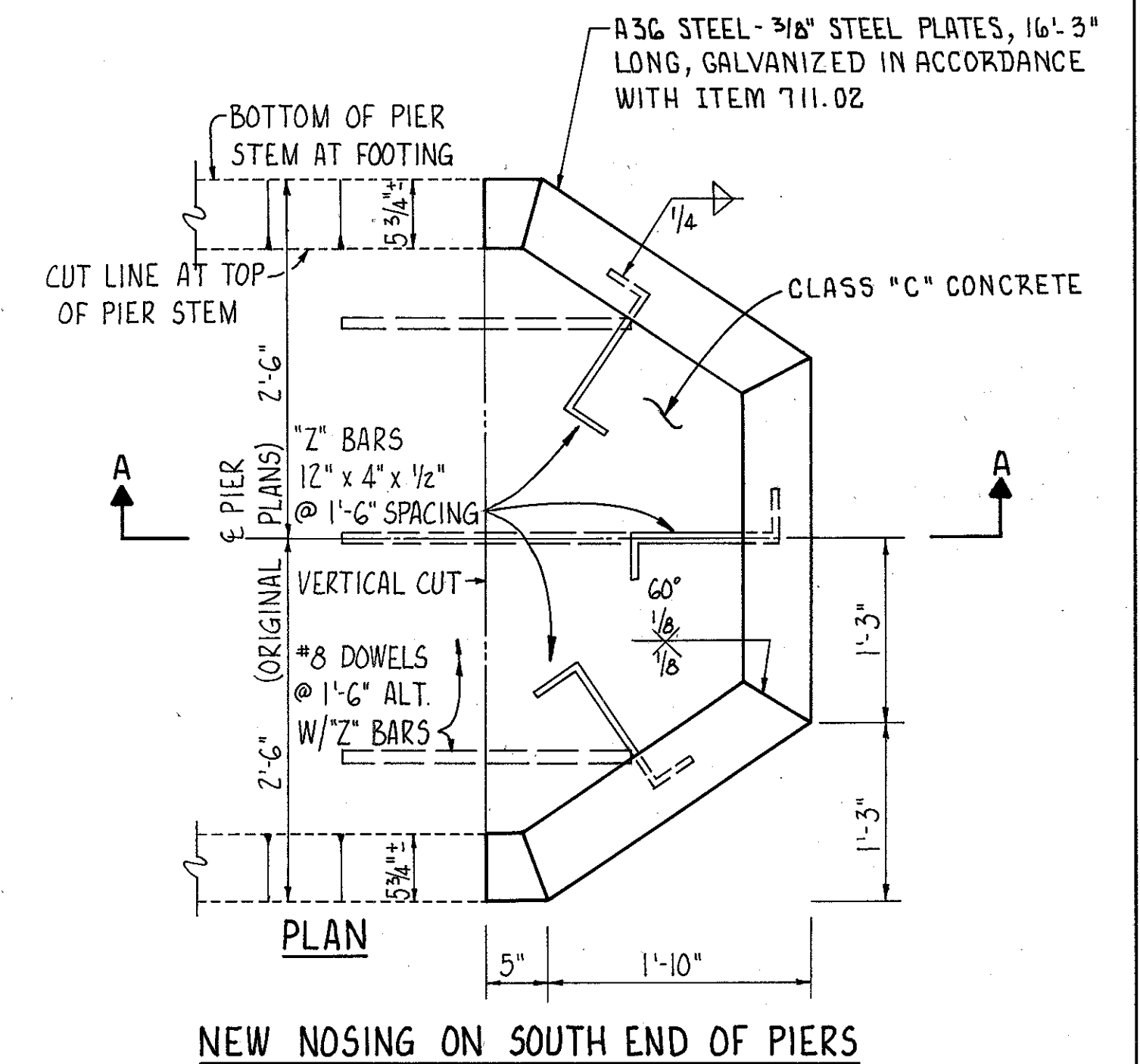
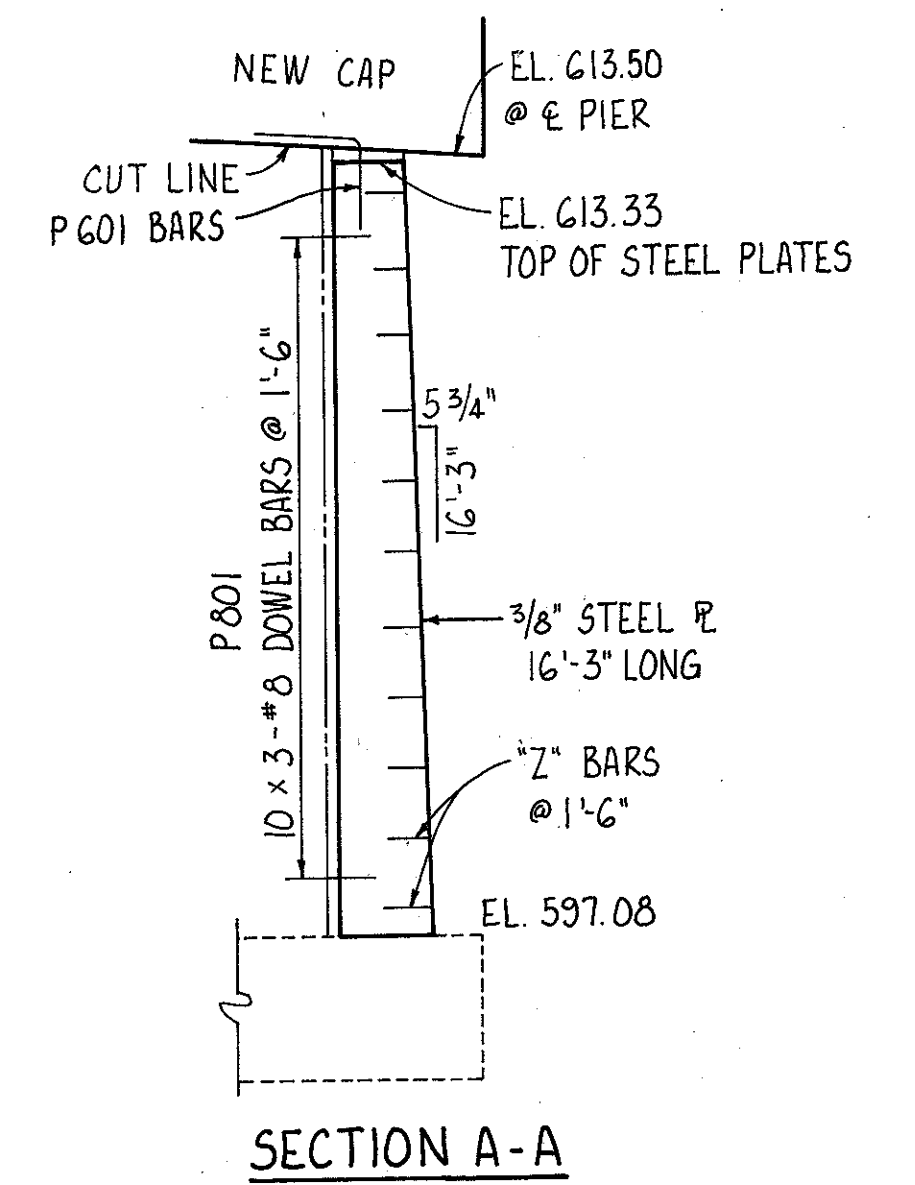
LAKE COUNTY  
LAK-84-0633



EAST PIER ELEVATION



WEST PIER ELEVATION



|                                      |       |        |         |          |         |         |
|--------------------------------------|-------|--------|---------|----------|---------|---------|
| COLPETZER WOODS<br>CONSULTANTS, INC. |       |        |         |          |         | 8 / 12  |
| MENTOR, OHIO                         |       |        |         |          |         |         |
| <b>PIER DETAILS</b>                  |       |        |         |          |         |         |
| BRIDGE NO. LAK-84-0633               |       |        |         |          |         |         |
| S.R. 84 OVER                         |       |        |         |          |         |         |
| THE CHAGRIN RIVER                    |       |        |         |          |         |         |
| LAKE COUNTY                          |       |        |         |          |         | S.R. 84 |
| DESIGNED                             | DRAWN | TRACED | CHECKED | REVIEWED | DATE    | REVISED |
| HM                                   | MK    | MK     | F.A.    | JF       | 11/5/82 |         |

BRUNING 44132 30845 MK