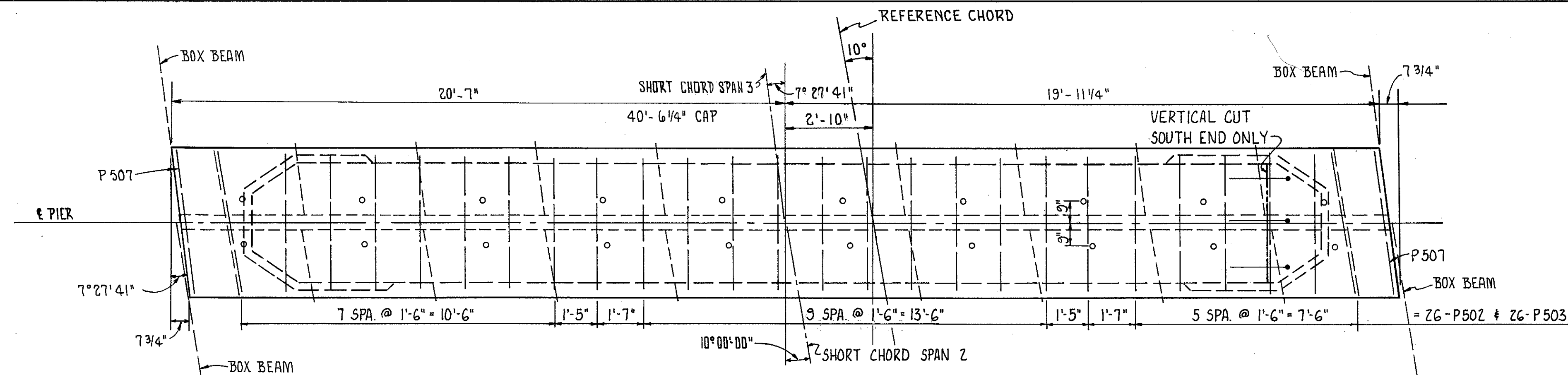


REVISIONS
 OCT 21 1985

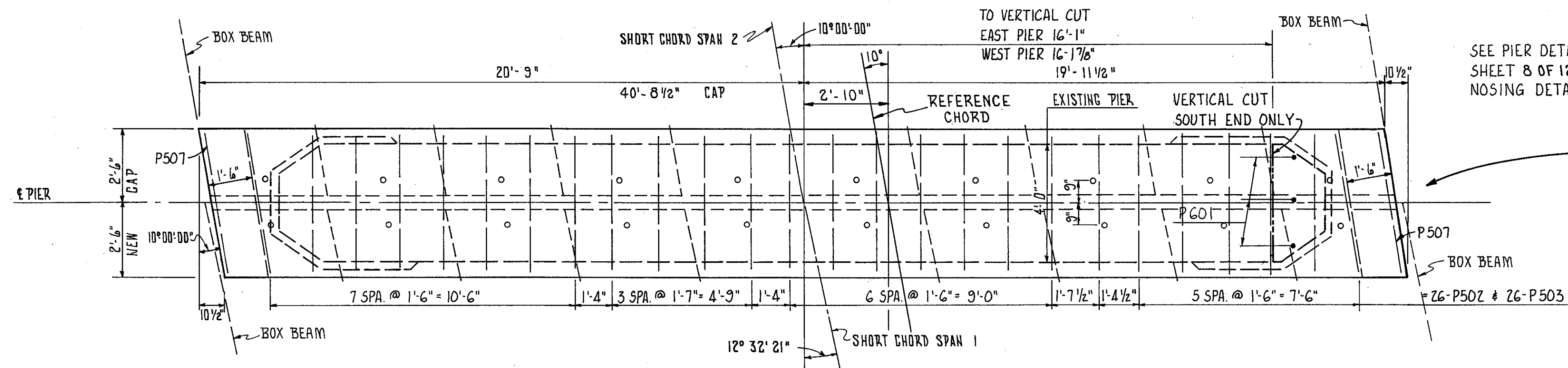
FHWA REGION	STATE	PROJECT
5	OHIO	

11
16

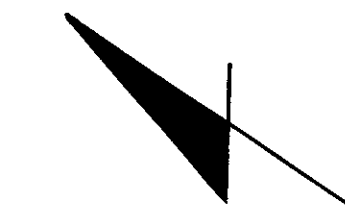
LAKE COUNTY
 LAK-84-0633



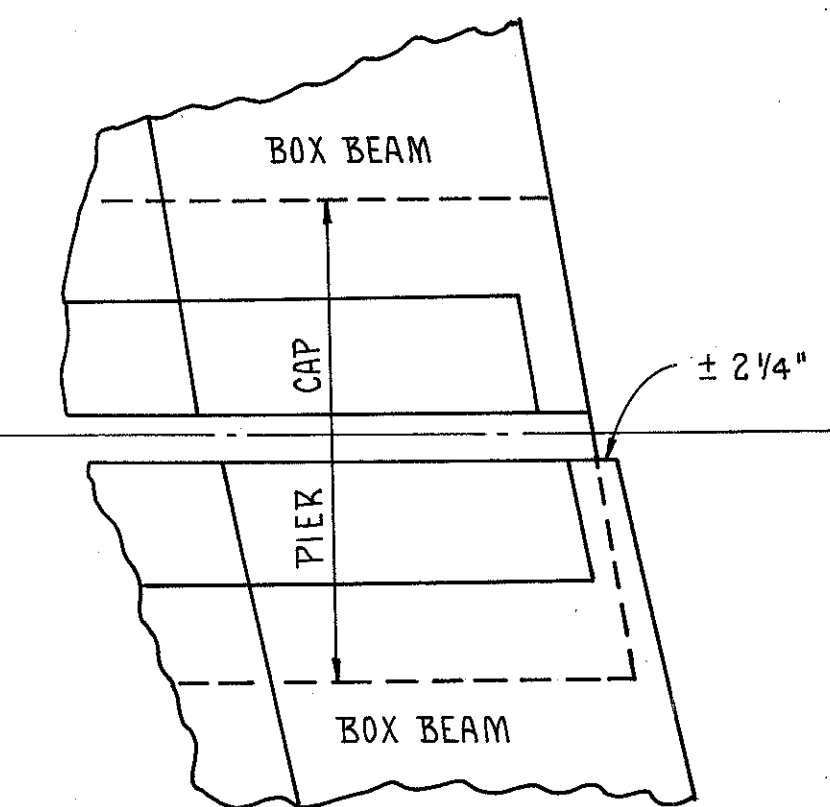
PLAN - EAST PIER



PLAN - WEST PIER



NOTE:
 BEARING SEAT REINFORCING:
 REINFORCING STEEL IN THE VICINITY OF THE BRIDGE
 SEAT SHALL BE ACCURATELY PLACED TO AVOID INTER-
 FERENCE WITH THE DRILLING OF BEARING ANCHOR
 HOLES.

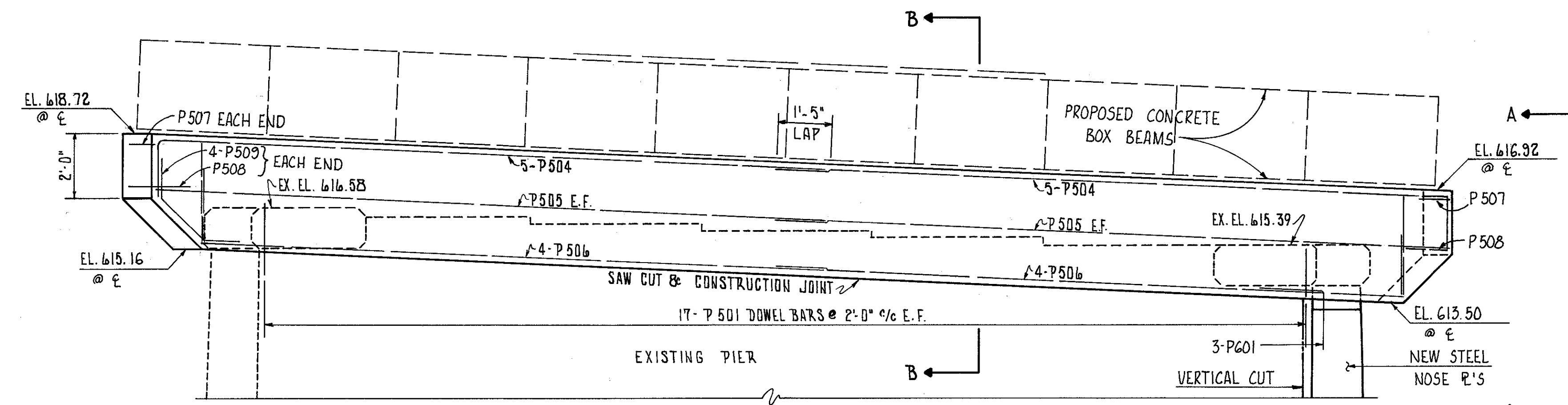


BOX BEAM DETAIL AT PIER CAP

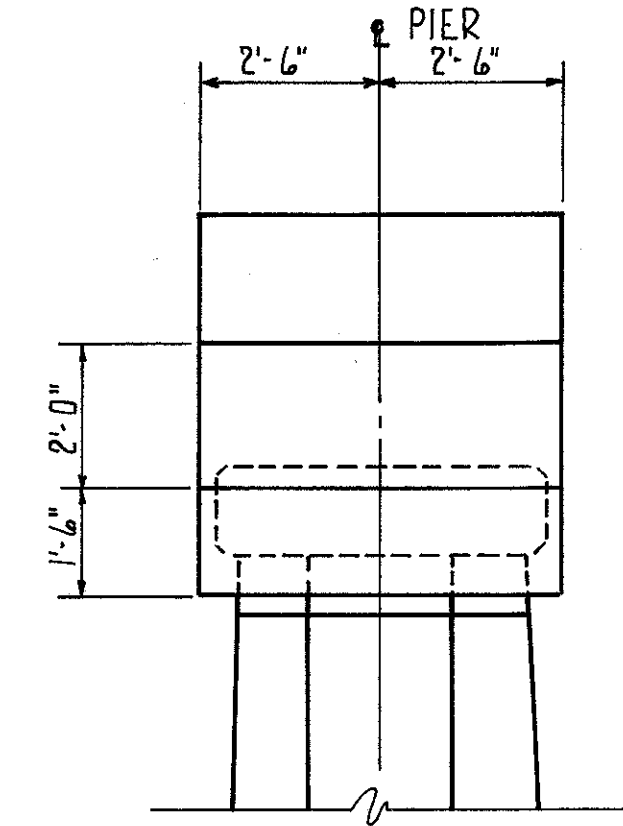
SEE PIER DETAILS
 SHEET 8 OF 12 FOR
 NOSING DETAIL

NOTE: ANCHOR DOWELS, HOLES, GROUT AND SEALER
 INCLUDED WITH ITEM # 515 FOR PAYMENT.

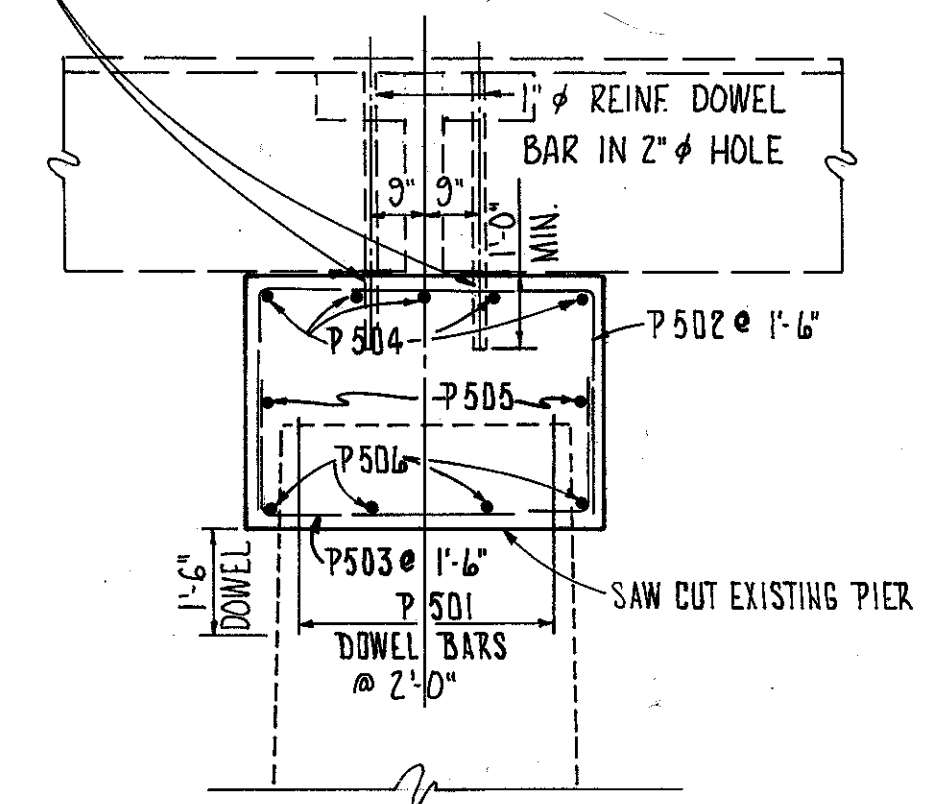
WEST PIER - FILL WITH NON-SHRINKING GROUT.
 EAST PIER - FILL WITH 705.01 OR 705.02 JOINT SEALER.



ELEVATION



ELEVATION A-A



SECTION B-B

LEGEND
 F.F. DENOTES FRONT FACE
 R.F. DENOTES REAR FACE
 E.F. DENOTES EACH FACE

COLPETZER · WOODS CONSULTANTS, INC.						7 / 12
MENTOR, OHIO						
PIER DETAILS						
BRIDGE NO. LAK-84-0633						
S. R. 84 OVER						
THE CHAGRIN RIVER						
LAKE COUNTY						S. R. 84
DESIGNED	DRAWN	TRACED	CHECKED	REVIEWED	DATE	REVISED
PCB	PCB	RG	HT	JF	11/5/82	

DRAWING #4-122-20045-1