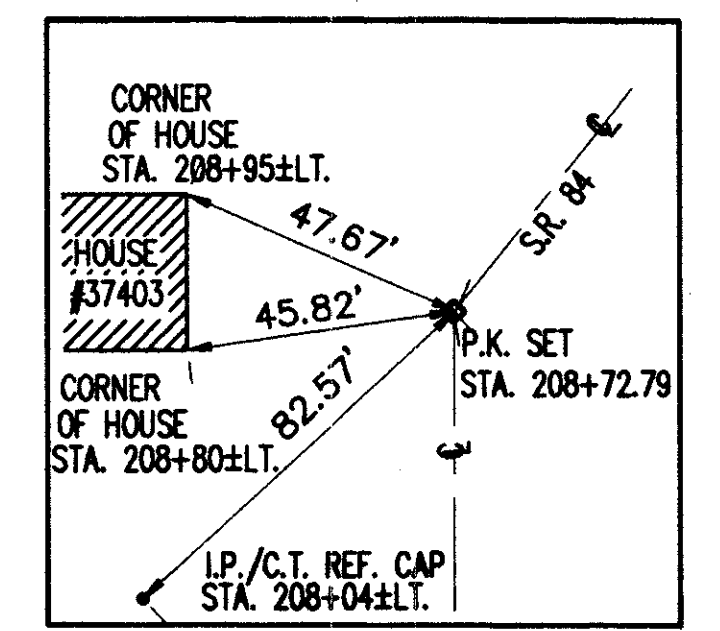


BENCHMARK: TOP OF RIGHT OF WAY MONUMENT
 STA. 200+01.35, 30.37' LT. ELEV. 747.57

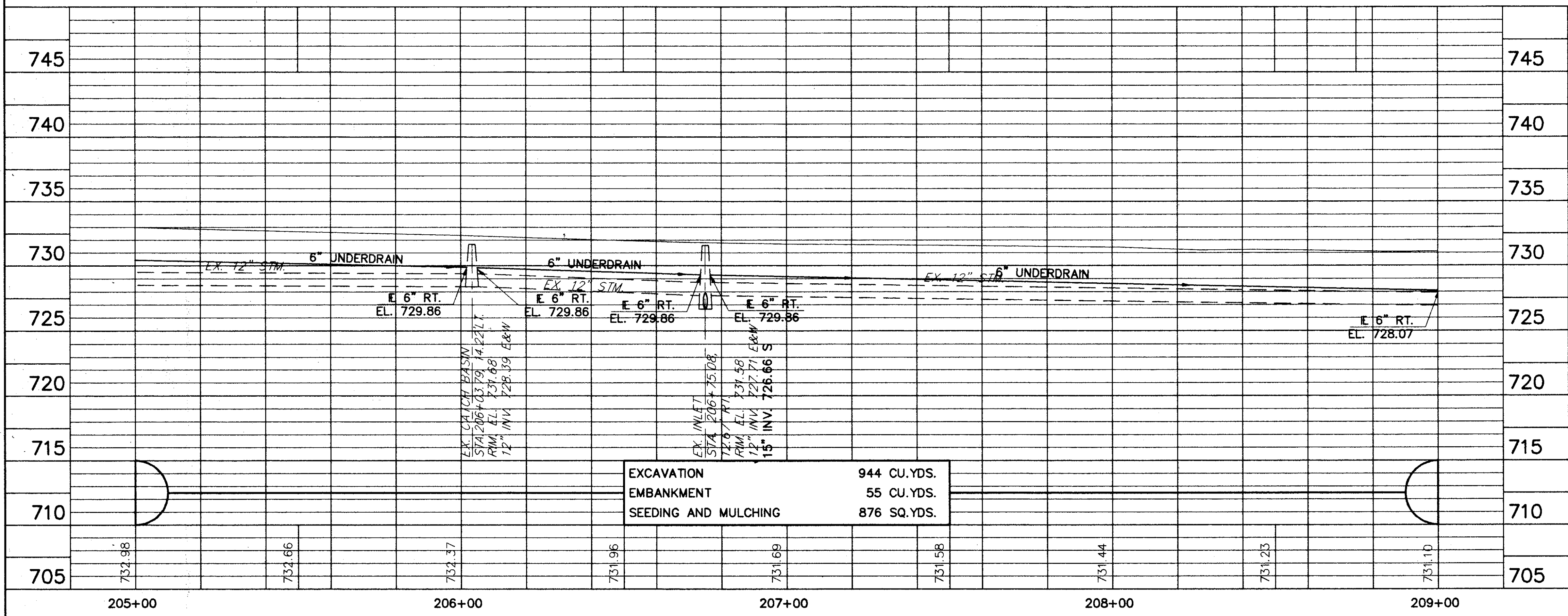
P.I. STA. 205+60.95
 $\Delta=7^{\circ} 45'46''$ OBS. ($7^{\circ} 41'11''$ REC.) & USED
 $D_c=3^{\circ} 30'41''$ REC. & USED
 $R=1631.66'$
 $T=110.70'$
 $L=221.07'$

P.I. STA. 208+73.02
 $\Delta=11^{\circ} 11'44''$ OBS. ($11^{\circ} 12'58''$ REC.) & USED
 $D_c=7^{\circ} 53'14''$ REC. & USED
 $R=726.43'$
 $T=71.20'$
 $L=141.94'$



CALCULATED
 R.I.P. 10-95
 CHECKED D.J.W. 10-95

PLAN AND PROFILE
 STA. 205+00 TO STA. 209+00



FOR TYPICAL SECTIONS SEE SHEETS 2-5.
 FOR GENERAL SUMMARY SEE SHEET 13-14.
 FOR SUB-SUMMARY CHARTS SEE SHEET 15.
 FOR CROSS SECTIONS SEE SHEETS 19-30.
 FOR RETAINING WALL DETAILS SEE SHEETS 31-36.

LAK - 84 - 5.04
 17
 44