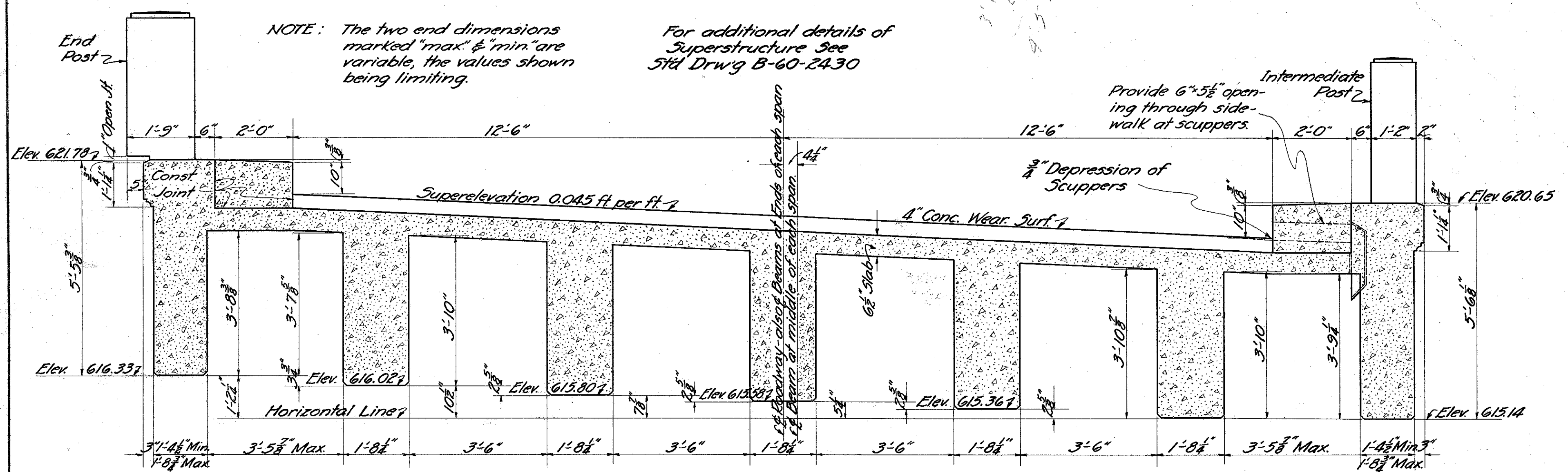
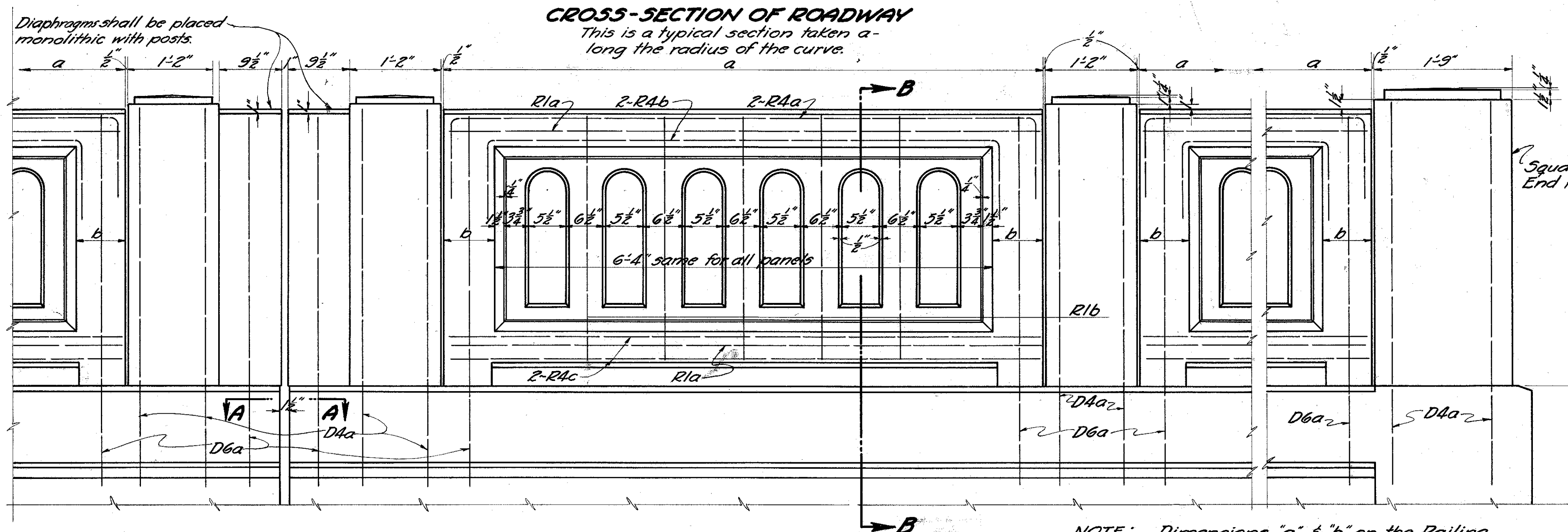


LAKE COUNTY  
S.H. 563 SEC. B BRIDGE



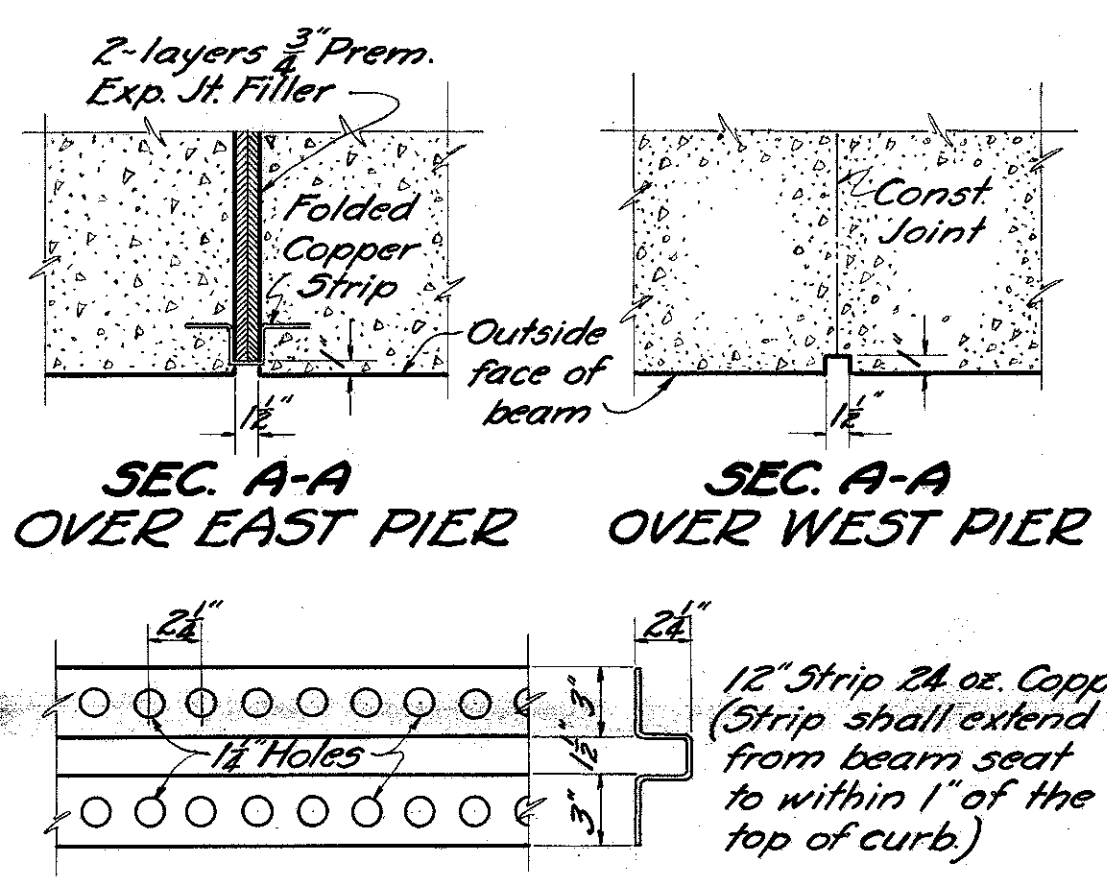
**CROSS-SECTION OF ROADWAY**  
This is a typical section taken along the radius of the curve.



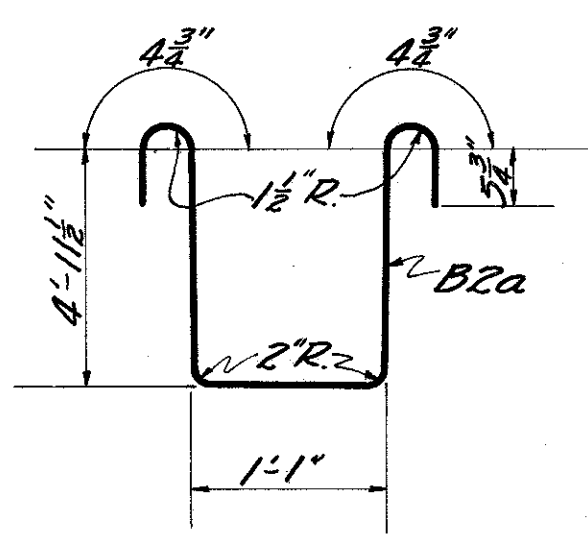
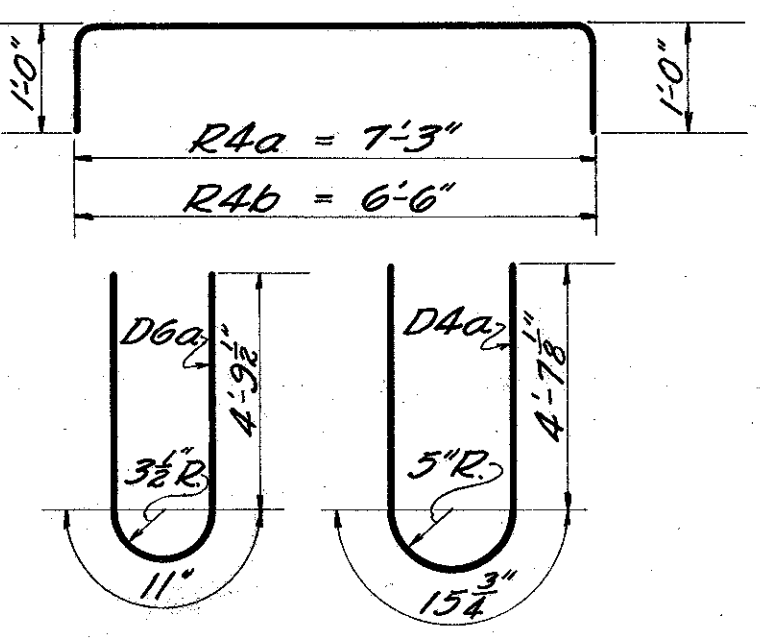
**RAILING DETAILS**

Mark	Size	Shape	No.	Length	Weight
R4a	3/8"	Bent	84	9'-3"	
R4b	3/8"	Bent	84	8'-6"	
R4c	3/8"	Str't	168	7'-6"	
R1a	3/8"	Str't	84	7'-6"	
R1b	3/8"	Str't	210	3'-0"	
D6a	3/8"	Bent	92	10'-6"	1976
D4a	3/8"	Bent	96	10'-6"	1054
				Total	3030

Included in price per lin. ft. of railing



**FOLDED COPPER STRIP OVER EAST PIER**



**IMPORTANT NOTE:**  
Superstructure steel same as shown on Standard Drawing B-60-2430 except 57x, B2a, T2a Railing and Railing Dowel bars as shown on this sheet.

**STEEL LIST**

Mark	Size	No.	Shape	Length	Weight
A9a	1 1/8"	4	Str't	19'-3"	332
A9b	1 1/8"	5	Str't	19'-0"	409
A9c	1 1/8"	5	Str't	18'-9"	404
A9d	1 1/8"	6	Str't	18'-6"	478
A9e	1 1/8"	9	Str't	18'-3"	707
A9f	1 1/8"	13	Str't	18'-0"	1008
A9g	1 1/8"	13	Str't	22'-0"	1232
A9h	1 1/8"	18	Str't	20'-0"	1551
A9i	1 1/8"	137	Bent	23'-0"	13571
A9j	1 1/8"	147	Bent	14'-6"	9180
A9k	1 1/8"	6	Str't	17'-9"	459
A9l	1 1/8"	6	Str't	17'-6"	452
A9m	1 1/8"	5	Str't	17'-3"	371
A9n	1 1/8"	10	Str't	17'-0"	732
A7a	1"	18	Str't	18'-0"	866
A5a	3/8"	12	Str't	15'-6"	280
A5b	3/8"	8	Str't	14'-0"	168
A5c	3/8"	9	Str't	16'-0"	216
A5d	3/8"	72	Bent	14'-0"	1515
A4a	3/8"	19	Str't	35'-9"	709
A4b	3/8"	9	Str't	15'-9"	148
A4c	3/8"	3	Str't	11'-0"	34
A4d	3/8"	1	Str't	7'-0"	7
A4e	3/8"	15	Str't	20'-0"	313
A4f	3/8"	1	Str't	14'-6"	45
A4g	3/8"	1	Str't	10'-0"	10
A4h	3/8"	8	Str't	17'-0"	142
A2a	1/2"	20	Str't	7'-9"	104
A2b	1/2"	28	Str't	4'-6"	84
A2c	1/2"	8	Str't	32'-9"	175
A2d	1/2"	16	Bent	4'-0"	43
A2e	1/2"	108	Bent	4'-6"	325
F8a	1"	180	Bent	10'-0"	6125
F8b	1"	40	Bent	8'-6"	1157
F7a	1"	3	Bent	12'-0"	96
F7b	1"	3	Bent	12'-0"	96
F7c	1"	3	Bent	12'-0"	96
F7d	1"	3	Bent	12'-0"	96
F7e	1"	3	Bent	12'-0"	96
F7f	1"	3	Bent	12'-0"	96
F7g	1"	3	Bent	12'-0"	96
F7h	1"	3	Bent	12'-0"	96
F4a	3/8"	10	Str't	40'-0"	418
F4b	3/8"	4	Str't	21'-0"	88
F4c	3/8"	4	Str't	23'-0"	96
F4d	3/8"	4	Str't	20'-0"	84
F4e	3/8"	4	Str't	22'-0"	92
P5a	3/8"	76	Bent	14'-0"	1599
P2a	3/8"	108	Bent	5'-9"	413
P2b	3/8"	20	Str't	4'-6"	60
P2c	3/8"	8	Str't	3'-0"	16
				Total	46,660

**PROPOSAL NO. 1**

STATE OF OHIO  
DEPARTMENT OF HIGHWAYS  
BUREAU OF BRIDGES

**SUPERSTRUCTURE, RAILING  
DETAILS & STEEL LIST**

BRIDGE OVER CHAGRIN RIVER

S.H. 563 LAKE COUNTY  
SECTION "B" BRIDGE STA. 27+15.2

DESIGNED	DRAWN	TRACED	CHECKED	REVIEWED	DATE	REVISED
C.H.A.	C.H.A.	J.R.P.	J.M.M.	J.H.C.	11/21/51	