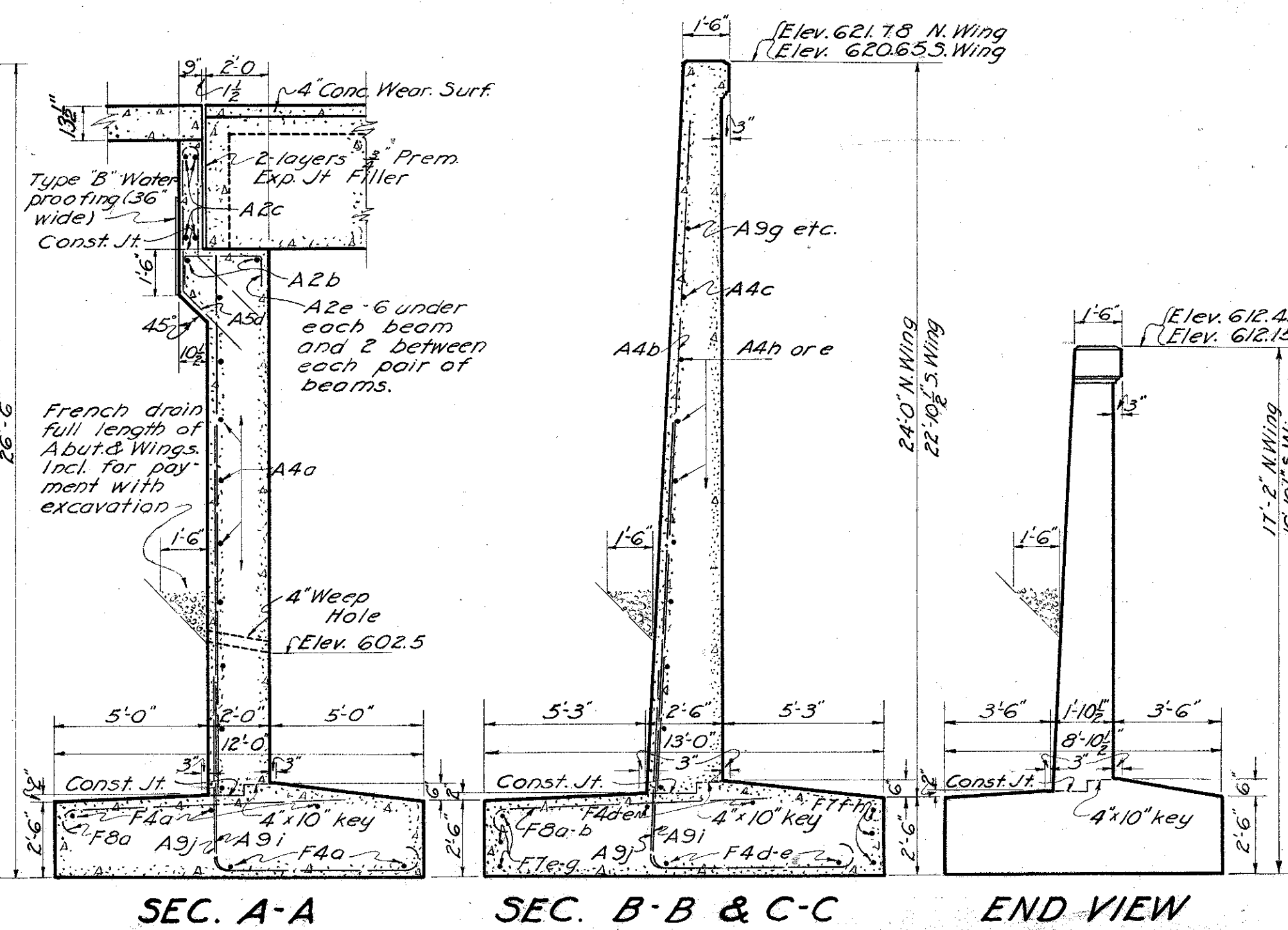
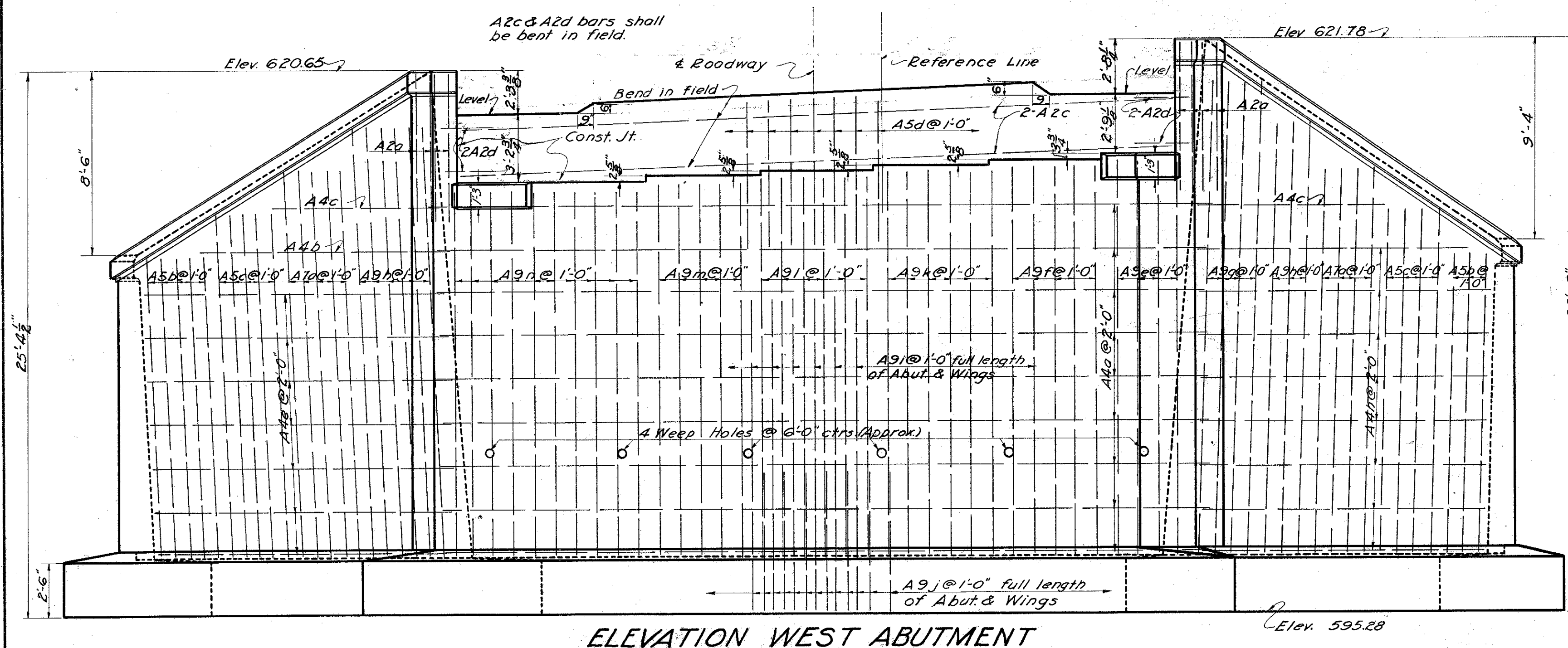
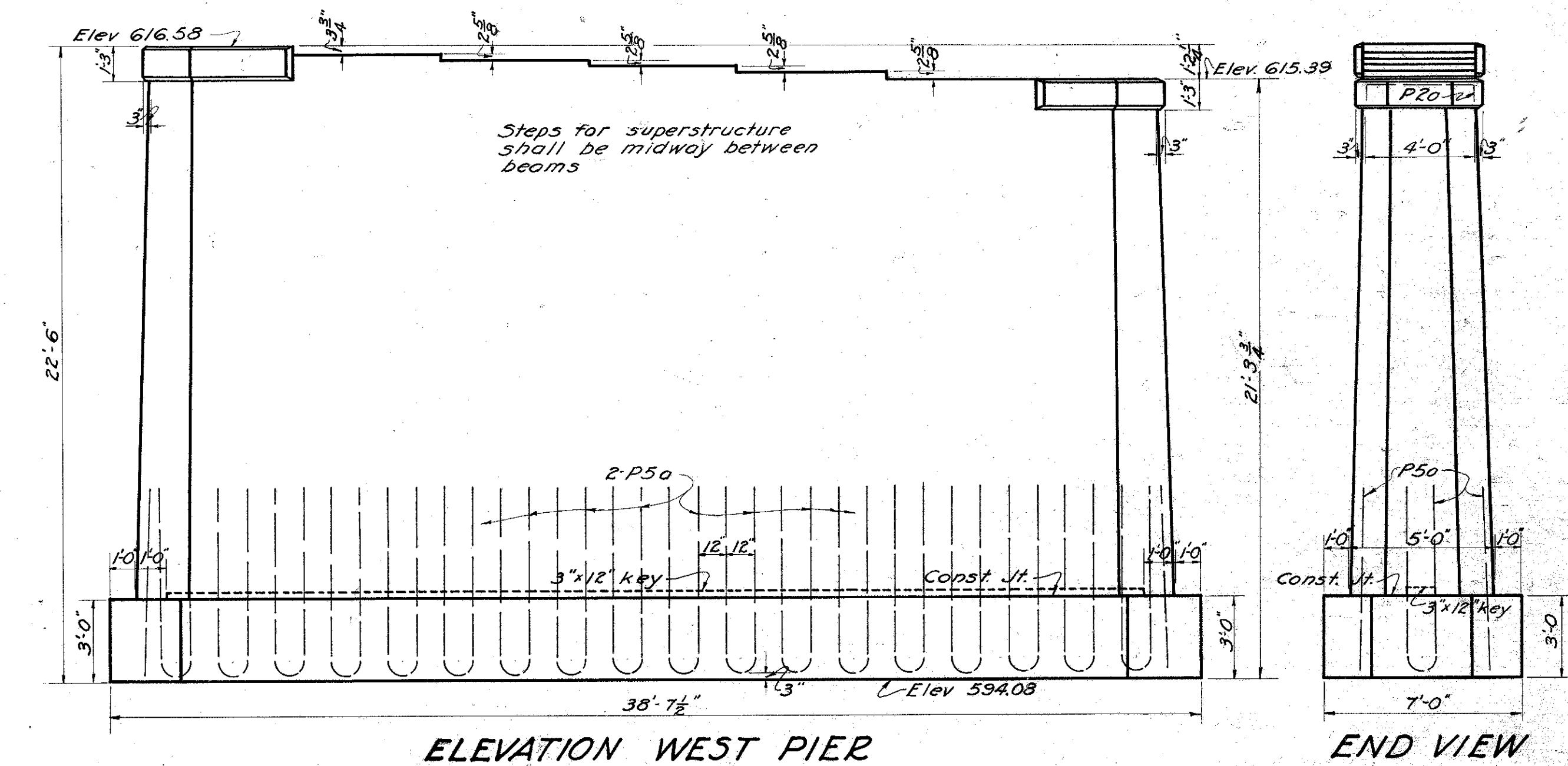
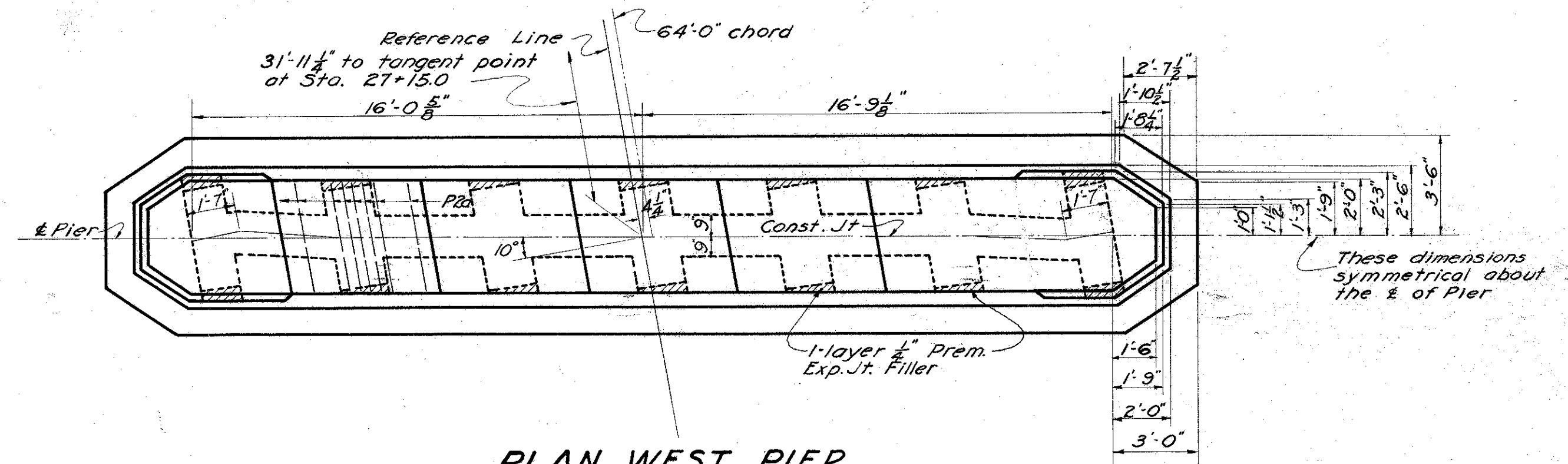
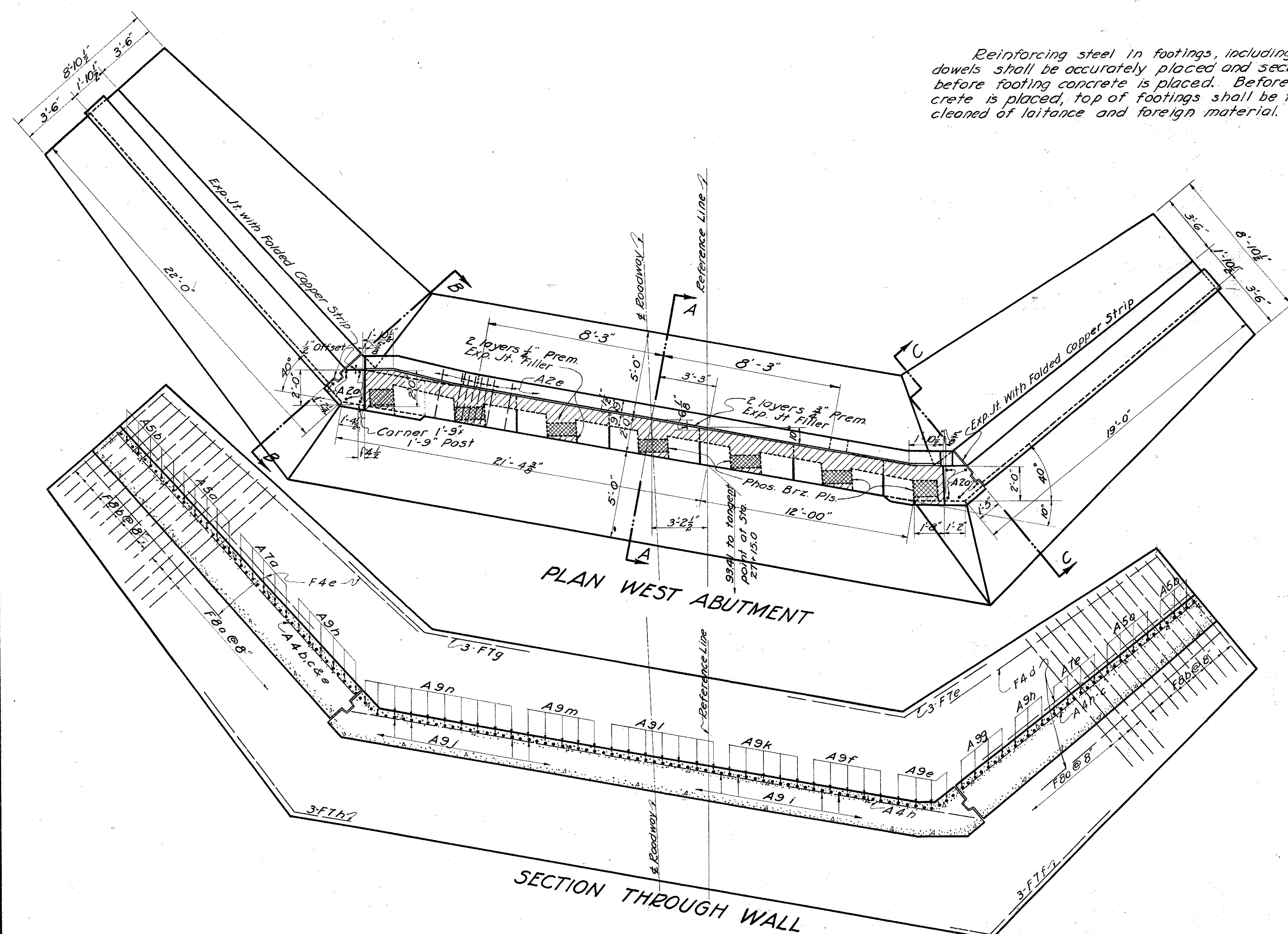


Reinforcing steel in footings, including footing dowels shall be accurately placed and secured before footing concrete is placed. Before wall concrete is placed, top of footings shall be thoroughly cleaned of laitance and foreign material.



PROPOSAL No 1

STATE OF OHIO
DEPARTMENT OF HIGHWAYS
BUREAU OF BRIDGES

DETAILS OF WEST ABUT. & WEST PIER

BRIDGE OVER CHAGRIN RIVER

S.H. 563 SECTION B LAKE COUNTY STA. 27+15.0

DESIGNED	DRAWN	TRACED	CHECKED	REVIEWED	DATE	REVISED
C.H.R.	C.H.R.	J.C.C.	J.M.W.	R.H.C.	7/1/51	