

STEEL LIST					
No	Mark	Size	Straight or Bent	Length	Spacing
50	T2a	1/2" #	Straight	42'-0"	12"
4	T2b	1/2" #	Bent	42'-0"	12"
90	T2c	1/2" #	Straight	5'-4"	12"
8	T2d	1/2" #	"	9'-4"	"
216	V2a	1/2" #	"	6'-4"	12"
26	V2b	1/2" #	"	15'-6"	12"
6	V2c	1/2" #	"	9'-8"	12"
480	S5a	3/4" #	"	5'-4"	5 3/4"

SUMMARY OF QUANTITIES (Water main enclosure)

338.0 Cu. Yds. Excavation
 9568 Cu. Yds. 1:5 1/2 Concrete
 6,942 Lbs. Reinforcing Steel
 654 lin. ft. 8" V.P.S. (Sewer Quantities)
 20 lin. ft. 8" Corr. I.P. with flap gate
 1 Manhole

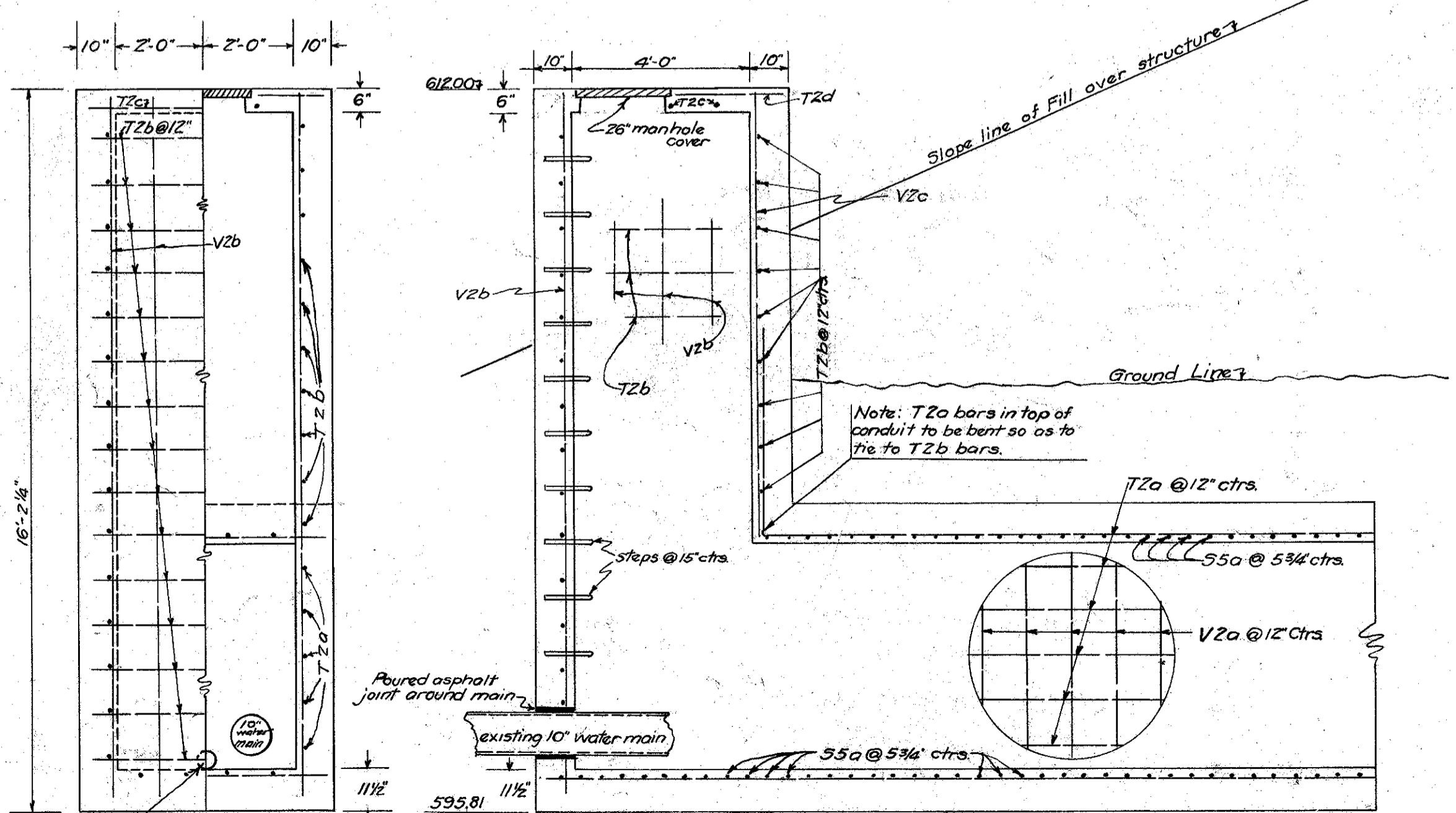
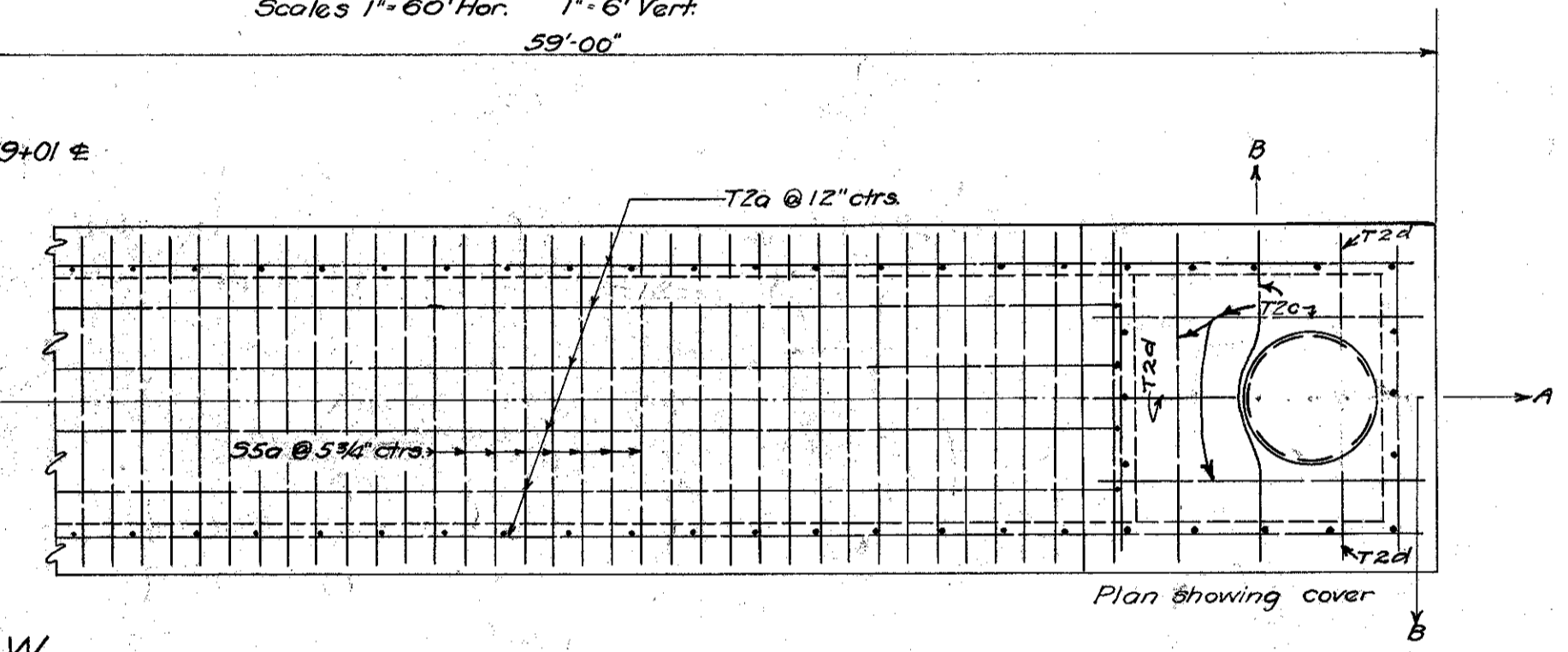
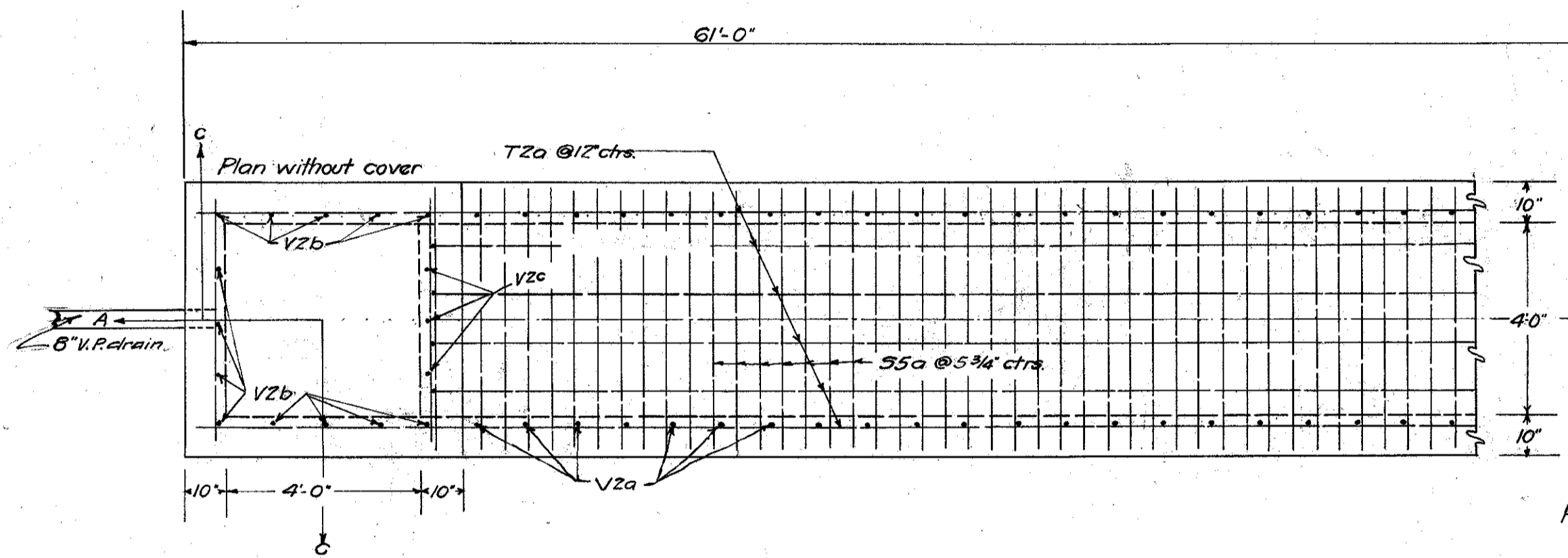
STEEL LIST					
No	Mark	Size	Straight or Bent	Length	Spacing
8	T2e	1/2" #	Straight	5'-8"	12"
8	T2f	1/2" #	"	4'-8"	12"
18	V2e	1/2" #	"	3'-8"	12"

SUMMARY OF QUANTITIES (Gas Well enclosure)

96 Lbs. Reinforcing Steel
 1.48 Cu. Yds. 1:5 1/2 Concrete

Note: extreme care shall be taken in excavating around and backfilling over the 10" water main. Contractor shall keep main water-tight and in continuous operation, and leave it in good condition at the completion of the work.

Water main to be carried on concrete cradles 12" in width and spaced on 12" centers.



Approved. Date 4/13/31
 Board of Public Affairs Vill. of Willoughby
 By _____ Clerk,
 subject to the fulfillment of the conditions set forth in the letter of April 13, 1931, from George B. Gascoigne, Consulting Engineer, a copy of which is hereto attached.
 Geo. F. Law, Clerk.

The conditions set forth in the above letter have been complied with. The necessary changes and notes covering same have been made part of this plan.
 A.B. Wilson
 Resident Engineer

LONGITUDINAL SECTION A-A
3/8" = 1"

