

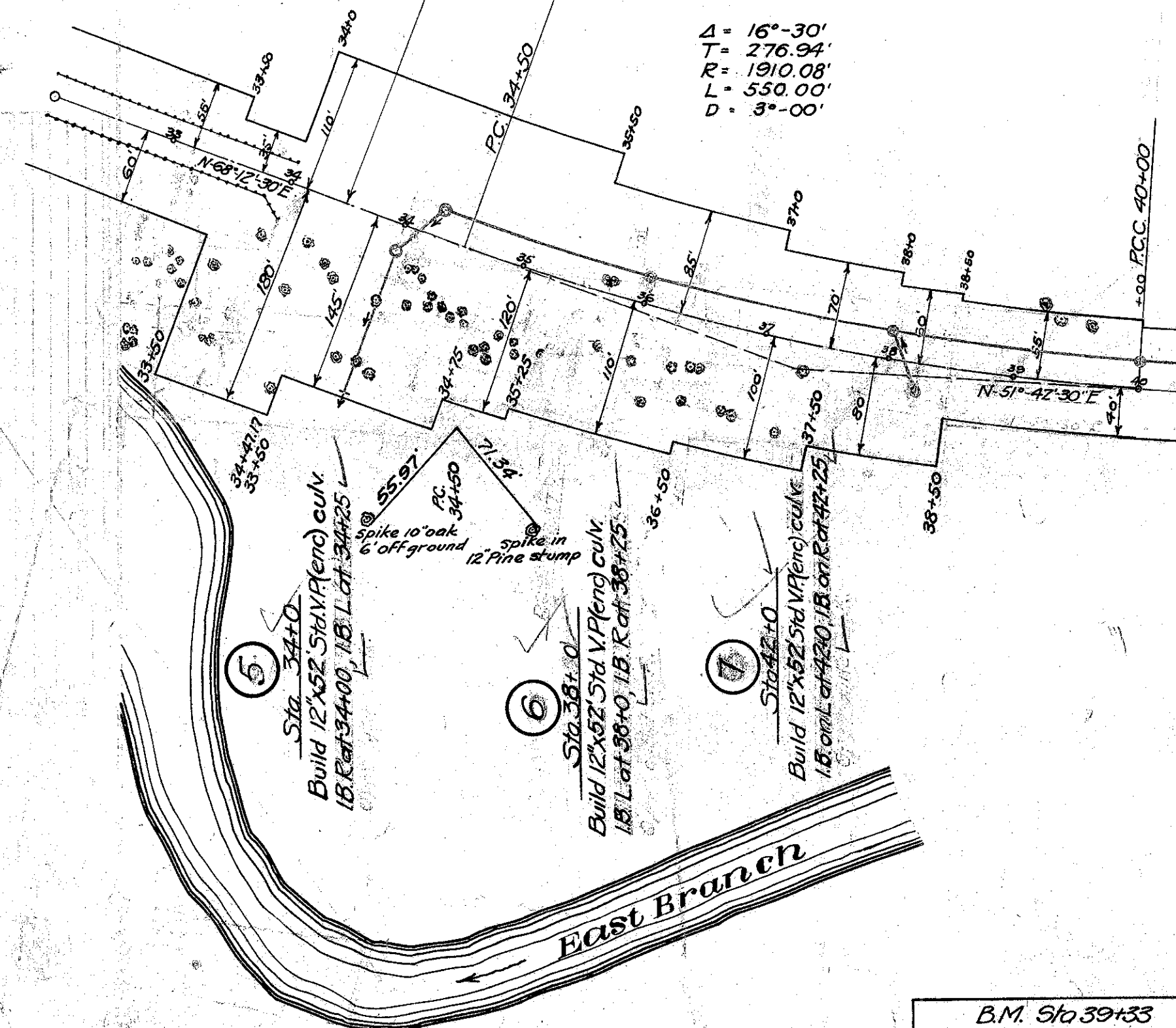
SUMMARY OF TYPED GUARD RAIL

From Sta.	To Sta.	Lin. Ft. on R.	Lin. Ft. on L.
28+6	34+0	584	676
28+24	34+0		676

EQUATION
Sta. 34+47.17 = Sta. 33+50

Sta 34+25 to Sta. 42+0 on L.
Lay 775' 12" V.P. sewer 22.5' of E.
775 lin. ft. 12" V.P.
Sta 34+0 and to R.
Lay 120' 12" V.P. sewer from I.B. R to edge of bank
120 lin. ft. 12" V.P.
1 cu yd 1.5 1/2 Con. 33 lbs. Steel (thw).
Sta 36+0, Sta. 40+0
Build Std. I.B.s 22.5' L of E over sewer.

Δ = 12° 54' 30"
T = 948.53'
R = 3354.30'
L = 1888.83'
D = 0° 41'



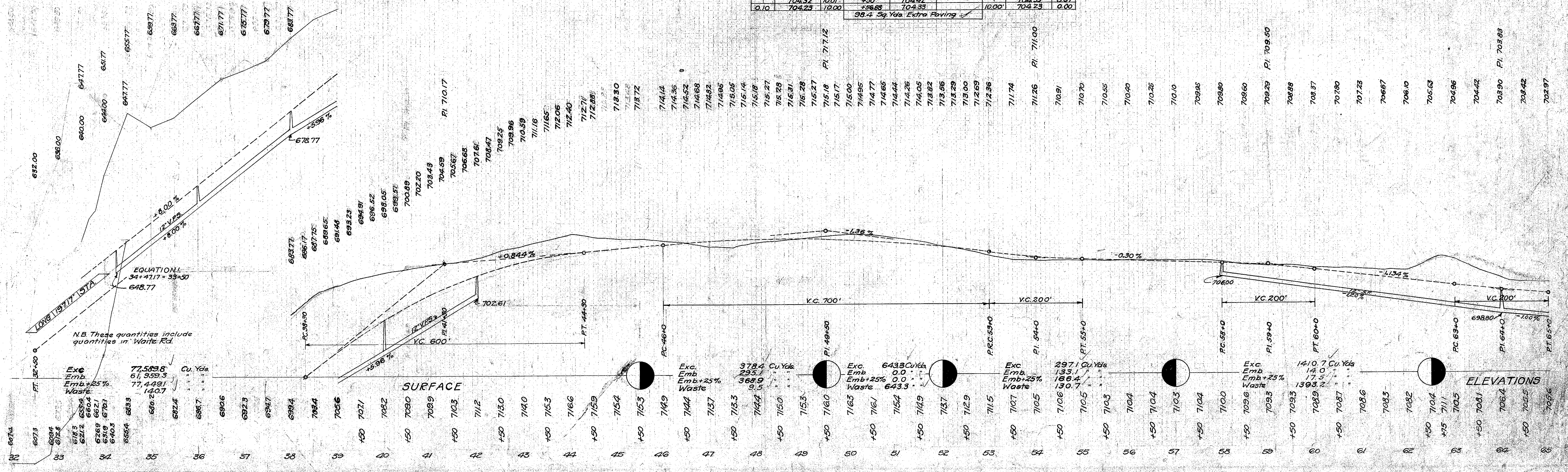
Sta 33+50 to Sta 58+11.11 CENTER LINE										Sta 58+11.11 to Sta 63+36.88 CENTER LINE									
LEFT	Elevation Edge	Width	STATION	GRADE	DEFLECTION	Width	Elevation Edge	Add to Elevation	RIGHT	LEFT	Elevation Edge	Width	STATION	GRADE	DEFLECTION	Width	Elevation Edge	Add to Elevation	RIGHT
0.10	647.67	10.00	33+50	647.77		10.00	647.67	0.00	0.10	703.67	10.00	58+11.11	703.77			10.00	703.67	0.00	0.10
	651.67		34+0	651.77			651.67	0.00		703.61	10.00	59+25	703.71				710.08	0.47	
	655.67		PC 35+0	659.77	0° 00'		656.99	0.72		703.50	10.22		703.60				710.17	0.67	
	659.67			659.77	0° 45'		660.39			703.35	10.61		703.45				710.22	0.87	
	663.67			663.77	1° 30'		664.39			703.19	11.18	59+50	703.29				710.26	1.07	
	667.67		36+0	667.77	2° 15'		668.39			703.11	11.61	PC 41+11	703.21	0° 00' 00"			710.27	1.16	
	671.67			671.77	3° 00'		672.39			703.00	11.92		703.10	0° 41' 37"			710.27	1.27	
	675.67		37+0	675.77	3° 45'		676.39			702.78	12.36	59+50	702.88	1° 38' 31"			710.25	1.47	
	679.67			679.77	4° 30'		680.39			702.68	12.82		702.78	2° 29' 48"			710.20	1.52	
	683.67		38+0	683.77	5° 15'		684.39			702.54			702.64	3° 11' 28"			710.06		
	687.67			687.75	6° 00'		688.39			702.27		60+0	702.37	4° 26' 19"			710.29		
	691.38		39+0	691.48	6° 45'		692.39	0.72		702.39		75	702.09	5° 41' 13"			709.51		
	694.81			694.91	7° 30'		695.41	0.60		702.70		75	702.80	6° 56' 07"			709.22		
	697.35		PC 40+0	698.05	8° 15'		698.43	0.48		702.42		75	702.52	8° 11' 01"			708.94		
	700.79	10.00		700.89		10.00	701.15	0.36		702.13		61+0	702.23	9° 25' 55"			708.65		
										701.85		75	702.33	10° 40' 49"			708.37		
										706.57		75	706.67	11° 55' 43"			708.09		
										706.29		75	706.39	13° 10' 37"			707.81		
										706.00		75	706.10	14° 25' 31"			707.52		
										705.39	12.42	+06.88	706.03	14° 46' 09"			707.45	1.52	
										705.22	12.26	+25	705.82	15° 40' 25"			707.04	1.32	
										705.49	11.72	+50	706.33	16° 38' 19"			706.50	1.07	
										705.35	11.51	PT +56.88	705.45	17° 16'			706.35	1.00	
										705.15	10.98	+75	705.25				705.97	0.82	
										704.86	10.48	63+0	704.96				705.43	0.57	
										704.58	10.15	+75	704.68				704.90	0.32	
										704.37	10.01	+50	704.47				704.39	0.07	
										0.10	704.25	10.00	+56.88	704.35			704.23	0.00	

N.B. 0.36' Superelevation carries on E. to and including Sta. 58+11.11. No Extra Paving.

B.M. Sta 39+33
Spike front 36' poplar
45' to left of E
Elev. 713.51

B.M. Sta 58+08
Spike front 24' Elm
205' to Left of E
Elev. 710.62

Grade line shown is crown elevation of finished pavement



N.B. These quantities include quantities in White Rd.

Exc. Emb. +25% Waste
77,589.8
64,359.3
77,429.1
140.7

Exc. Emb. +25% Waste
378.4 Cu Yds
295.1
368.9
9.5

Exc. Emb. +25% Waste
6433 Cu Yds
0.0
6433.0

Exc. Emb. +25% Waste
297.1 Cu Yds
133.1
186.4
130.7

Exc. Emb. +25% Waste
14.0 Cu Yds
14.0
17.5
1393.2

ELEVATIONS