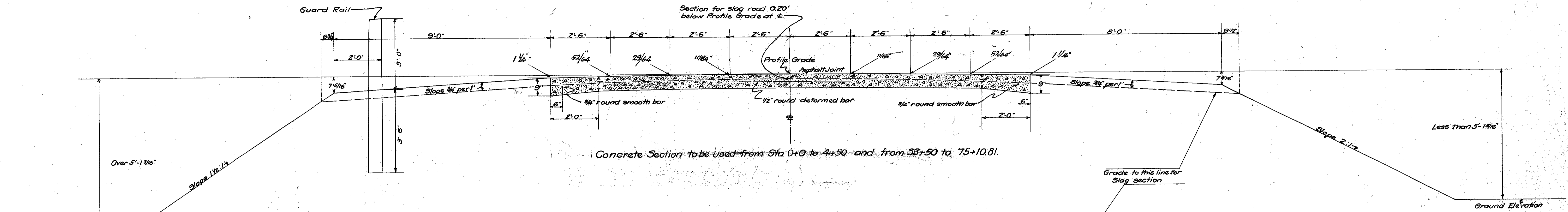


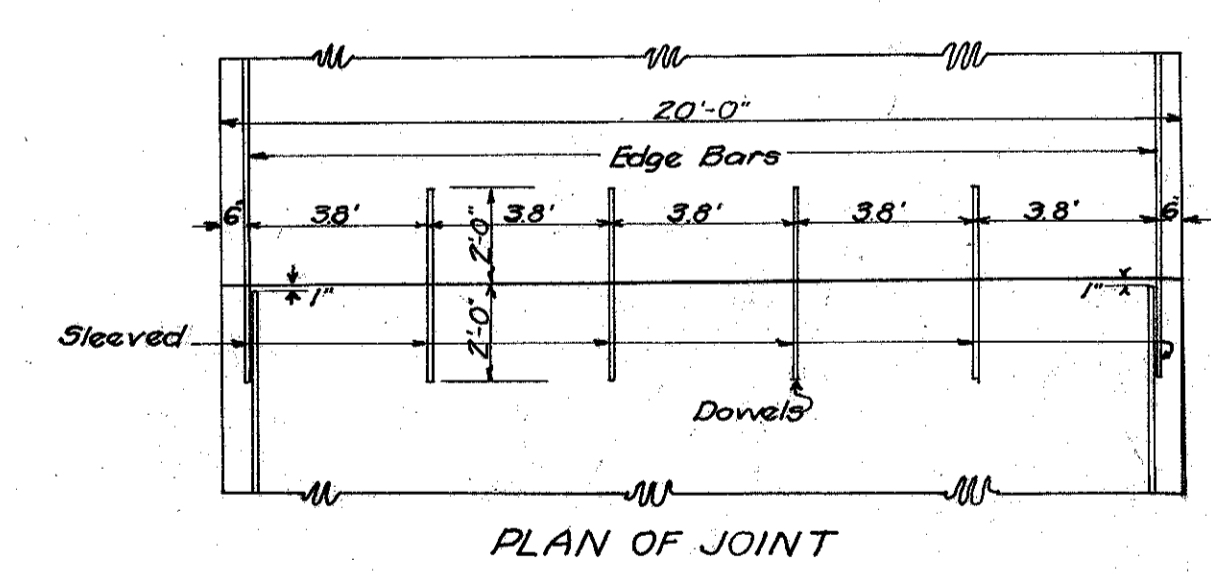
TYPICAL SECTIONS
SCALE 1" = 2"

N.B. Center Joint for Concrete section
Conform to Constr. Dr. No. 98 or 100.

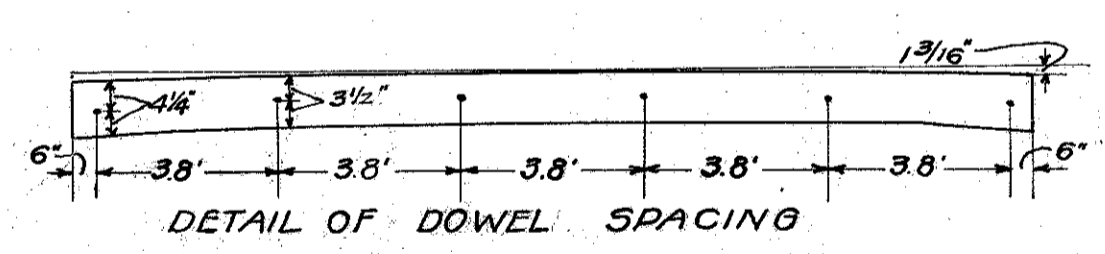


Concrete Section to be used from Sta 0+0 to 4+50 and from 33+50 to 75+10.81.

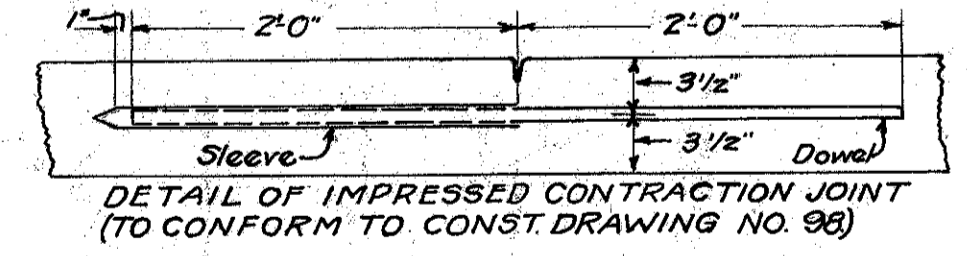
Note: Minimum Tonnage required is calculated on following weights:
1 cu. yd. slag = 2000 lbs
1 cu. yd. stone = 2400 lbs.



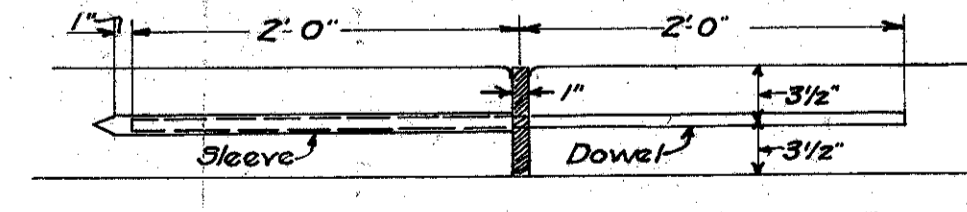
PLAN OF JOINT



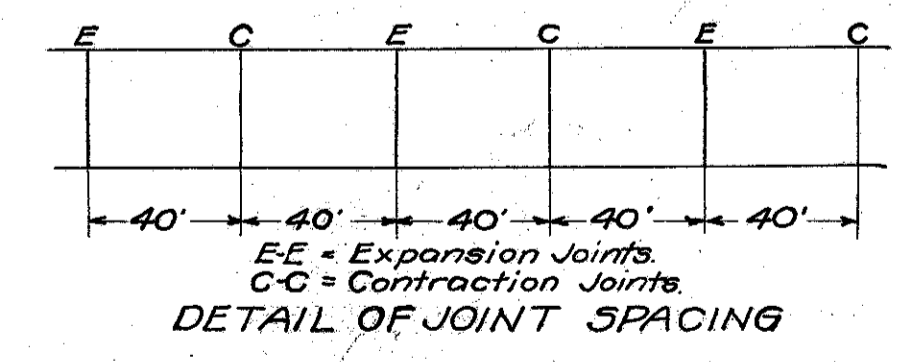
DETAIL OF DOWEL SPACING



DETAIL OF IMPRESSED CONTRACTION JOINT
(TO CONFORM TO CONST. DRAWING NO. 98)



DETAIL OF PREMOULDED EXPANSION JOINT
SLEEVED DOWEL TRANSVERSE
CONTRACTION & EXPANSION JOINTS.



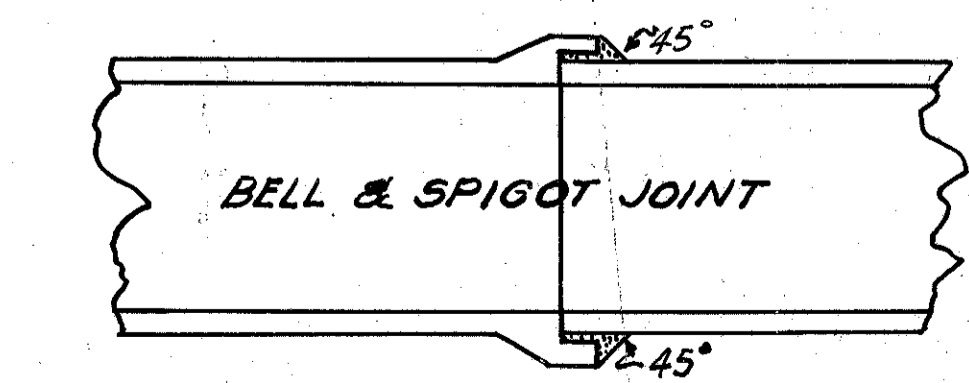
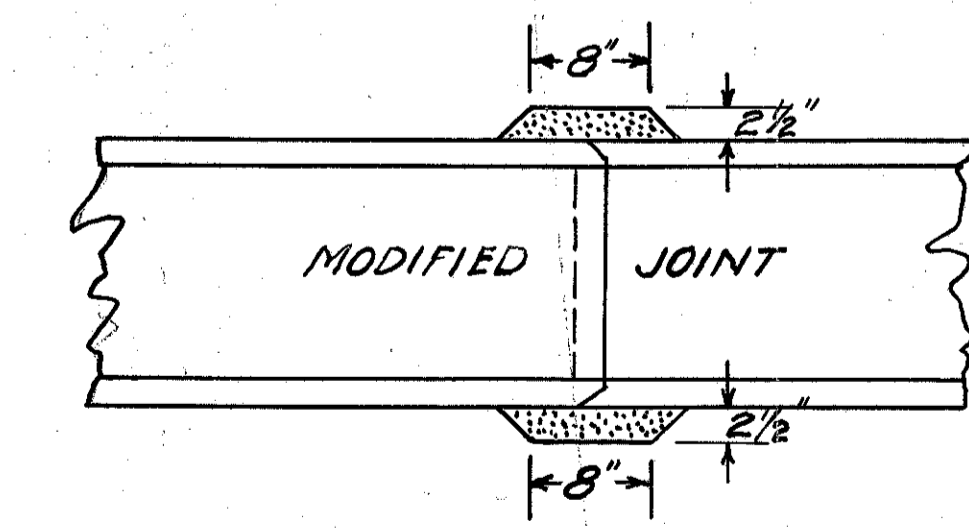
DETAIL OF JOINT SPACING

All dowel and edge bars shall be supported by means of chairs of an approved type.
All dowels and edge bars to be 3/4" round smooth bars with neat fitting sliding sleeve at one end.
All joints to be edged with a beading tool of 1/4" radius.
Premoulded expansion joint material to meet specification of Sec M-10, Material Details, and to conform to the crown curvature and be neatly punched with 3/4" holes at proper spacing and dimensions. Premoulded expansion joints to be installed in such manner as to insure them to be vertical and straight.

This Section to be used From Sta 4+50 to 26+18.86 on Waite Rd.
and from 0+0 to 24+16.01 on Waite Rd.

All curves to be widened and superelevated as shown in tables on plan sheets.
The Grading, Sloping and Trimming shall be done before applying the material. The Grade shall be approved by the Engineer before the material is applied. Any damage occurring to the shoulders, slopes and ditches shall be corrected before final acceptance. Material to be spread as shown unless otherwise ordered. The material shall be kept in an even, smooth surface during construction by blading or dragging. All material that is loose shall be bladed in even windrows on each shoulder before final acceptance.

Note: Traffic between Willoughby Village and Waite Hill Village to be maintained at all times by using the existing Bunnell Hill route or by another adequate route comprising parts of Bunnell Hill, Wickliffe-Madison road and the Waite road.



Reinf. Conc. Pipe used as an alternate for U.S.P. encased shall be cemented as shown in the accompanying sketch. When U.S.P. is not encased Reinf. Conc. Pipe will not be cemented.