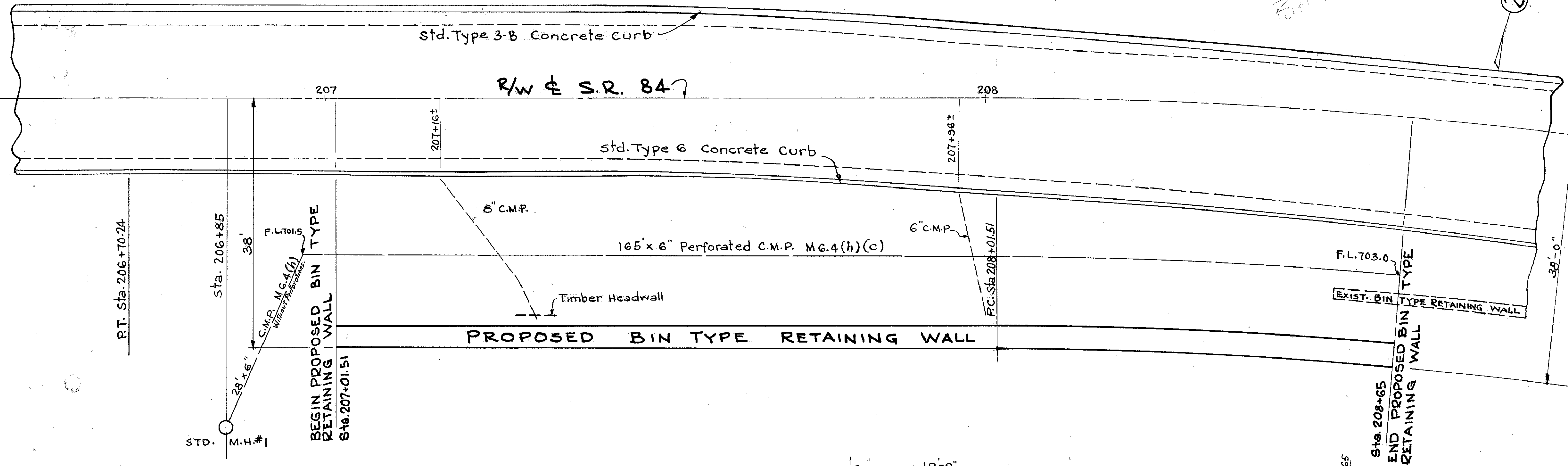


GENERAL PLAN

SHOWING LOCATION OF BIN-TYPE RETAINING WALL
SCALE 1" = 10'

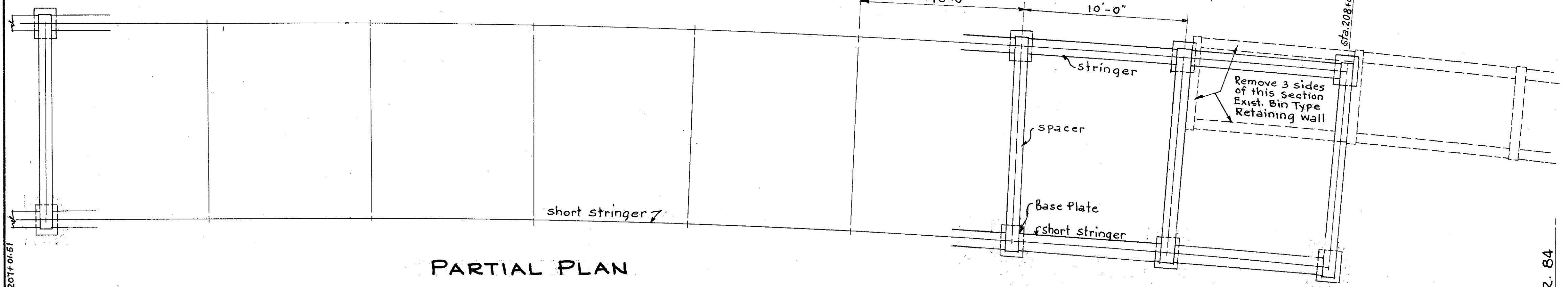
FED. RD. DIVISION	STATE	PROJECT	82A 83
2	OHIO		

LAK 84-(3.27-7.81)
LAKE COUNTY



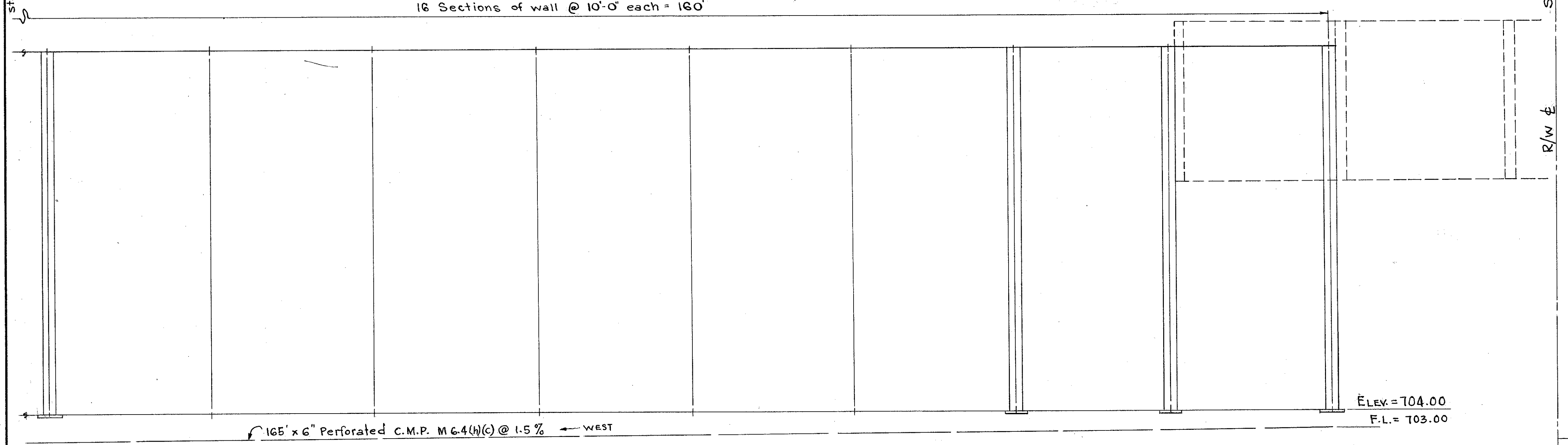
NOTES:-
 Removal and Disposal of existing 8" C.M.P., 6" C.M.P., Timber Headwall, and west section of existing Bin Type wall, to be included in Lump Sum Price for Item S-22 Removal of Portions of Existing Structures.
 Item I-17 "Cellular Retaining Walls" shall include for Payment, the Wall, all Backfill and required I-22 Material to the limits shown. All I-22 Backfill to be as defined in Sec. I-17.04.
 The Crib Wall shall be a Metal Cellular Retaining Wall as specified in Item I-17 of the Specifications. Details and dimensions of steel Cellular Ret. Wall shall conform to those Manufactured by Armco Drainage & Metal Products Inc. Design "D", Drawing No A-340-B, or approved equal.
 Care shall be exercised not to disturb any existing vegetation outside the work limit of this Bin Type Wall. No disposable Material shall be wasted between sta. 185+00 and sta. 218+00 on the steep right side slope.
 A Calculated Quantity of 450 Sq. Yds. of Item L-9 "Seeding & Protecting" has been entered on Sheet No 62 for Protecting Disturbed Areas at retaining wall.

ESTIMATED QUANTITIES			
ITEM	DESCRIPTION	UNIT	QUANTITY
E-2	Cofferdams, Crips and Sheeting	Lump Sum	Lump Sum
E-2	Excavation for Structures	Cu. Yds.	2167
S-22	Removal of Portions of Existing Structures	Lump Sum	Lump Sum
I-4	6" Perforated Bituminous Coated Corrugated Metal Pipe Sec. M.6.4(h)(c)	Lin. Ft.	165
I-4	6" Helical Corrugated Metal Pipe, Sec. M.6.4(h) without perforations, Outlet for Underdrains	Lin. Ft.	28
I-5	6" 60° Pipe Special, Sec. M.6.4(h) without perforations	Each	1
I-17	Galvanized Metal Cellular Retaining Walls	Sq. Ft.	3627

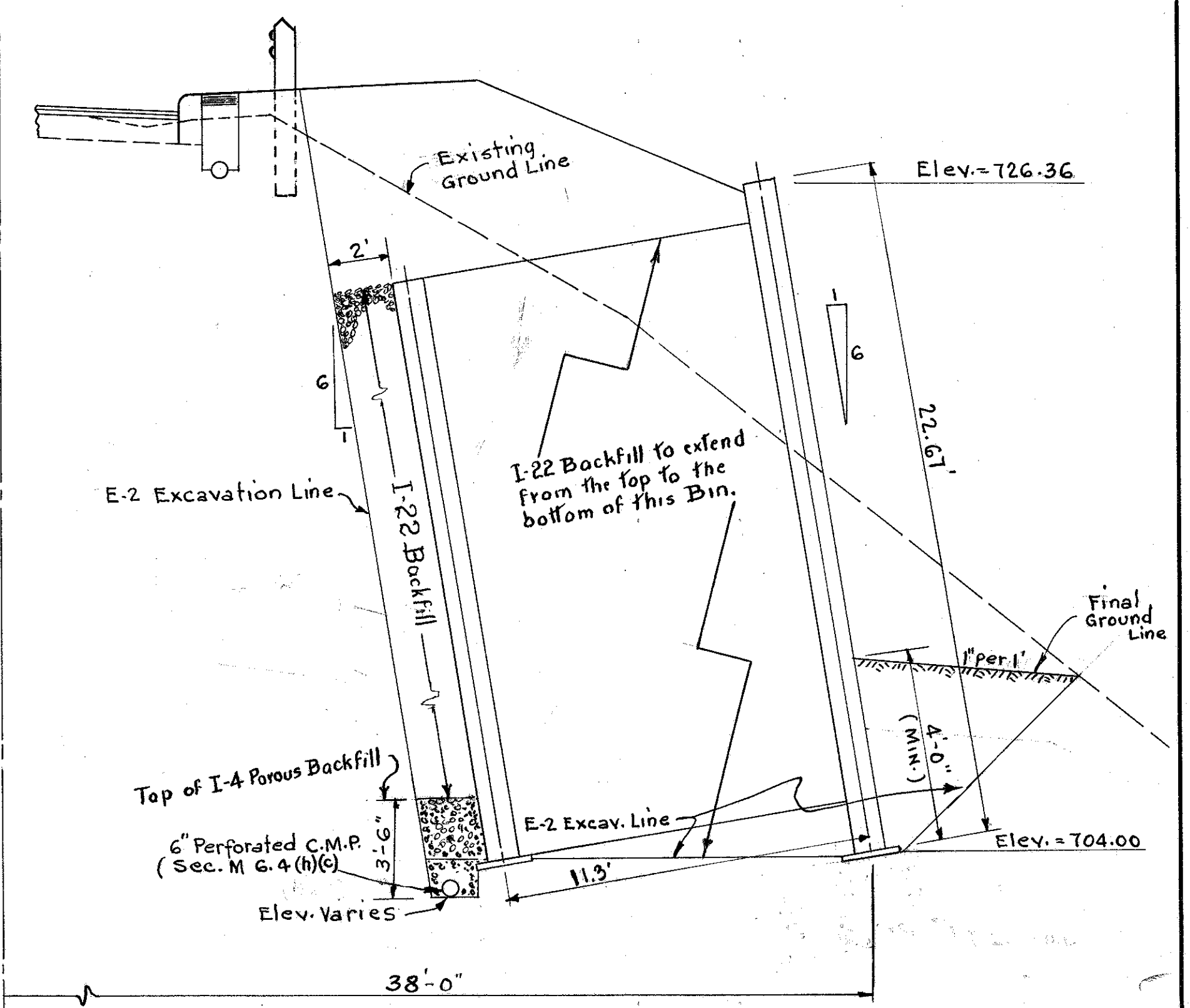


PARTIAL PLAN

16 Sections of wall @ 10'-0" each = 160'



PARTIAL SOUTH ELEVATION
SCALE 1/4" = 1'-0"



TYPICAL SECTION
STA. 207+01.51 TO STA. 208+65
SCALE 1/4" = 1'-0"