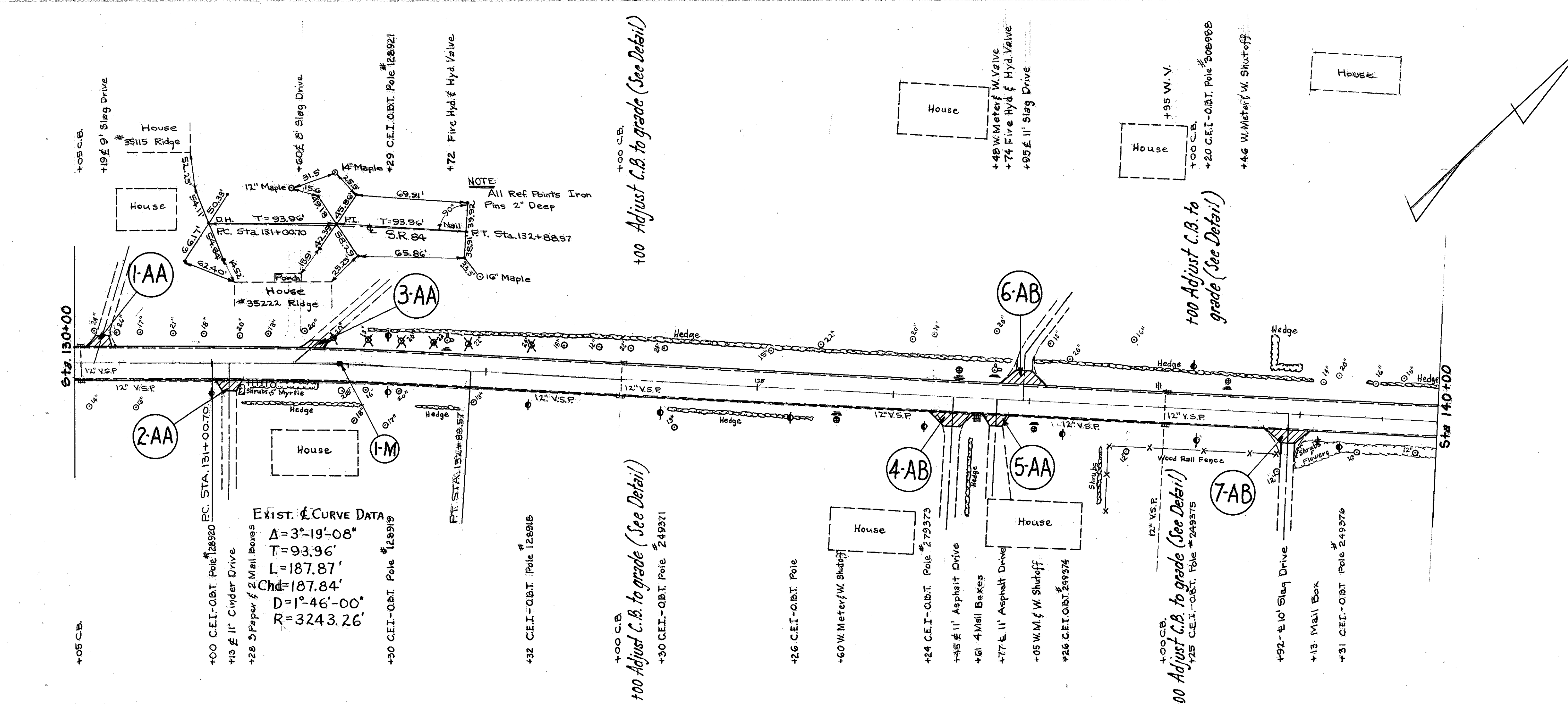


LAK. 84 (3.27-7.81)
LAKE COUNTY



EXIST. CURVE DATA
 $\Delta = 3^{\circ}19'08''$
 $T = 93.96'$
 $L = 187.87'$
 $Chd = 187.84'$
 $D = 1^{\circ}46'00''$
 $R = 3243.26'$

Station	Left	Center	Right
782.73	782.78	782.97	782.78
782.73	782.91	782.94	782.71
782.63	783.04	782.84	782.64
782.51	782.92	782.72	782.52
782.31	782.72	782.52	782.32
782.01	782.42	782.22	782.02
781.74	782.15	781.95	781.75
781.36	781.69	781.57	781.41
780.95	781.22	781.16	781.08
780.64	780.75	780.94	780.75
780.32	780.57		
780.06	780.26		
779.71	779.95		
779.37	779.63		
779.09	779.31		
778.83	779.09		
778.73	779.05		
778.87	779.14		
779.24	779.60		
779.75	779.97		
780.09	780.15	780.34	780.15

ADD .04 TO PROPOSED ELEVATIONS

Excavation	259	Cu. Yds.
Embankment	525	Cu. Yds.
Emb + 22%	641	Cu. Yds.

ESTIMATED QUANTITIES

DESCRIPTION	5" Crush'd 2" Asph. Aggreg. Conc. Base Course	5" Crush'd 2" Asph. Aggreg. Conc. Surface Course	Mon. Adjust CB. To Assembly in place (See Detail)	Adjust to Grade Water Hydrants & Valves Each
DRIVES 1-AA to 7-AB	118	118		5
MONUMENT BOXES I-M			1	
WATER VALVES				5
MANHOLES				4
HYDRANTS & HYD. VALVES			4	2
CATCHBASINS				2
TOTALS	118	118	1	5