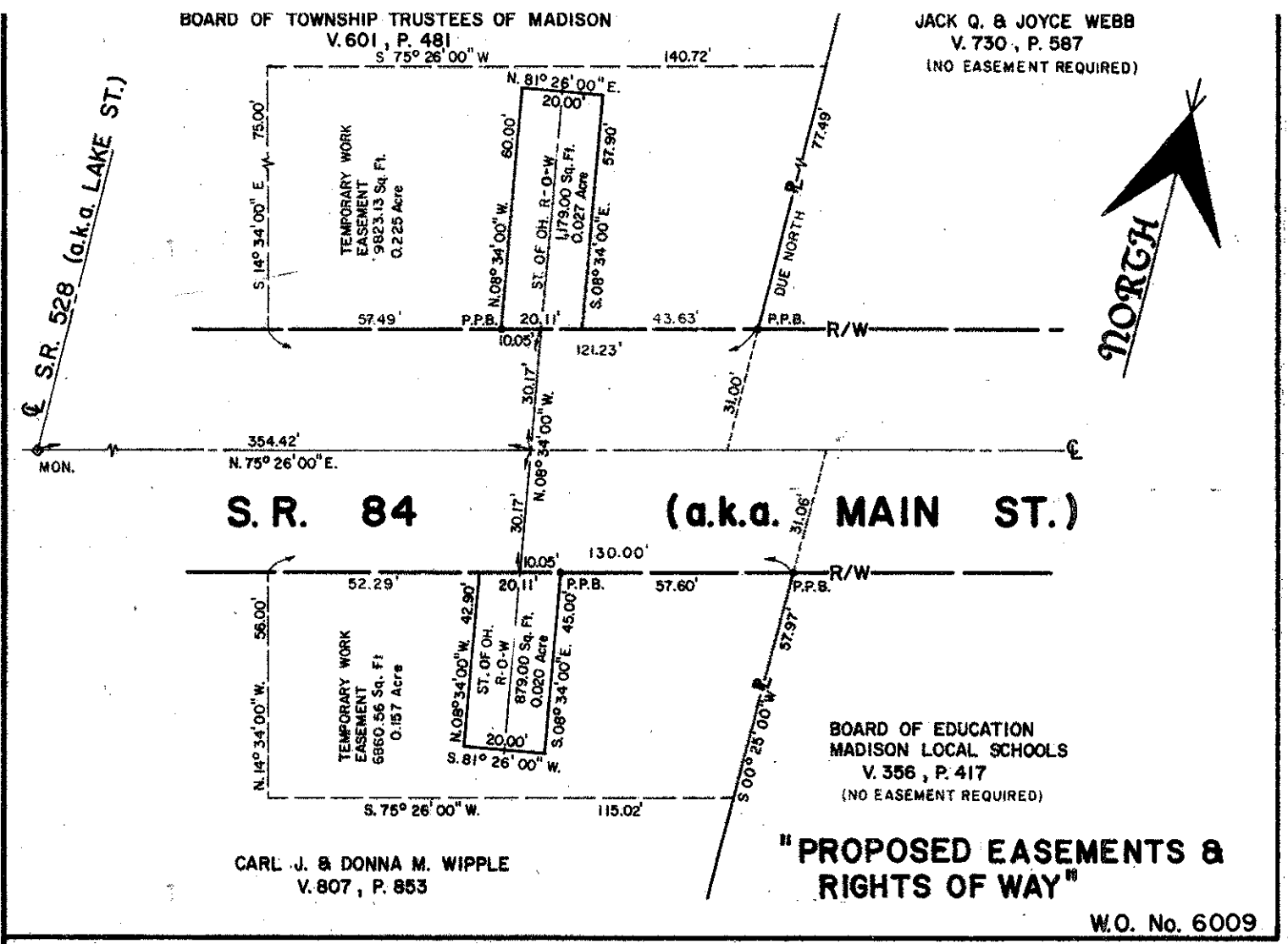
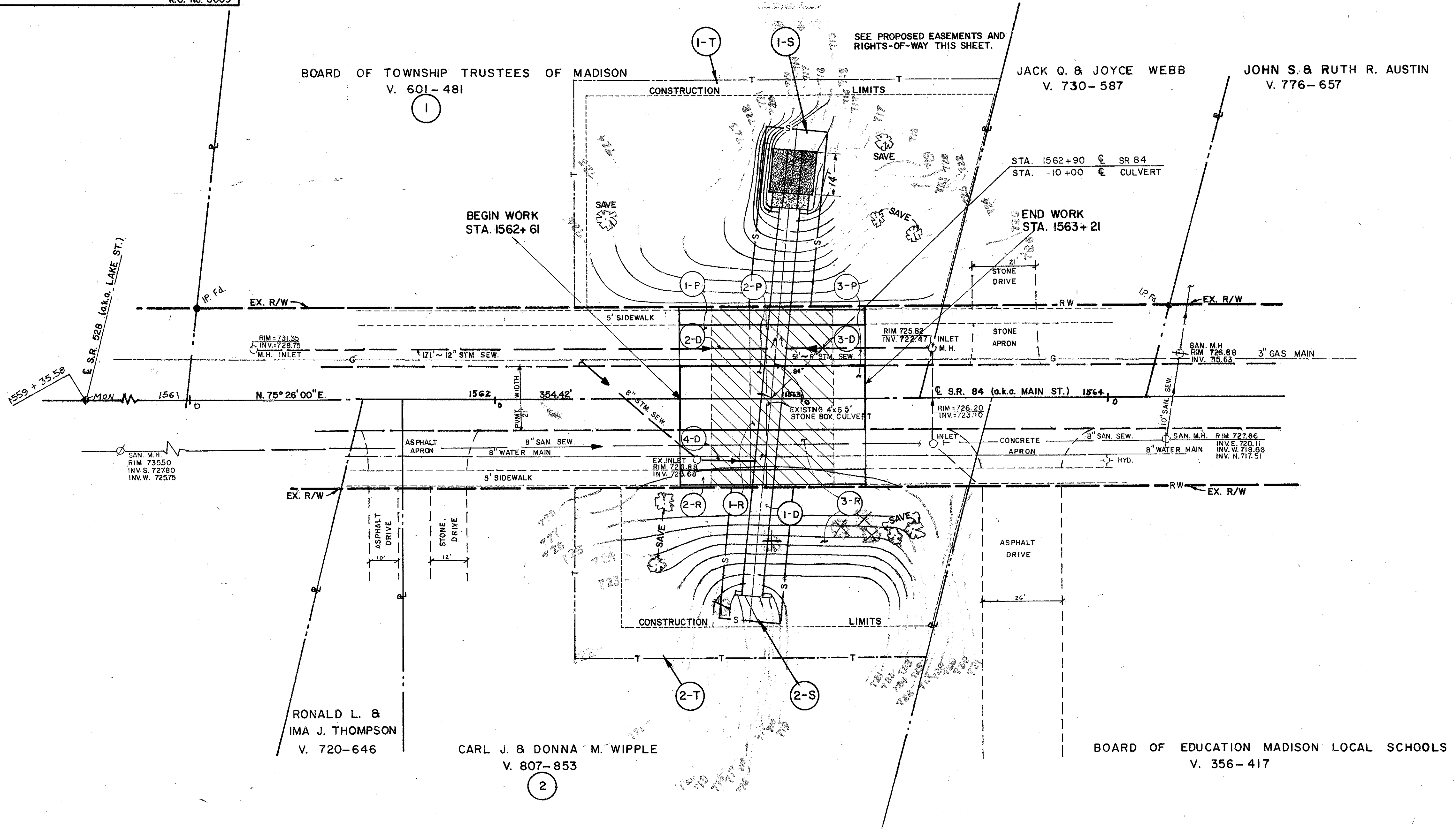


PLAN NO. BR-98-84
 82-LAK-190



NOTE: Excavation area shall be a minimum width of 22' from Sta. 1562+80 to Sta. 1563+02.
 All calculations in this plan are based on a width of 40' from Sta. 1562+71 to Sta. 1563+11.



PARCEL NO.	OWNER	DEED AREA	TAKE	RESIDUE	DEED RECORD	REMARKS
1-S	BOARD OF TRUSTEES OF MADISON TOWNSHIP	0.870 AC.	0.027 AC.	0.870 AC.	V. 601 P. 481	TO STATE OF OHIO
1-T	BOARD OF TRUSTEES OF MADISON TOWNSHIP		0.225 AC.			GRADING, TEMPORARY EASEMENT
2-S	CARL J. & DONNA M. WIPPLE	0.651 AC.	0.020 AC.	0.651 AC.	V. 807 P. 853	TO STATE OF OHIO
2-T	CARL J. & DONNA M. WIPPLE		0.157 AC.			GRADING, TEMPORARY EASEMENT

SUMMARY OF ADDITIONAL RIGHT-OF-WAY REQUIRED

DEBEVEC · SALO & ASSOCIATES, INC.
 CIVIL ENGINEERS · SURVEYORS
 PAINESVILLE OHIO

S.R. 84 CULVERT REPLACEMENT
 R/W PLAN
 MADISON VILLAGE, OHIO

REVISIONS: 4, 3, 2, 1
 DRAWN BY DATE CHK'D BY DATE
 SCALE
 FILE #
 W.O. #

DEBEVEC · SALO & ASSOCIATES, INC.
 CIVIL ENGINEERS · SURVEYORS