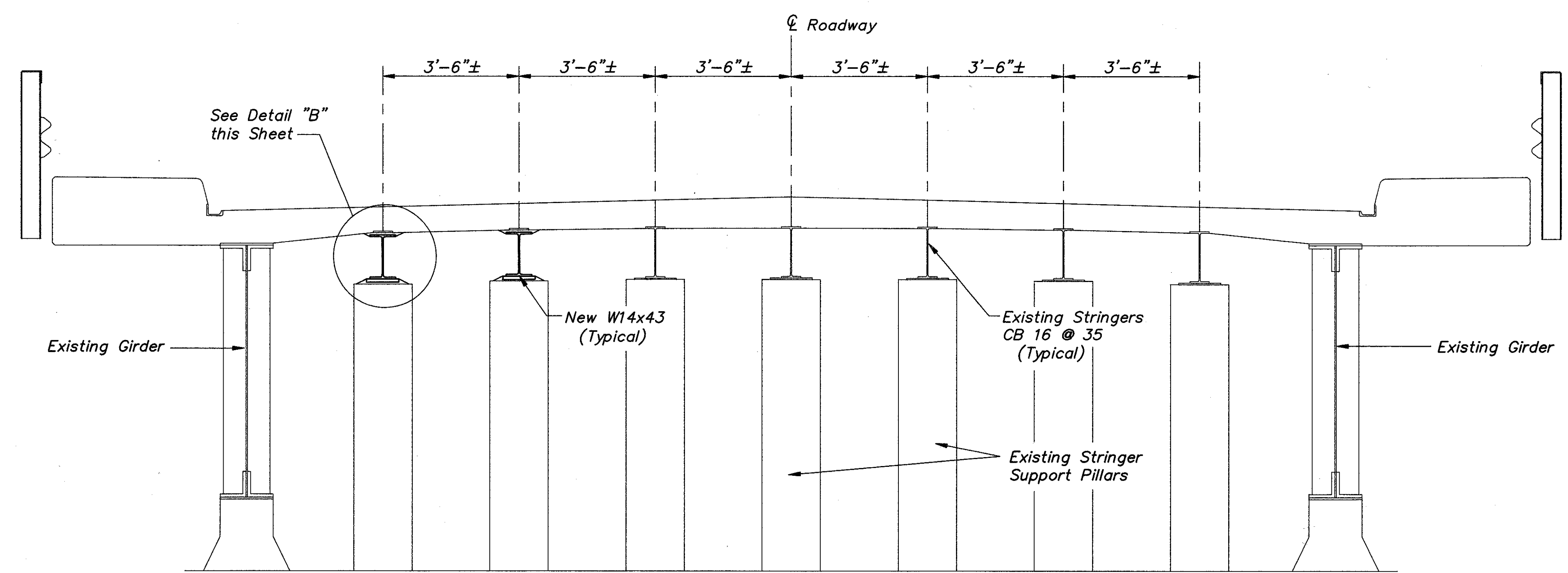
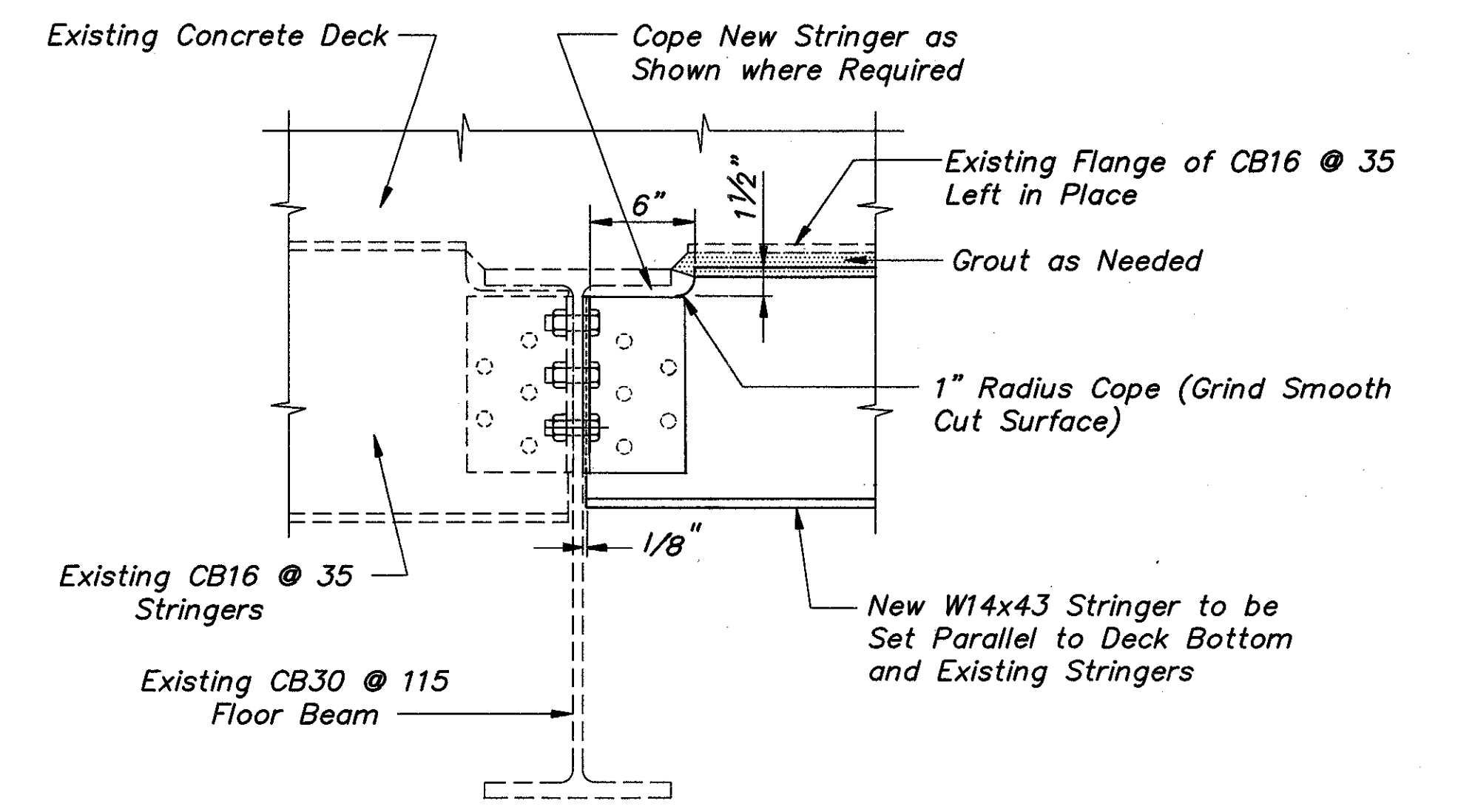


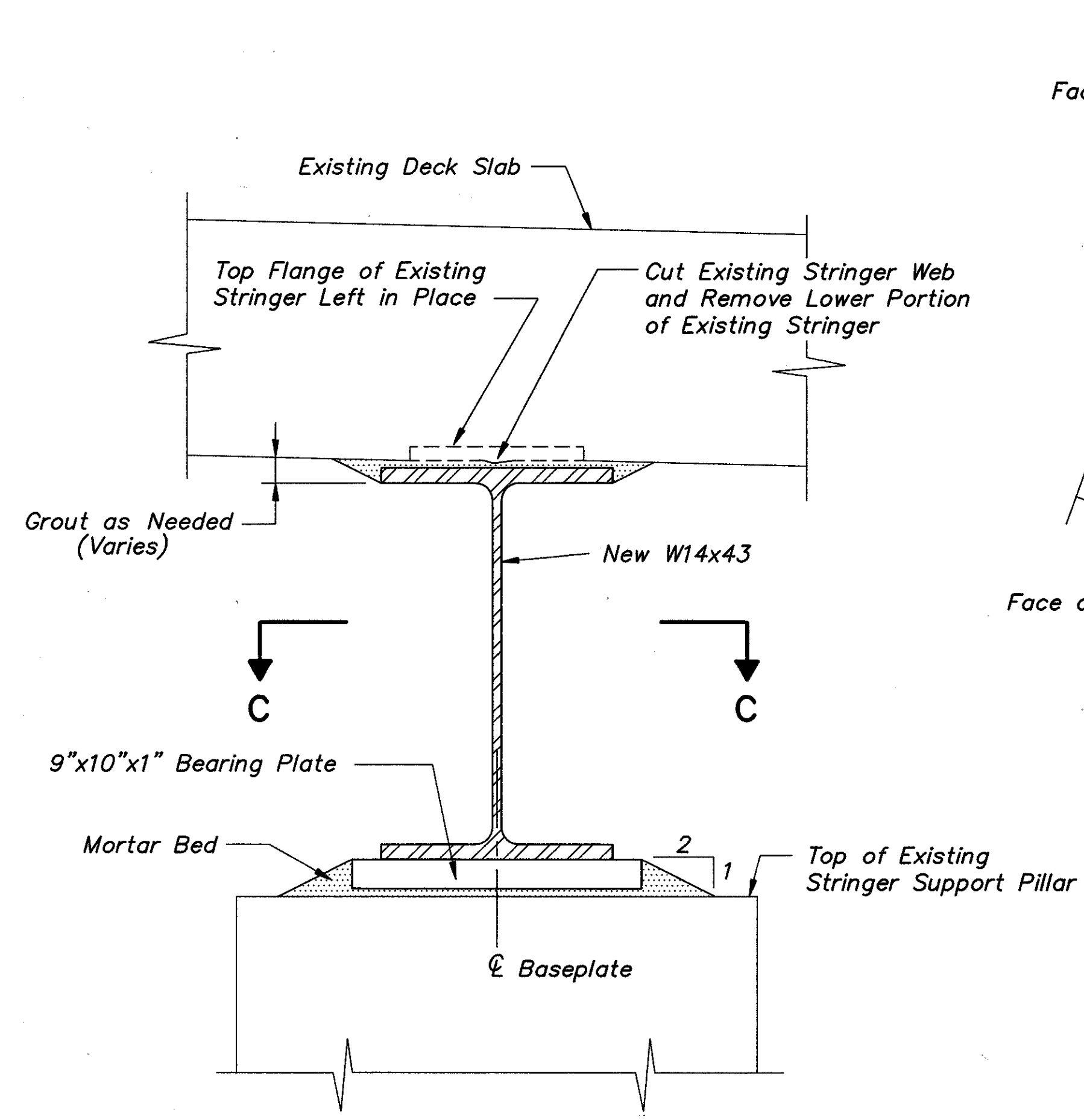
BR-43-88



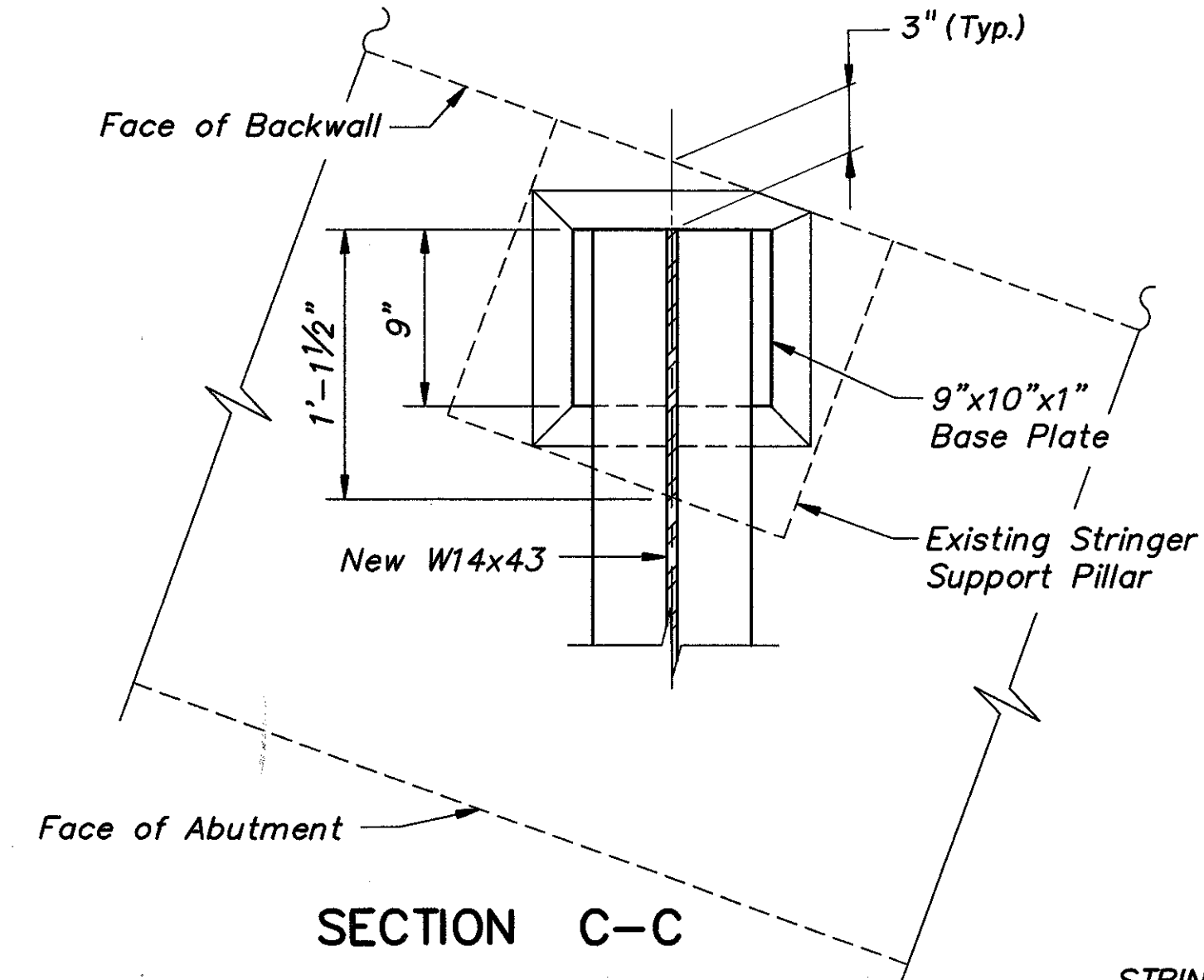
**SECTION B-B**  
**TYPICAL SECTION AT ABUTMENTS**  
 (Forward Abutment Shown - See Steel Framing Plan for the Number of Stringers being Replaced)



**CONNECTION DETAIL TO EXISTING FLOOR BEAMS AT ABUTMENTS**



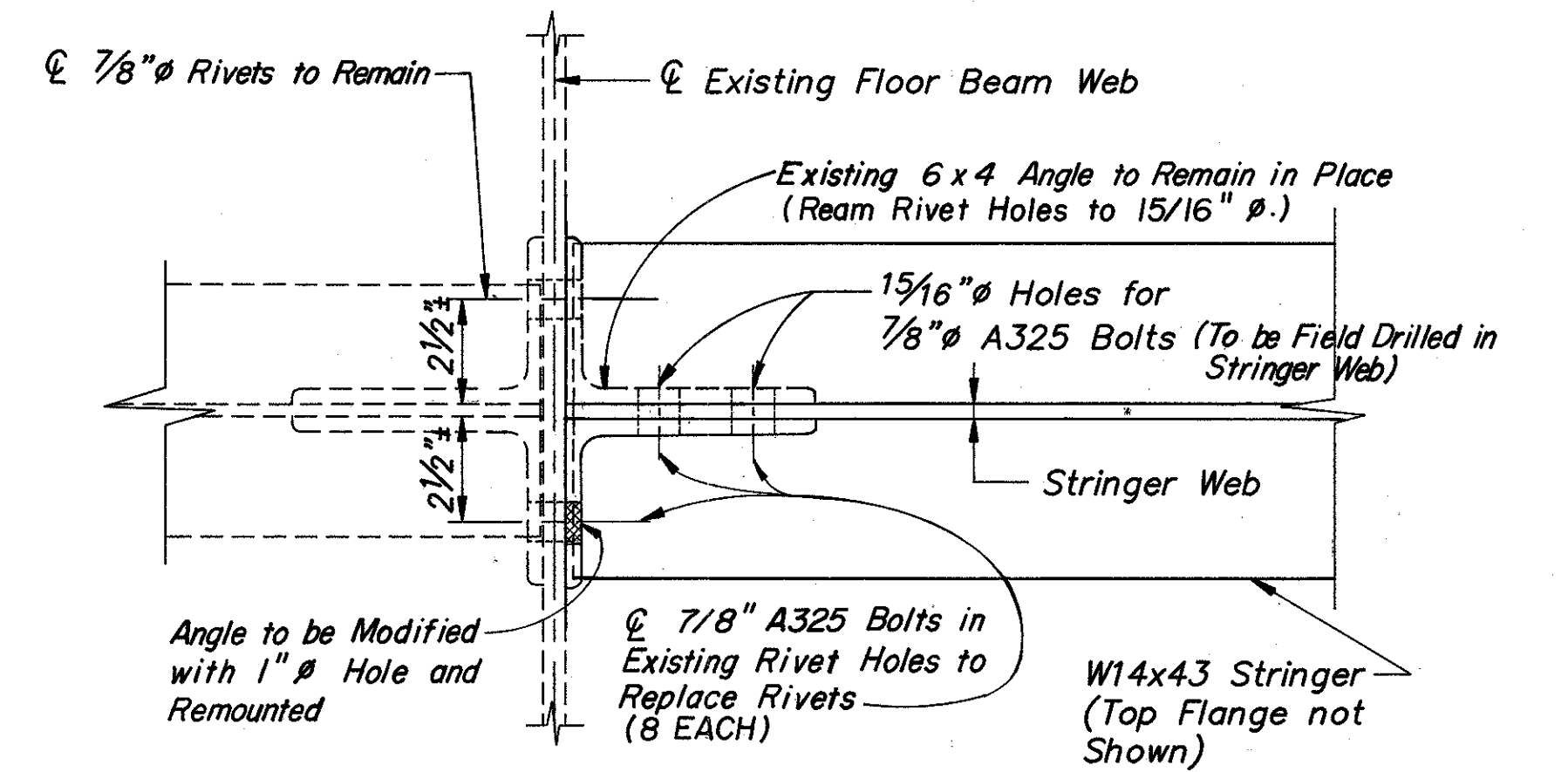
**DETAIL "B"**



**SECTION C-C**

**STRINGER REPAIR SEQUENCE AT ABUTMENTS**

1. Remove the Five (5) Rivets from the Existing 6 x 4 Angle to Stringer Web Connection.
2. Remove the Existing Stringer by Cutting Off the Web Flush with the Bottom of the Top Flange. Remove Existing Baseplate.
3. Remove One Connection Angle by Removing the Three (3) Floor Beam to Connection Angle Rivets. Modify the Removed Angle by Reaming the Three (3) Holes on the Four-Inch Leg to One-Inch Diameter to Accommodate Fit-up. Ream All Other Holes for 7/8" Bolts.
4. Form Mortar Bed and Install Baseplate.
5. Locate and Field Drill Proposed Stringer Web Holes Using the Removed Angle as a Template.
6. Install the Modified Connection Angle.
7. Tighten all Bolted Connections.
8. Place Stringer Haunch Forms.
9. Maintain Two-Way Traffic on One Lane of the Structure.
10. Grout Stringer Haunches under the Closed Portion of Deck.
11. Repeat Procedure for the Remaining Stringers at Abutments as Indicated on the Steel Framing Plan on Sheet 3/5



**CONNECTION ANGLE DETAILS AT ABUTMENTS**

NOTE: ALL WORK SHOWN ON THIS SHEET SHALL BE PAID UNDER ITEM SPECIAL- STRINGER REPAIR

<b>CT Consultants, Inc.</b> Engineers • Architects • Planners Willoughby • Mentor • North Canton • Steubenville • Lorain						5 / 5
<b>STRINGER REPAIR</b> <b>DETAILS AT ABUTMENTS</b> <b>BRIDGE NO. LAK-84-1888</b> <b>OVER GRAND RIVER</b> LAKE COUNTY						
DESIGNED	DRAWN	TRACED	CHECKED	REVIEWED	DATE	REVISED
JEA	R.L.B.	R.L.B.	J.P.R.	RJC	10/7/88	DWL 10-14-88