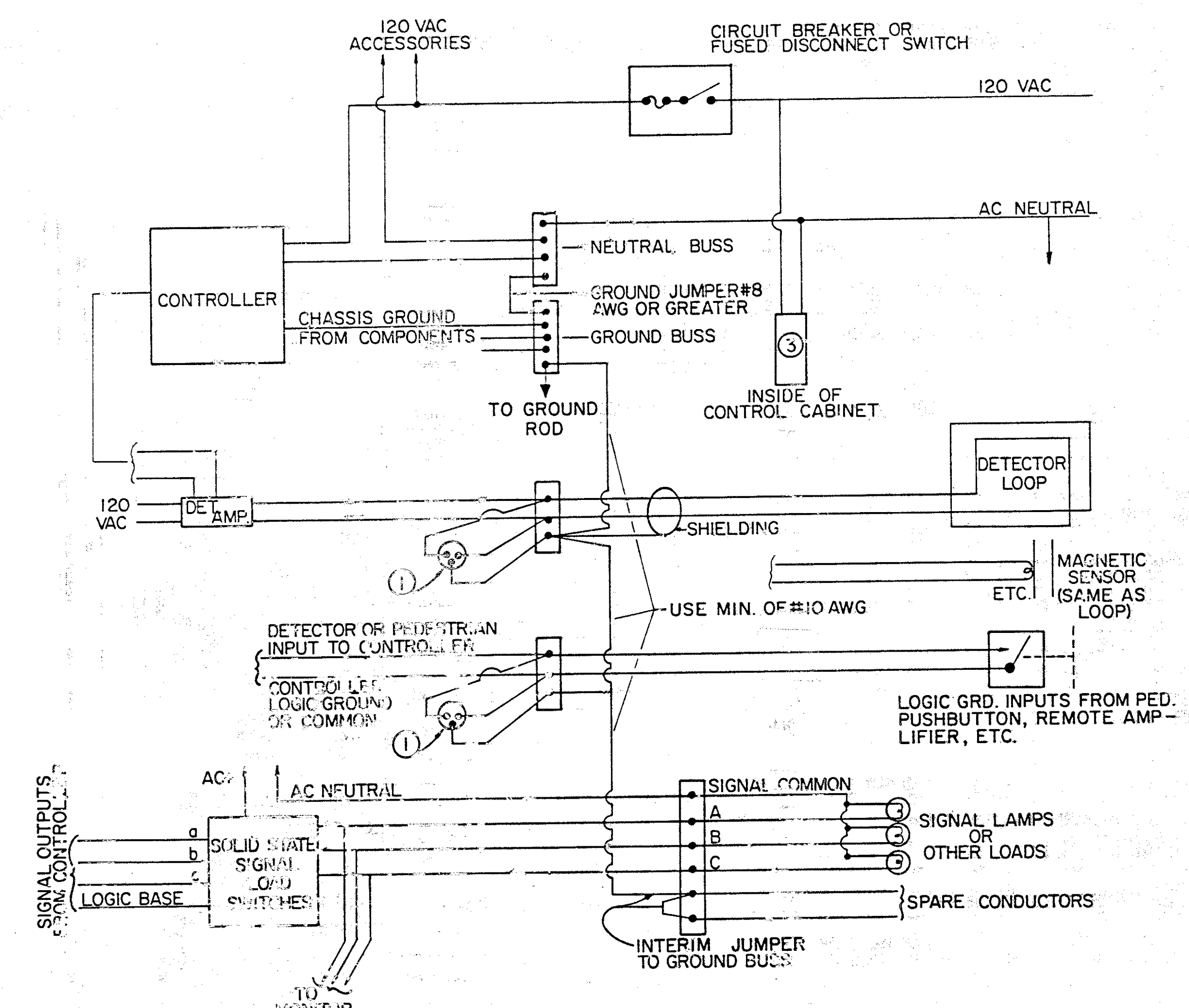
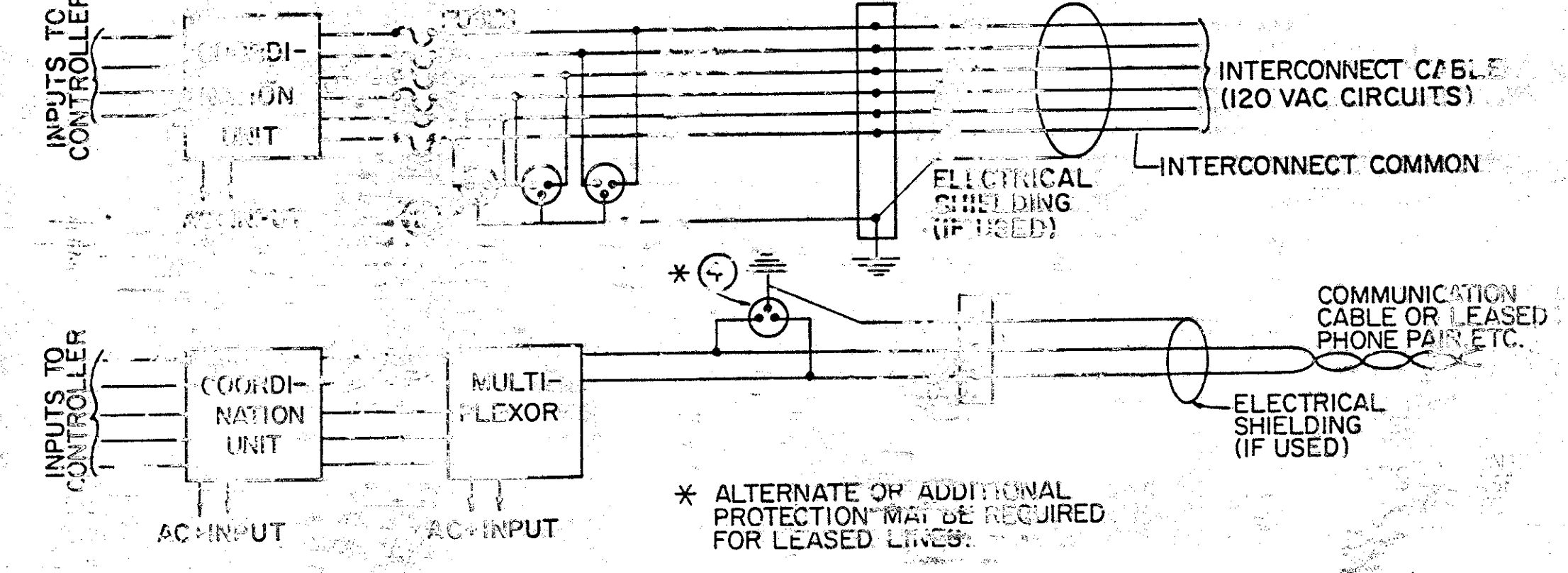


MICROFILMED
APR 20 1984



- ① 3 ELECTRODE GAS TUBE TII 340A-20 OR SURRESTOR SRA-16 OR EQUIVALENT (FOR LOOP AMP NOT EXCEEDING 20V ON LOOP CIRCUIT)
- ② 3 ELECTRODE GAS TUBE TII 317B OR SURRESTOR SFA-60A OR EQUIVALENT
- ③ POWER LINE ARRESTOR (ELECTRODE) TII 4/2A-(20) OR SURRESTOR SPA 300
NOTE: FIRST CONDUCTORS MUST BE GROUNDED AT BOTH ENDS AND ALL ARRESTORS SHOULD BE MOUNTED AS CLOSE AS POSSIBLE TO THE FIRST TERMINATION OF INCOMING PROTECTED LINE.
- ④ 3 ELECTRODE GAS TUBE TII 317A OR SURRESTOR SRA-16, 64 OR EQUIVALENT



LIGHTNING PROTECTION SYSTEM