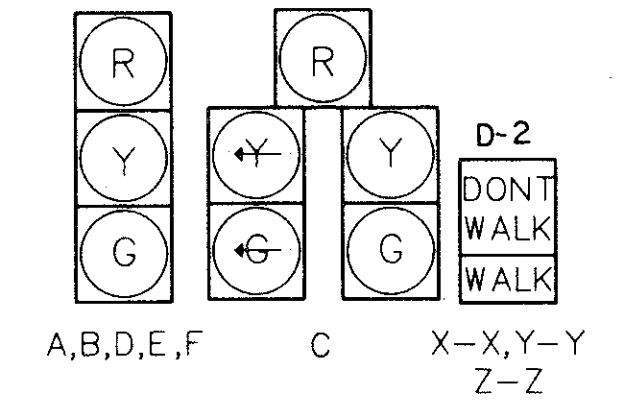


SIGNAL HEAD	Ø1		Ø2		Ø3		FLASH	DWELL
	R/W	CLEAR	R/W	CLEAR	R/W	CLEAR		
A	G	Y	R	R	R	R	Y	G
B	G	Y	R	R	R	R	Y	G
C	G	G	G	Y	R	R	Y	G
D	G	G	G	Y	R	R	Y	G
E	R	R	R	R	R	G	Y	R
F	R	R	R	R	R	G	Y	R
X-X	W	FDW	DW	DW	DW	DW	DW	OUT DW
Y-Y	DW	DW	DW	DW	DW	W	FDW	DW OUT DW
Z-Z	W	FDW	DW	DW	DW	DW	DW	OUT DW

- 1.) Y IF PHASE Ø3 NEXT 3.) G IF PHASE Ø1 NEXT
 2.) R IF PHASE Ø3 NEXT 4.) G/Y IF PHASE Ø1 NEXT

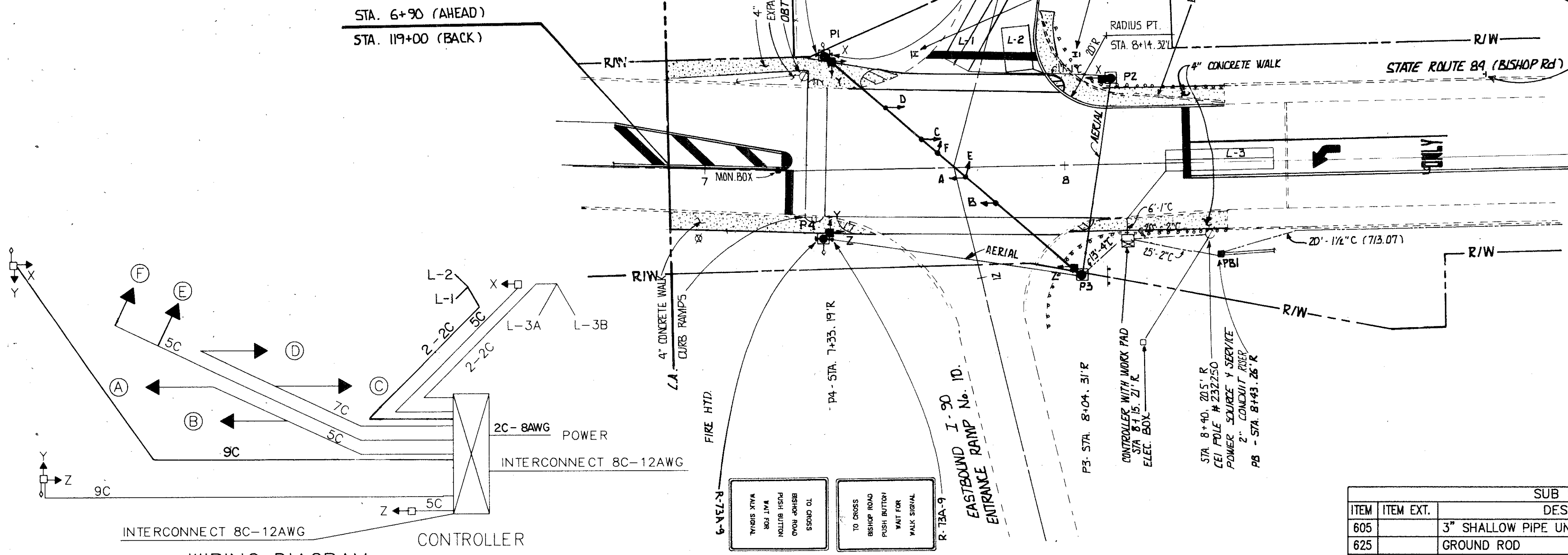
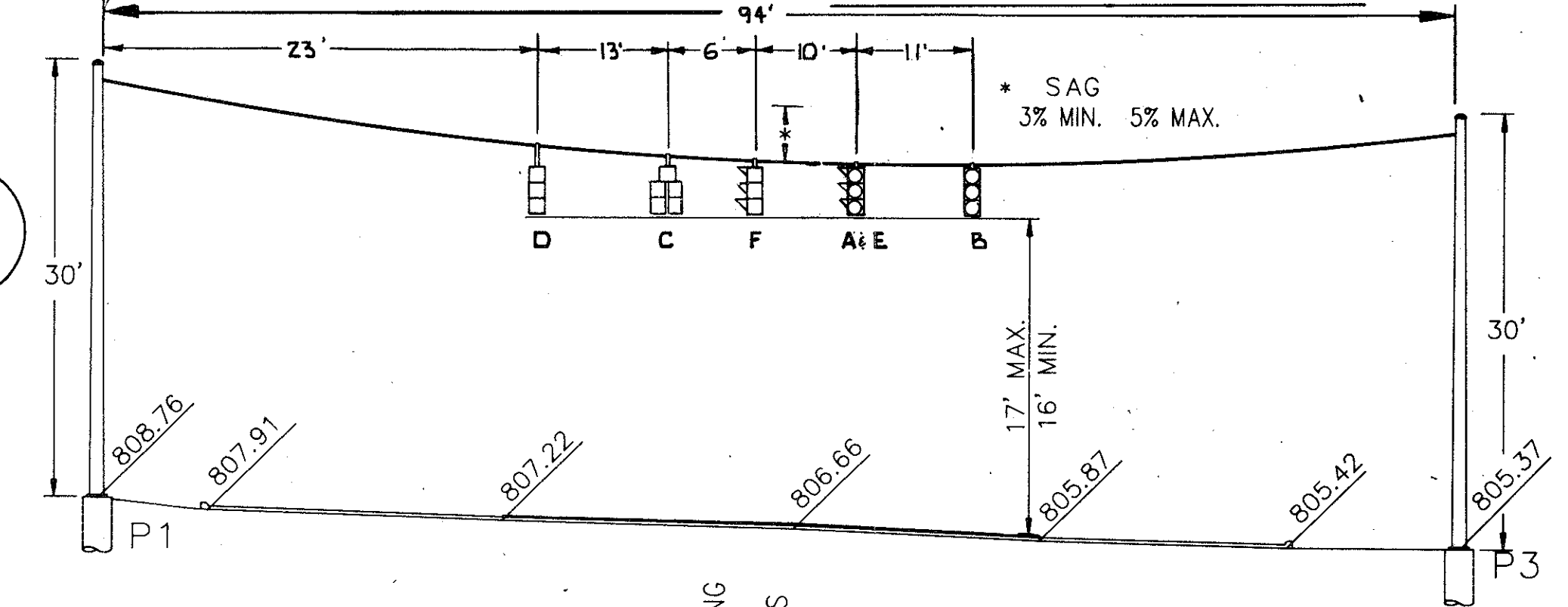
SIGNAL SEQUENCE CHART



- LEGEND
- ⊙ STRAIN POLES & PEDESTALS
 - ⊙ PEDESTRIAN SIGNAL HEADS
 - ⊙ PEDESTRIAN PUSHBUTTONS
 - ⊙ LOOP DETECTORS
 - ⊙ TRAFFIC CONTROL SIGN
 - ⊙ VEHICULAR SIGNAL HEAD
 - SPAN WIRE
 - CONDUIT
 - PULL BOX
 - ⊙ CONTROLLER W/ WORK PAD
 - ⊙ UTILITY POLE
 - *** GUARD RAIL

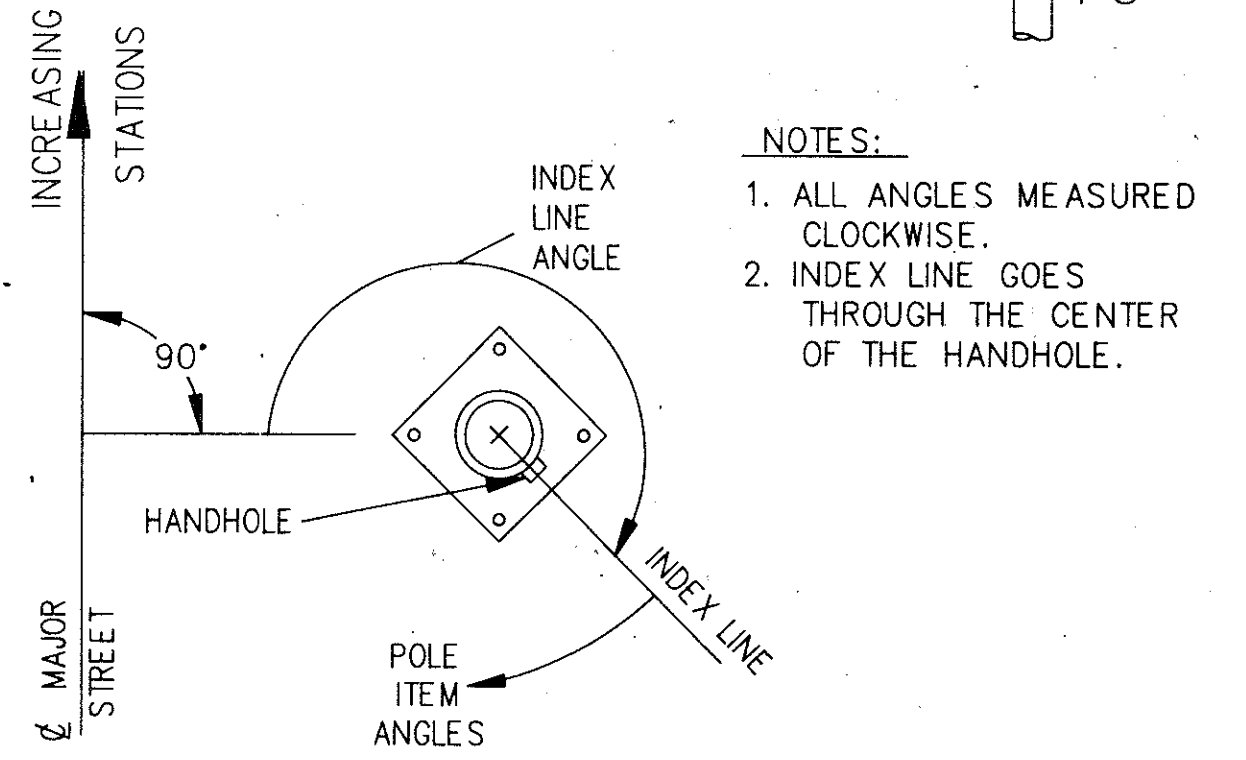
FUNCTION	Ø1	Ø2	Ø3
INITIAL GREEN	—	12.0	12.0
MINIMUM GREEN	30.0	—	—
VEHICLE EXTENSION	—	3.0	4.0
MAXIMUM GREEN I	—	20.0	20.0
MAXIMUM GREEN II	—	25.0	40.0
PEDESTRIAN WALK	7.0	—	7.0
PEDESTRIAN CLEARANCE	12.0	—	8.0
VEHICLE YELLOW CLEARANCE	3.0	3.0	3.0
VEHICLE ALL RED CLEARANCE	1.0	—	2.0
RE CALL	ON	OFF	OFF
MEMORY	ON	OFF	OFF

SIGNAL TIMING CHART



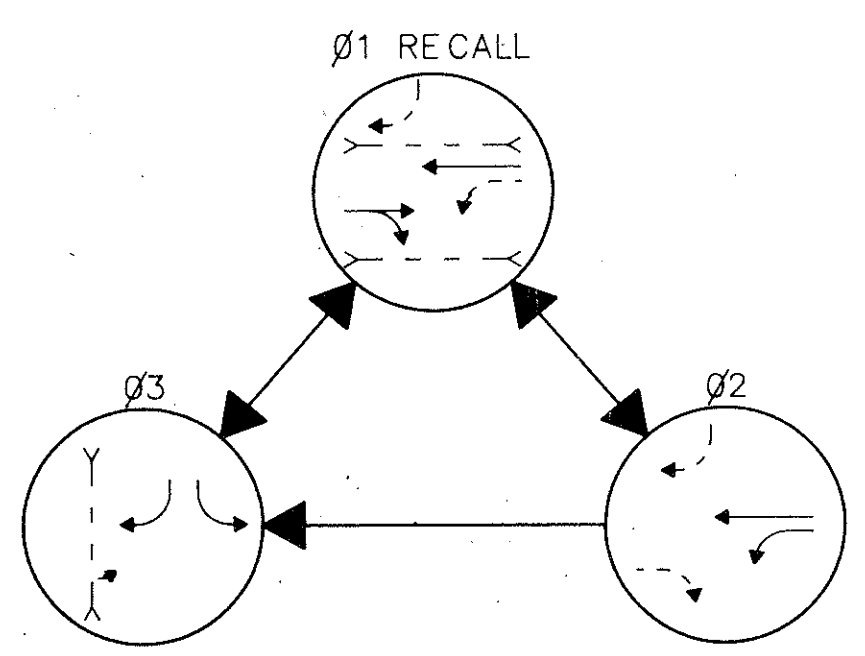
WIRING DIAGRAM

POLE NO.	DESIGN NO.	POLE HEIGHT (FT.)	ANGLES FROM INDEX LINE (DEGREES)			
			INDEX LINE ANGLE (DEGREES)	PEDESTRIAN SIGNALS	PEDESTRIAN PUSHBUTTONS	CABLE ENTRANCE (12" FROM TOP) 2" CAPPED CONDUIT ELL (FUTURE USE)
P1	5	30	90°	225°	90°	222°
P2	1	20	270°	180°	—	100°
P3	5	30	90°	225°	—	222°
P4	1	20	270°	141°	270°	190°



- NOTES:
- ALL ANGLES MEASURED CLOCKWISE.
 - INDEX LINE GOES THROUGH THE CENTER OF THE HANDHOLE.

FOR PAYMENT MARKING QUANTITIES SEE SHEET No. 5



PHASING DIAGRAM

LOOP	SIZE	TURNS	MODE	DELAY	PHASE	REMARK	DELAY INHIBITED
L-1	8X25	2-4-2	PRESENCE	8.0	Ø3	QUADRAPOLE	Ø3
L-2	8X12	3	PRESENCE	5.0	Ø3		Ø3
L-3	6X30	2-4-2	PRESENCE	8.0	Ø2	QUADRAPOLE	Ø2

LOOP DETECTOR CHART

ITEM	ITEM EXT.	DESCRIPTION	QTY	UNIT
605		3" SHALLOW PIPE UNDERDRAIN	15	L.F.
625		GROUND ROD	5	EA.
625		PULL BOX, 713.08, 18"	1	EA.
625		TRENCH	78	L.F.
625		CONDUIT, 713.04, 1"		
625		CONDUIT, 713.07, 1 1/2"	20	L.F.
625		CONDUIT, 713.04, 2"	45	L.F.
625		CONDUIT, 713.04, 4"	13	L.F.
630		SIGN SUPPORT ASSEMBLY, BRIDGE MOUNTED	1	EA.
630		SIGNS, FLAT SHEET, TYPE G	9.0	S.F.
630		REMOVAL OF GROUND MOUNTED SIGNS	2	EA.
632		VEHICULAR SIGNAL HEAD, 3-SECTION, 12" LENS, 1-WAY, AS PER PLAN	3	EA.
632		VEHICULAR SIGNAL HEAD, 3-SECTION, 12" LENS, 2-WAY, AS PER PLAN	1	EA.
632		VEHICULAR SIGNAL HEAD, 5-SECTION, 12" LENS, 1-WAY, AS PER PLAN	1	EA.
632		PEDESTRIAN SIGNAL HEAD, TYPE D2, AS PER PLAN	6	EA.
632		PEDESTRIAN PUSHBUTTON	2	EA.
632		LOOP DETECTOR UNIT, DELAY & EXTEND, AS PER PLAN	3	EA.
632		LOOP DETECTOR PAVEMENT CUTTING	274	L.F.
632		CONCRETE FOR ANCHOR BASE FOUNDATION	7.4	C.Y.
632		STRAIN POLE, TYPE TC-81.10, DESIGN NO. 1	2	EA.
632		STRAIN POLE, TYPE TC-81.10, DESIGN NO. 5	2	EA.
632		CABLE SUPPORT ASSEMBLY	4	EA.

ITEM	ITEM EXT.	DESCRIPTION	QTY	UNIT
632		MESSANGER WIRE, 7-STRAND, 3/8" DIA. WITH ACCESSORIES	270	L.F.
632		SIGNAL CABLE, 5-CONDUCTOR, NO. 14 AWG	394	L.F.
632		SIGNAL CABLE, 7-CONDUCTOR, NO. 14 AWG	132	L.F.
632		SIGNAL CABLE, 9-CONDUCTOR, NO. 14 AWG	317	L.F.
632		CONDUIT RISER, 2" DIA.	1	EA.
632		LOOP DETECTOR WIRE TYPE "E"	724	L.F.
632		LOOP DETECTOR LEAD-IN CABLE	266	L.F.
632		POWER CABLE, 2-CONDUCTOR NO. 8 AWG	50	L.F.
632		POWER SERVICE	1	EA.
632		COVERING OF VEHICULAR SIGNAL HEADS	6	EA.
633		CONCRETE FOR CABINET FOUNDATION	1	C.Y.
633		CONTROLLER, ACTUATED, 3 PHASE, SOLID STATE DIGITAL, MICROPROCESSOR, AS PER PLAN	1	EA.
633		COORDINATOR, SOLID STATE, SECONDARY, SEPARATE UNIT TYPE	1	EA.
633		CONTROLLER WORK PAD	8.3	S.F.
202		CURB REMOVED	60	L.F.
608		4" CONCRETE WALK	1000	S.F.
608		CURB RAMPS	6	EA.
609		CURB, TYPE 6	16	L.F.
609		INTEGRAL CURB	60	L.F.

THESE QUANTITIES HAVE BEEN CARRIED TO THE GENERAL SUMMARY SEE SHEET No. 5