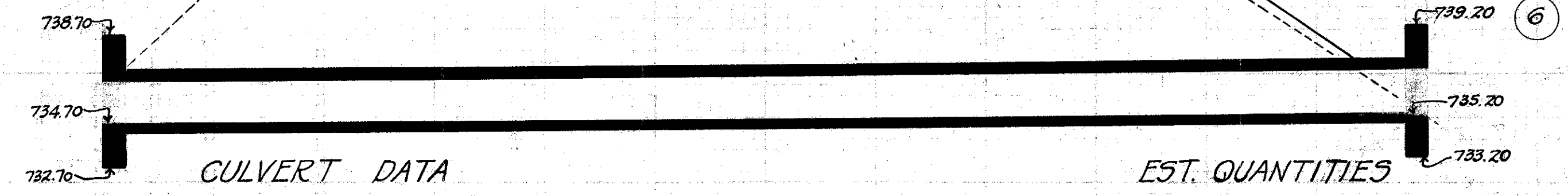
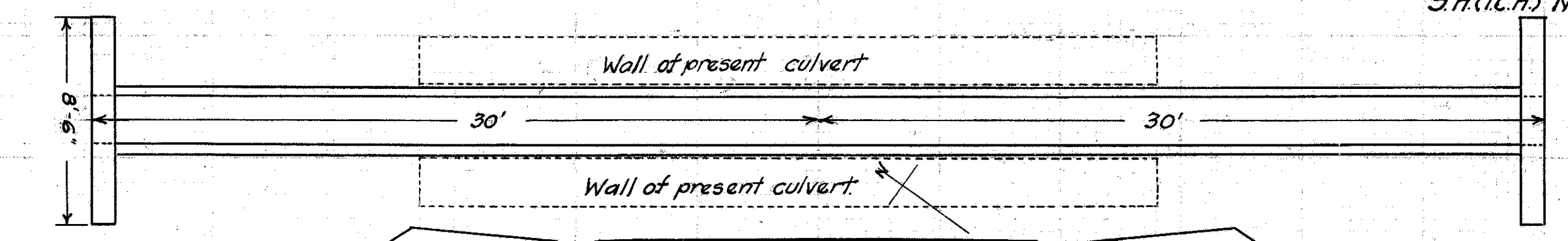


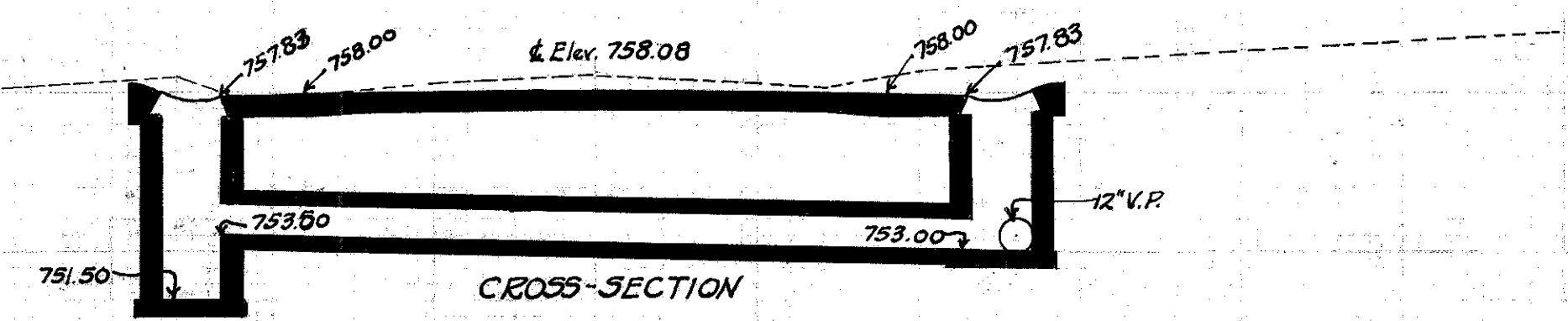
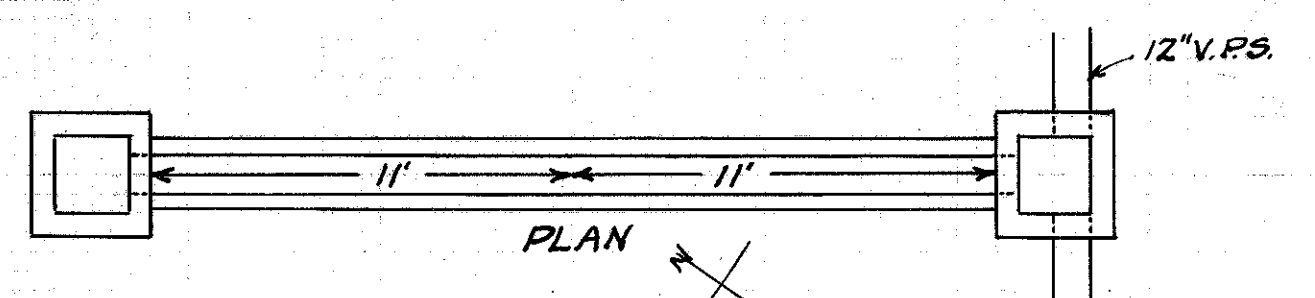
CULVERT DATA
 Type: Std. V.S.P. culvert Dr. #300
 Size: 12" x 24'
 Work Req.: Build 12" x 24' Std. V.P.(enc) culvert
 C.B. on L. I.B. on R.
 Drawn by Cumings + Plummer Checked by
 Date 3/31/28 Date Div'n. Engr.

EST. QUANTITIES
 Exc. 8.8 cu.yds.
 Con. 1-8 2.38 cu.yds.
 12" V.P. 24 lin.ft.
 C.B. 1
 I.B. 1
 Sta. 24+0



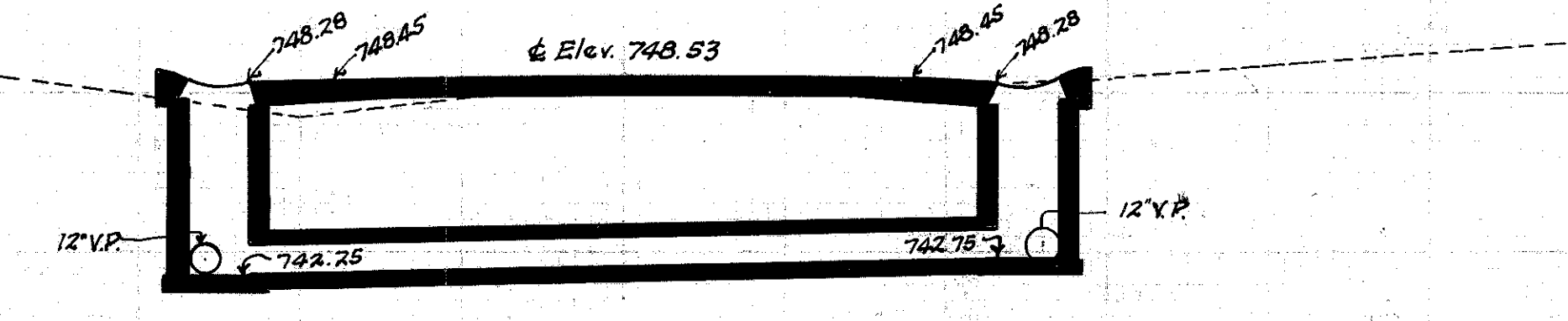
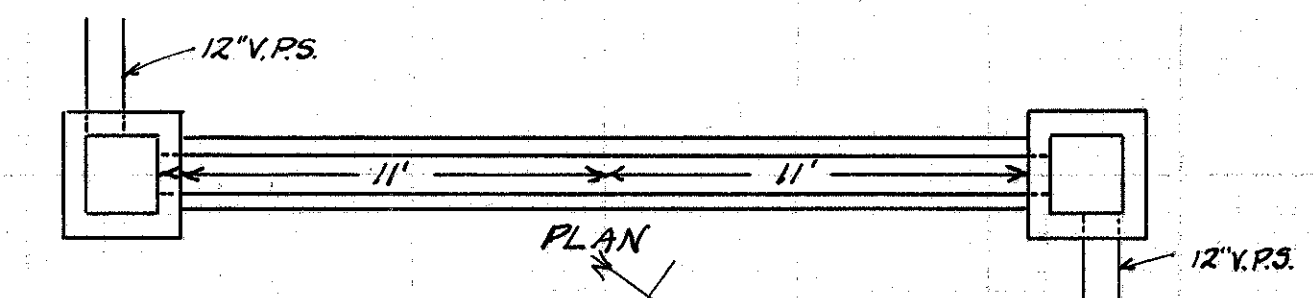
CULVERT DATA
 Type: Std. V.S.P. culvert Dr. #300
 Size: 24" x 60'
 Work Req.: Remove coverstones of present culvert and build 24" x 60' Std. V.P.(enc) culvert Hw. R+L
 Drawn by Cumings + Plummer Checked by
 Date 3/31/28 Date Div'n. Engr.

EST. QUANTITIES
 Exc. 16 cu.yds.
 Con. 1-8 11.95 cu.yds.
 Con. 1-5 1/2 3.5 cu.yds.
 Reinf. Steel 105 lbs.
 24" V.P. 60 lin.ft.
 Stone Mss. Removed 10 cu.yds.
 Sta. 33+20



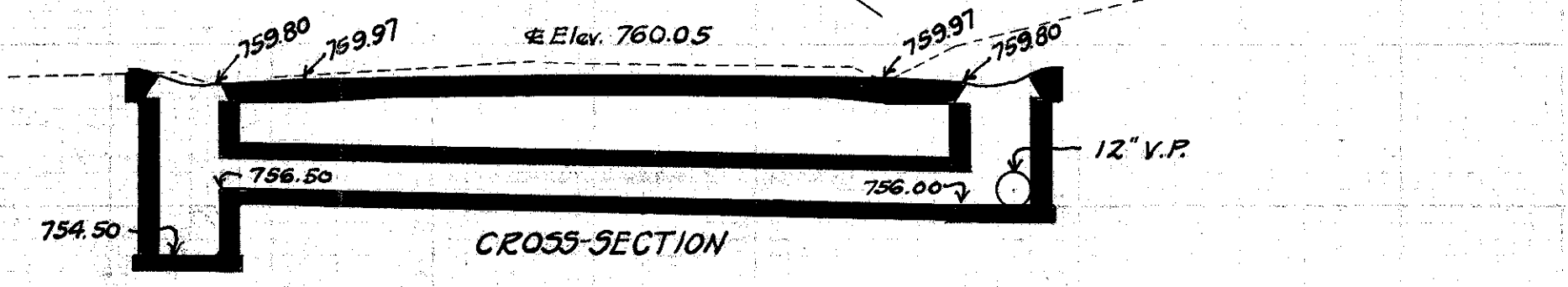
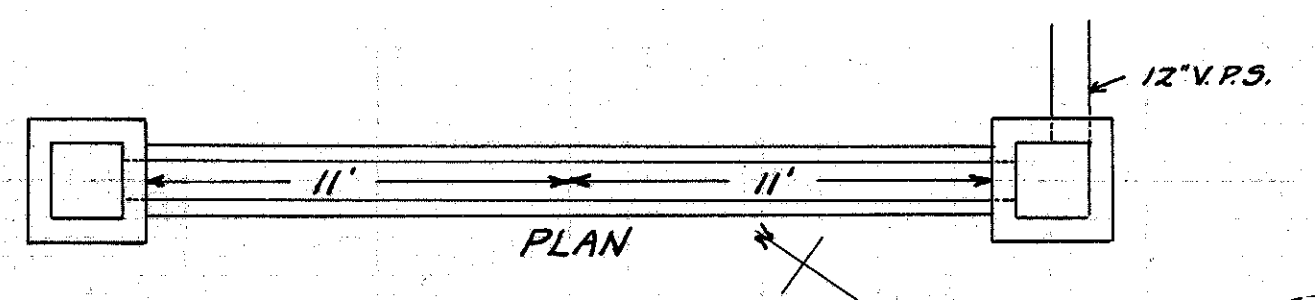
CULVERT DATA
 Type: Std. V.S.P. culvert Dr. #300
 Size: 12" x 24'
 Work Req.: Build 12" x 24' Std. V.P.(enc) culvert
 I.B. on R. C.B. on L.
 Drawn by Cumings + Plummer Checked by
 Date 3/31/28 Date Div'n. Engr.

EST. QUANTITIES
 Exc. 8.7 cu.yds.
 Con. 1-8 2.38 cu.yds.
 12" V.P. 24 lin.ft.
 C.B. 1
 I.B. 1
 Sta. 20+0



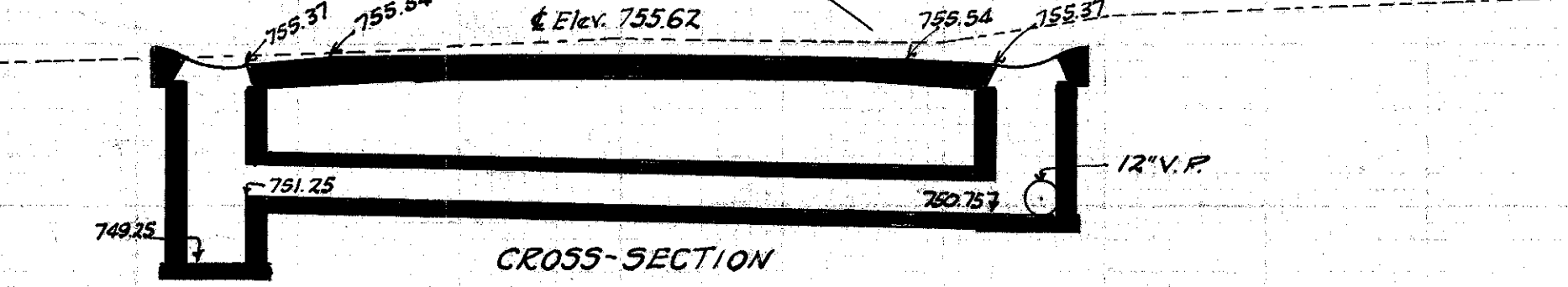
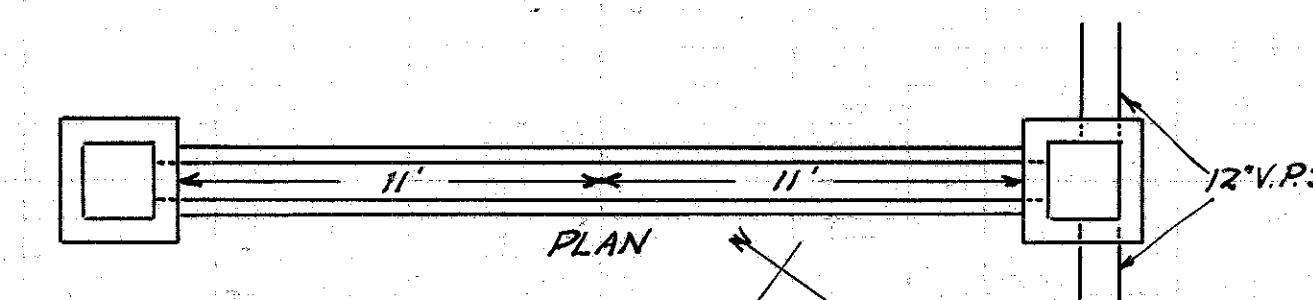
CULVERT DATA
 Type: Std. V.S.P. culvert Dr. #300
 Size: 12" x 24'
 Work Req.: Build 12" x 24' Std. V.P.(enc) culvert
 I.B. on R+L
 Drawn by Cumings + Plummer Checked by
 Date 3/31/28 Date Div'n. Engr.

EST. QUANTITIES
 Exc. 10.0 cu.yds.
 Con. 1-8 2.38 cu.yds.
 12" V.P. 24 lin.ft.
 I.B. 2
 Sta. 31+50



CULVERT DATA
 Type: Std. V.S.P. culvert Dr. #300
 Size: 12" x 24'
 Work Req.: Build 12" x 24' Std. V.P.(enc) culvert
 C.B. on L. I.B. on R.
 Drawn by Cumings + Plummer Checked by
 Date 3/31/28 Date Div'n. Engr.

EST. QUANTITIES
 Exc. 7.1 cu.yds.
 Con. 1-8 2.38 cu.yds.
 12" V.P. 24 lin.ft.
 C.B. 1
 I.B. 1
 Sta. 10+0



CULVERT DATA
 Type: Std. V.S.P. culvert Dr. #300
 Size: 12" x 24'
 Work Req.: Build 12" x 24' Std. V.P.(enc) culvert
 C.B. on L. I.B. on R.
 Drawn by Cumings + Plummer Checked by
 Date 3/31/28 Date Div'n. Engr.

EST. QUANTITIES
 Exc. 8.7 cu.yds.
 Con. 1-8 2.38 cu.yds.
 12" V.P. 24 lin.ft.
 C.B. 1
 I.B. 1
 Sta. 27+50