

Sec. Wickliffe + B.
LAKE COUNTY.

STA. 130+0 to 133+87.87

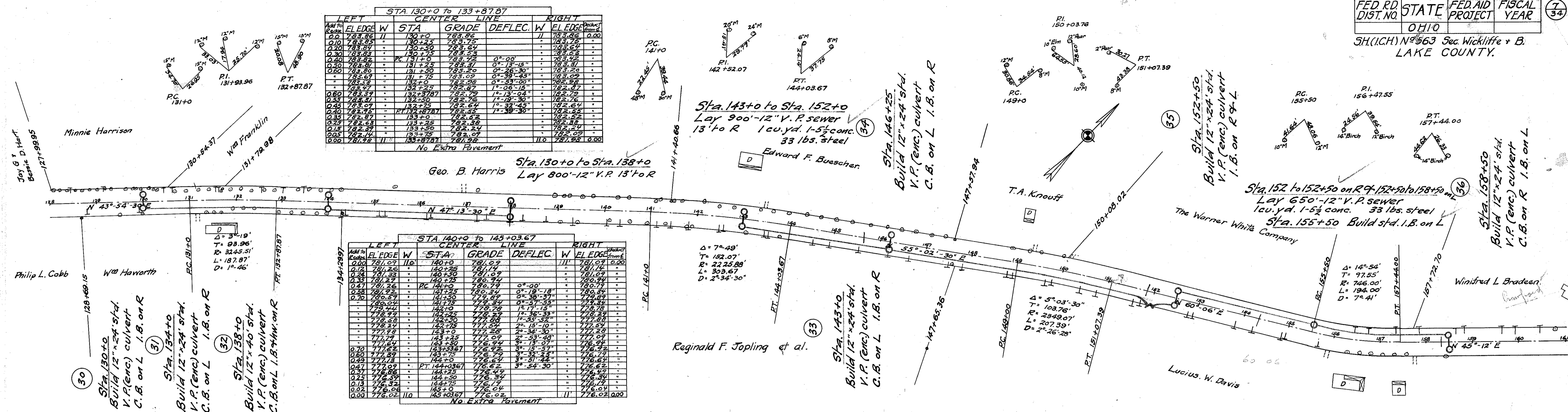
LEFT		CENTER LINE			RIGHT	
Station	Grade	Station	Grade	Deflection	Station	Grade
130+00	783.86	130+00	783.86		130+00	783.86
130+10	783.85	130+10	783.85		130+10	783.85
130+20	783.84	130+20	783.84		130+20	783.84
130+30	783.83	130+30	783.83	0°-00'	130+30	783.83
130+40	783.82	130+40	783.82	0°-26'-30"	130+40	783.82
130+50	783.81	130+50	783.81	0°-51'-15"	130+50	783.81
130+60	783.80	130+60	783.80	1°-16'-15"	130+60	783.80
130+70	783.79	130+70	783.79	1°-51'-15"	130+70	783.79
130+80	783.78	130+80	783.78	2°-26'-30"	130+80	783.78
130+90	783.77	130+90	783.77	3°-01'-15"	130+90	783.77
130+97.87	783.75	130+97.87	783.75		130+97.87	783.75

No Extra Pavement

STA. 140+0 to 145+03.67

LEFT		CENTER LINE			RIGHT	
Station	Grade	Station	Grade	Deflection	Station	Grade
140+00	781.09	140+00	781.09		140+00	781.09
140+10	781.08	140+10	781.08		140+10	781.08
140+20	781.07	140+20	781.07		140+20	781.07
140+30	781.06	140+30	781.06	0°-00'	140+30	781.06
140+40	781.05	140+40	781.05	0°-26'-30"	140+40	781.05
140+50	781.04	140+50	781.04	0°-51'-15"	140+50	781.04
140+60	781.03	140+60	781.03	1°-16'-15"	140+60	781.03
140+70	781.02	140+70	781.02	1°-51'-15"	140+70	781.02
140+80	781.01	140+80	781.01	2°-26'-30"	140+80	781.01
140+90	780.99	140+90	780.99	3°-01'-15"	140+90	780.99
140+93.67	780.97	140+93.67	780.97		140+93.67	780.97

No Extra Pavement



Sta. 143+0 to Sta. 152+0
Lay 900'-12" V.P. sewer
13' to R 1 cu. yd. 1-5/8 conc.
33 lbs. steel

Sta. 143+0
Build 12"x24" sthd. V.P. (enc.) culvert
C.B. on L I.B. on R

Sta. 152 to 152+50 on R of 152+50 to 158+50
Lay 650'-12" V.P. sewer
1 cu. yd. 1-5/8 conc. 33 lbs. steel
Sta. 155+50 Build sthd. I.B. on L

Sta. 158+50
Build 12"x24" sthd. V.P. (enc.) culvert
I.B. on R I.B. on L

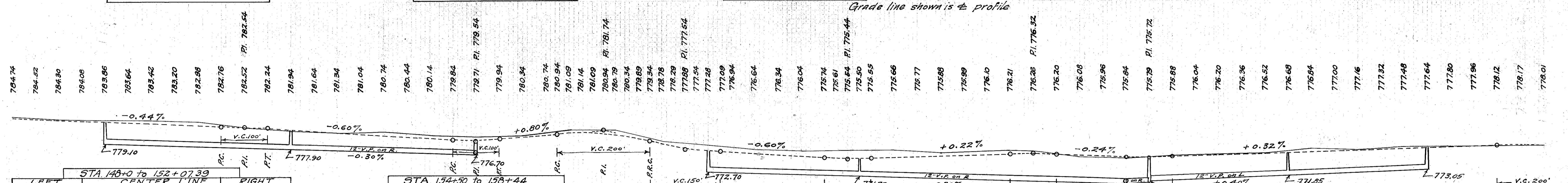
B.M. # 29 Sta. 129+99
Spike in side 15' Poplar
23' to L. of C.
Elev. 784.90

B.M. # 30 Sta. 134+29
Spike in backside 12" M.
23' to L. of C.
Elev. 782.23

B.M. # 31 Sta. 141+11
Spike in root 24" M.
20' to L. of C.
Elev. 781.84

B.M. # 32 Sta. 147+05
Spike in backside 12" M.
25' to L. of C.
Elev. 777.21

B.M. # 33 Sta. 155+75
Spike in side 14" M.
40' to R. of C.
Elev. 778.57



STA. 148+0 to 152+07.39

LEFT		CENTER LINE			RIGHT	
Station	Grade	Station	Grade	Deflection	Station	Grade
148+00	775.88	148+00	775.88		148+00	775.88
148+10	775.87	148+10	775.87		148+10	775.87
148+20	775.86	148+20	775.86		148+20	775.86
148+30	775.85	148+30	775.85	0°-00'	148+30	775.85
148+40	775.84	148+40	775.84	0°-26'-30"	148+40	775.84
148+50	775.83	148+50	775.83	0°-51'-15"	148+50	775.83
148+60	775.82	148+60	775.82	1°-16'-15"	148+60	775.82
148+70	775.81	148+70	775.81	1°-51'-15"	148+70	775.81
148+80	775.80	148+80	775.80	2°-26'-30"	148+80	775.80
148+90	775.79	148+90	775.79	3°-01'-15"	148+90	775.79
148+97.39	775.77	148+97.39	775.77		148+97.39	775.77

No Extra Pavement

STA. 154+50 to 158+44

LEFT		CENTER LINE			RIGHT	
Station	Grade	Station	Grade	Deflection	Station	Grade
154+50	776.36	154+50	776.36		154+50	776.36
154+60	776.35	154+60	776.35		154+60	776.35
154+70	776.34	154+70	776.34		154+70	776.34
154+80	776.33	154+80	776.33	0°-00'	154+80	776.33
154+90	776.32	154+90	776.32	0°-26'-30"	154+90	776.32
154+97.39	776.30	154+97.39	776.30		154+97.39	776.30

60.4 sq. yds. extra pavement

